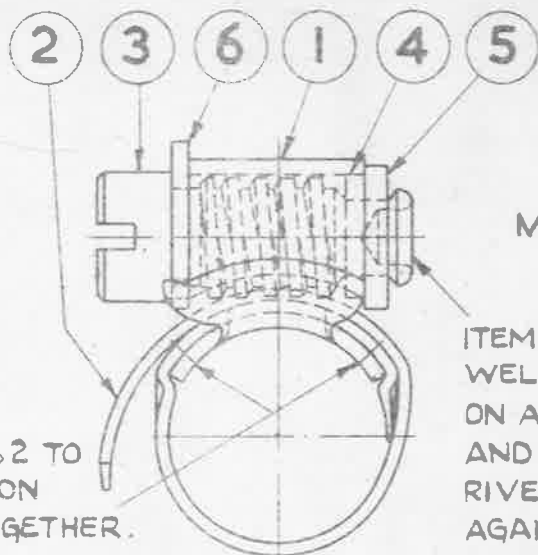


BASED ON DRAWINGS SUPPLIED BY
MESSRS HERBERT TERRY & SONS LTD.
REDDITCH, WORCESTERSHIRE.

A.G.S. 1000. SHEET 1.

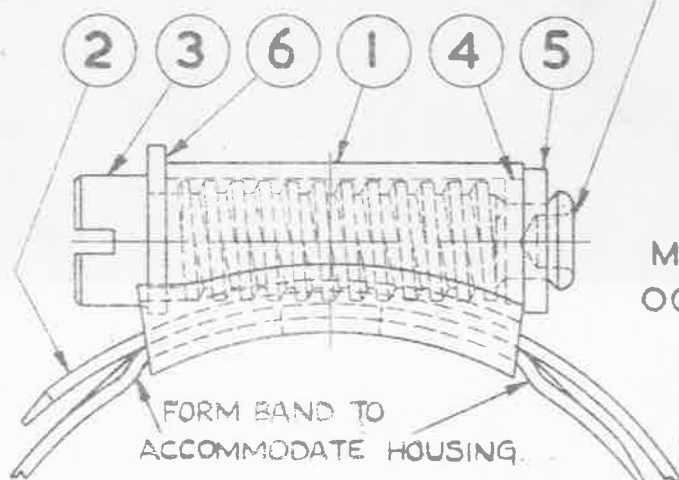
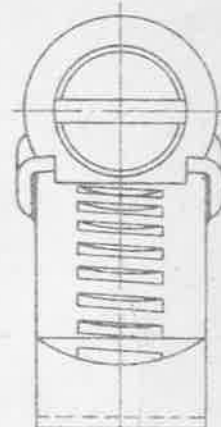
THIS HOSE-CLIP MUST
COMPLY WITH THE
REQUIREMENTS OF
SPEC: D.T.D. (R.D.I.) 3604
(LATEST ISSUE)



MARK OOA.

ITEMS NO 1 & 2 TO
BE PROJECTION
WELDED TOGETHER.

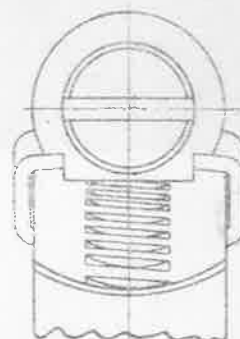
ITEM 3 TO BE
WELL GREASED
ON ASSEMBLY
AND END TO BE
RIVETED OVER
AGAINST STOPS.



MARKS
OO TO 6.

FORM BAND TO
ACCOMMODATE HOUSING.

SCALE: - 2/1.



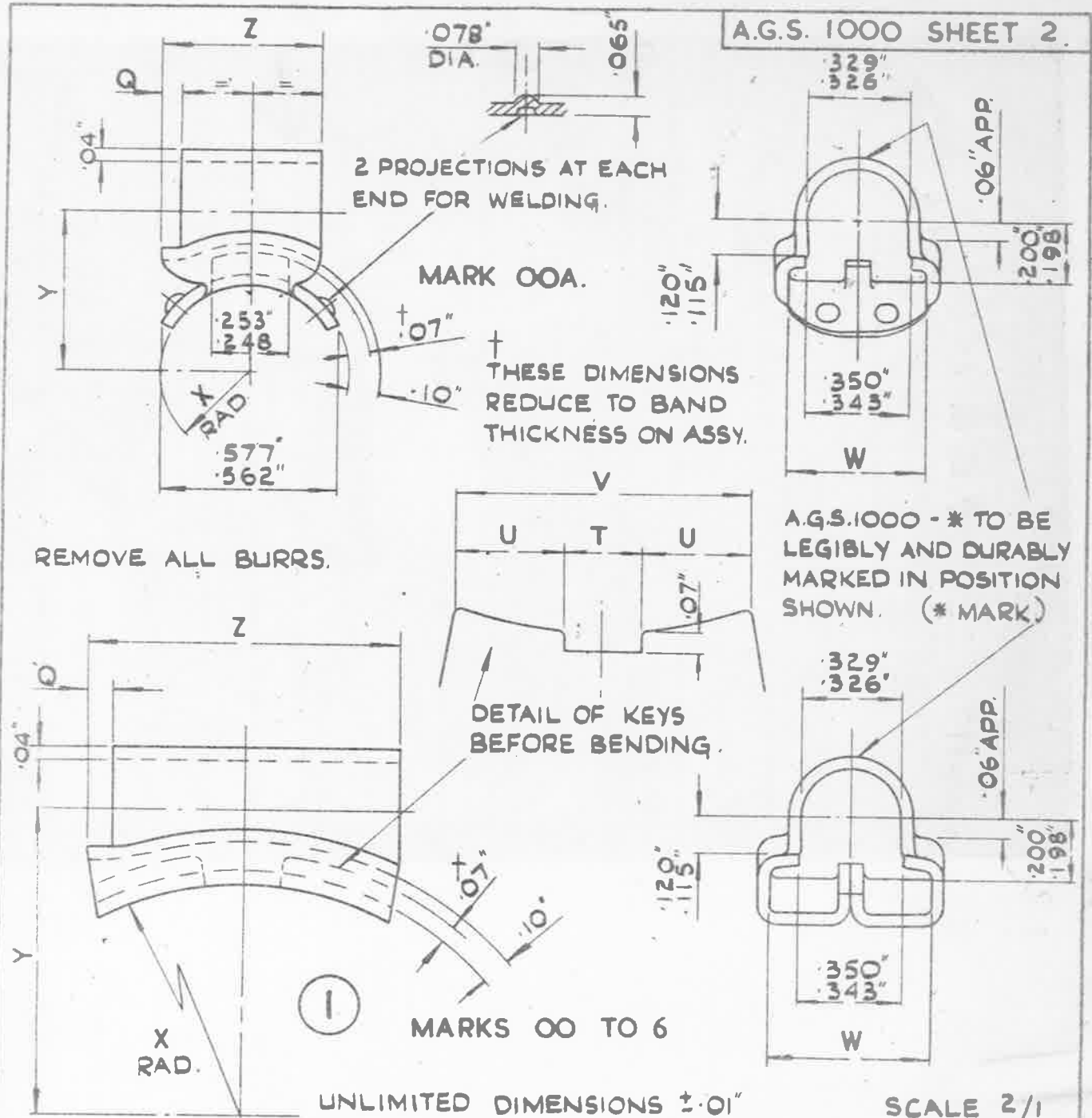
* MARKS OO & OOA ARE COMPLETELY INTERCHANGEABLE AND ARE EQUALLY ACCEPTABLE. THEY MAY BE STOCKED UNDER A SINGLE REFERENCE NUMBER.

ONE COMPLETE CLIP CONSISTS OF THE FOLLOWING ITEMS.

ITEM	A.G.S. NO	DESCRIPTION.	NO OFF	REMARKS.
1	1000 - 1	HOUSING.	1	SEE SHEET NO 2.
2	1000 - 2	BAND.	1	SEE SHEET NOS 3 & 4.
3	1000 - 3	SCREW.	1	SEE SHEET NOS 5 & 6.
4	1000 - 4	BEARING WASHER.	1	SEE SHEET NO 7.
5	1000 - 5	END WASHER.	1	SEE SHEET NO 7.
6	1000 - 6	THRUST WASHER.	1	SEE SHEET NO 6.

MARK.	SUITABLE FOR HOSE O/D.	MARK.	SUITABLE FOR HOSE O/D.
OO & OOA *	UP TO AND INCL. 1 1/8"	2	OVER 1 1/2" UP TO AND INCL. 2"
O	OVER 1 1/8" UP TO AND INCL. 1 1/4"	3	OVER 2" UP TO AND INCL. 2 1/4"
IA	OVER 1 1/4" UP TO AND INCL. 1 1/2"	4	OVER 2 3/4" UP TO AND INCL. 3 1/2"
I	OVER 1 1/2" UP TO AND INCL. 1 3/4"	5	OVER 3 1/2" UP TO AND INCL. 4 1/8"
IX	OVER 1" UP TO AND INCL. 1 5/8"	6	OVER 4 1/8" UP TO AND INCL. 5"

TITLE :- CLIP-HOSE, TYPE 'S' GENERAL ARRANGEMENT.	ISSUE No 2				
	ALT. NO MOD AS 967				
MINISTRY OF SUPPLY APPLICATIONS FOR A.G.S. SHEETS TO:- A.T.P.4, BLOCK 'E', CHESSINGTON, SURREY. GENERAL ENQUIRIES TO:- A.D./S.A.E. ST. GILES COURT, 1-13 ST. GILES HIGH STREET, LONDON W.C.2	R.A.E. APPROVAL		NUMBER OF SHEETS 7.	A.G.S. NO. 1000. SHEET 1.	
	SIGNATURE <i>A.D.S.A.E.</i>	DATE 7.5.54			
		A.D.S.A.E. APPROVAL			
		SIGNATURE <i>A.D.S.A.E.</i>	DATE 25/6/54		



A.G.S.1000 - * TO BE LEGIBLY AND DURABLY MARKED IN POSITION SHOWN. (* MARK)

UNLIMITED DIMENSIONS ±.01"

SCALE 2/1

MARK No.	Z	Y	X	W	V	U	T	Q
	+ .015" - 0	REFERENCE ONLY	± .030"	+ .010" - 0	+ .005" - .010"	+ 0 - .005"	+ .005" - 0	± .005"
OOA	.515"	.520"	.281"	.452"	-	-	-	.065"
OO	.583"	.582"	.343"	.452"	.385"	.124"	.137"	.065"
O	.653"	.723"	.484"	.515"	.552"	.181"	.190"	.080"
1A, 1 & IX.	.718"	.910"	.671"	.515"	.591"	.203"	.185"	.080"
2	1.000"	1.239"	1.000"	.515"	.946"	.350"	.246"	.080"
3 & 4	1.000"	1.520"	1.281"	.515"	.946"	.350"	.246"	.080"
5 & 6	1.000"	1.739"	1.500"	.515"	.946"	.350"	.246"	.080"

MATERIAL :- STEEL TO B.S. SPEC: 1449/En2. (LATEST ISSUE)

FINISH :- TO BE CADMIUM PLATED TO D.T.D. 904 (LATEST ISSUE)

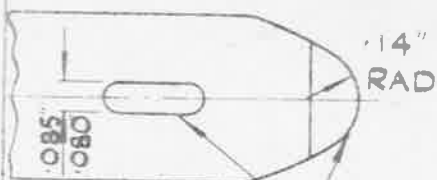
SM 792

TITLE HOUSING, CLIP-HOSE, TYPE 'S'	ISSUE	2					
	ALT. NO.	967					

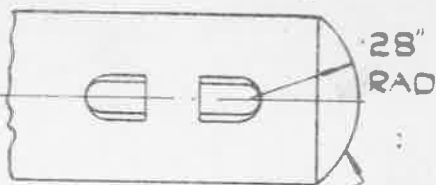
MINISTRY OF SUPPLY APPLICATIONS FOR A.G.S. SHEETS TO:- AT.P4, BLOCK 'E', CHESSINGTON, SURREY. GENERAL ENQUIRIES TO:- AD/SAE, ST GILES COURT, 1-13 ST. GILES HIGH STREET, LONDON W.C.2.	R.A.E. APPROVAL		NUMBER OF SHEETS	A.G.S. No. 1000 SHEET 2
	SIGNATURE	DATE		
	A.D.S.A.E. APPROVAL		7	
	SIGNATURE	DATE		

UNLIMITED DIMENSIONS ± 0.1 "
FLASH TO BE ON OUTSIDE OF BEND

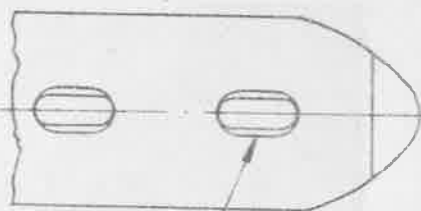
A.G.S. 1000 SHEET 3



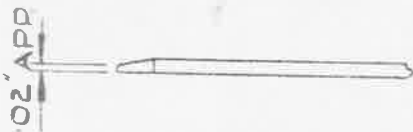
SHAPE OF END* AND
PIERCING ON MARK OOA.



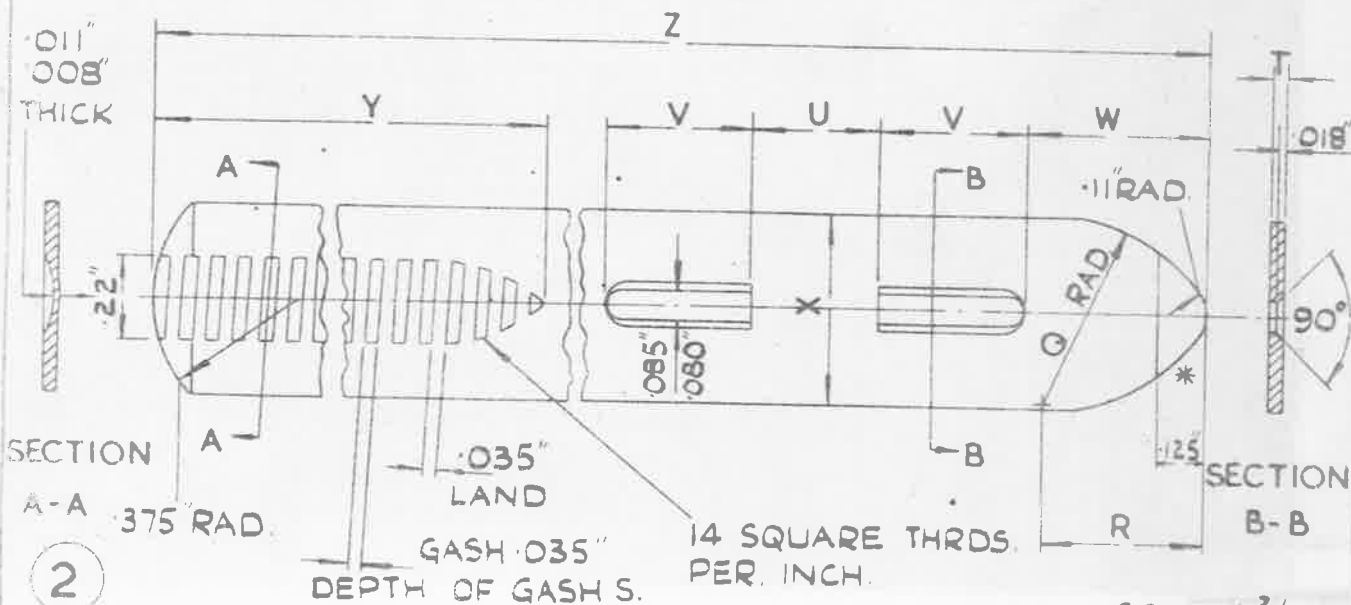
SHAPE OF END*
ON MARK OO.



SHAPE OF PIERCING
ON MARK O.



BOTH ENDS FLATTENED AS SHOWN.



MARK NO	Z	Y	X	W	V	U	T	S	R	Q
	+ .062" - 0	+ .125" - 0	+ .005"	+ .02" - 0	+ .005" - 0	+ 0 - .005"	+ .001" - .001"	+ .001"		
OOA	3.375"	1.625"	.438"	.390"	.265"	-	.030"	.024"	.50"	.80"
OO	3.375"	1.625"	.438"	.250"	.156"	.140"	.030"	.024"	.42"	.50"
O	4.250"	2.125"	.500"	.312"	.203"	.265"	.036"	.030"	.42"	.50"
1A	5.500"	2.625"	.500"	.406"	.234"	.218"	.036"	.030"	.42"	.50"
1	6.125"	3.125"	.500"	.406"	.234"	.218"	.036"	.030"	.42"	.50"
1X	6.438"	3.250"	.500"	.406"	.234"	.218"	.036"	.030"	.42"	.50"
2	8.375"	3.250"	.500"	.468"	.375"	.328"	.036"	.030"	.42"	.50"
3	10.500"	4.125"	.500"	.468"	.375"	.328"	.036"	.030"	.42"	.50"
4	13.000"	4.125"	.500"	.468"	.375"	.328"	.036"	.030"	.42"	.50"
5	15.000"	4.500"	.500"	.468"	.375"	.328"	.036"	.030"	.42"	.50"
6	17.690"	4.500"	.500"	.468"	.375"	.328"	.036"	.030"	.42"	.50"

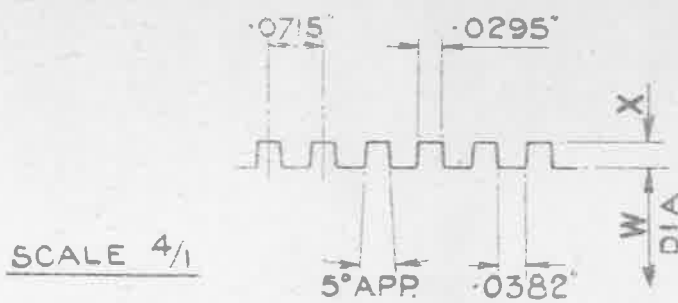
MATERIAL: STEEL TO B.S. SPEC. 1449/En 2C/1 (LATEST ISSUE)
FINISH: TO BE CADMIUM PLATED TO DTD 904 (LATEST ISSUE)
NOTE: FOR HARDNESS AND BEND TESTS SEE SHEET NO 4.

TITLE BAND, CLIP-HOSE, TYPE 'S'	ISSUE 2								
	ALT. NO. 430/455 967								

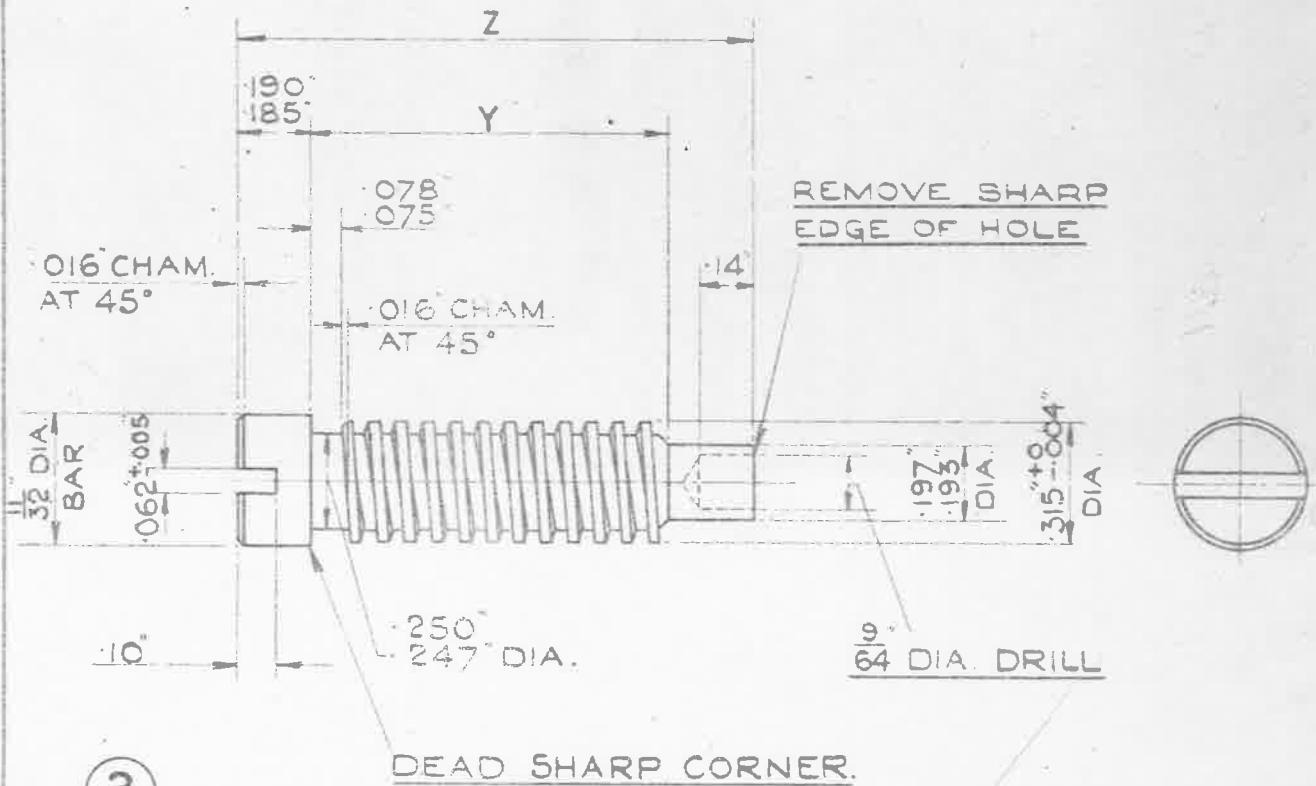
MINISTRY OF SUPPLY APPLICATIONS FOR A.G.S. SHEETS TO: AT. P. 4, BLOCK 'E', CHESSINGTON, SURREY. GENERAL ENQUIRIES TO: AD/SAE, ST. GILES COURT, 1-13 ST. GILES HIGH STREET, LONDON WC2	RAE APPROVAL		NUMBER OF SHEETS 7	A.G.S. NO. 1000 SHEET 3
	SIGNATURE	DATE		
	A.D.S.A.E. APPROVAL			
	SIGNATURE	DATE		

UNLIMITED DIMENSIONS $\pm .01$

A.G.S. 1000



14 THREADS PER INCH.
DETAIL OF THREAD.



3

SCALE 2/1

MARK	Z	Y	X	W
N ^o	$\pm .005$ "	$\pm .005$ "	-	$+ .004$ " $- 0$
00A	.862"	.447"	.0275"	.256"
00	.930"	.515"	.0275"	.256"
0	.970"	.555"	.0335"	.244"
1A, 1 & IX	1.050"	.630"	.0335"	.244"
2, 3, 4, 5, 6	1.332"	.922"	.0335"	.244"

MATERIAL:- STEEL TO B.S. SPEC. 970/EN1(b) (LATEST ISSUE)

FINISH :- TO BE CADMIUM PLATED TO DTD. 904 (LATEST ISSUE)

SMT30

TITLE:- SCREW
CLIP-HOSE, TYPE 'S'

ISSUE	X	2					
ALT. NO	MOD/AGS 771	MOD/AGS 967					

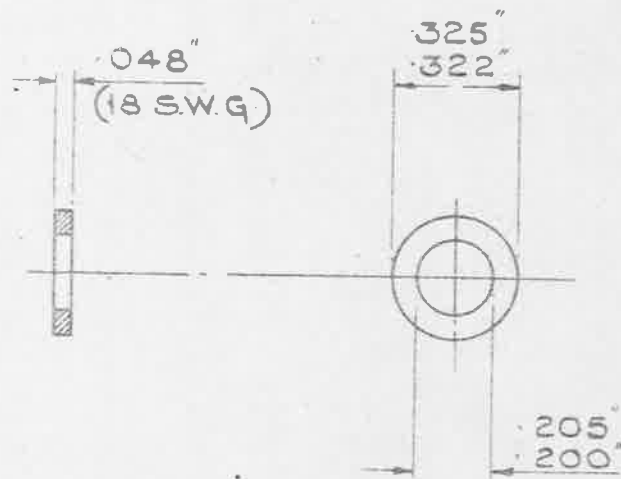
MINISTRY OF SUPPLY
APPLICATIONS FOR A.G.S. SHEETS TO:-
A.T.P. 4A. THAMES HOUSE, MILLBANK, S.W.1.

R.A.E. APPROVAL		AD. S.A.E. APPROVAL	
SIGNATURE	DATE	SIGNATURE	DATE
<i>A.S. R...</i>	13-6-49	<i>S. I. ...</i>	15/7/49

GENERAL INQUIRIES TO:-
A.D.S.A.E. THAMES HOUSE, MILLBANK, S.W.1.

SHEET N ^o	5	A.G.S. N ^o 1000
N ^o OF SHEETS	7	

UNLIMITED DIMENSIONS $\pm .01"$

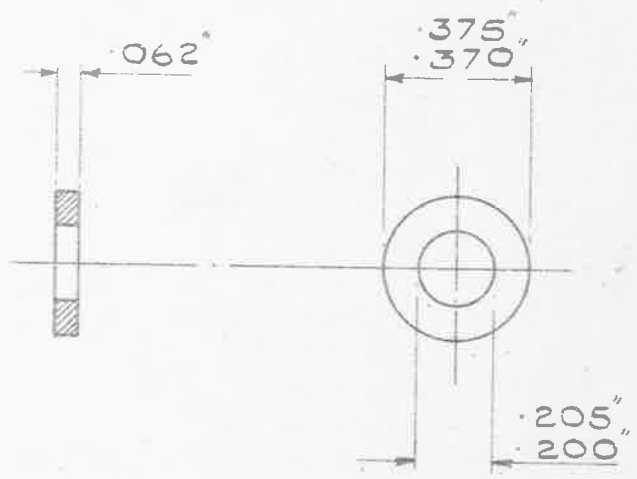


SCALE 2/1

4 BEARING WASHER

MATERIAL:- MILD STEEL HAVING A HARDNESS OF 166-187 BRINELL.

FINISH:- TO BE CADMIUM PLATED TO D.T.D. 904 (LATEST ISSUE)



SCALE 2/1

5 END WASHER

MATERIAL:- MILD STEEL HAVING A HARDNESS OF 179-223 BRINELL.

FINISH:- TO BE CADMIUM PLATED TO D.T.D. 904 (LATEST ISSUE)

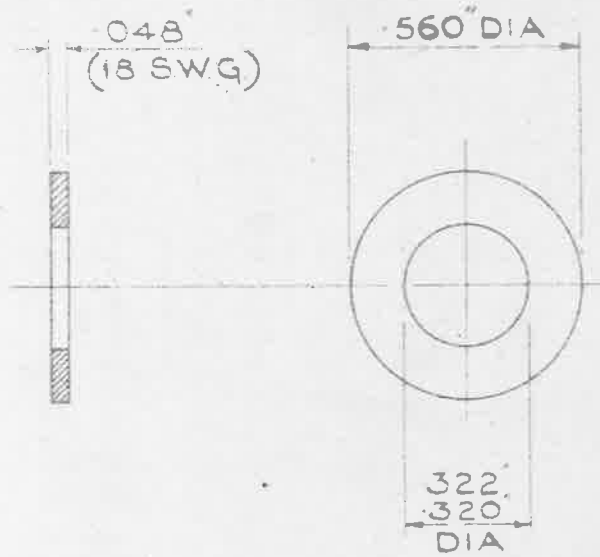
SM 790

TITLE:- WASHERS CLIP - HOSE, TYPE 'S'	ISSUE	+	2				
	ALT. NO	MOD/AGS 771	MOD/AGS 967				
MINISTRY OF SUPPLY APPLICATIONS FOR A.G.S. SHEETS TO:- ATP.4A. THAMES HOUSE, MILLBANK, S.W.1.	R.A.E. APPROVAL		AD. S.A.E. APPROVAL				
	SIGNATURE	DATE	SIGNATURE	DATE			
GENERAL INQUIRIES TO:- AD. S.A.E. THAMES HOUSE, MILLBANK, S.W.1.	SHEET NO	7	A.G.S. NO 1000				
	NO OF SHEETS	7					

WASHER FOR ALL MARKS.

A.G.S. 1000

UNLIMITED DIMENSIONS $\pm .01$ "

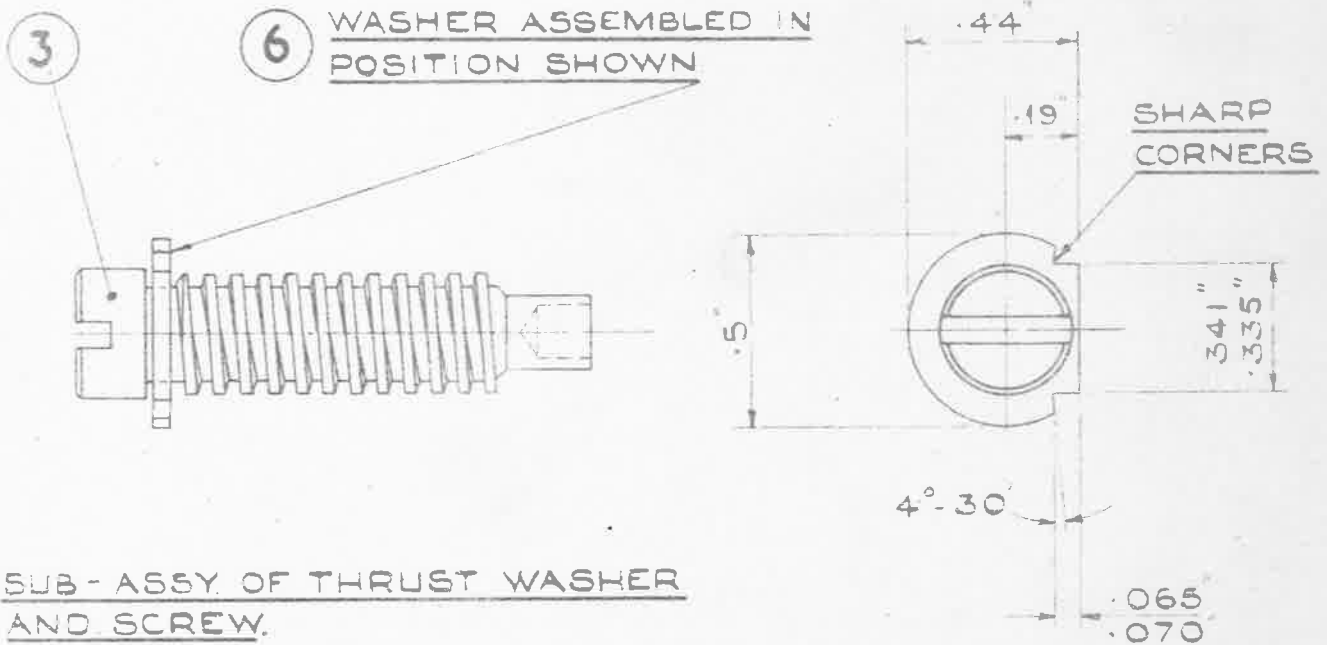


SCALE 2/1

6 THRUST WASHER

MATERIAL:- MILD STEEL HAVING A HARDNESS OF 153-179 BRINELL.

FINISH:- WASHER TO BE CADMIUM PLATED TO D.T.D 904 (LATEST ISSUE) AFTER CROPPING.



SUB-ASSY OF THRUST WASHER AND SCREW.

SCALE 2/1

SM790

TITLE:- THRUST WASHER, CLIP-HOSE, TYPE'S	ISSUE	4	2				
	ALTN ^o	MOD/AGS	771	MOD/AGS	967		
MINISTRY OF SUPPLY APPLICATIONS FOR A.G.S. SHEETS TO:- A.T.P.4A. THAMES HOUSE, MILLBANK, S.W.1. GENERAL INQUIRIES TO:- A.D.S.A.E. THAMES HOUSE, MILLBANK, S.W.1.	R.A.E. APPROVAL		A.D. S.A.E. APPROVAL				
	SIGNATURE	DATE	SIGNATURE	DATE			
	SHEET N ^o	6	A.G.S. N^o 1000				
	N ^o OF SHEETS	7					