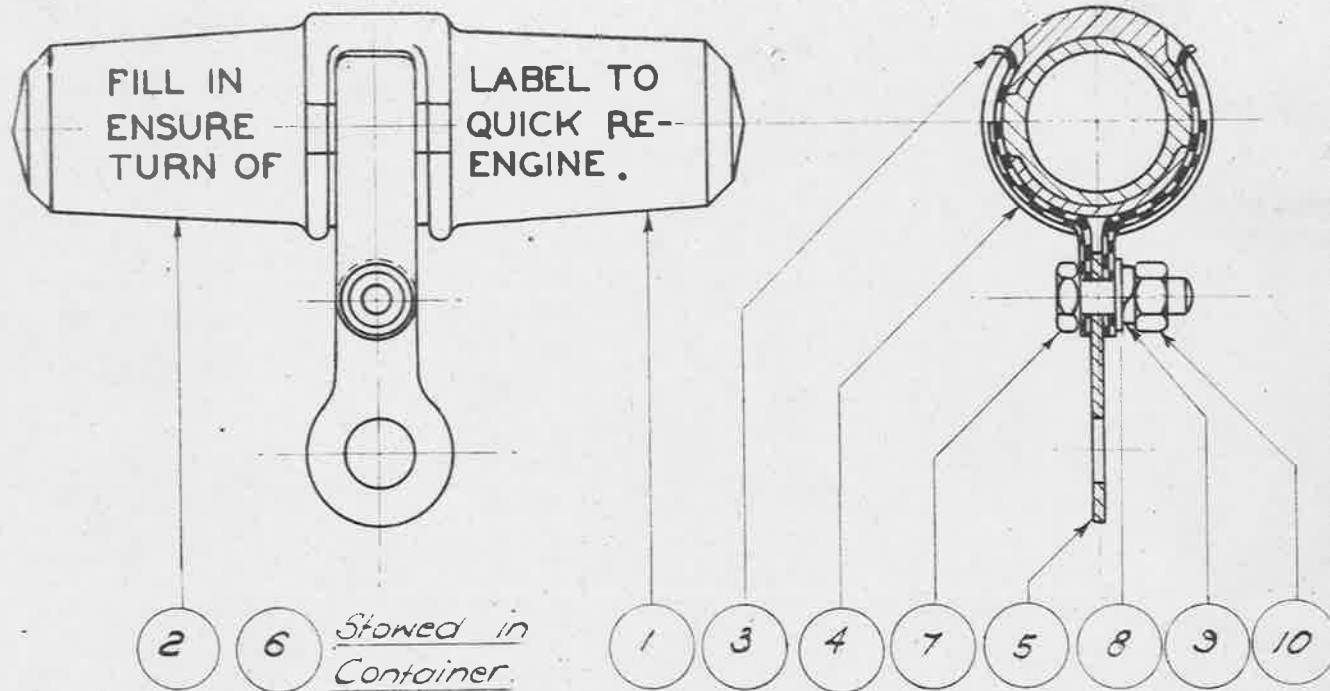


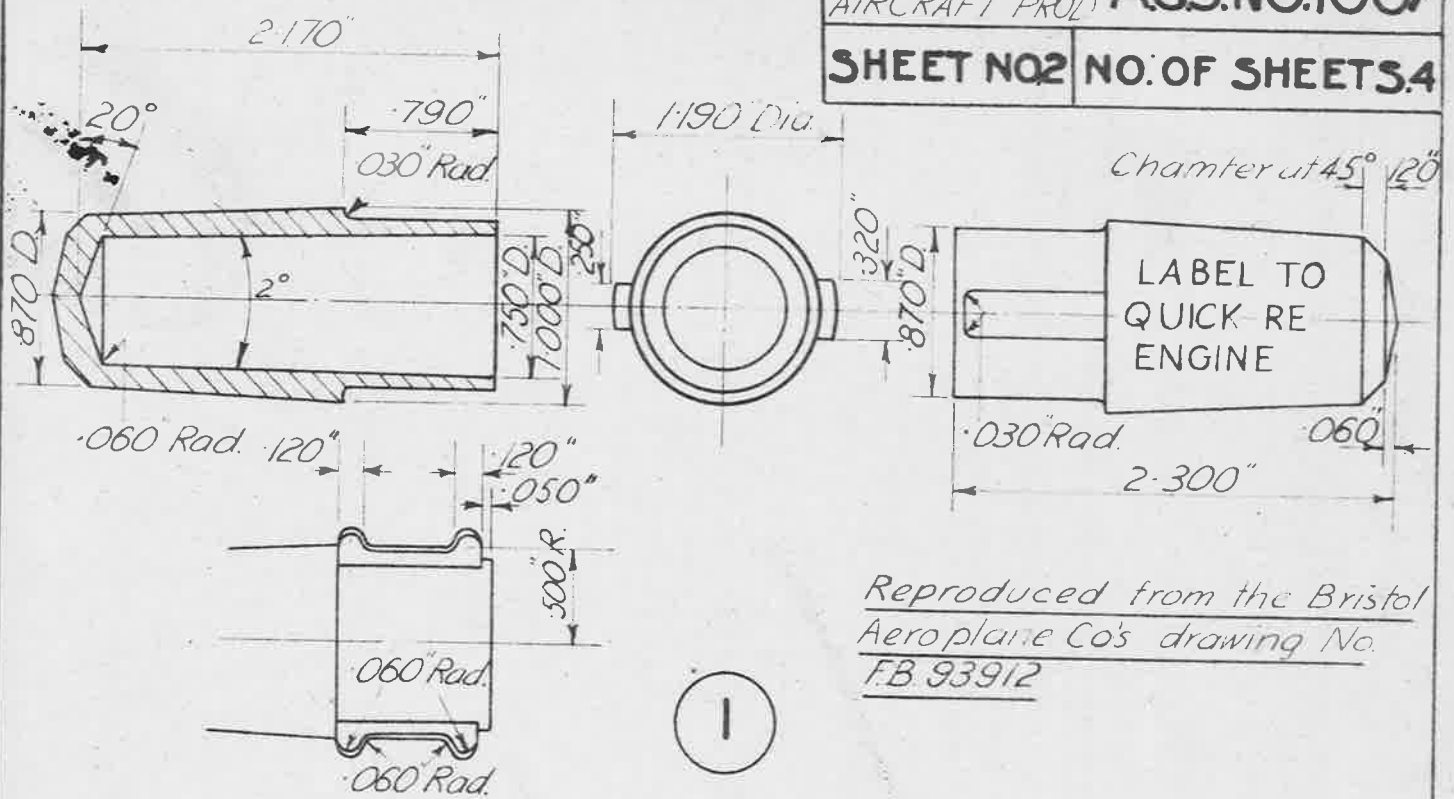
Reproduced from the Bristol Aeroplane Co's Drawg N° F.B. 03536.



PARTS REQUIRED FOR ONE COMPLETE LABEL ATTACHMENT.

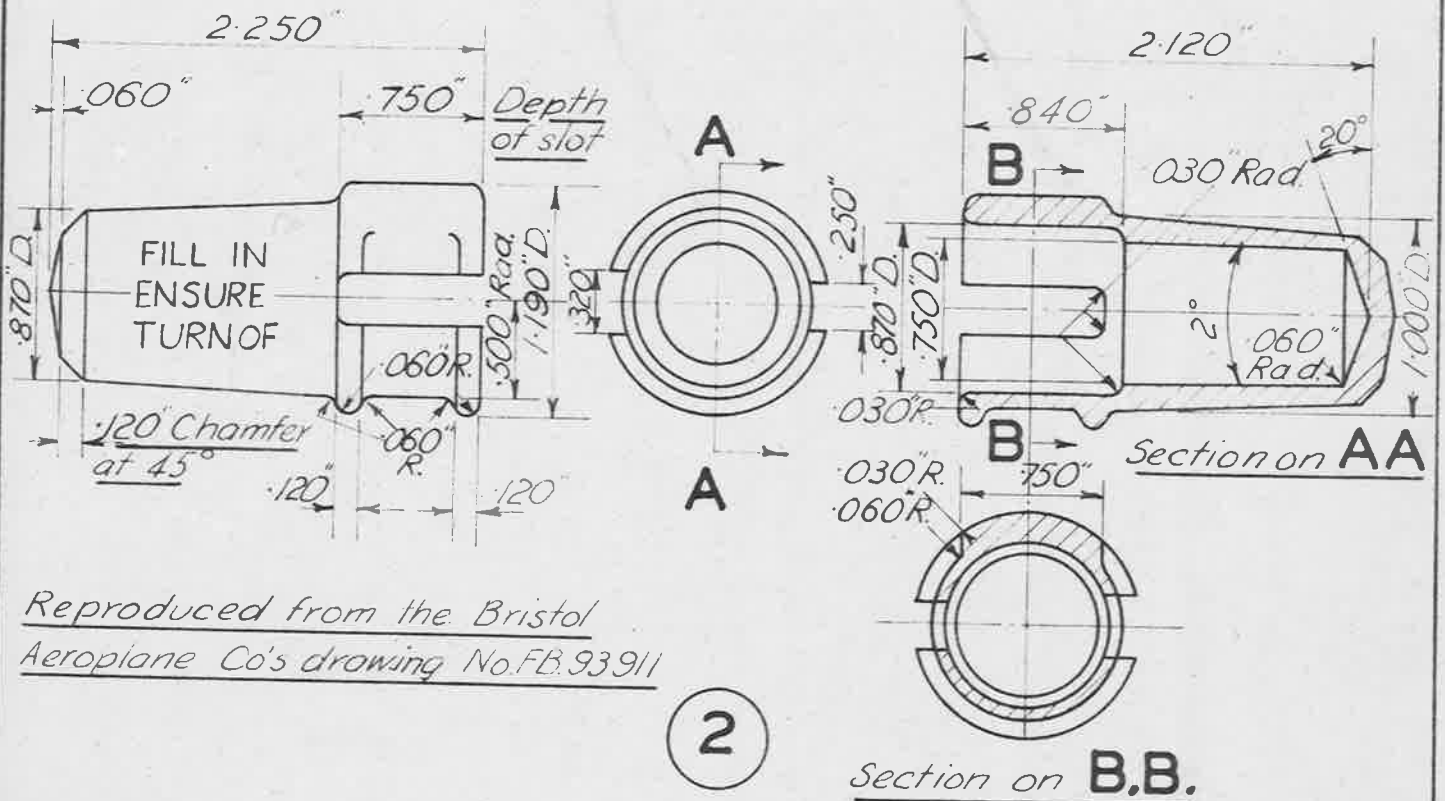
ITEM	PART N°	DESCRIPTION	QUANTY	MAT ⁺	SPEC. N° (LATEST ISSUE)	REMARKS.
1	A.G.S. 1007-1.	Label Container. Plug half.	1.	Plastic Moulding		
2	A.G.S. 1007-2	Label Container. Socket half.	1.	Plastic Moulding.		
3	A.G.S. 1007-3	Clip. (Inner)	1 Pair.	Spring Steel.	D.T.D 187	
4	A.G.S. 1007-4	Clip. (Outer)	1 Pair.	Spring Steel.	D.T.D 187.	
5	A.G.S. 1007-5	Support.	1.	Steel.	B.S. S.84.	
6	A.G.S. 1007-6	Overhaul Label.	1.	Linen.		
7	C-5	Bolt.	1.		B.S. A1-51.	
8	N.D.	Washer.	1.	Steel.	D.T.D 124	357" O.D. 195" I.D. *26 S.W.G (0.018")
9	A.G.S. 162/C.	Spring Washer.	1.			Cadmium Plated.
10	Y.C.P.	Nut.	1.		B.S. A-16.	

ISSUED BY DRAWING OFFICE DIRECTORATE of TECHNICAL DEVELOPMENT MINISTRY of AIRCRAFT PRODUCTION	TITLE:- Label Attachment. Engine Data.				DRAWN.	TRACED J. Stan. 13. 7. 47.
	ISSUE N°	1.			CHECKED	APPROVED
	ALTER ⁿ N°	Mod. 420.			J. L. A.	



Reproduced from the Bristol Aeroplane Co's drawing No. FB 93912

LABEL CONTAINER - PLUG HALF
SEE SPECIFICATION GIVEN BELOW



Reproduced from the Bristol Aeroplane Co's drawing No.FB.93911

LABEL CONTAINER - SOCKET HALF
SPECIFICATION

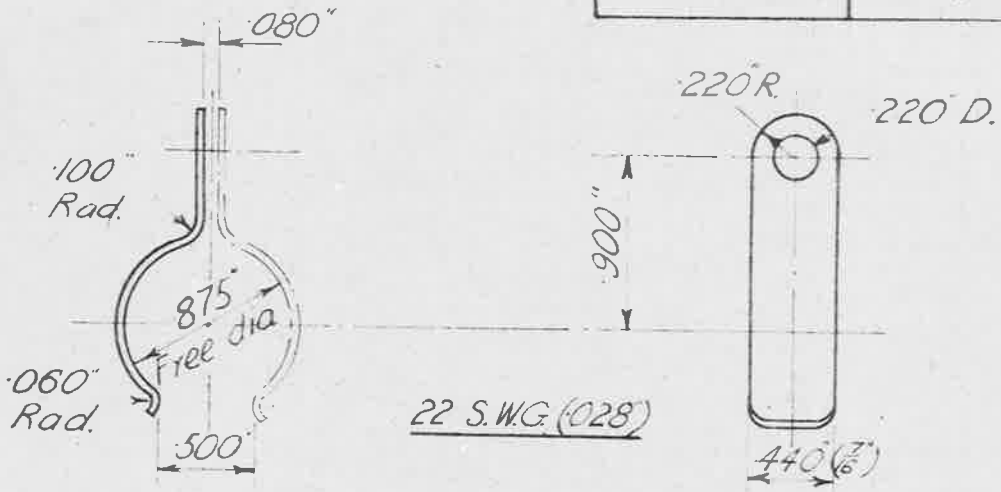
Material: Plastic moulding

The dimensions of plug and socket are nominal. The plug with its tongues must be a close sliding fit in the sockets and slots.

The lettering must be moulded in the positions shown relative to the .25 wide tongue and slot.

The letters are to be sunk with red filling

ISSUED BY DRAWING OFFICE DIRECTORATE OF TECHNICAL DEVELOPMENT MINISTRY OF AIRCRAFT PRODUCTION	TITLE:- LABEL ATTACHMENT ENGINE DATA				DRAWN	TRACED K.M.C.179.42
	ISSUE No.	1			CHECKED	APPROVED
	ALTER ^N No.	MOD. 420			J.L.A.	



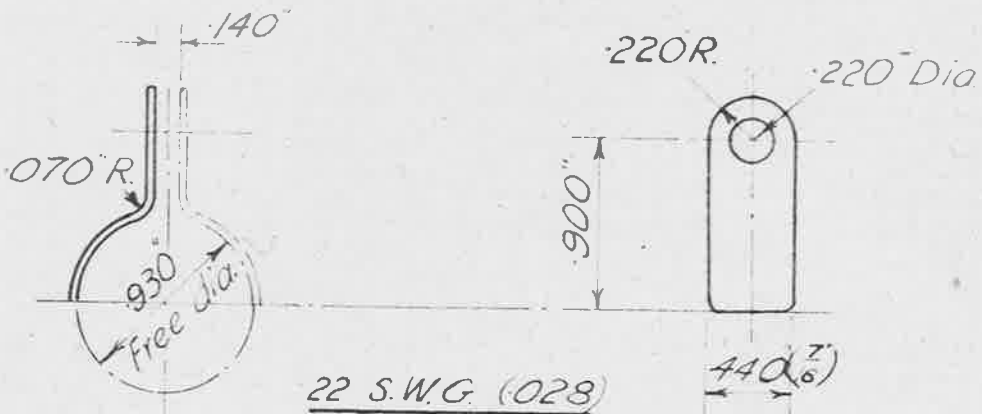
Finish:-
Cadmium plated

Reproduced from the Bristol Aeroplane Co's. drawing No. FB.93914

3

LABEL CONTAINER CLIP (INNER)

Material:- Spring steel to specification D.T.D. 187 (latest issue)



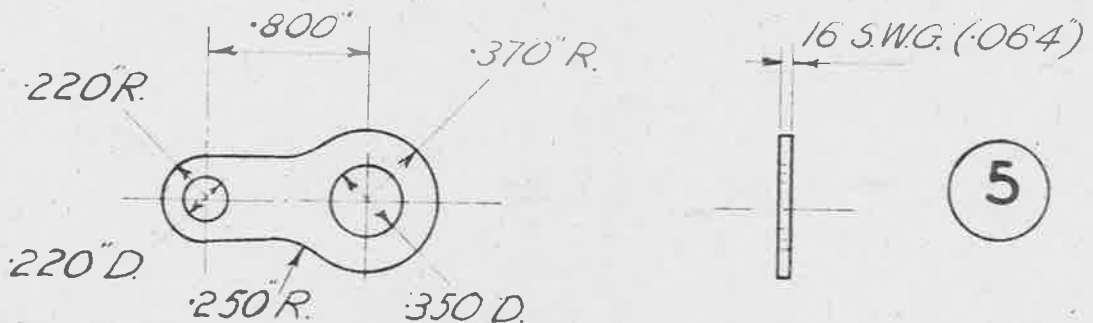
Finish:-
Cadmium plated

Reproduced from the Bristol Aeroplane Co's drawing No. FB 93913

4

LABEL CONTAINER CLIP (OUTER)

Material:- Spring steel to specification D.T.D. 187 (latest issue)



Finish:-
Cadmium plated

Reproduced from the Bristol Aeroplane Co's. drawing No. FB.93914

5

LABEL CONTAINER SUPPORT

Material:- Steel to B.S. specification S.84 (latest issue)

ISSUED BY DRAWING OFFICE DIRECTORATE OF TECHNICAL DEVELOPMENT MINISTRY OF AIRCRAFT PRODUCTION	TITLE:- LABEL ATTACHMENT - ENGINE DATA				DRAWN J.W.B.	TRACED K.M.C. 17.9.42
	ISSUE NO.	1			CHECKED	APPROVED
	ALTER ^N NO.	MOD. 4.20			J.L.A.	

FOLD HERE

TOP EDGE

<p>No. Squadron</p> <p>Hours Run since last complete overhaul hrs. mins.</p> <p>Reason for return of engine</p> <p>Assemblies which have been stripped for any reasons loosely reassembled</p> <p>Engine Type</p> <p>Engine N°</p>	<p>Treated in accordance with AP 1464/C32 (Engineering Manual)</p> <p>Signature Date</p> <p>Engine Checked as per Checking List</p> <p>Signature Date</p> <p>Engine despatched less items</p> <p>Signature Date</p> <p>Assemblies or parts which have been removed from the engine and replaced by unserviceable parts</p>
--	--

TOP EDGE

Further particulars to assist at overhaul

Signature Eng Officer

Roll from this end.

IF YOU WANT THIS ENGINE
RETURNED FOR SERVICE QUICKLY,
FILL IN OTHER SIDE OF LABEL,
REPLACE IN CONTAINER,
AND ATTACH TO ENGINE.

OUTSIDE FACE

6

Overhaul label to be printed in red on linen 10.5" X 2.75"

ISSUED BY DRAWING OFFICE
DIRECTORATE OF
TECHNICAL DEVELOPMENT
MINISTRY OF
AIRCRAFT PRODUCTION

TITLE: LABEL ATTACHMENT
ENGINE DATA

ISSUE N°	1	2
MOD.	420	AS 245
ALTER ^N N°		

DRAWN	RETRACED
CHECKED	APPROVED
J.L.A.	