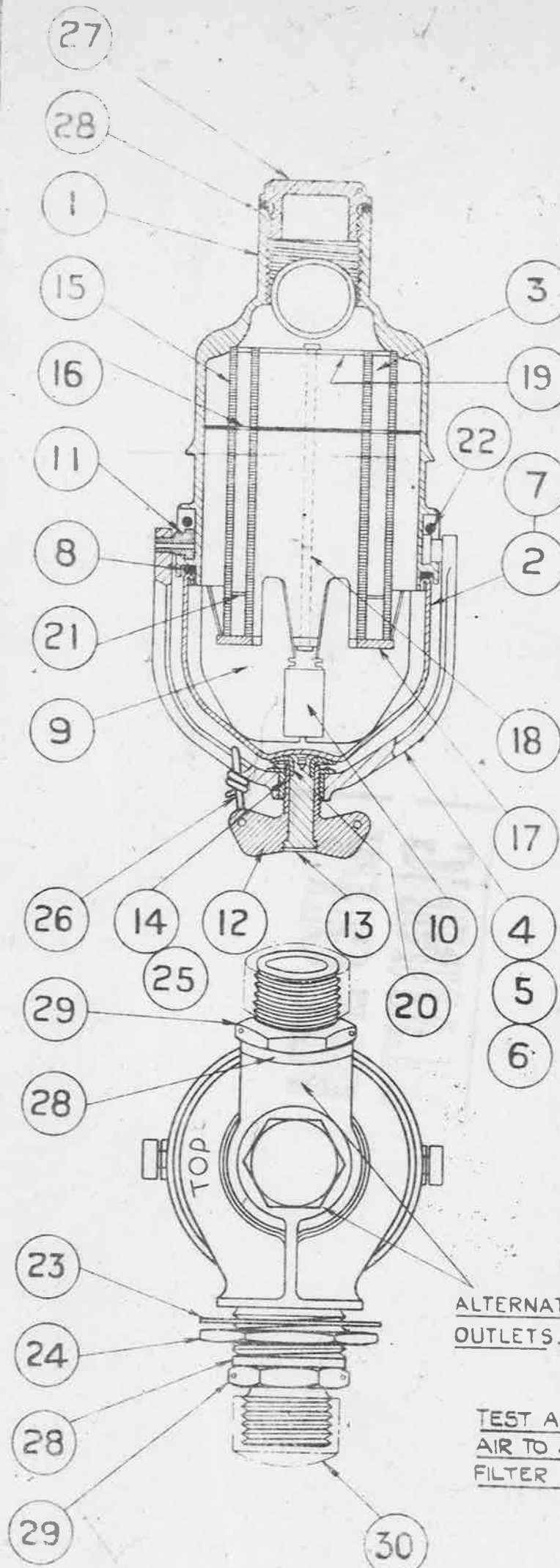


BASED ON S.P.C. DRAWINGS

MINISTRY OF
AIRCRAFT
PRODUCTION

AGS.No.100

SHEET No 1 No OF SHEETS



PT. NO	SHT. NO	DESCRIPTION	NO. OFF	REMARKS
		A.G.S. 1009		
1	2	FILTER HEAD	1	
2	3	FILTER SUMP ASSLY	1	
3	4	FILTER PACK ASSLY	1	
4	5	STIRRUP SUB. ASSLY	1	
5	6	SCREW & STIRRUP ASSLY	1	
6	7	STIRRUP FILTER SUMP	1	
7	8	FILTER SUMP	1	
8	9	JOINT RING FILTER SUMP	1	
9	10	FIN	3	
10	11	FIN CENTRE	1	
11	12	HINGE PIN STIRRUP	2	
12	13	CLAMPING SCREW	1	
13	14	CENTRE PIN	1	
14	15	SCREWED BUSH	1	
15	16	LAMINATION FILTER PACK	425 APPROX	
16	17	BAFFLE PLATE	1	
17	18	BOTTOM RING	1	
18	19	ROD	2	
19	20	TOP PLATE	1	
20	21	END CAP STIRRUP	1	
21	22	STABILISING RING	1	
22	-	SPLIT PIN	2	AGS 166/3
23	-	TAB WASHER	1	AGS 1002/16
24	-	LOCKING NUT	1	AGS 1002/19
25	-	BUSH SCREW (PARKER KALON)	4	U ³ / ₁₆ x 00
26	-	LOCKING WIRE 18 S.W.G.		COPPER LENGTH TO SUIT
27	-	BLANKING PLUG	1	AGS 948/M
28	-	UNION WASHER	3	AGS 567/H
29	-	UNION	2	AGS 907/H
30	-	PROJECTION CAP (PLASTIC)	2	AGS 504/H

ALTERNATIVE
OUTLETS.

TEST ASSEMBLED FILTER INTERNALLY WITH
AIR TO 30 LB/SQ. IN (GAUGE) PRESSURE WITH
FILTER IMMERSSED IN PETROL OR PARAFFIN.

SCALE :- HALF FULL SIZE.

ISSUED BY THE
ROYAL AIRCRAFT
ESTABLISHMENT.
MINISTRY OF
AIRCRAFT PRODUCTION.

TITLE:- 300 G.P.H. FUEL FILTER.

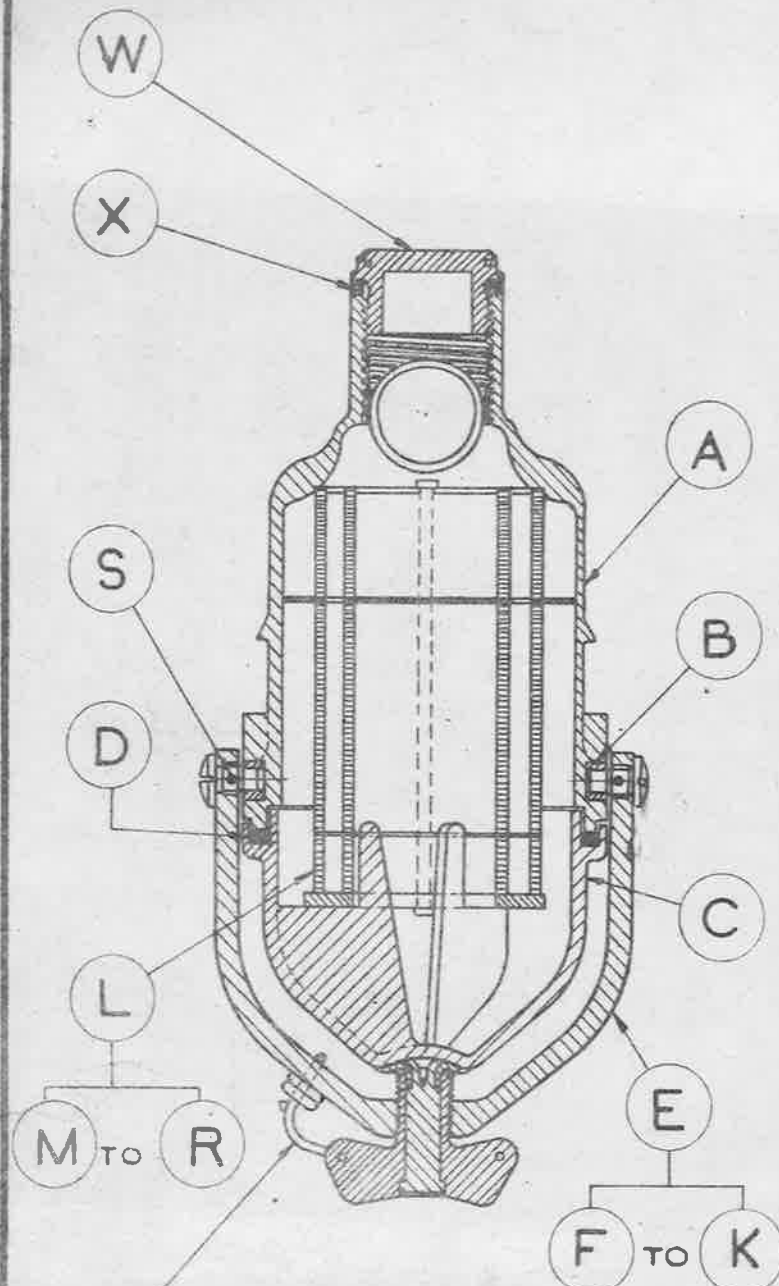
ISSUE NO 2
ALTERATION

DRAWN
M. J. Holroyd

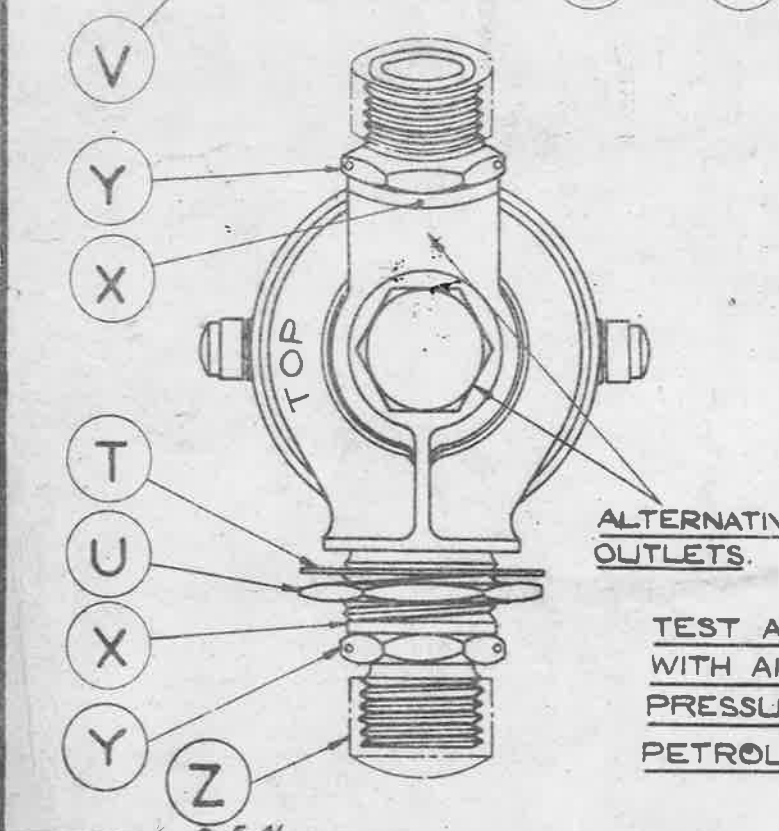
CHECKED
H. Green

TRACED
DW. 29-10-42

APPROVED



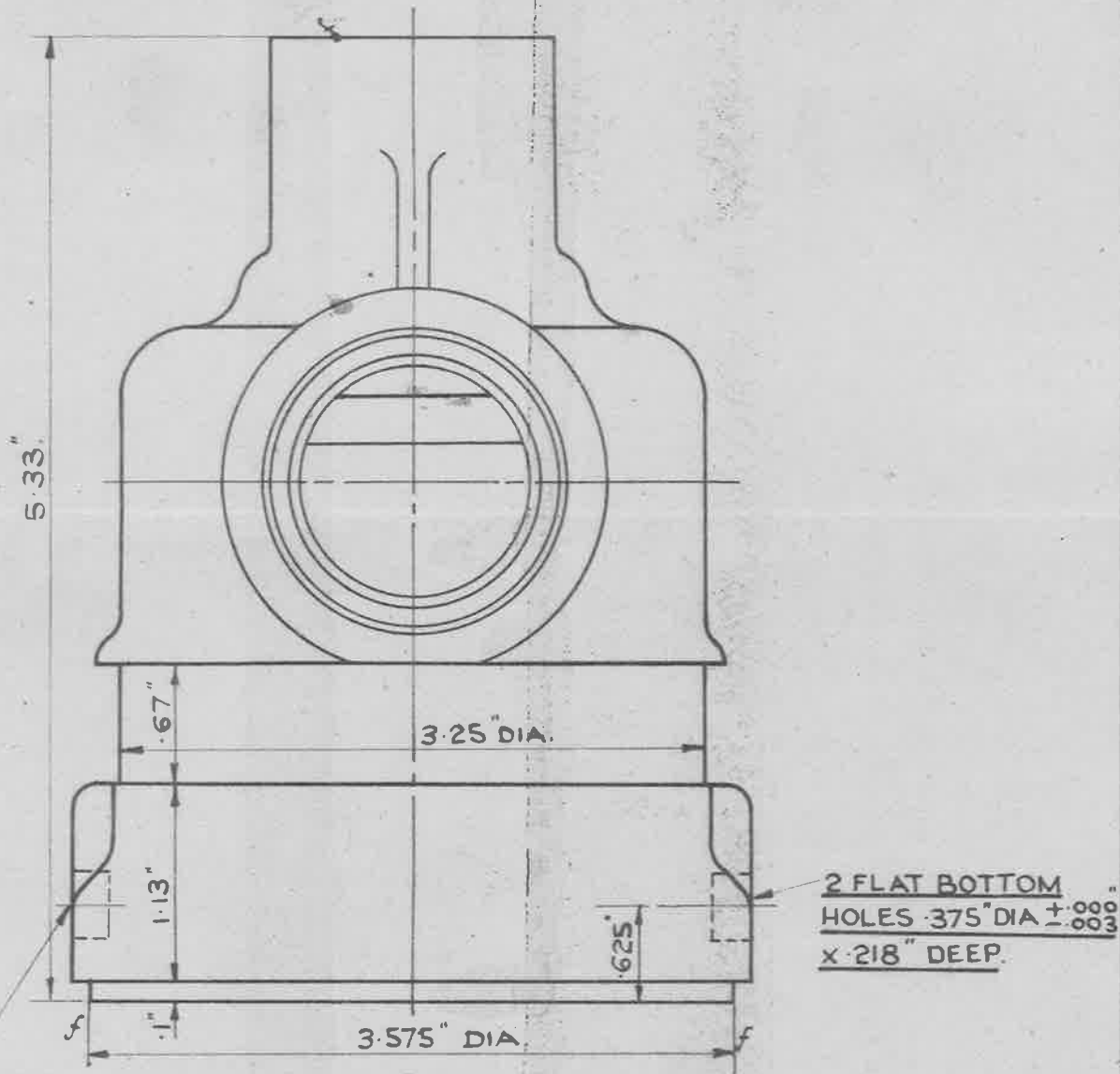
PT. N ^o	SHT. N ^o	DESCRIPTION	N ^o OFF	REMARKS
		A.G.S. 1008		
A	2/3	FILTER HEAD.	1	SEE SHTS. 4 & 5 FORCASTING DRGS.
B	6	BEARING-FILTER HEAD.	2	
C	7	FILTER SUMP.	1	
D	8	FILTER SUMP JOINT RING.	1	
E	9	STIRRUP ASSEMBLY.	1	DETAILS-F TO K.
L	15	FILTER PACK ASS'Y.	1	DETAILS-M TO R.
S	-	SPLIT PIN.	2	AGS 166/3.
T	22	TAB WASHER.	1	
U	22	THIN NUT.	1	
V	-	LOCKING WIRE 18 SW.G.		COPPER. LENGTH TO SUIT.
W	-	BLANKING PLUG.	1	AGS. 948/N.
X	-	UNION WASHER.	3	AGS 1138 H OR 1139 H.
Y	-	UNION.	2	AGS 1105 H.
Z	-	PROJECTION CAP (PLASTIC)	2	AGS. 504/H.



TEST ASSEMBLED FILTER INTERNALLY WITH AIR TO 30 LB/SQ. IN. (GAUGE) PRESSURE WITH FILTER IMMERSSED IN PETROL OR PARAFFIN.

SCALE:- 1/2 FULL SIZE.

ISSUE N ^o	4								
ALTER ^N N ^o	AS. N ^o AGS/418								
ISSUED BY THE ROYAL AIRCRAFT ESTABLISHMENT		TITLE:- 300 G.P.H. FUEL FILTER				DRAWN. D.H.		TRACED O.E.N.P. 29.3.45	
						CHECKED R. Manser		APPROVED. J.B. H. 4.45	



BEARING PT. 'B'
FITTED IN BOTH SIDES.

(A) FILTER HEAD. DOUBLE OUTLET.

NOTE:- MACHINE WHERE MARKED f.

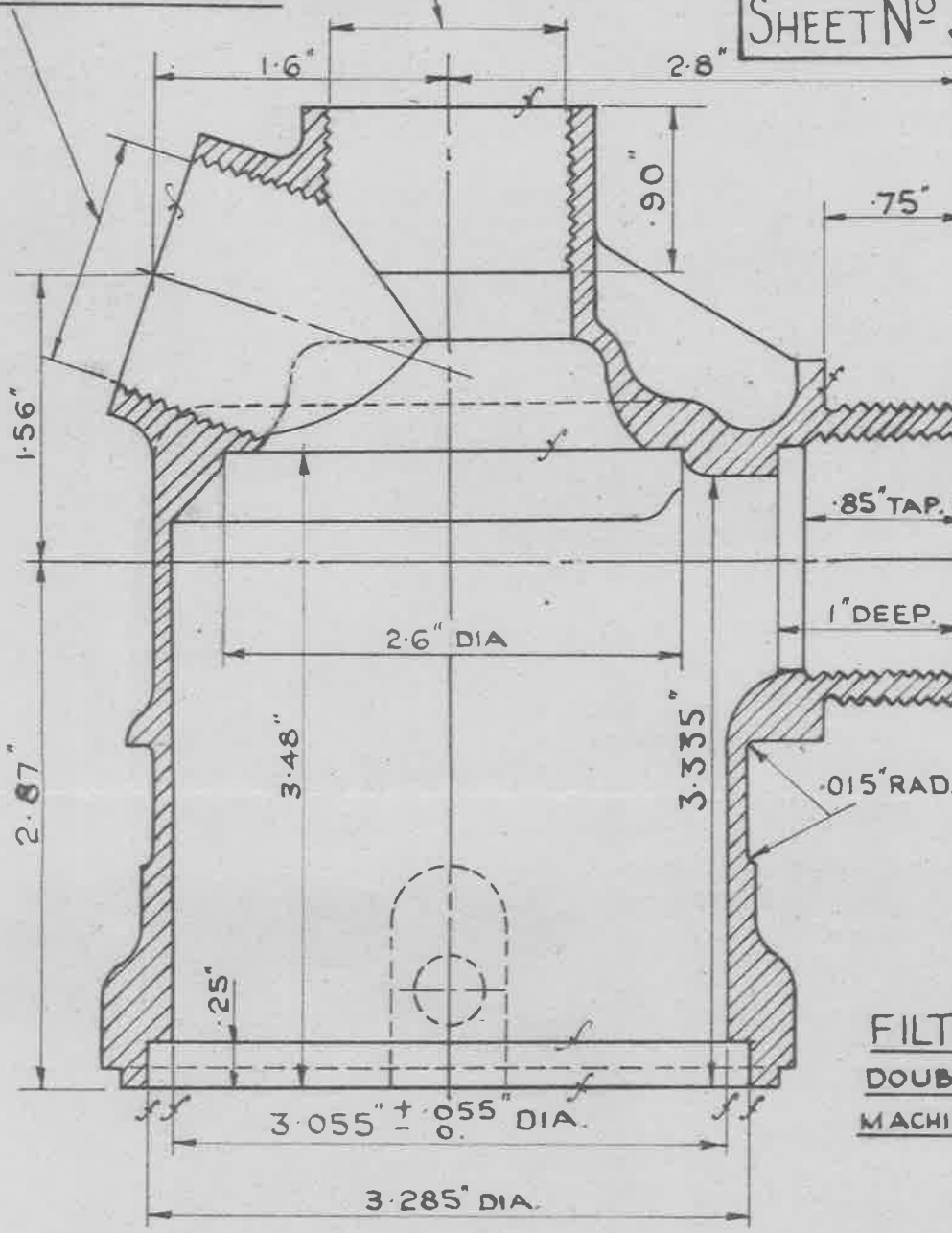
ALL DIMENSIONS UNLESS OTHERWISE STATED TO BE WITHIN ± .005."

ISSUED BY THE ROYAL AIRCRAFT	TITLE:- 300 G.P.H FUEL FILTER.			DRAWN D.H.	TRACED DIV. OF AIRCR. PR F. LIVINGSTON 31-5-48
	ISSUE N°	1	2	CHECKED	APPROVED

1.198" BORING DIA. BEFORE TAPPING. TAPPED 1" BSP.

MINISTRY OF AIRCRAFT PRODUCTION A.G.S. N°1008.

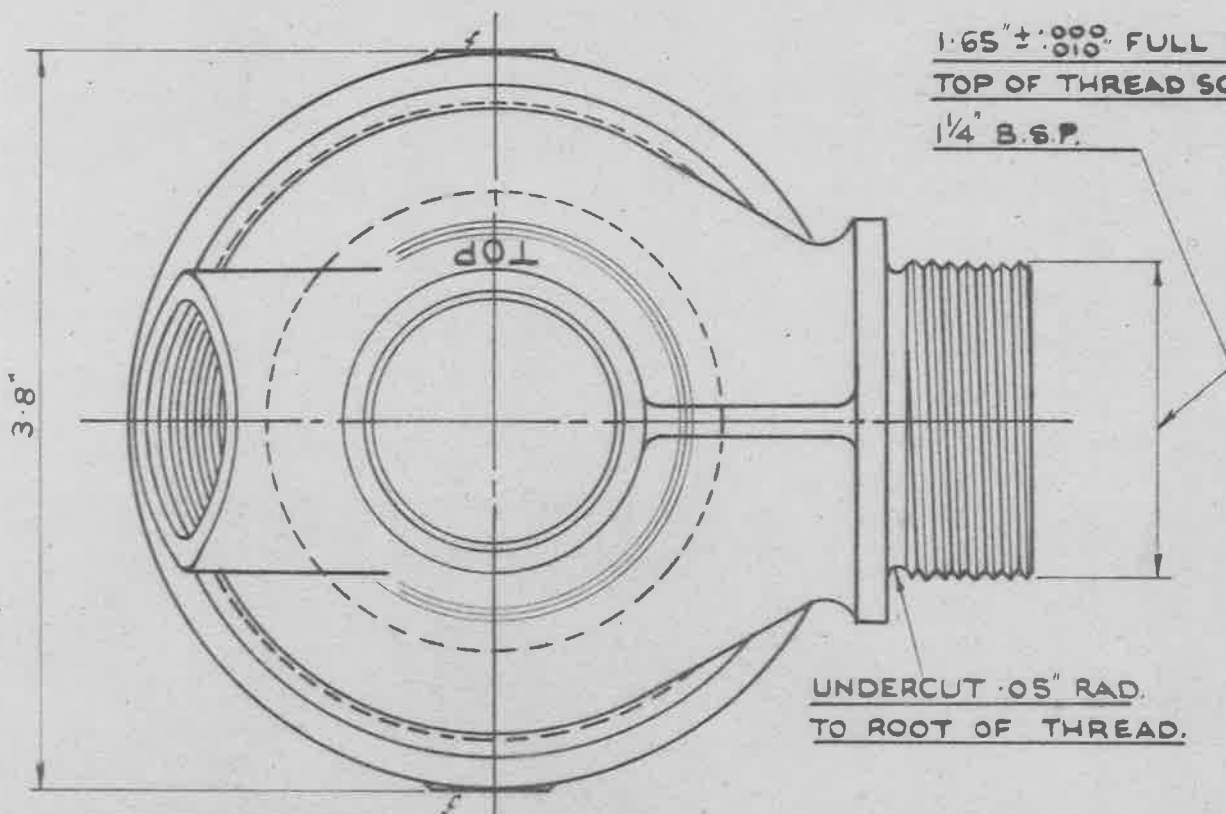
SHEET N° 3 N° OF SHEETS



NOTE:-
SCREW THREADS TO BE TO B.S. SPEC. N° 84: 1940 (LATEST ISSUE) MEDIUM FIT.

1.198" BORING DIA. BEFORE TAPPING. TAPPED 1" B.S.P.

FILTER HEAD (A)
DOUBLE OUTLET
MACHINE WHERE MARKED 'f'.



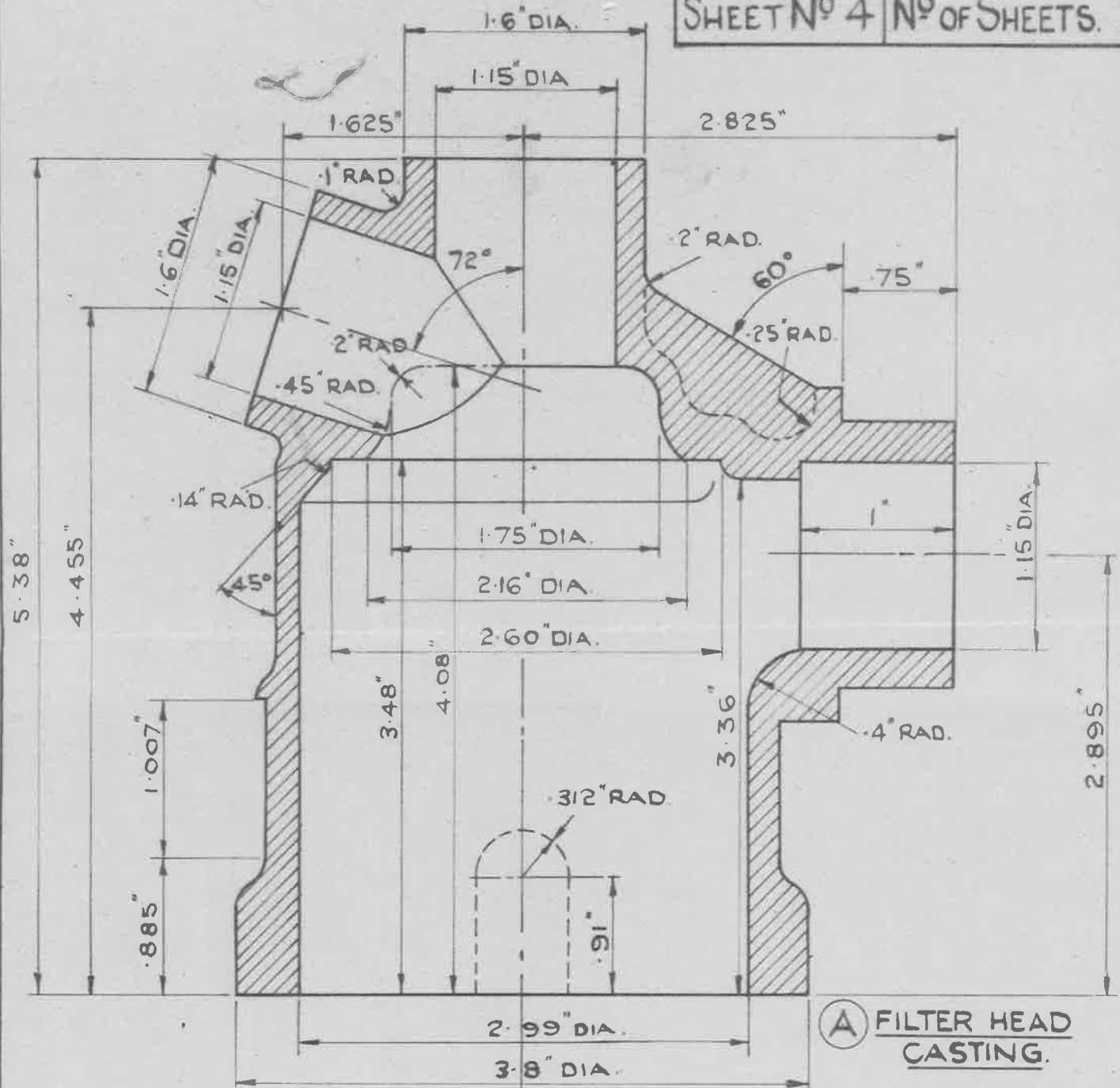
1.65" ± 0.010" FULL DIA. TOP OF THREAD SCREWED 1/4" B.S.P.

UNDERCUT .05" RAD. TO ROOT OF THREAD.

ALL DIMENSIONS, UNLESS OTHERWISE STATED, TO BE WITHIN ± .005"

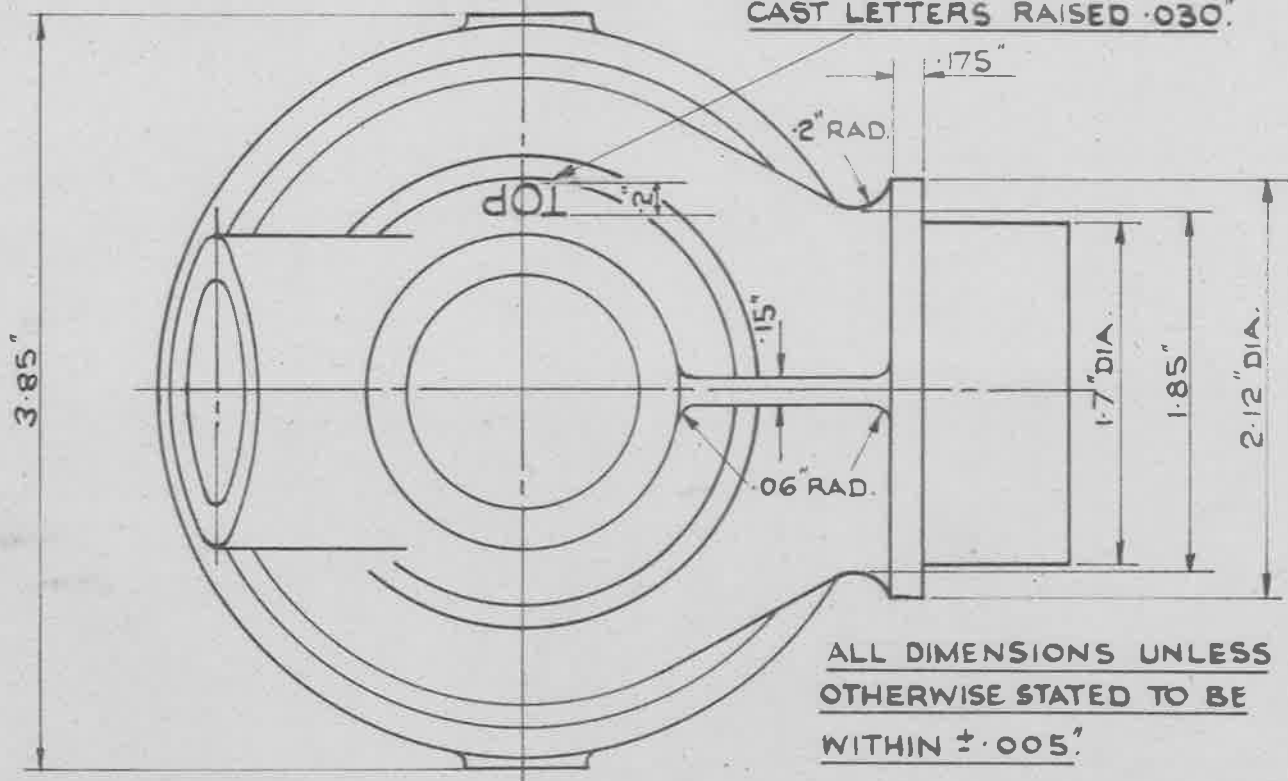
SCALE :- FULL SIZE.

ISSUED BY THE ROYAL AIRCRAFT ESTABLISHMENT.	TITLE:- 300 G.P.H. FUEL FILTER			DRAWN D.H.	TRACED. DIV. OF AIRCR. PR. F. LIVINGSTON. 1-6-48.
	ISSUE N°.	f	2		
	ALTER N°		MOR. N° 1008. A.G.S.		



(A) FILTER HEAD CASTING.

CAST LETTERS RAISED .030"



ALL DIMENSIONS UNLESS OTHERWISE STATED TO BE WITHIN $\pm .005$ "

ISSUED BY THE ROYAL AIRCRAFT

TITLE: - 300 G.P.H FUEL FILTER

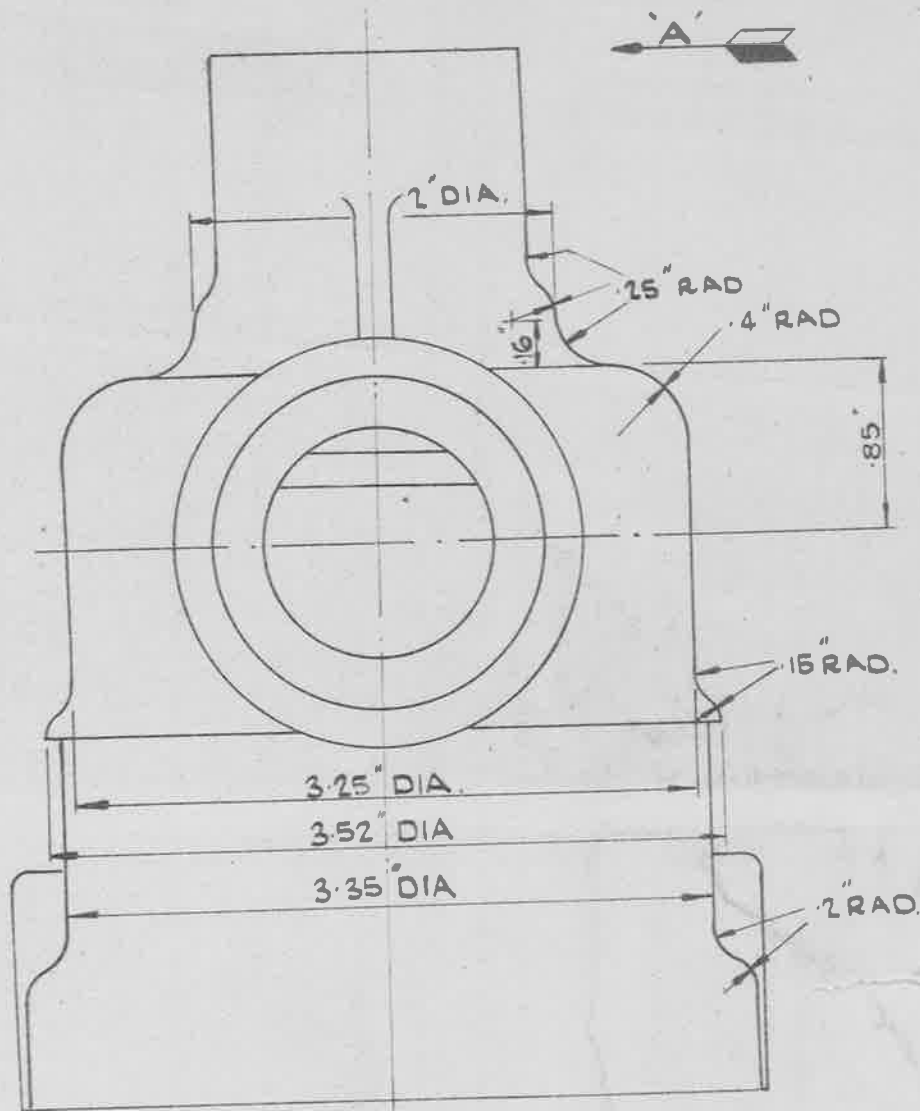
DRAWN D.H.

TRACED. DIV. OF AIRCR. PR. P. LIVINGSTON 1-6-48.

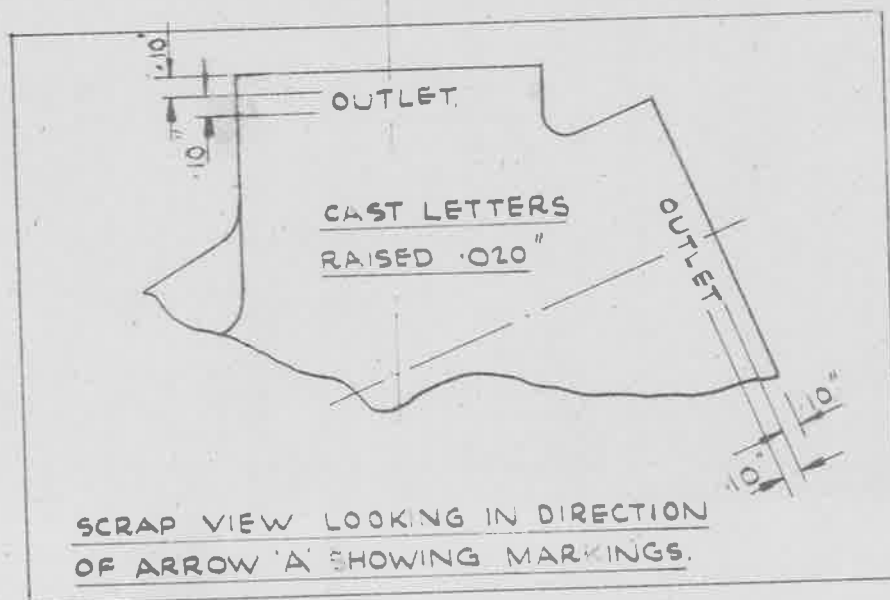
ISSUE NO 1 2

CHECKED

APPROVED.



(A) FILTER HEAD CASTING.



SCRAP VIEW LOOKING IN DIRECTION
OF ARROW 'A' SHOWING MARKINGS.

MATL: - ALUMINIUM ALLOY

SPEC: - L.33 (LATEST ISSUE)

ALL DIMENSIONS UNLESS OTHERWISE STATED TO BE WITHIN $\pm .005$ "

FINISH: - TO BE ANODISED TO SPEC: D.T.D. 910. (LATEST ISSUE)

ISSUED BY THE
ROYAL

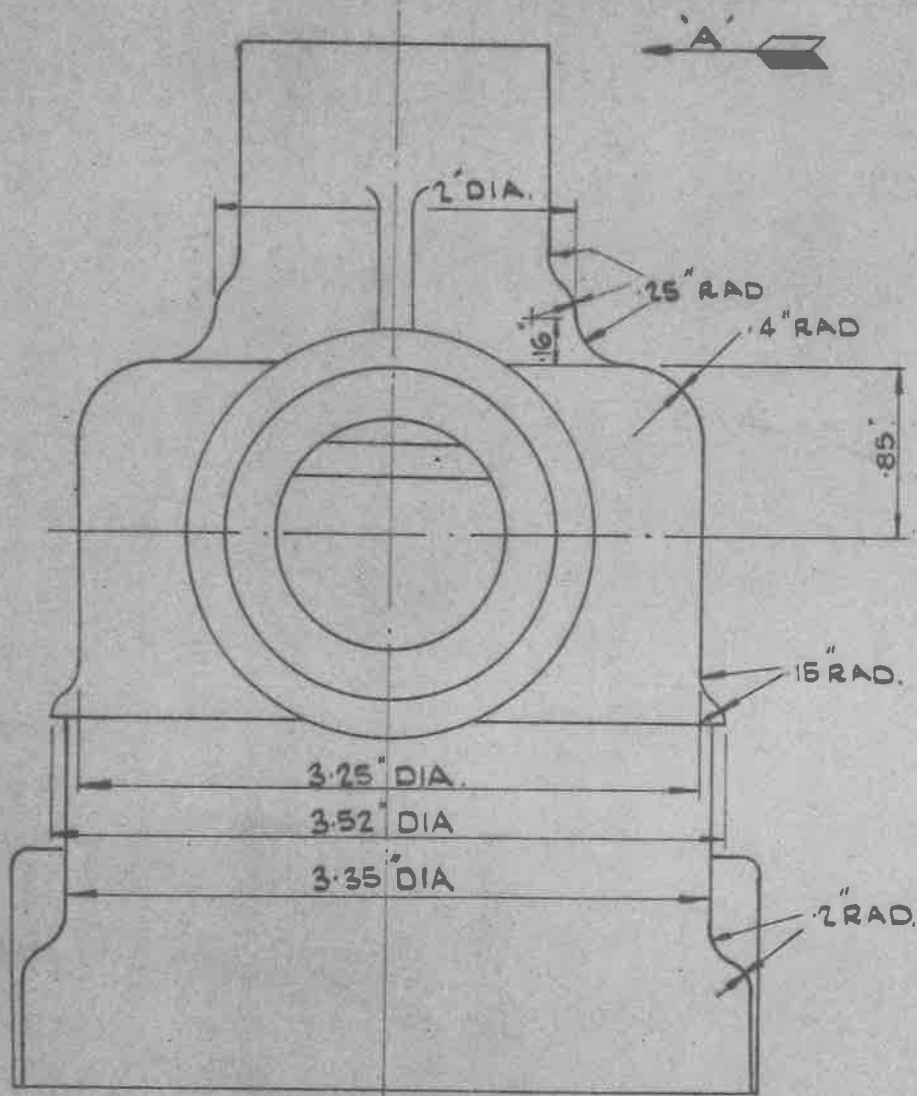
TITLE: -
300 G.P.H. FUEL FILTER

DRAWN.

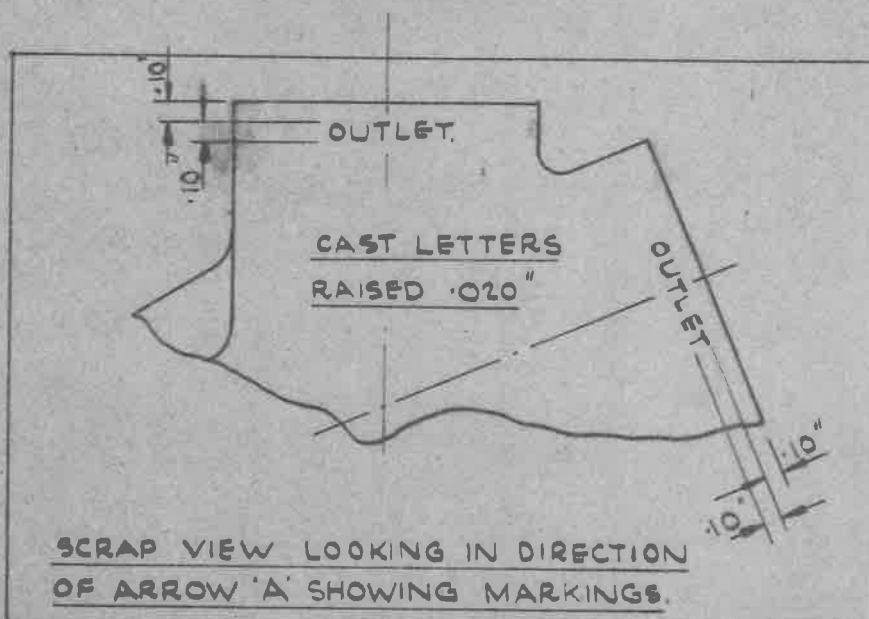
TRACED

CHECK

APPROVED



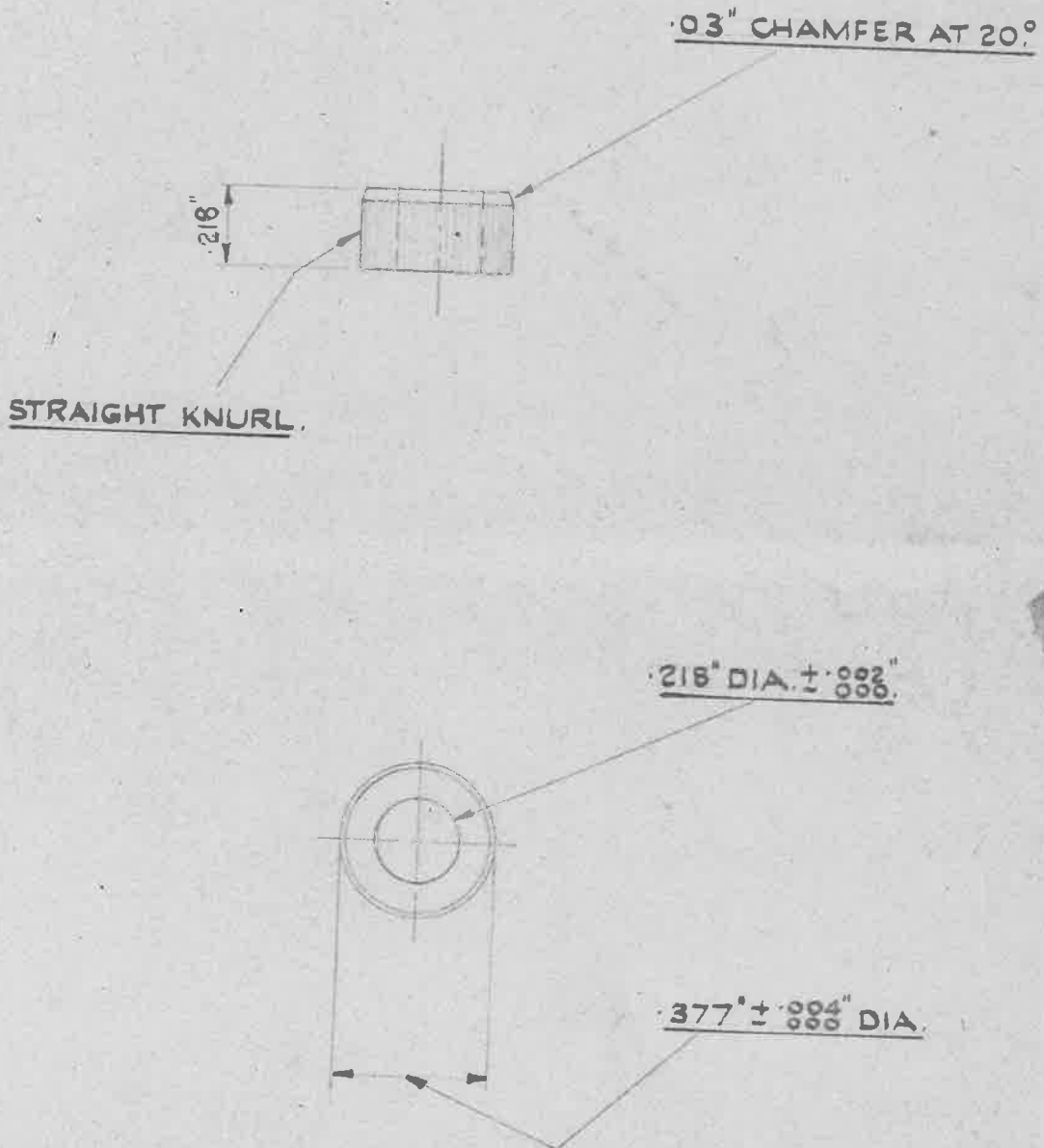
(A) FILTER HEAD CASTING.



MAT^l :- ALUMINIUM ALLOY

SPEC :- L 33 (LATEST ISSUE).

ALL DIMENSIONS UNLESS OTHERWISE STATED TO BE WITHIN $\pm .005$ "



(B) BEARING FOR FILTER HEAD.

MATERIAL - MILD STEEL TO B.S. SPEC. S.I. (LATEST ISSUE)

FINISH :- TO BE CADMIUM PLATED TO SPEC: OTD 904 (LATEST ISSUE).

NOTE -

ALL DIMENSIONS UNLESS OTHERWISE STATED TO BE WITHIN ± .003'

SCALE :- 2/1.

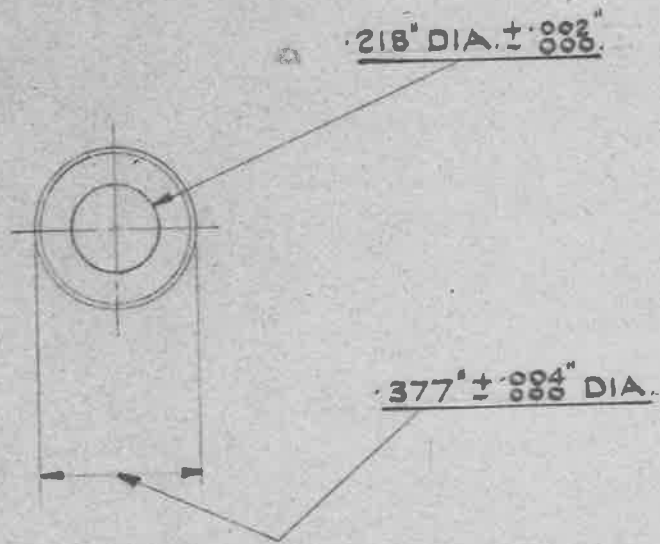
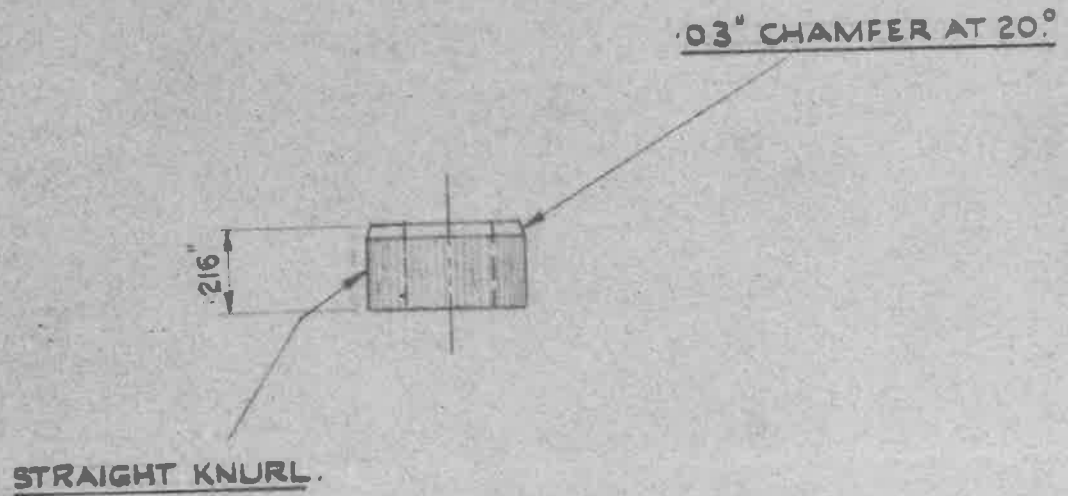
ISSUED BY THE
ROYAL
AIRCRAFT
ESTABLISHMENT

TITLE:-
300 G.P.H. FUEL FILTER.

DRAWN
D.H.

TRACED.
DIV. OF AIRCR. PR.
F. LIVINGSTON.
9.6.48.

ISSUE NO. 1 2



(B) BEARING FOR FILTER HEAD.

MATERIAL - MILD STEEL TO B.S. SPEC. 3.S.1.

FINISH :- CADMIUM COATED

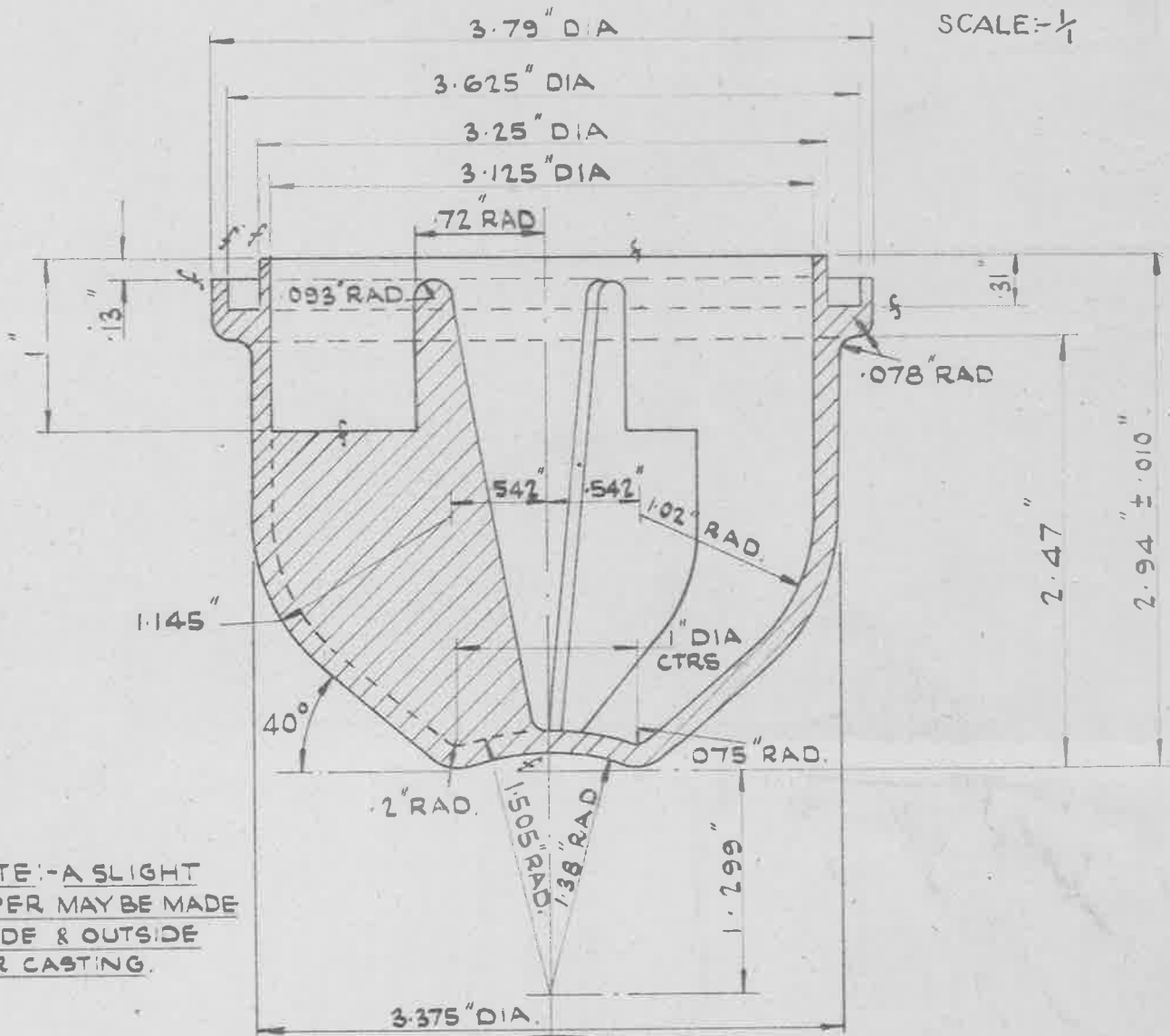
NOTE -

ALL DIMENSIONS UNLESS OTHERWISE STATED TO BE WITHIN ± .003'

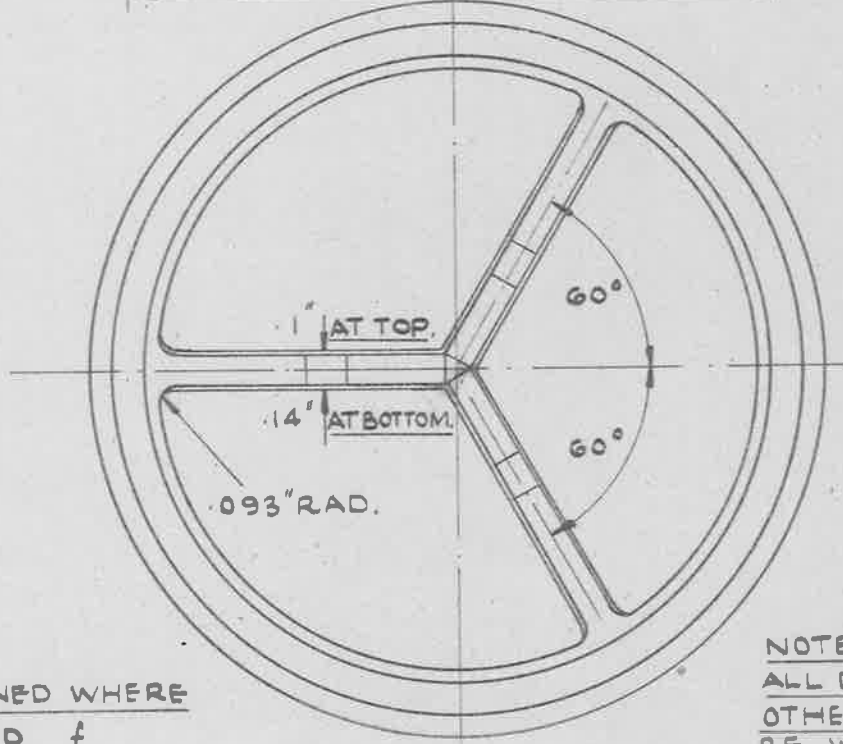
SCALE :- 2/1.

ISSUED BY THE ROYAL AIRCRAFT ESTABLISHMENT	TITLE :- 300 G.P.H. FUEL FILTER.					DRAWN D.H.	TRACED. DIV. OF AIRCR. P. F. LINDSAY 9.5.48.
	ISSUE NO.	1				CHECKED	APPROVED

SCALE: $\frac{1}{4}$



NOTE: - A SLIGHT
TAPER MAY BE MADE
INSIDE & OUTSIDE
FOR CASTING.



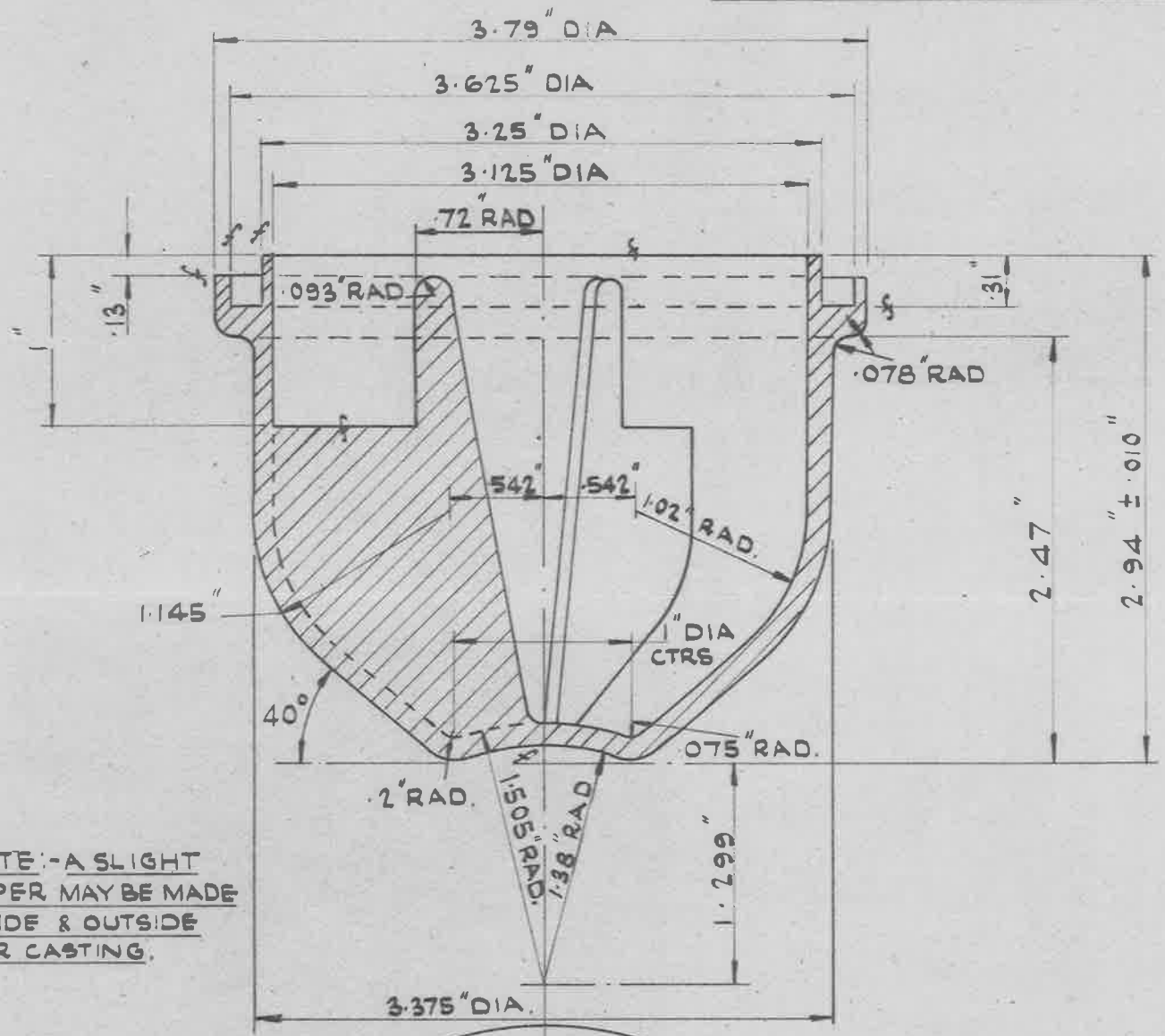
NOTE: -
MACHINED WHERE
MARKED *f*

NOTE: -
ALL DIMENSIONS UNLESS
OTHERWISE STATED TO
BE WITHIN ± .005"

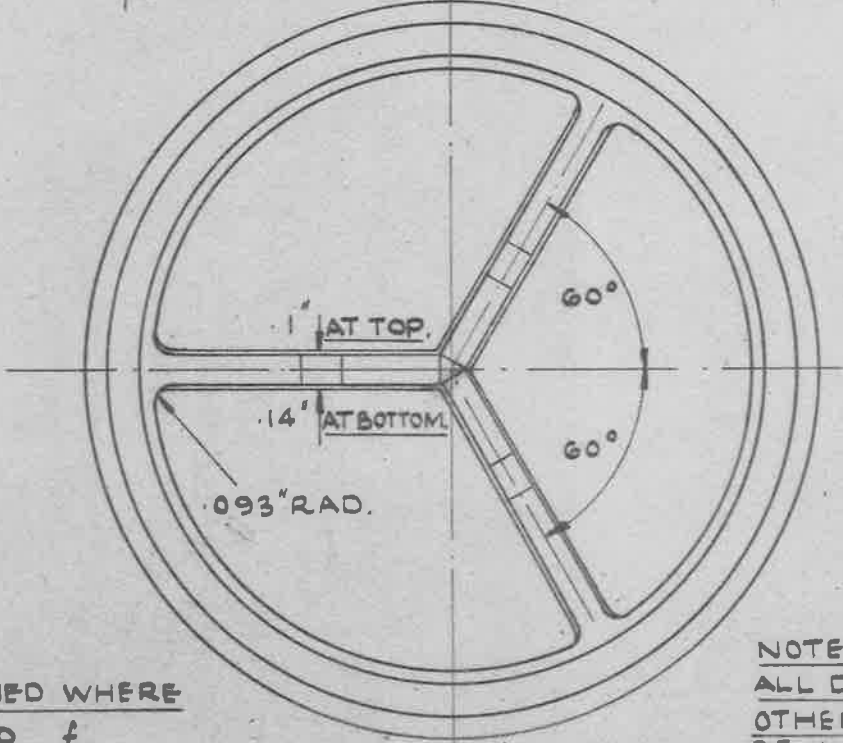
© SUMP.

MATE: - ALUMINIUM ALLOY TO SPEC. D.T.D. 304 OR 424. (LATEST ISSUE)
FINISH: - TO BE ANODISED TO SPEC: D.T.D. 910. (LATEST ISSUE)

ISSUED BY THE ROYAL AIRCRAFT	TITLE: - 300 G.P.H. FUEL FILTER.				DRAWN	TRACED
	ISSUE N ^o	1	2		CHECKED	APPROVED. MEP.



NOTE: - A SLIGHT TAPER MAY BE MADE INSIDE & OUTSIDE FOR CASTING.



NOTE: - MACHINED WHERE MARKED *f*

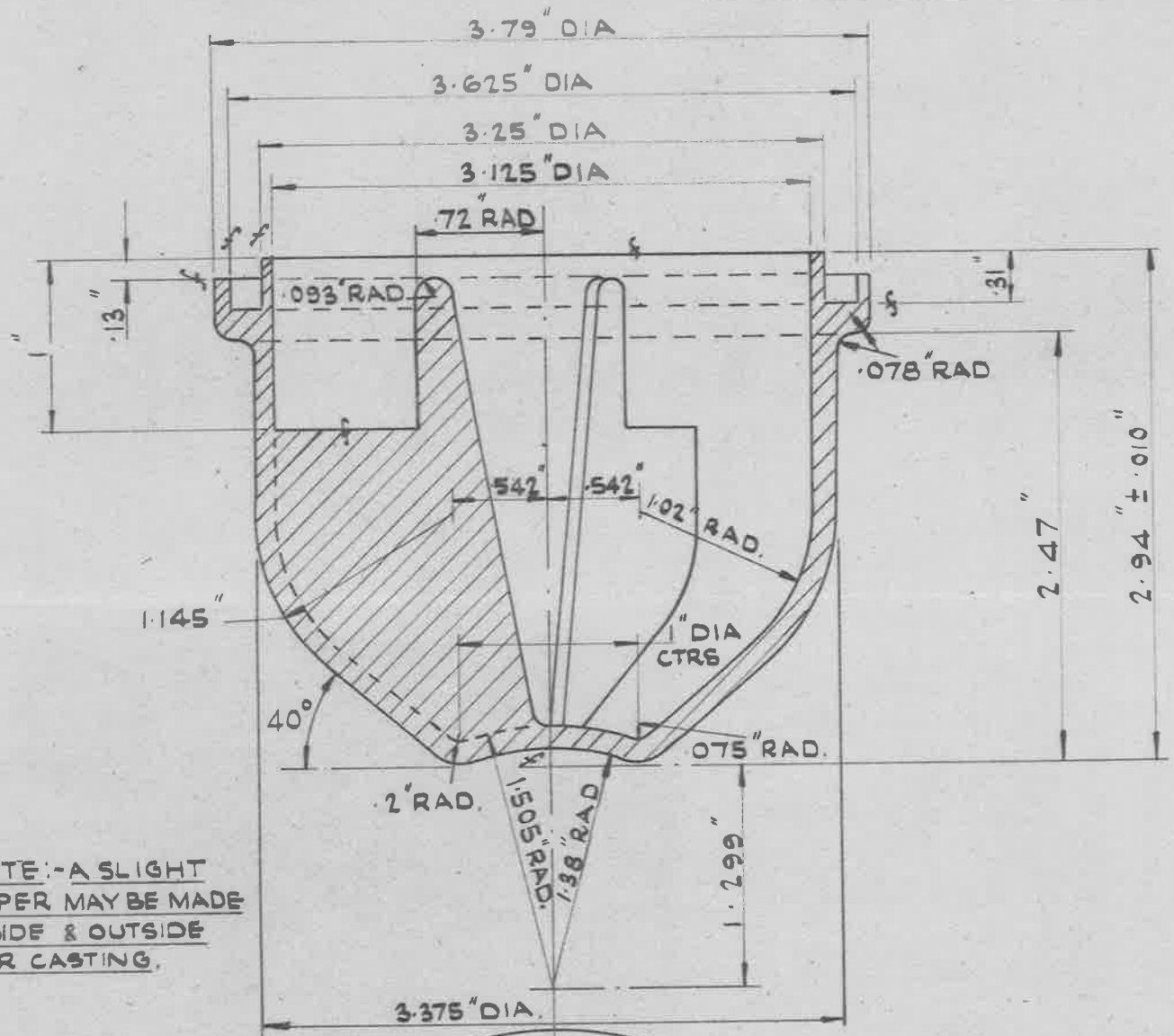
NOTE: - ALL DIMENSIONS UNLESS OTHERWISE STATED TO BE WITHIN ± 0.05"

© SUMP.

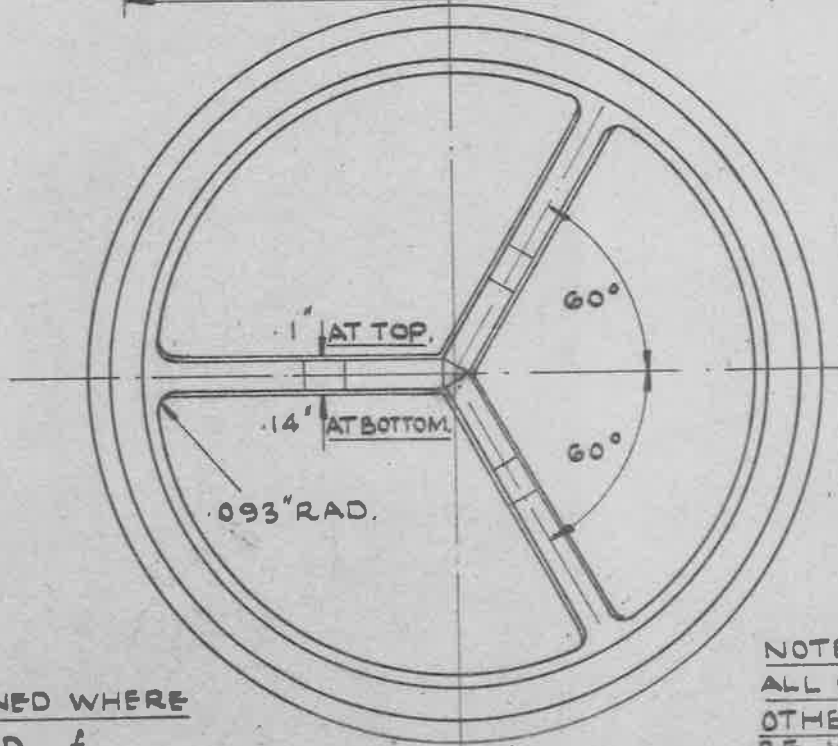
MATE: - ALUMINIUM ALLOY TO SPEC. D.T.D. 304 OR 424.
 FINISH: - BLACK ANODISED

SCALE: - FULL SIZE

ISSUED BY THE ROYAL	TITLE: - 300 G.P.H. FUEL FILTER.	DRAWN	TRACED MEP
---------------------	----------------------------------	-------	---------------



NOTE:- A SLIGHT
TAPER MAY BE MADE
INSIDE & OUTSIDE
FOR CASTING.



NOTE:-
MACHINED WHERE
MARKED f

NOTE:-
ALL DIMENSIONS UNLESS
OTHERWISE STATED TO
BE WITHIN ± .005"

© SUMP.

MATE:- ALUMINIUM ALLOY TO SPEC. D.T.D. 304 OR 424.
FINISH:- BLACK ANODISED

SCALE:- FULL SIZE

ISSUED BY THE
ROYAL

TITLE:-
300 G.P.H. FUEL FILTER.

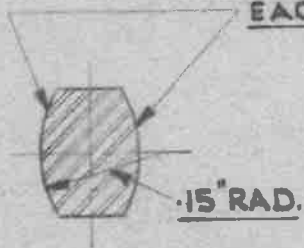
DRAWN

TRACED

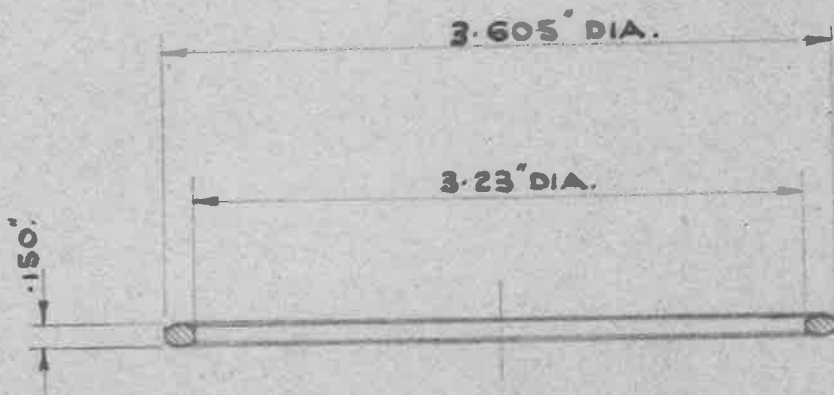
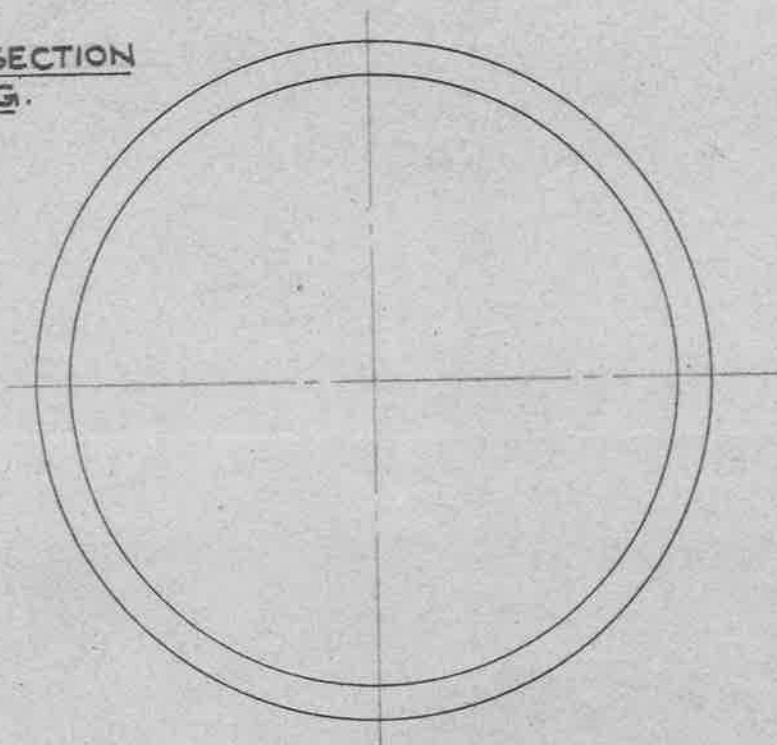
CHECKED

APPROVED.
MEP.

CLEAN SMOOTH SURFACE
EACH SIDE.



ENLARGED SECTION
OF RING.



(D) FILTER SUMP JOINT RING.

MATERIAL:- HALLPRENE N^o2.

SYNTHETIC RUBBER MOULDED.

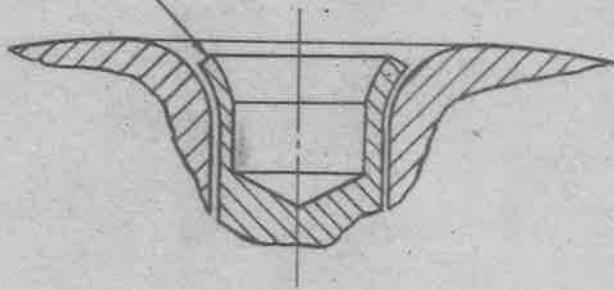
SCALE:- FULL SIZE.

MAT. SPEC.:- SHORE HARDNESS 40/45.

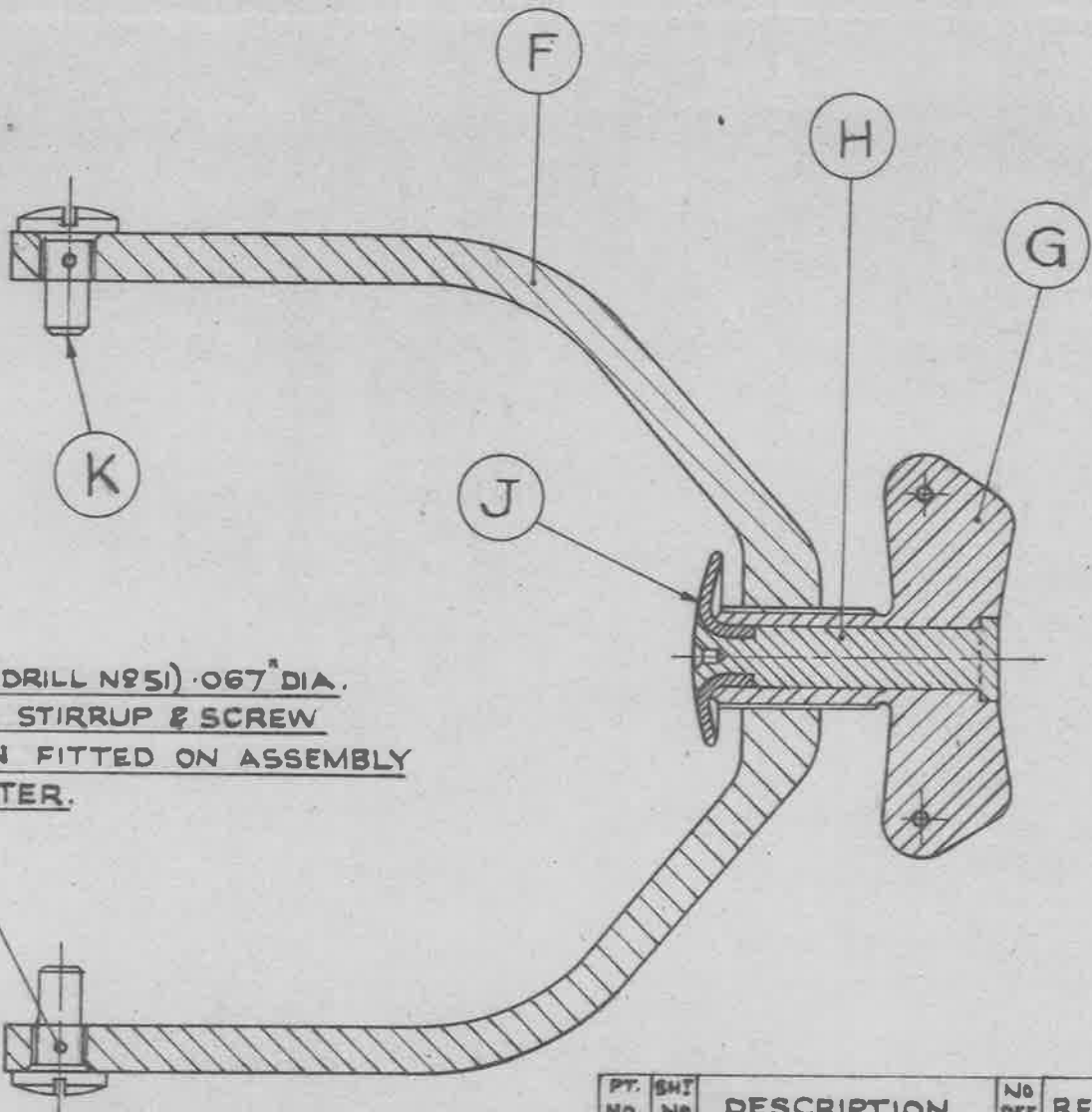
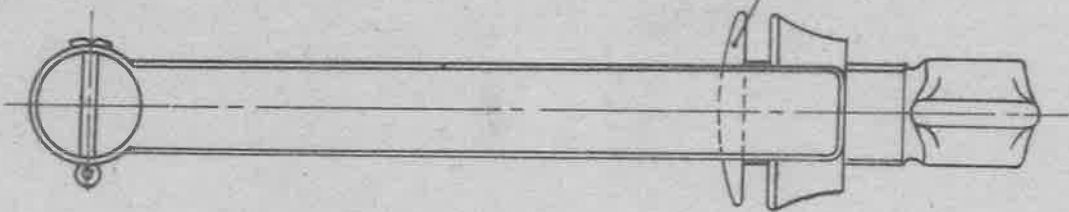
ALL DIMENSIONS UNLESS OTHERWISE STATED TO BE WITHIN ±.005."

ISSUED BY THE ROYAL AIRCRAFT ESTABLISHMENT, MINISTRY OF AIRCRAFT PRODUCTION	TITLE:- 300 G.P.H. FUEL FILTER				DRAWN D. Hopkins.	TRACED DIV. OF AIRCR. PR P. LIVINGSTON 9. 2. 45.
	ISSUE NO.	1			CHECKED.	APPROVED.

FREE FIT AT TURNED
END .004" CLEARANCE.



PIVOT TO ROTATE FREELY
AFTER ASSEMBLY.



2 HOLES (DRILL N°51) .067" DIA.
THROUGH STIRRUP & SCREW
SPLIT - PIN FITTED ON ASSEMBLY
WITH FILTER.

(E) STIRRUP ASSEMBLY.

SCALE :- FULL SIZE.

PT. No.	SH. No.	DESCRIPTION	No OFF	REMARKS.
		A.G.S. 1008.		
F	10	STIRRUP-FILTERSUMP	1	
G	11	CLAMPING SCREW	1	
H	12	CENTRE PIN	1	
J	13	END CAP	1	
K	14	STIRRUP SCREW	2	

ISSUED BY THE
ROYAL
AIRCRAFT

TITLE:—
300 G.P.H. FUEL FILTER

DRAWN
D.H.

TRACED
DIV. OF AIRC. PR.
E. LIVINGSTON
8-6-46.

ISSUE NO. 2

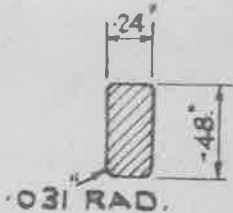
CHECKED APPROVED.

HOLE TAPPED $\frac{5}{16}$ " B.S. WHIT.
 THREAD (TO B.S. SPEC. N°84-1940
 MEDIUM FIT & C/SK $\frac{1}{32}$ " DIA AT
 90° ON OUTER EDGES.

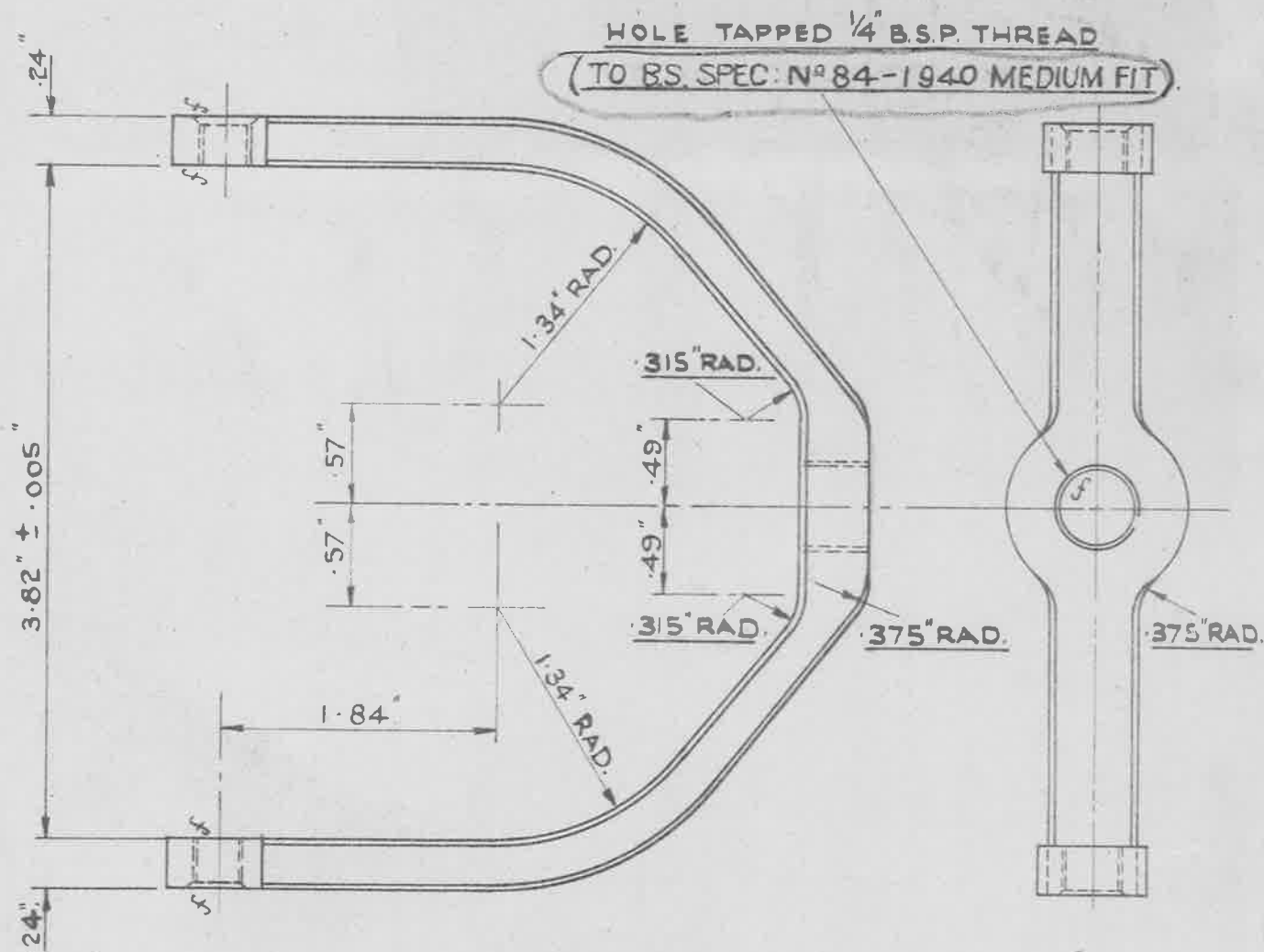
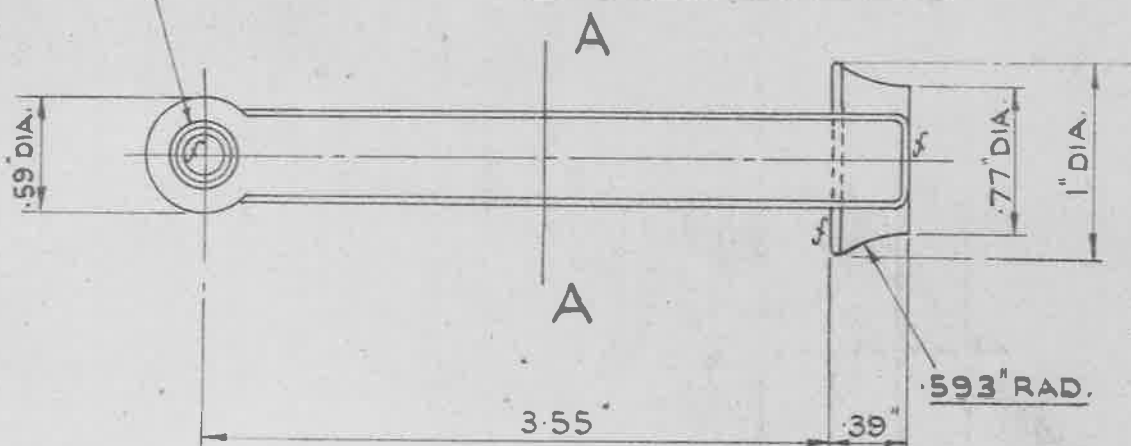
MINISTRY OF
 AIRCRAFT PRODUCTION. A.G.S. N°1008.

SHEET N° 10 N° OF SHEETS.

SCALE = $\frac{1}{4}$.



SECTION THROUGH A-A.



(F) STIRRUP - FILTER SUMP.

MATERIAL: TO BE CARBON STEEL (NORMALISED) TO B.S. SPEC: S.6. (LATEST ISSUE)

ALL MACHINED DIMENSIONS UNLESS OTHERWISE STATED TO BE WITHIN ± .01" MACHINE WHERE MARKED.

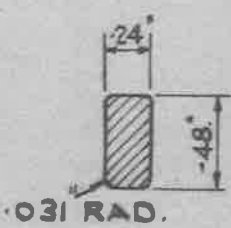
FINISH: - TO BE CADMIUM PLATED TO SPEC: O.T.D. 904 (LATEST ISSUE)

ISSUED BY THE ROYAL AIRCRAFT ESTABLISHMENT	TITLE: - 300 G.P.H. FUEL FILTER				DRAWN. D. H.	TRACED. BY: OF AIRCRAFT F. LIVINGSTON 8.6.48.
	ISSUE NO.	1	2	3		

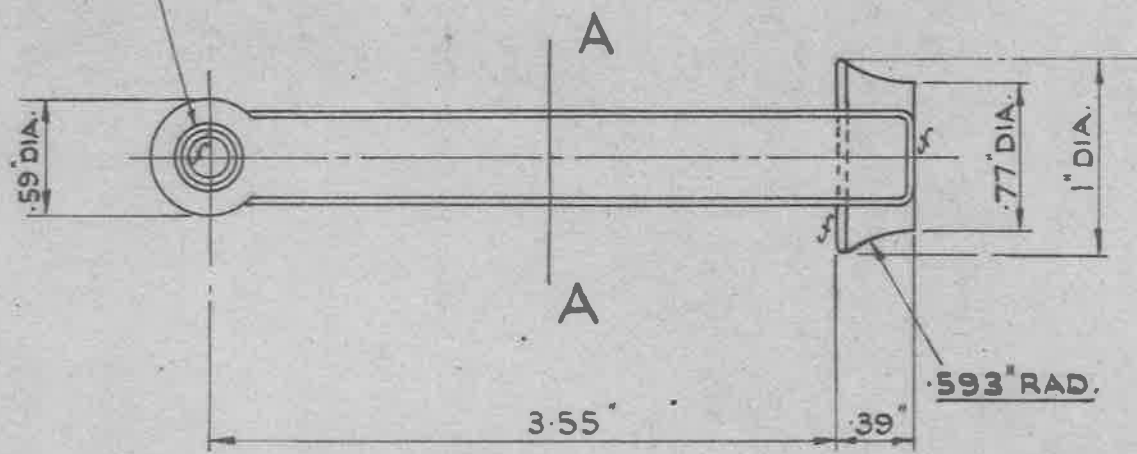
HOLE TAPPED $\frac{5}{16}$ " B.S. WHIT. THREAD (TO B.S.I. MEDIUM FIT LIMITS) & C/SK $\frac{1}{32}$ " DIA AT 90° ON OUTER EDGES.

MINISTRY OF AIRCRAFT PRODUCTION. A.G.S. N° 1008.

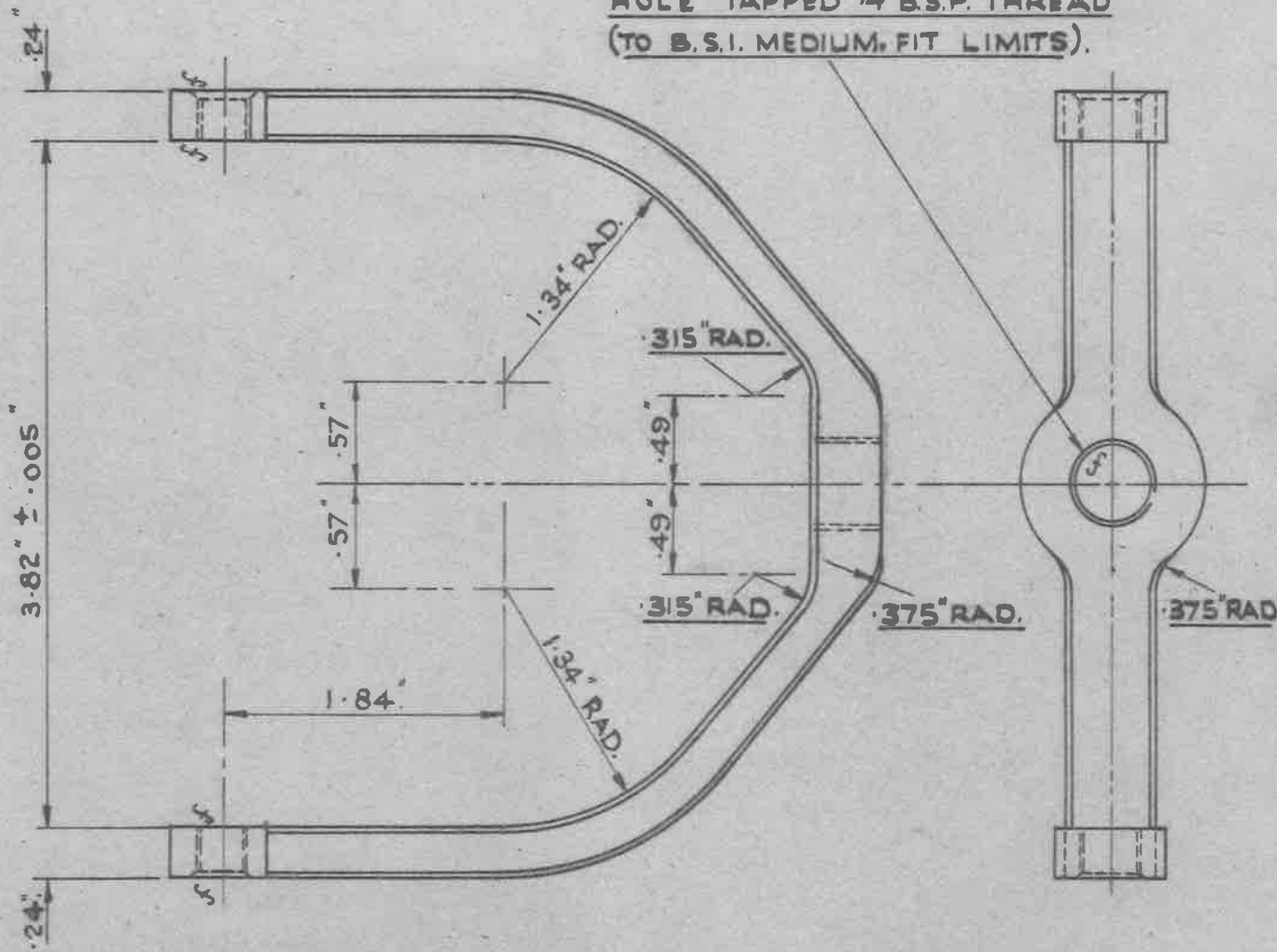
SHEET N° 10 N° OF SHEETS.



SECTION THROUGH A-A.



HOLE TAPPED $\frac{1}{4}$ " B.S.P. THREAD (TO B.S.I. MEDIUM FIT LIMITS).



(F) STIRRUP - FILTER SUMP.

MATERIAL:- 40" CARBON STEEL - NORMALISED

ALL MACHINED DIMENSIONS UNLESS OTHERWISE STATED TO BE WITHIN ± .01"

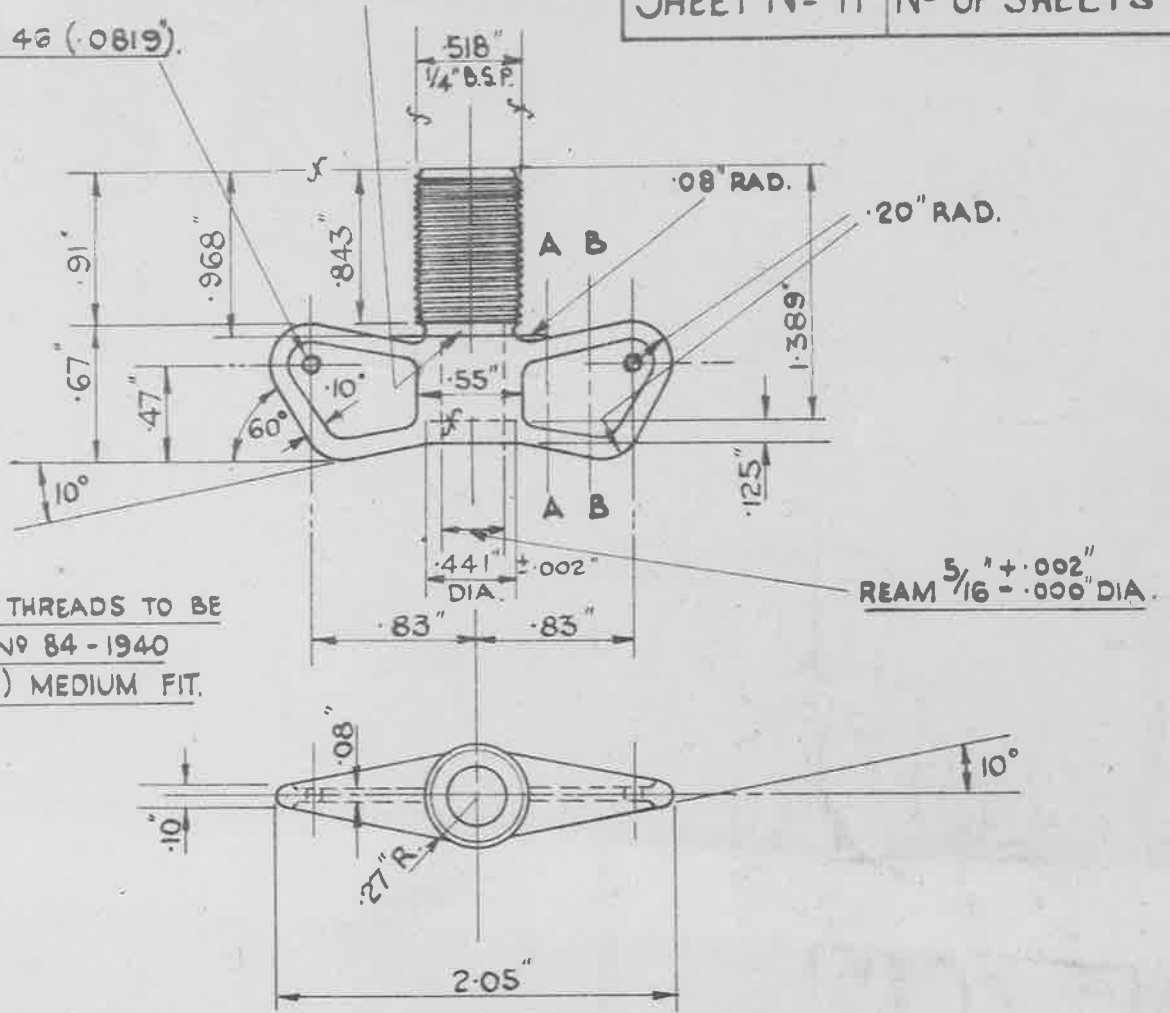
MACHINE WHERE MARKED f.

SCALE: FULL SIZE

ISSUED BY THE ROYAL AIRCRAFT	TITLE:-	DRAWN.	TRACED.
	300 G.P.H. FUEL FILTER	D. H.	Div. of Aircraft, P.O. F. LIVINGSTON, S.C. 48.
ISSUE NO.	1	CHECKED	APPROVED

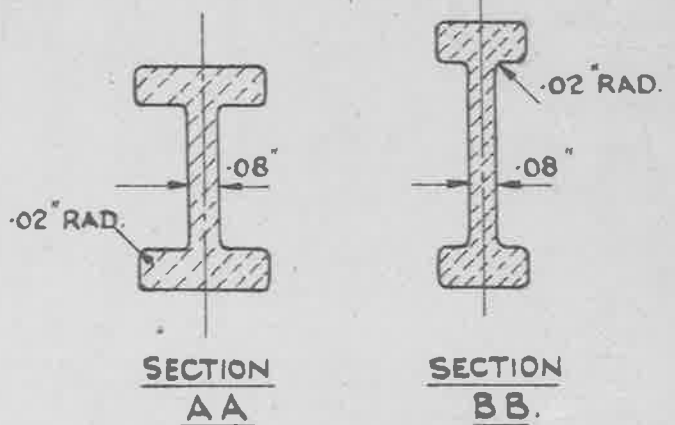
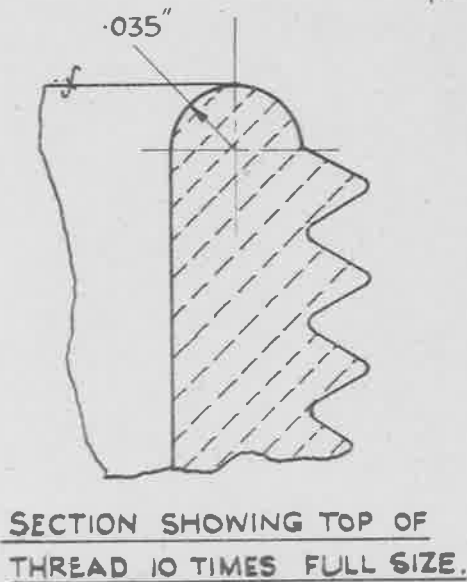
.125" WIDE UNDERCUT TO ROOT OF THREAD.

DRILL N^o 46 (.0819")



NOTE :- SCREW THREADS TO BE TO B.S. SPEC. N^o 84 - 1940 (LATEST ISSUE) MEDIUM FIT.

REAM 5/16" + .002" DIA. - .000" DIA.



G

CLAMPING SCREW-FILTER STIRRUP.

MACHINE TO f MARKS.

MATERIAL :- CARBON STEEL NORMALISED TO B.S. SPEC. S.G. (LATEST ISSUE).

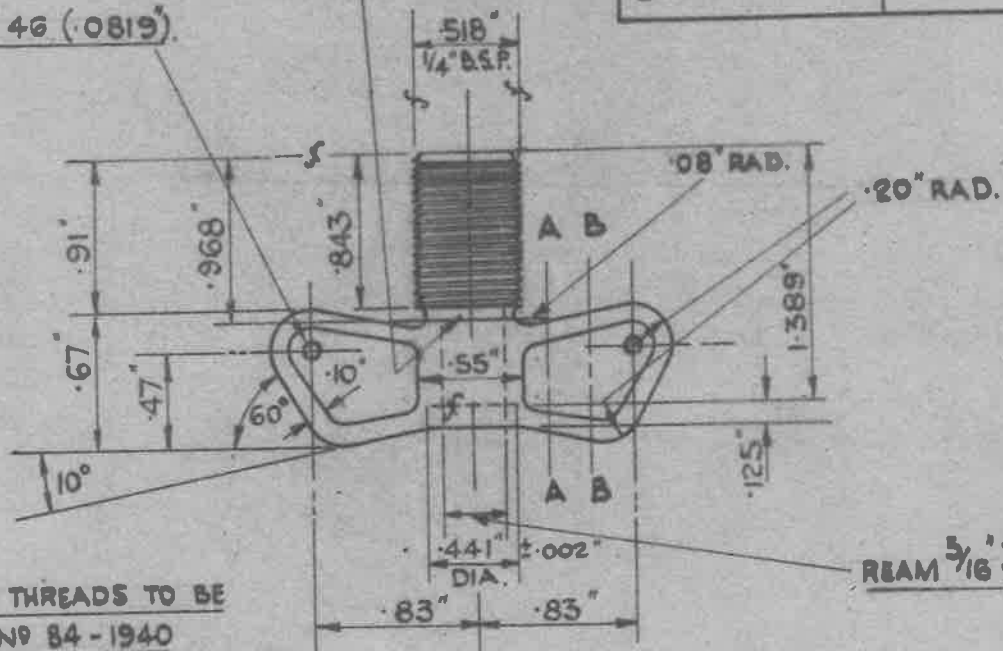
FINISH :- (TO BE CADMIUM PLATED TO SPEC. D.T.D. 904) (LATEST ISSUE).

ALL DIMENSIONS UNLESS OTHERWISE STATED TO BE WITHIN ± .005."

SCALE :- FULL SIZE.

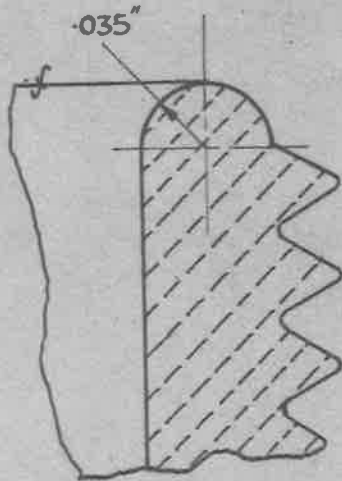
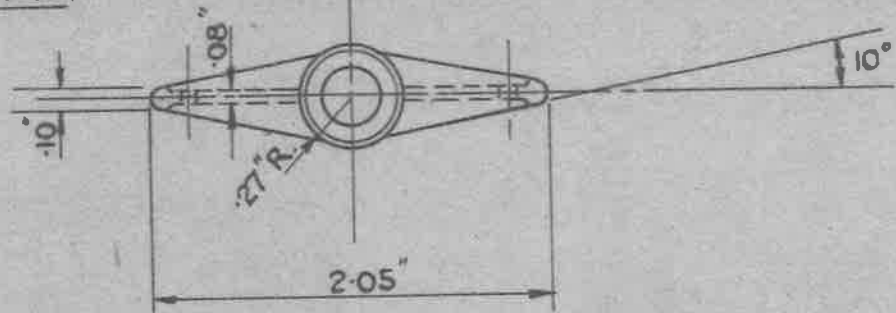
DRILL N° 46 (.0819)

.125" WIDE UNDERCUT TO ROOT OF THREAD.

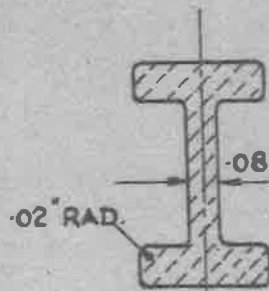


REAM $\frac{3}{16}$ " $\pm .002$ " DIA.

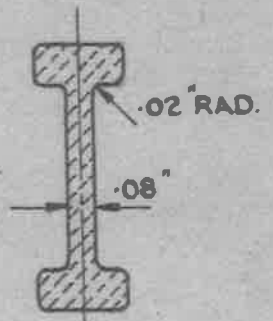
NOTE :- SCREW THREADS TO BE TO B.S. SPEC. N° 84-1940 (LATEST ISSUE) MEDIUM FIT.



SECTION SHOWING TOP OF THREAD 10 TIMES FULL SIZE.



SECTION AA



SECTION BB

(G)

CLAMPING SCREW-FILTER STIRRUP.

MACHINE TO f MARKS.

MATERIAL :- CARBON STEEL NORMALISED TO B.S. SPEC. S.G. (LATEST ISSUE).

FINISH :- ZINC OR CADMIUM PLATED TO SPEC. D.T.D. 903 OR 904 (LATEST ISSUE).

ALL DIMENSIONS UNLESS OTHERWISE STATED TO BE WITHIN $\pm .005$."

SCALE - FULL SIZE.

ISSUED BY THE ROYAL AIRCRAFT ESTABLISHMENT.

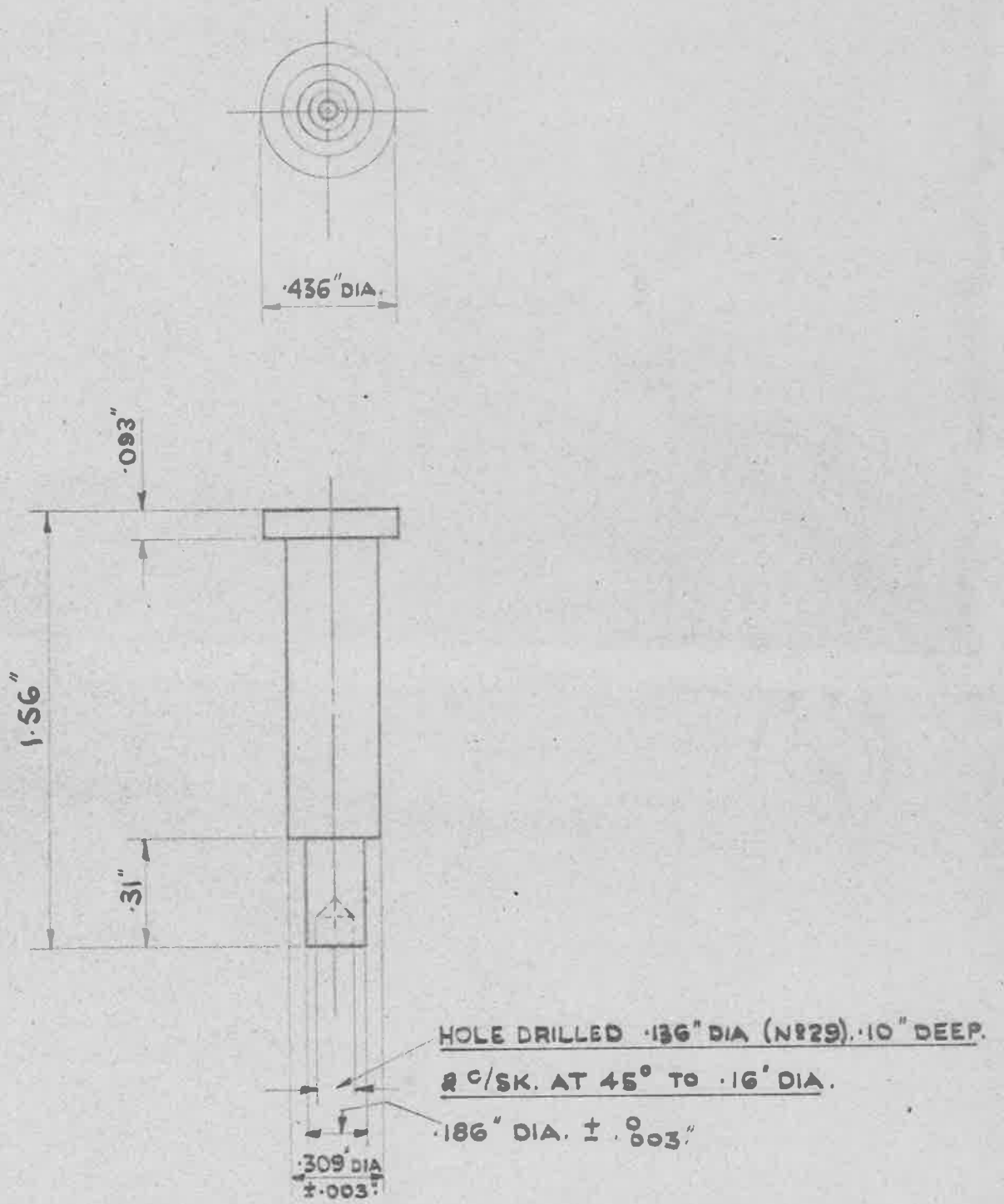
TITLE :- 300 G.P.H. FUEL FILTER.

DRAWN. D. H.

TRACED. P. LIVINGSTON, DIV. OF AIRCRAFT, P. E. 46.

ISSUE N° X 2

CHECKED APPROVED



(H) CENTRE PIN (CLAMPING SCREW).

MATERIAL: MILD STEEL TO B.S. SPEC. S.1. (LATEST ISSUE).

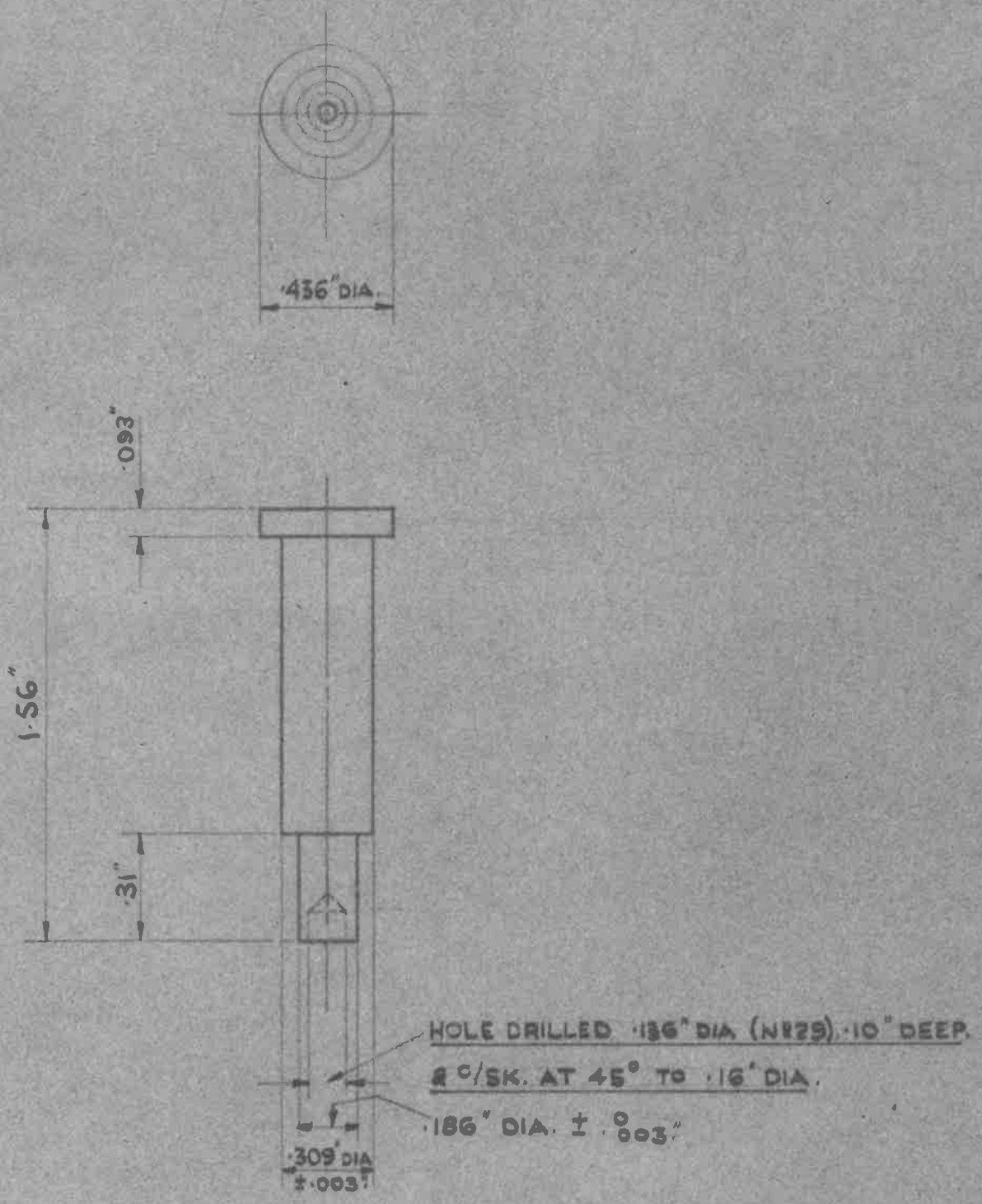
FINISH: TO BE CADMIUM PLATED TO SPEC. D.T.D. 904 (LATEST ISSUE).

ALL DIMENSIONS UNLESS OTHERWISE STATED TO BE WITHIN ± .005".

MACHINE ALL OVER.

SCALE: TWICE FULL SIZE.

ISSUED BY ROYAL AIRCRAFT ESTABLISHMENT, MINISTRY OF AIRCRAFT PRODUCTION.	TITLE:- 300 G.P.H. FUEL FILTER.				DRAWN. D. H.	TRACED. D.W. DEARCE. PR. F. LIVINGSTON. 9.6.45
	ISSUE N ^o	1	2	3	CHECKED	APPROVED.
	ALTER ⁿ N ^o	108/599	3GB	AGY/60		



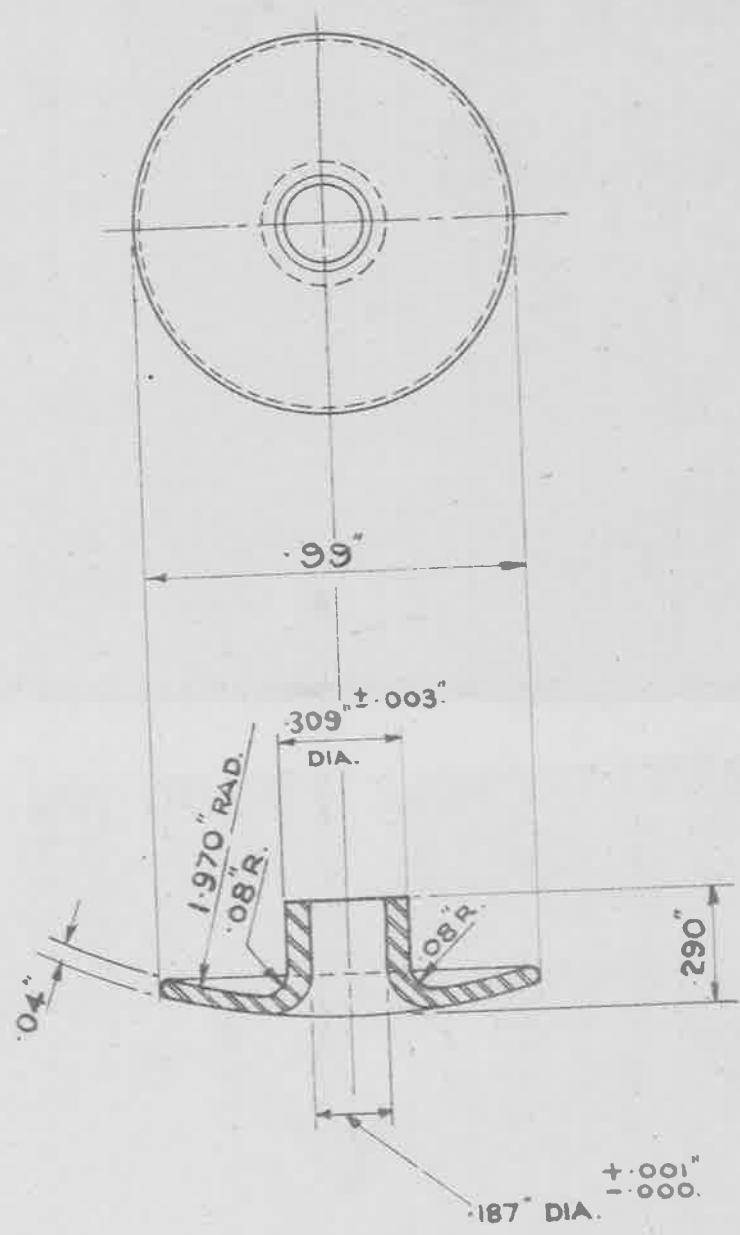
(H) CENTRE PIN (CLAMPING SCREW)

MATERIAL: MILD STEEL TO B.S. SPEC. S.1. (LATEST ISSUE).
FINISH: ZINC OR CADMIUM PLATED TO SPEC. D.T.D. 903 OR 904 (LATEST ISSUE).
ALL DIMENSIONS UNLESS OTHERWISE STATED TO BE WITHIN ± .005".
MACHINE ALL OVER

SCALE: TWICE FULL SIZE

ISSUED BY ROYAL AIRCRAFT ESTABLISHMENT, MINISTRY OF AIRCRAFT PRODUCTION.	TITLE:- 300 GPH. FUEL FILTER.				DRAWN. D. H.	TRACED. BY BRANCE, PG. F. LIVINGSTON. S.O. 43
	ISSUE N°	1	2			
	ALTER N°					

(P).



ⓐ END CAP (CENTRE PIN)

MATERIAL :- MILD STEEL TO BS. SPEC. S.I. (LATEST ISSUE).

FINISH :- TO BE CADMIUM PLATED TO SPEC. D.T.D. 904 (LATEST ISSUE).

ALL DIMENSIONS UNLESS OTHERWISE STATED TO BE WITHIN ± .005"

MACHINE ALL OVER.

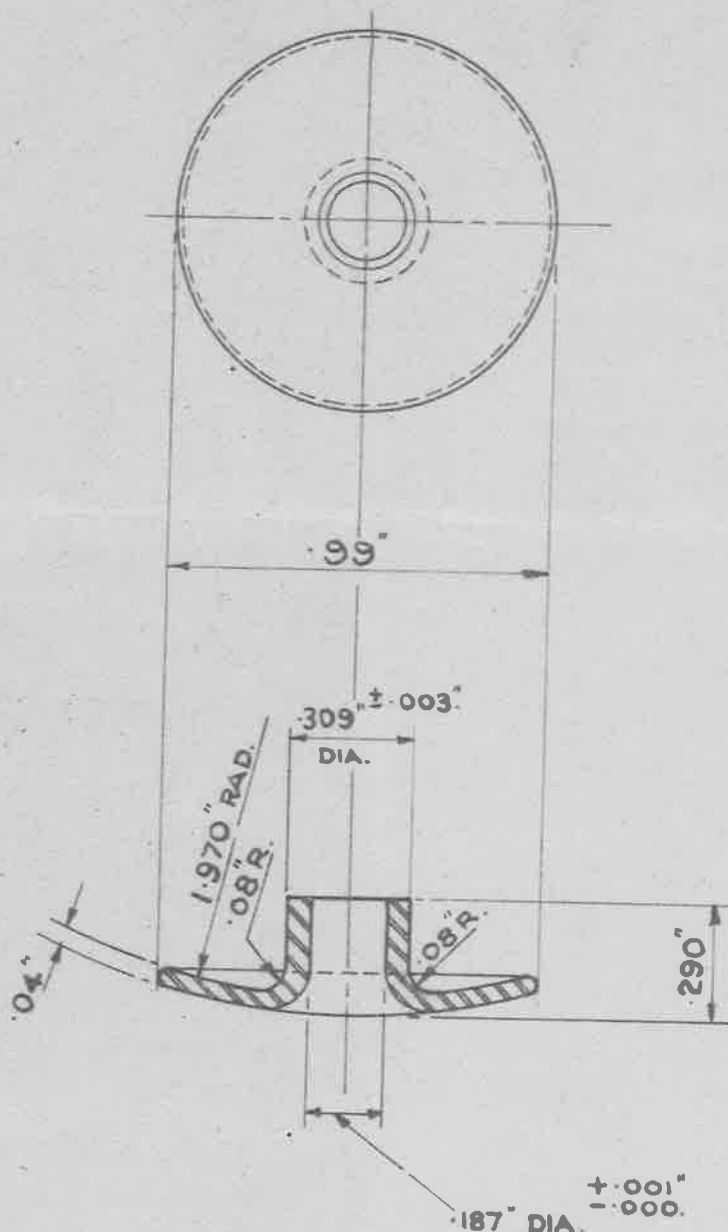
SCALE :- $\frac{2}{1}$

ISSUED BY ROYAL AIRCRAFT	TITLE :- 300 G.P.H. FUEL FILTER.	DRAWN D.H.	TR D.V. F.L.N 10
		CHECKED.	APP

(P)

MINISTRY OF AIRCRAFT PRODUCTION A.G.S. N^o 1008

SHEET N^o 13. N^o OF SHEETS.



ⓐ END CAP (CENTRE PIN)

MATERIAL :- MILD STEEL TO B.S. SPEC. S.I. (LATEST ISSUE).

FINISH :- ZINC OR CADMIUM PLATED TO SPEC. D.T.D. 903 OR 904 (LATEST ISSUE).

ALL DIMENSIONS UNLESS OTHERWISE STATED TO BE WITHIN ± 0.005"

MACHINE ALL OVER.

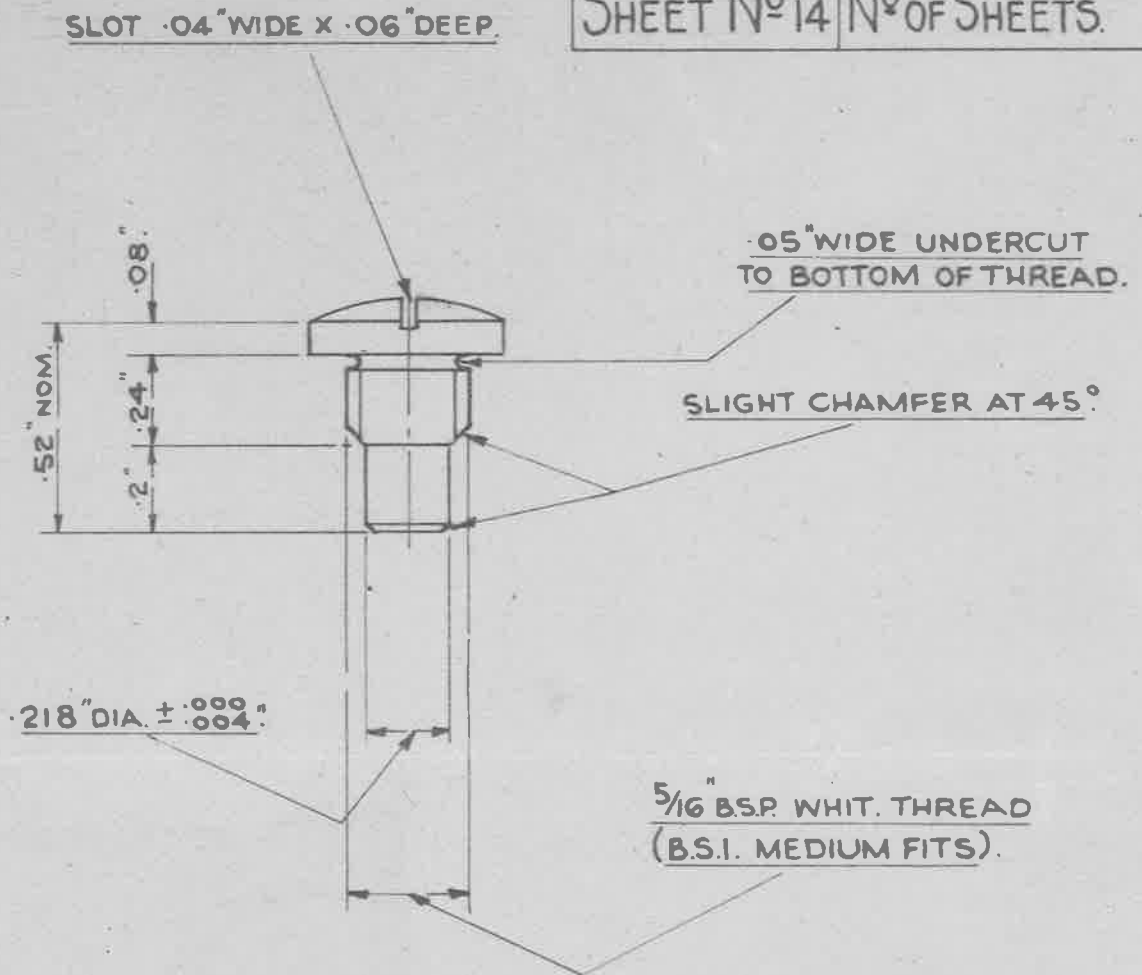
SCALE :- $\frac{2}{1}$

ISSUED BY
ROYAL AIRCRAFT
ESTABLISHMENT

TITLE :-
300 G.P.H. FUEL FILTER

DRAWN
D. H.

TRACED.
DIV. OF AIRCRAFT PR.
F. LIVINGSTON



(K) STIRRUP SCREW.

MATERIAL :- MILD STEEL TO B.S. SPEC. 351.

FINISH :- CADMIUM PLATED.

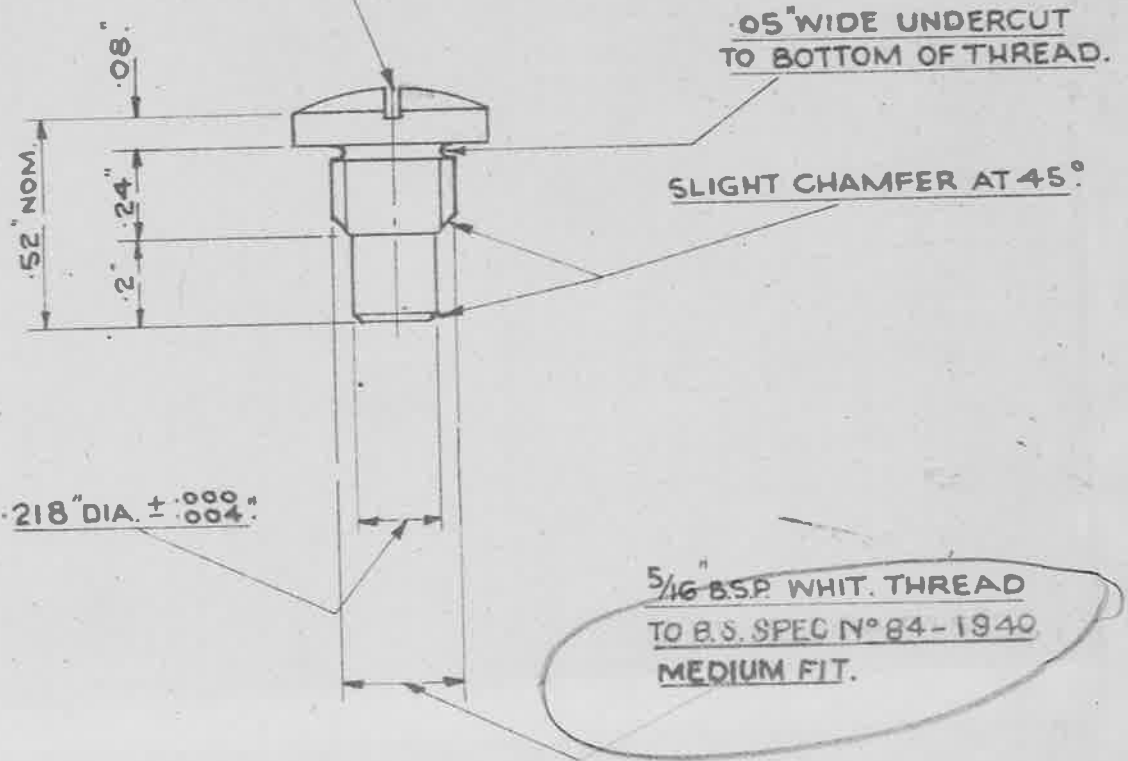
NOTE :-

ALL DIMENSIONS UNLESS OTHERWISE STATED TO BE WITHIN. ± .003."

SCALE :- 2/1.

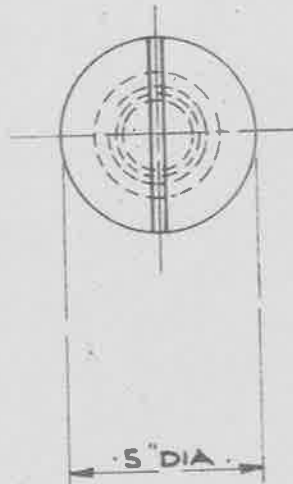
ISSUED BY THE ROYAL AIRCRAFT	TITLE :- 300 G.P.H. FUEL FILTER.				DRAWN D. H.	RE-TRACED. DN. OF AIRCR. PR. P. LIVINGSTON 24. 5. 48
	ISSUE NO.	1			CHECKED	APPROVED

SLOT .04" WIDE X .06" DEEP.



.218" DIA. \pm .0004"

5/16" BSP WHIT. THREAD
TO B.S. SPEC N° 84-1940
MEDIUM FIT.



5" DIA.

(K) STIRRUP SCREW.

MATERIAL :- MILD STEEL TO B.S. SPEC. 351. (LATEST ISSUE)

FINISH :- TO BE CADMIUM PLATED TO SPEC: D.T.D. 904 (LATEST ISSUE)

NOTE :-

ALL DIMENSIONS UNLESS OTHERWISE STATED TO BE WITHIN. \pm .003."

SCALE :- 2/1

ISSUED BY THE ROYAL AIRCRAFT

TITLE :- 300 G.P.H. FUEL FILTER.

ISSUE NO.

1

2

DRAWN D.H.

CHECKED

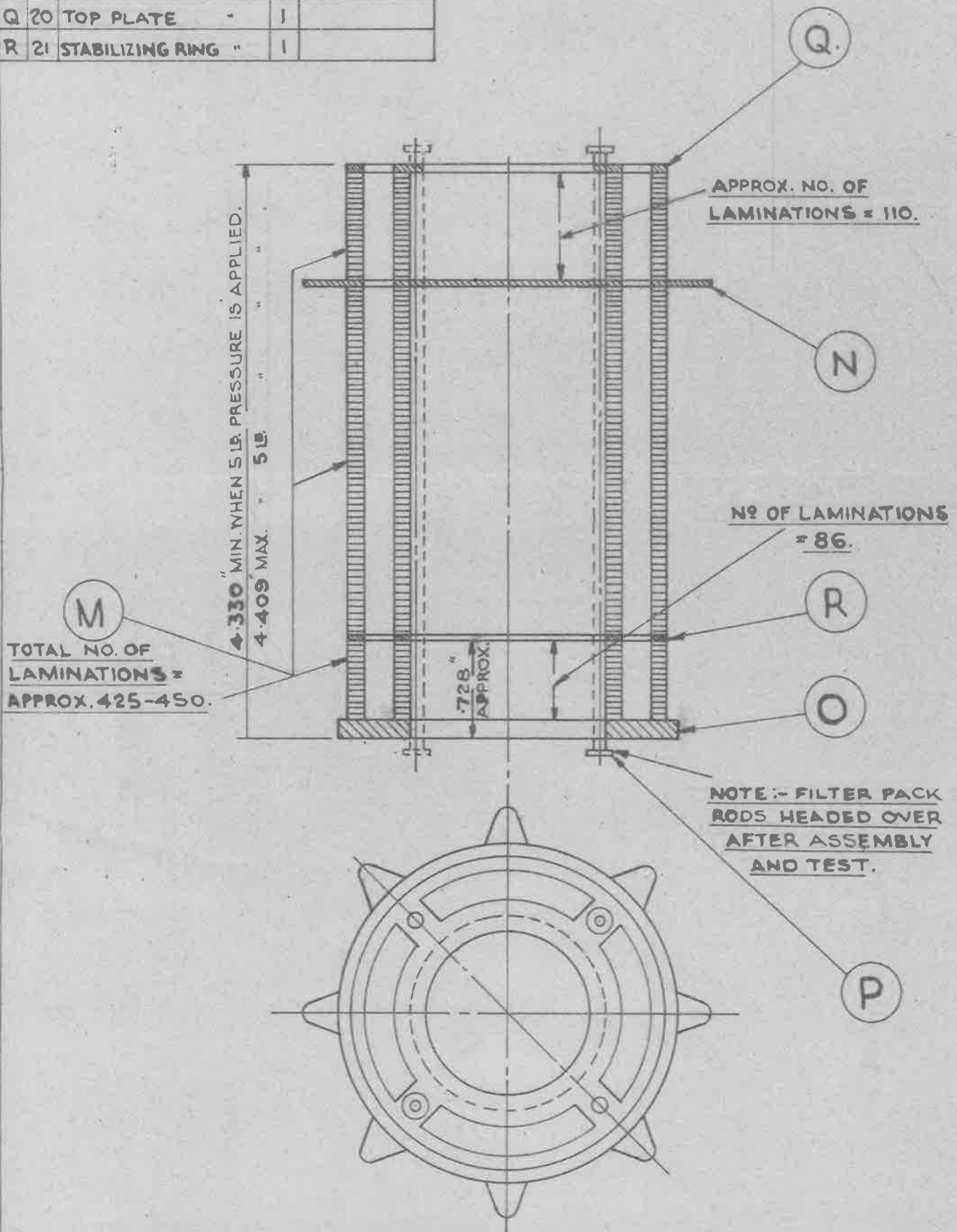
RE-TRACED DIV. OF AIRCR. P.F. LIVINGSTON 24.5.48

APPROVED

PT. NO.	SHT. NO.	DESCRIPTION	NO. OFF.	REMARKS
		A. G. S. 1008		
M	16	LAMINATION FILTER PACK.	AS REQUIRED.	
N	17	BAFFLE PLATE "	1	
O	18	BOTTOM RING "	1	
P	19	ROD "	2	
Q	20	TOP PLATE "	1	
R	21	STABILIZING RING "	1	

MINISTRY OF AIRCRAFT PRODUCTION. A.G.S. N° 1008

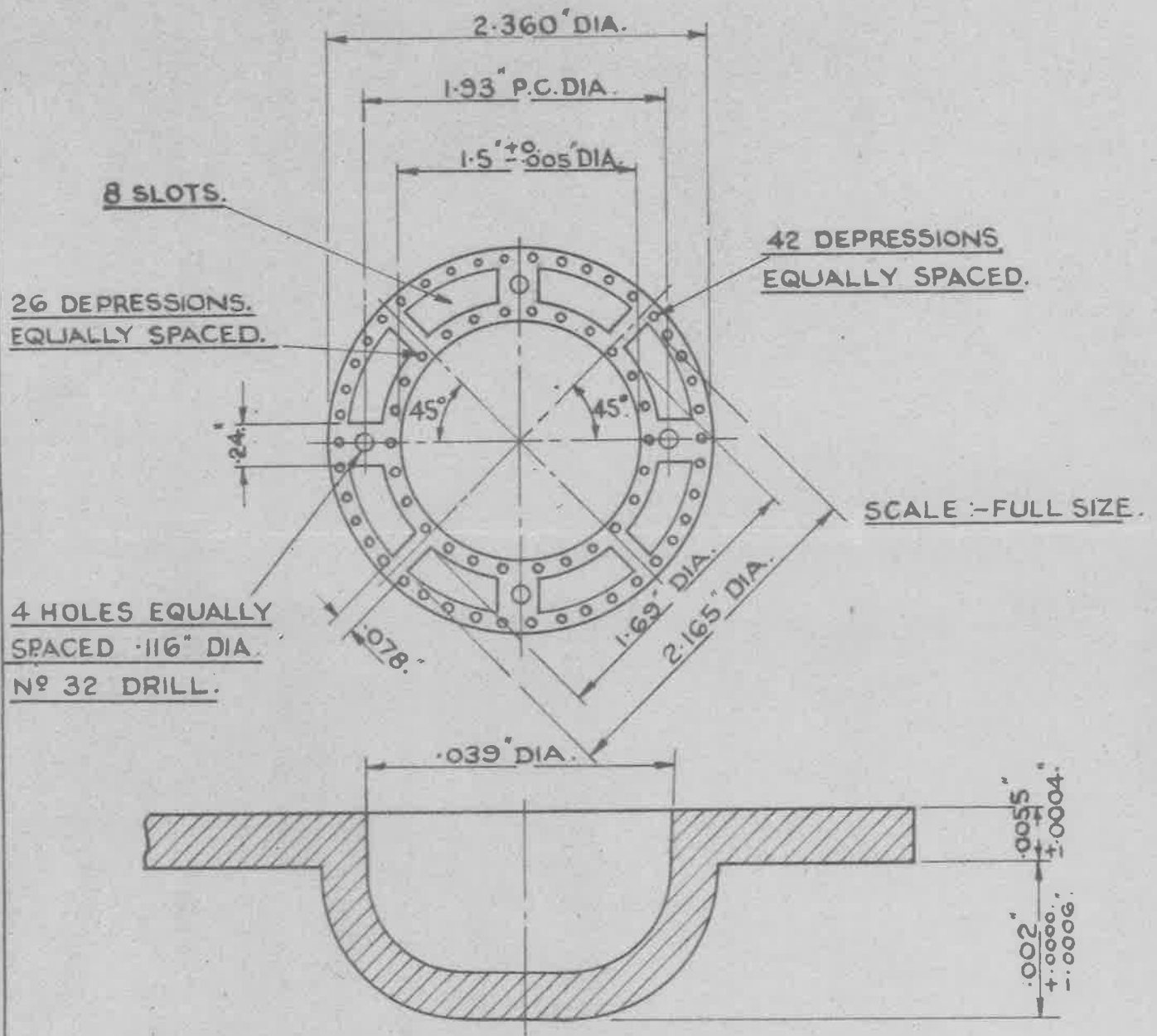
SHEET N° 15 N° OF SHEETS



L FILTER PACK ASSEMBLY.

SCALE :- FULL SIZE.

ISSUED BY THE ROYAL AIRCRAFT ESTABLISHMENT. MINISTRY OF	TITLE:- 300 G.P.H. FUEL FILTER.	DRAWN D.H.	RE-TRACED DIV. OF AIRCR. PR. F. LIVINGSTON. 25.6.48
	ISSUE NO. 1	CHECKED	APPROVED



ENLARGEMENT OF DEPRESSION.

ALL DIMENSIONS, UNLESS OTHERWISE STATED, TO BE WITHIN ± 0.005 "

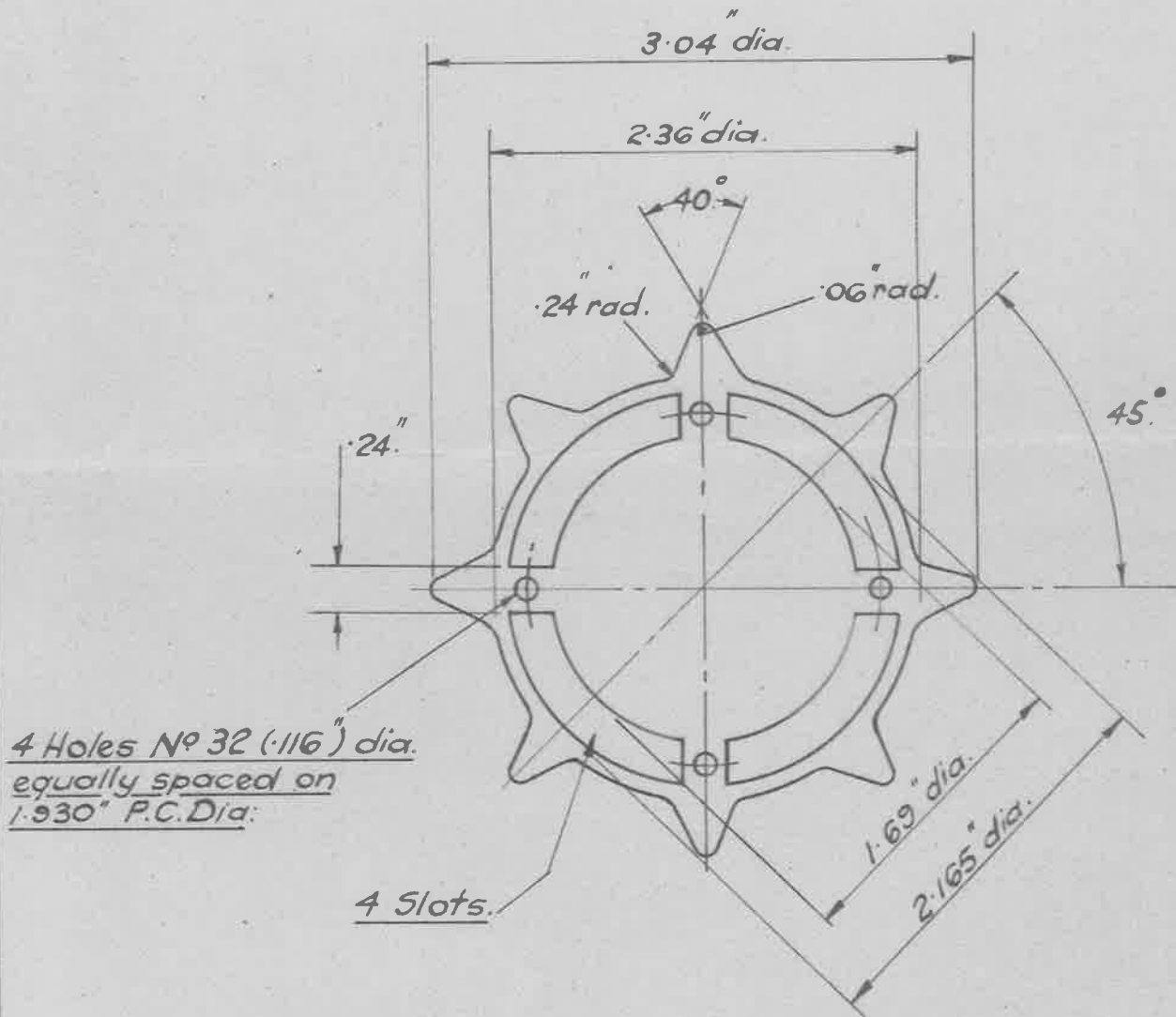
(M) FILTER LAMINATION.

MATERIAL:- HARD ALUMINIUM SHEET TO B.S.SPEC. L 4. (LATEST ISSUE).

NOTE:- PUNCHED EDGES MUST BE CLEAN, AND FREE FROM ALL TRACES OF BURRS.

FINISH:- ANODISED TO SPEC. D.T.D. 910 (LATEST ISSUE).

ISSUED BY THE ROYAL AIRCRAFT ESTABLISHMENT MINISTRY OF	TITLE:- 300 G.P.H. FUEL FILTER.				DRAWN D. Hopkins.	RETRACED. F. LIVINGSTON 22.7.48.
	ISSUE No	1			CHECKED	APPROVED.



16 S.W.G. (.064) thick.

(N) BAFFLE PLATE, FILTER PACK.

Material:- Hard Aluminium Sheet to B.S. Spec. L.4. (Latest Issue).

Note:- Punched edges must be clean and free from all traces of Burrs.

All dimensions unless otherwise stated, to be within $\pm .005$ ".

Finish:- Anodised to Spec.

D.T.D. 910 (Latest Issue).

Scale :- Full Size.

ISSUED BY THE ROYAL
AIRCRAFT
ESTABLISHMENT
MINISTRY OF

TITLE :-
300 G.P.H. FUEL FILTER.

ISSUE No.

1.

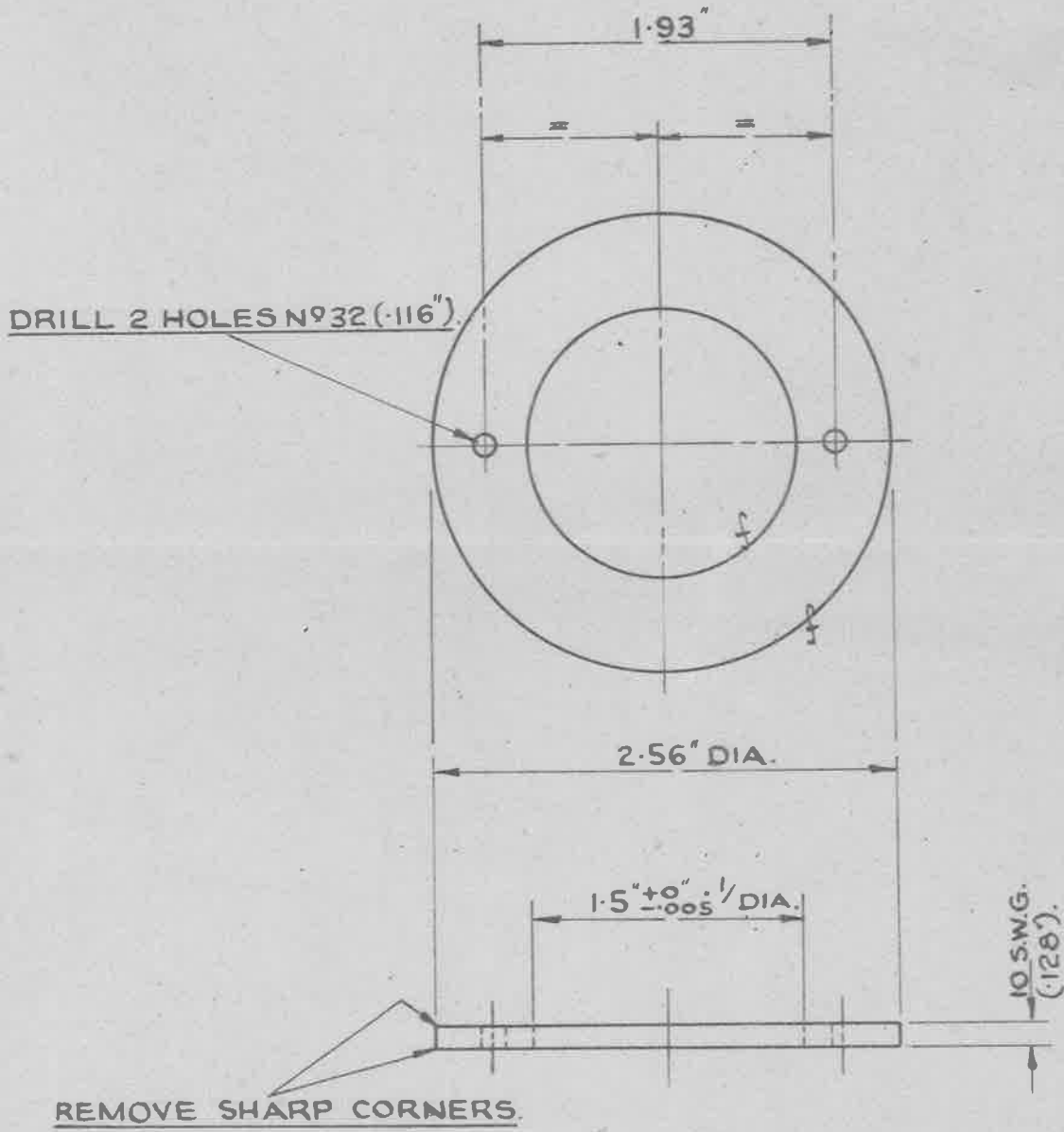
DRAWN

RE-TRACED

F. LIVINGSTON.
22.7.48.

CHECKED.

APPROVED.



⊙ BOTTOM RING :- FILTER PACK.

MATERIAL :- HARD ALUMINIUM SHEET TO B.S. SPEC. L.4. (LATEST ISSUE).

FINISH :- ANODISED TO SPEC. D.T.D. 910 (LATEST ISSUE).

ALL DIMENSIONS, UNLESS OTHERWISE STATED TO BE WITHIN $\pm .005$ ".

MACHINE TO f MARKS.

SCALE :- FULL SIZE

ISSUED BY THE ROYAL AIRCRAFT ESTABLISHMENT. MINISTRY OF AIRCRAFT PRODUCTION.	TITLE:- 300 G.P.H. FUEL FILTER.				DRAWN. D. Hopkins.	RE-TRACED F. LIVINGSTON. 22.7.48.
	ISSUE N ^o	1			CHECKED	APPROVED.

BRAZED.

DRILL N^o 49 (.073").
.400" DEEP.

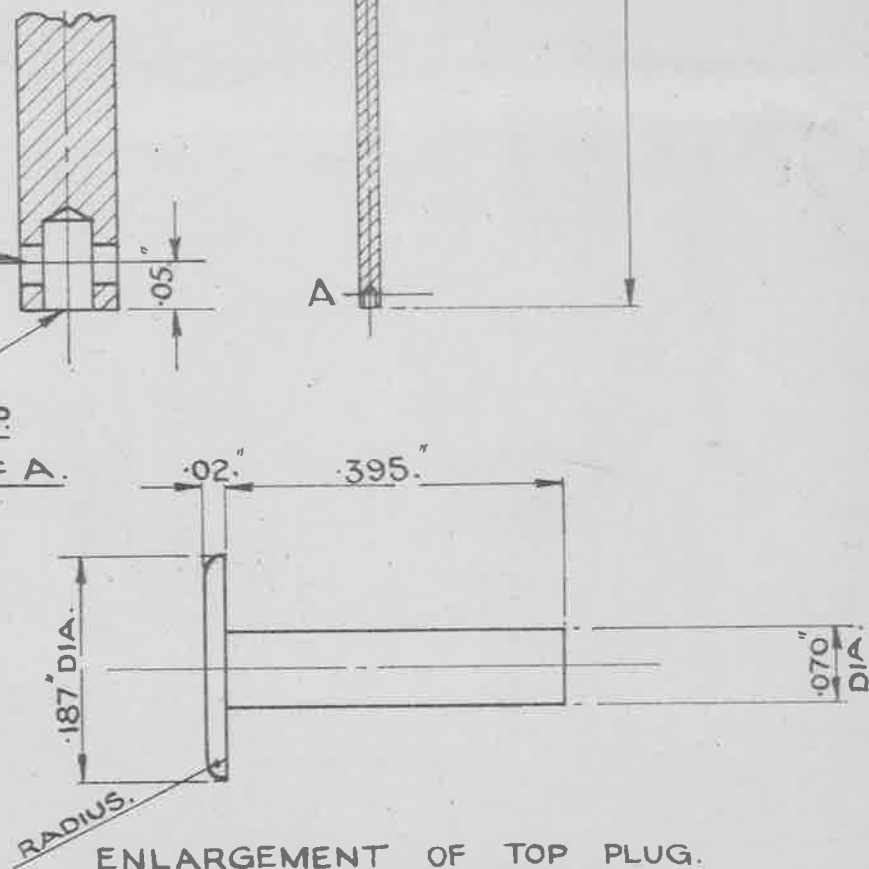
12 S.W.G.
(.104") DIA.

4.527"

DRILL N^o 58
(.042").

DRILL N^o 55
(.052") .093" DEEP.

ENLARGED VIEW OF A.



ENLARGEMENT OF TOP PLUG.

(P) ROD - FILTER PACK.

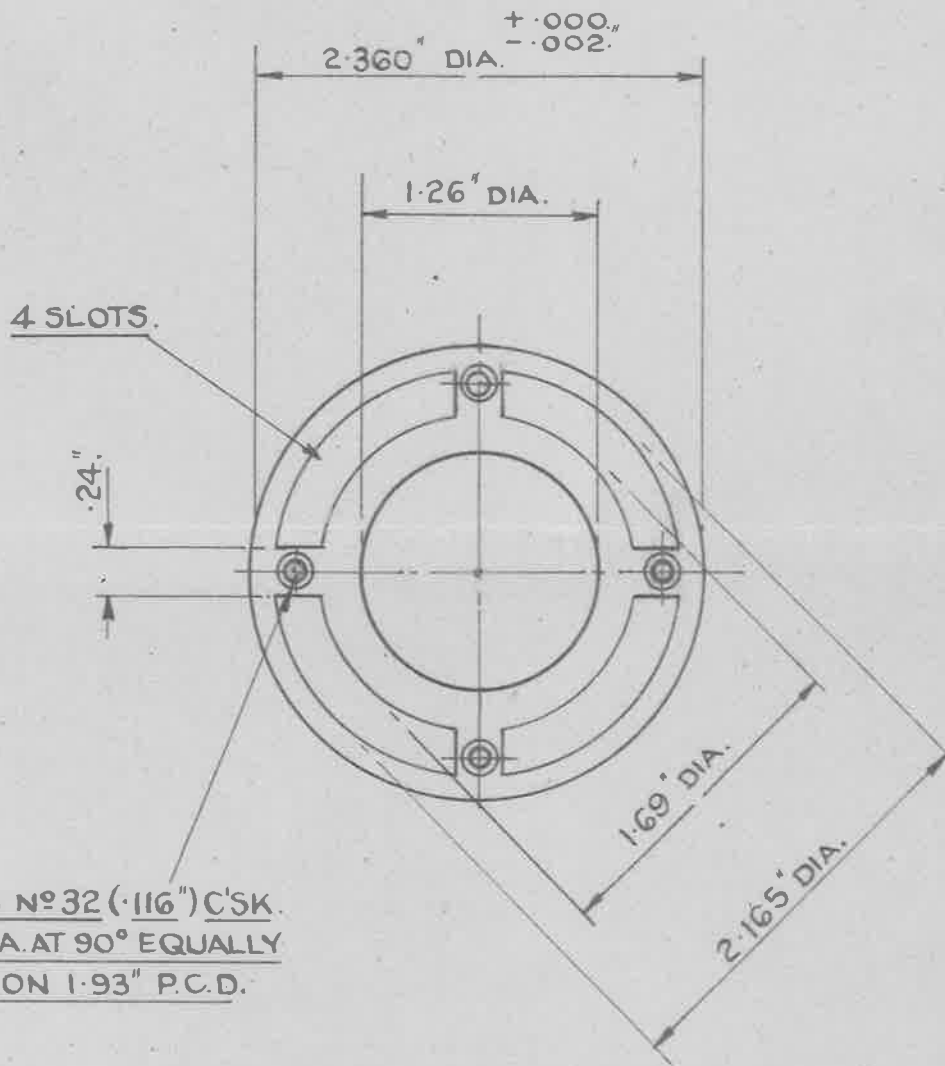
MATERIAL:- MILD STEEL TO B.S. SPEC. S.I. (LATEST ISSUE).

FINISH - TO BE CADMIUM PLATED TO SPEC. D.T.D 904
(LATEST ISSUE).

ALL DIMENSIONS UNLESS OTHERWISE STATED,
TO BE WITHIN $\pm .005$ '

SCALE :- FULL SIZE.

ISSUED BY ROYAL AIRCRAFT	TITLE:- 300 G.P.H. FUEL FILTER				DRAWN M.W SHIPPY.	RE-TRACED. F.LIVINGSTON. 23.7.48.
	ISSUE N ^o	1	2	3	CHECKED	APPROVED.
	ALTER ⁿ N ^o	MOD. NO.	A.S. N ^o	AS N ^o		



16 S.W.G. (.064") THICK.

Q TOP PLATE - FILTER PACK.

MATERIAL :- HARD ALUMINUM SHEET TO B.S. SPEC. L.4. (LATEST ISSUE).

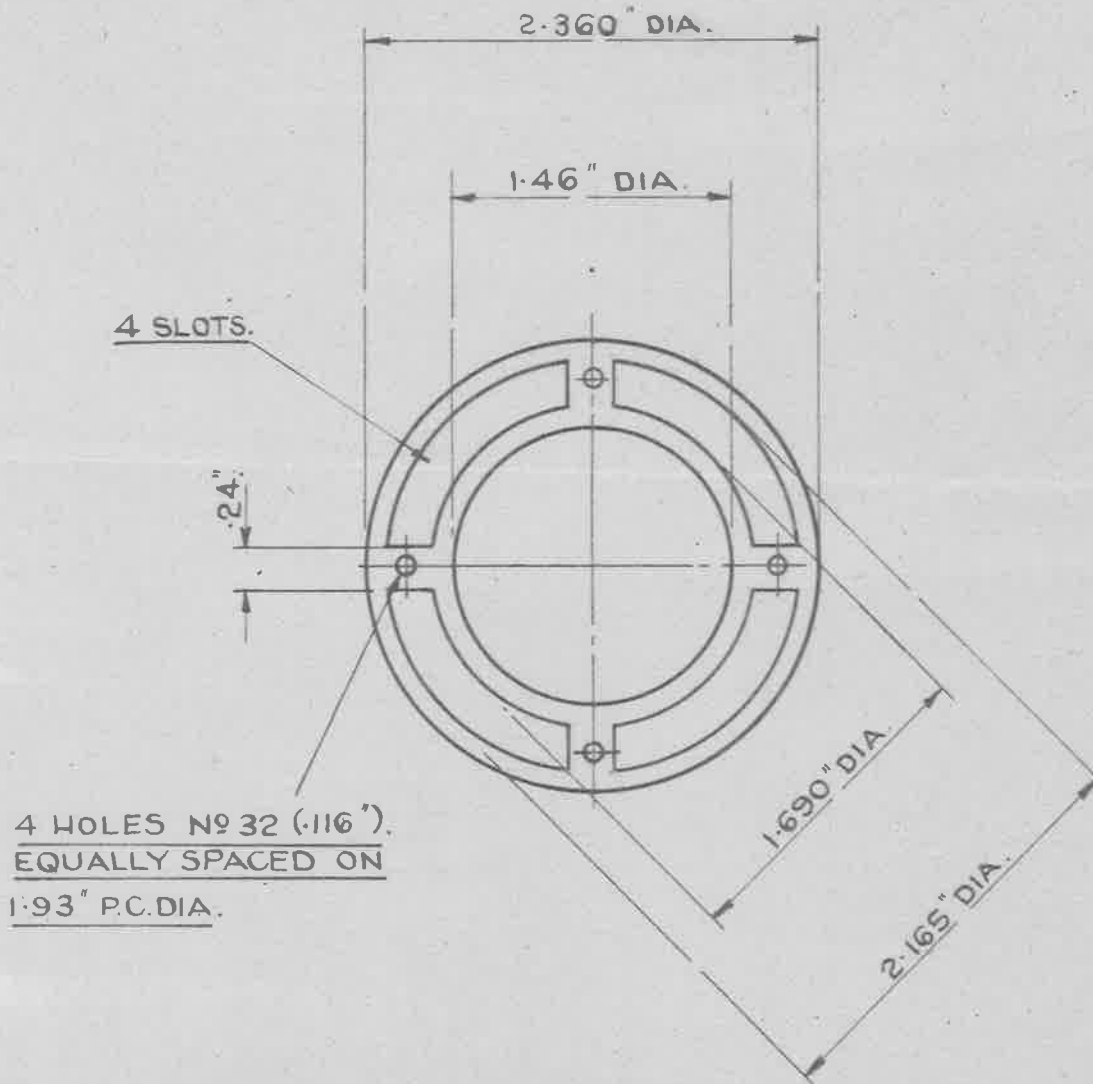
NOTE :- PUNCHED EDGES MUST BE CLEAN AND FREE FROM ALL TRACES OF BURRS.

FINISH :- ANODISED TO SPEC. D.T.D. 910 (LATEST ISSUE).

ALL DIMENSIONS UNLESS OTHERWISE STATED TO BE WITHIN $\pm .005$ ".

FULL SIZE.

ISSUED BY ROYAL AIRCRAFT ESTABLISHMENT MINISTRY OF	TITLE:- 300 G.P.H. FUEL FILTER					DRAWN. D.H.	RE-TRACED. F. LIVINGSTON. 23 7 48.
	ISSUE N°	1				CHECKED	APPROVED.



22 S.W.G. (.028") THICK.

(R) STABILISING RING-FILTER PACK.

MATERIAL: - HARD ALUMINIUM SHEET TO B.S. SPEC. L.4. (LATEST ISSUE).

NOTE: - PUNCHED EDGES MUST BE CLEAN AND FREE FROM ALL TRACES OF BURRS
FINISH: - ANODISED TO SPEC. D.T.D. 910 (LATEST ISSUE).

ALL DIMENSIONS, UNLESS OTHERWISE STATED TO BE WITHIN $\pm .005$.

SCALE: - FULL SIZE.

ISSUED BY THE
ROYAL AIRCRAFT
ESTABLISHMENT
MINISTRY OF

TITLE: -
300 G.P.H. FUEL FILTER

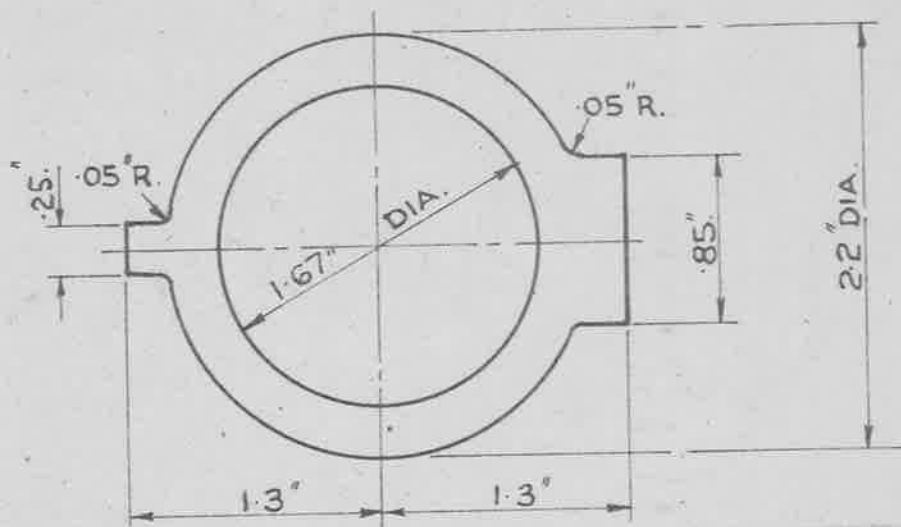
DRAWN
D. Hopkins.

RE-TRACED
F. LIVINGSTON
26.7.48.

ISSUE N^o | 1 | | | | |

CHECKED.

APPROVED.



MAKE FROM 18 S.W.G. SHEET (.048")

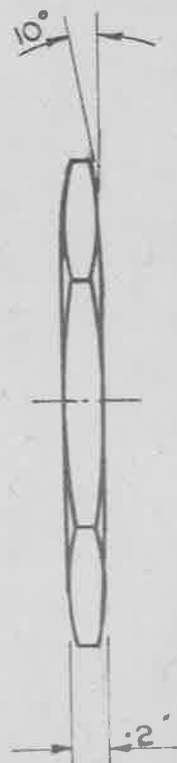
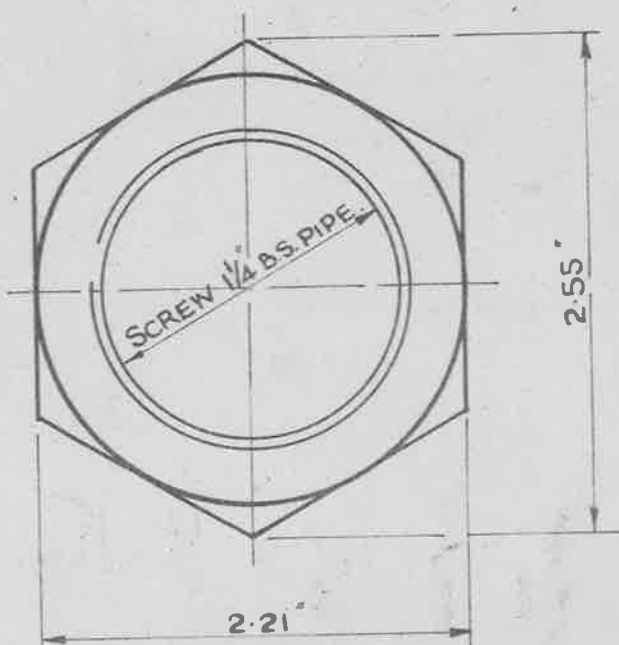
FINISH:- TO BE CADMIUM
PLATED TO SPEC: D.T.D. 904
(LATEST ISSUE)

(T) TAB WASHER.

MILD STEEL S.84. (LATEST ISSUE)

SCALE:- FULL SIZE.

SCREW THREADS TO BE IN ACCORDANCE WITH
B.S. SPEC. 84-1940 FOR B.S.P. MEDIUM FIT.



FINISH:- TO BE CADMIUM PLATED
TO SPEC: D.T.D. 904 (LATEST ISSUE)

MACHINE ALL OVER

SCALE:- FULL SIZE

M. STEEL S.I. (LATEST ISSUE)

(U) THIN NUT.

ISSUED BY THE
ROYAL
AIRCRAFT

TITLE:-
R.A.E. PETROL FILTER.

DRAWN.
D.H.

RE-TRACED.
F. LIVINGSTON.
27.7.48.

ISSUE No X 2

CHECKED

APPROVED.