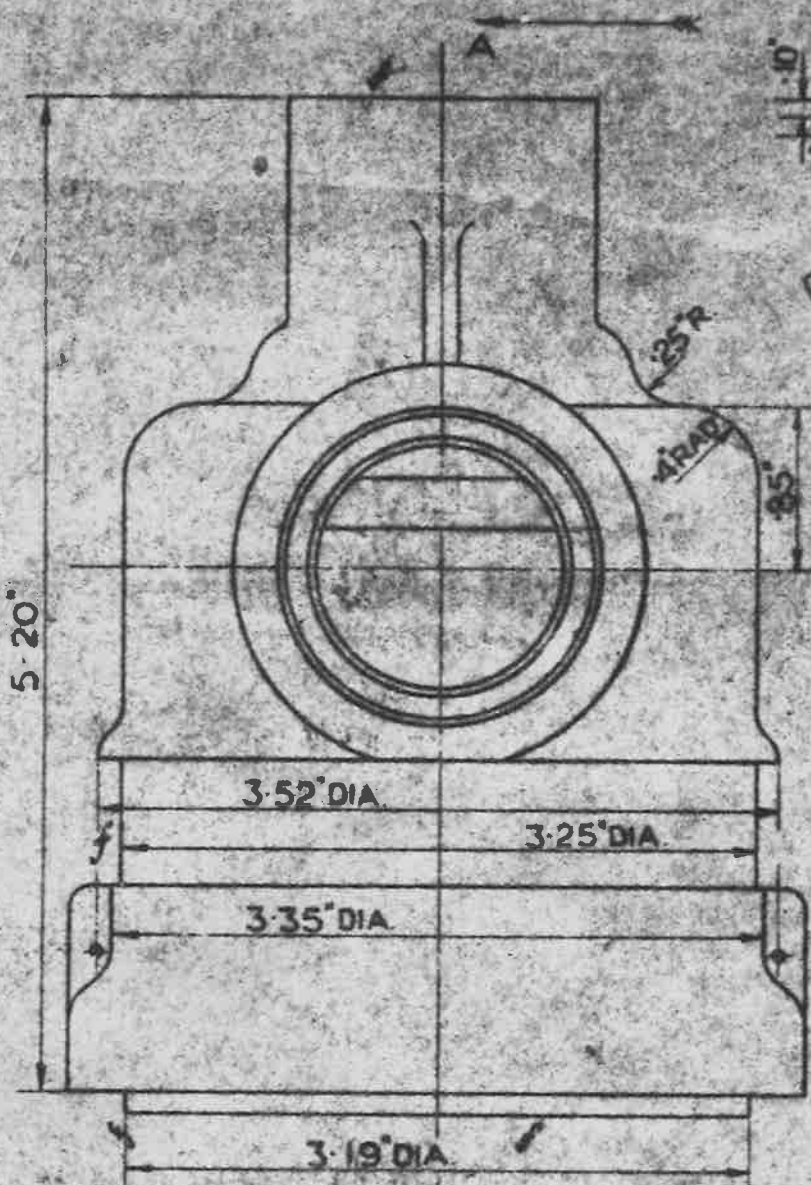


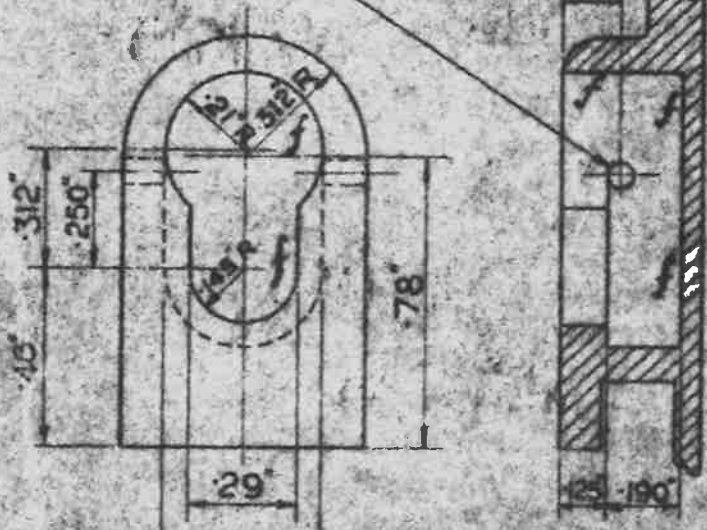
3.8.43



SCRAP VIEW LOOKING IN DIRECTION OF ARROW A SHOWING MARKINGS

MAT: ALUMINIUM ALLOY
SPEC: L33 (LATEST ISSUE)

DRILL HOLE N^o 52 DIA. DRILL FOR
1/8 DIA. SPLIT PIN THROUGH BOSS
EACH SIDE



ENLARGED DETAIL OF
SLOTS FOR FIXING
STIRRUPS

GENERAL LIMITS ± .005

... (faint text) ...
... (faint text) ...
... (faint text) ...

NOTE- MACHINE WHERE MARKED f.
SCREW THREADS TO BE TO B.S. SPEC:
N^o 84-1940
(LATEST ISSUE) MEDIUM FIT

FILTER HEAD
DOUBLE OUTLET ①

ISSUED BY THE ROYAL AIRCRAFT ESTABLISHMENT MINISTRY OF AIRCRAFT PRODUCTION.	TITLE- 300 G.P.H. FUEL FILTER				DRAWN M. J. ...	TRACED 31-10-42
	ISSUE N ^o	1			CHECKED M. J. ...	APPROVED [Signature]
	ALTERATION N ^o					21-12-42

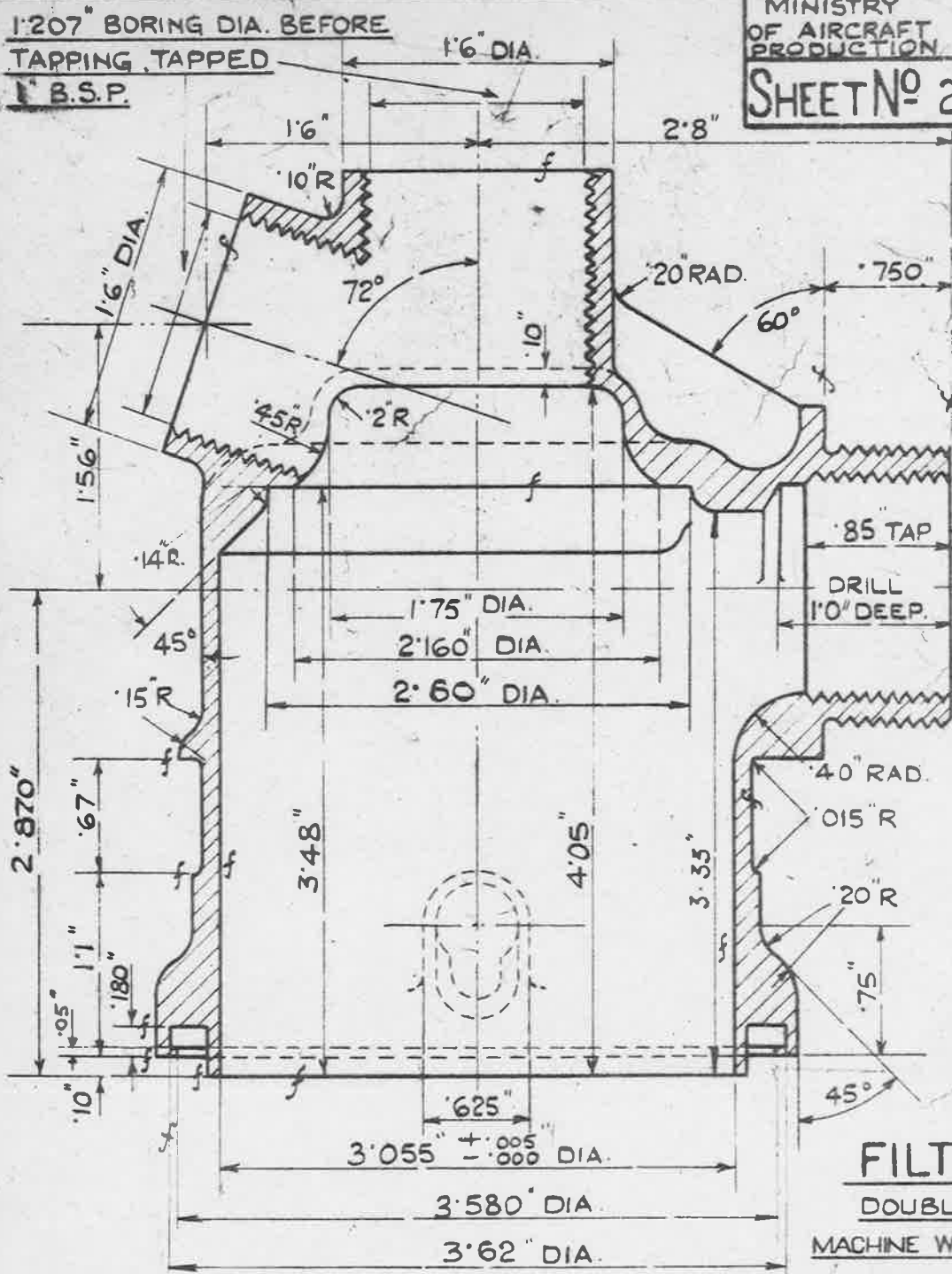
1.207" BORING DIA. BEFORE
TAPPING, TAPPED
1" B.S.P.

MINISTRY
OF AIRCRAFT
PRODUCTION

AGS. No 1009

SHEET No 2 No OF SHEETS 24

NOTE:-
SCREW THREADS TO BE
TO BS SPEC. No 84-1940
(LATEST ISSUE)
MEDIUM FIT.



1.207" BORING DIA.
BEFORE TAPPING
TAPPED 1" B.S.P.

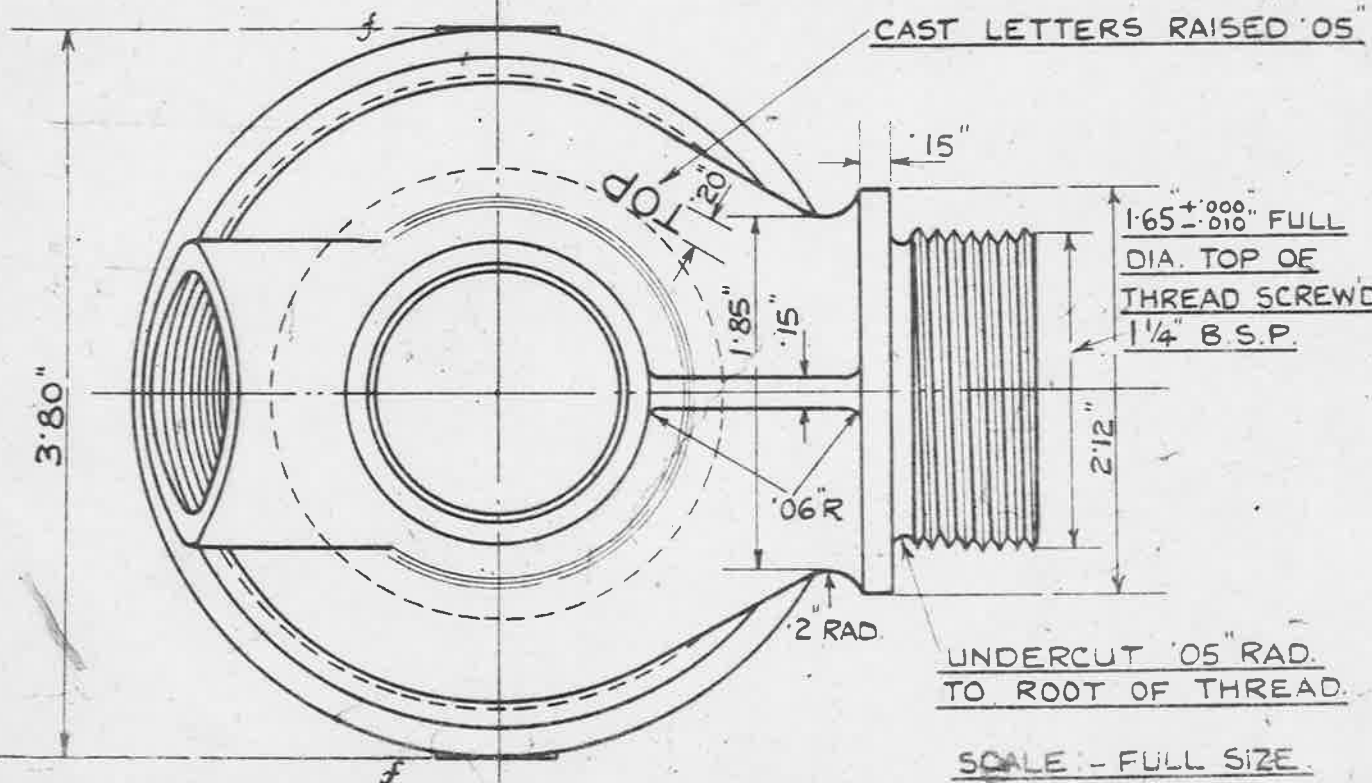
1

FILTER HEAD.

DOUBLE OUTLET.

MACHINE WHERE MARKED f

CAST LETTERS RAISED .05"



UNDERCUT .05" RAD.
TO ROOT OF THREAD.

SCALE - FULL SIZE.

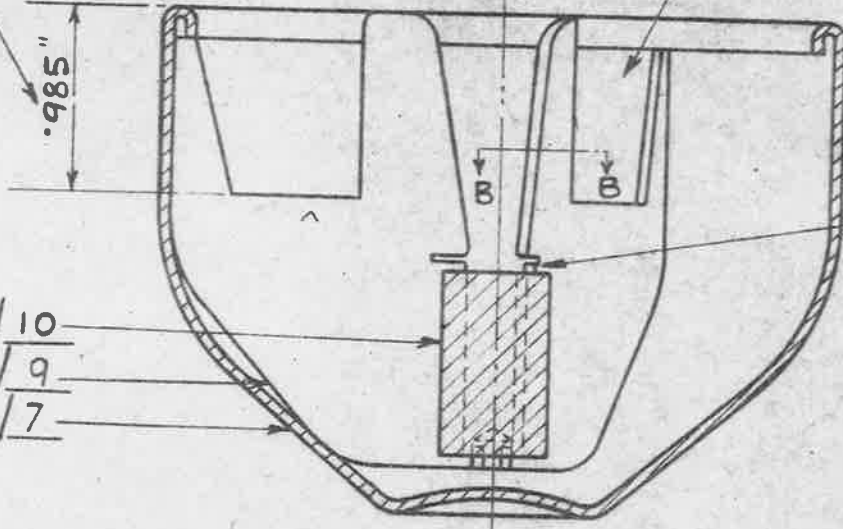
ISSUED BY THE ROYAL AIRCRAFT ESTABLISHMENT MINISTRY OF AIRCRAFT PRODUCTION	TITLE:- 300 G.P.H. FUEL FILTER			DRAWN. M. Johnson	TRACED 30.10.42
	ISSUE No X 2 3	ALTERS No	100 No MOD. No AGS/493 AGS/537 AGS/556	CHECKED J. Green	APPROVED 21.12.42

3-8-42
AGS/556

5.8.45.
REV. 15.60

NOTE :- IT IS IMPORTANT THAT THIS DIMENSION DOES NOT VARY MORE THAN .01" ON ANY OF THE THREE FINS.

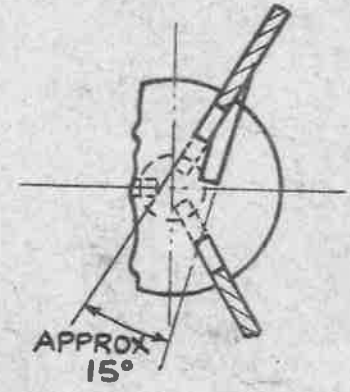
NOTE :- IT IS IMPORTANT THAT A PLUG GAUGE 3.210" DIA. SHOULD BE ABLE TO ENTER MOUTH OF BOWL TO A DEPTH OF .280"



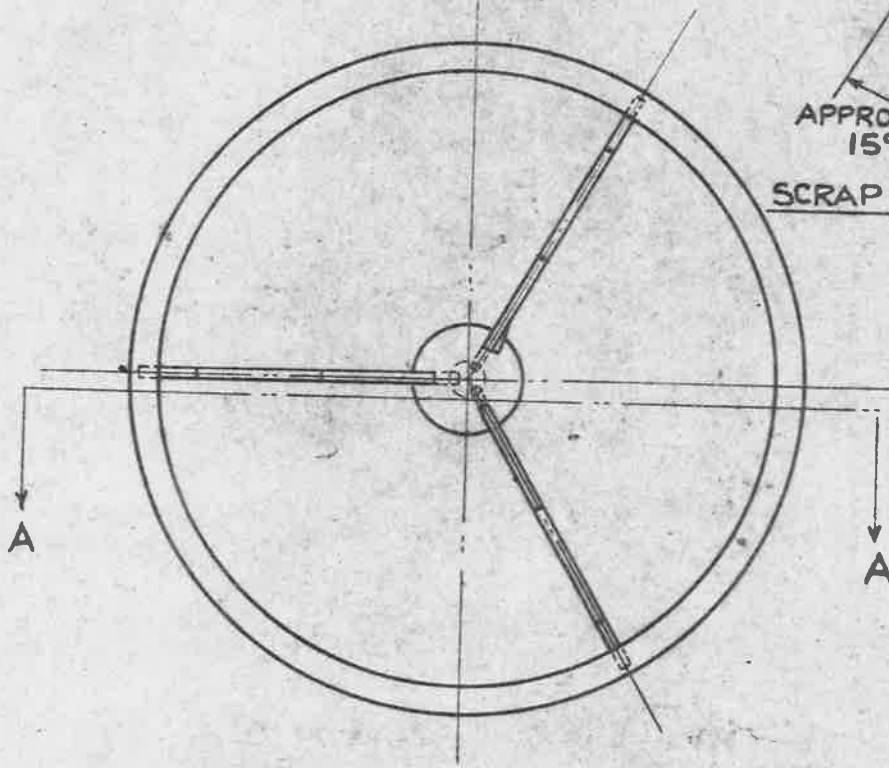
THIS PART TWISTED TO EXTENT OF 15° APPROX. ON ONE FIN ONLY.

AGS. 1009 / 10
AGS. 1009 / 9
AGS. 1009 / 7

SECTION A A.



SCRAP SECTION B B.

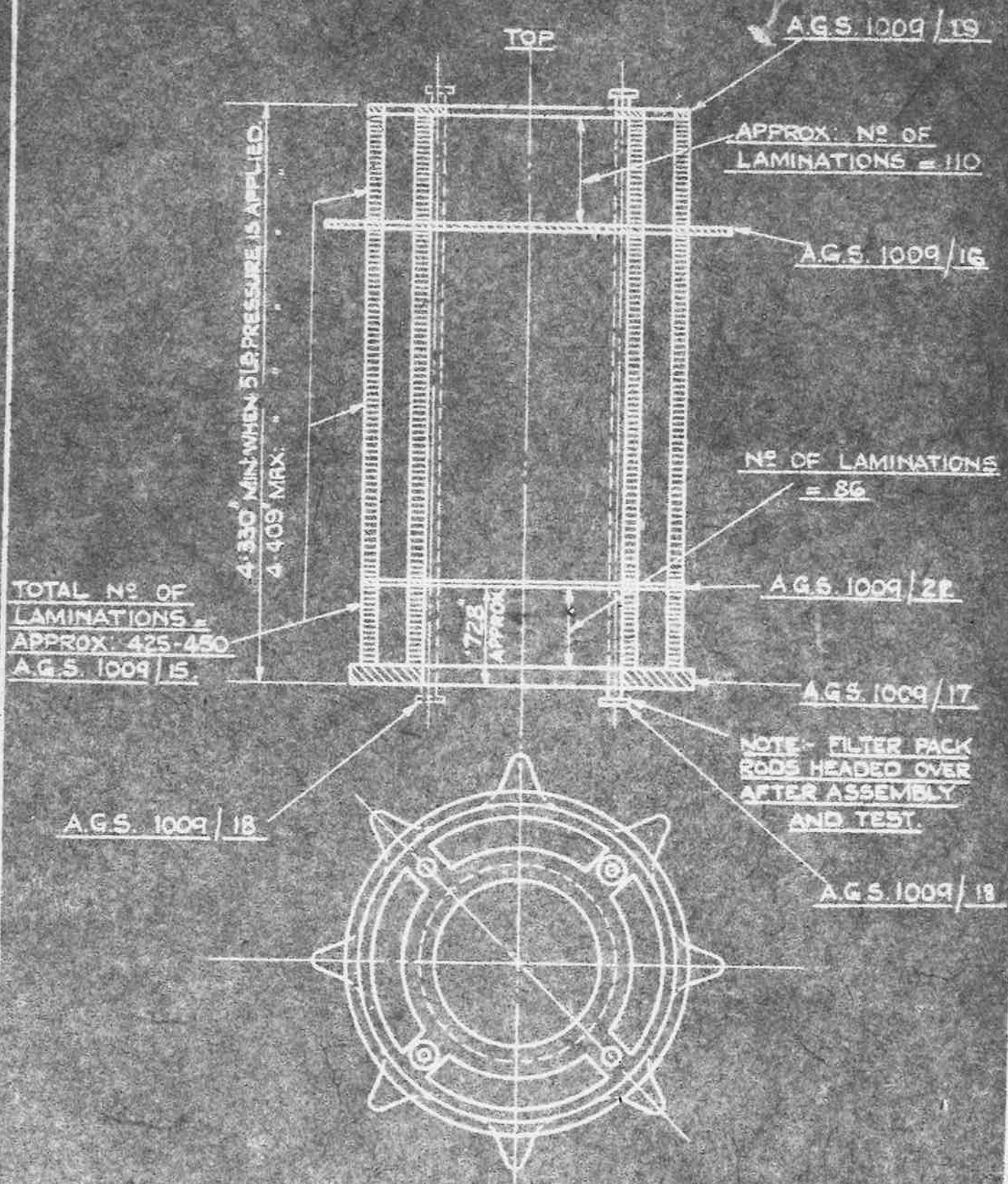


② FILTER SUMP ASSEMBLY.

SCALE FULL SIZE

ISSUED BY THE ROYAL AIRCRAFT ESTABLISHMENT MINISTRY OF AIRCRAFT PRODUCTION	TITLE:- 300 G.P.H. PETROL FILTER			DRAWN: J. DIMELOW	TRACED 28.10.42
	ISSUE N ^o	2	3	CHECKED 17 Gram	APPROVED. 21.12.42
	ALTER N ^o	Mod. No AGS/A83	Mod. No 1009/587	Mod. No AGS/555	

3-8-43
Rev. 1/13-60



3 FILTER PACK ASSEMBLY.

SCALE FULL SIZE.

ISSUED BY THE ROYAL AIRCRAFT ESTABLISHMENT MINISTRY OF AIRCRAFT PRODUCTION	TITLE - <u>300 G.P.H. FUEL FILTER</u>				DRAWN. J.DIMLOW	TRACED 3.11.42
	ISSUE NO	1			CHECKED 27/11/42	APPROVED 21.11.42
	ALTERS NO					

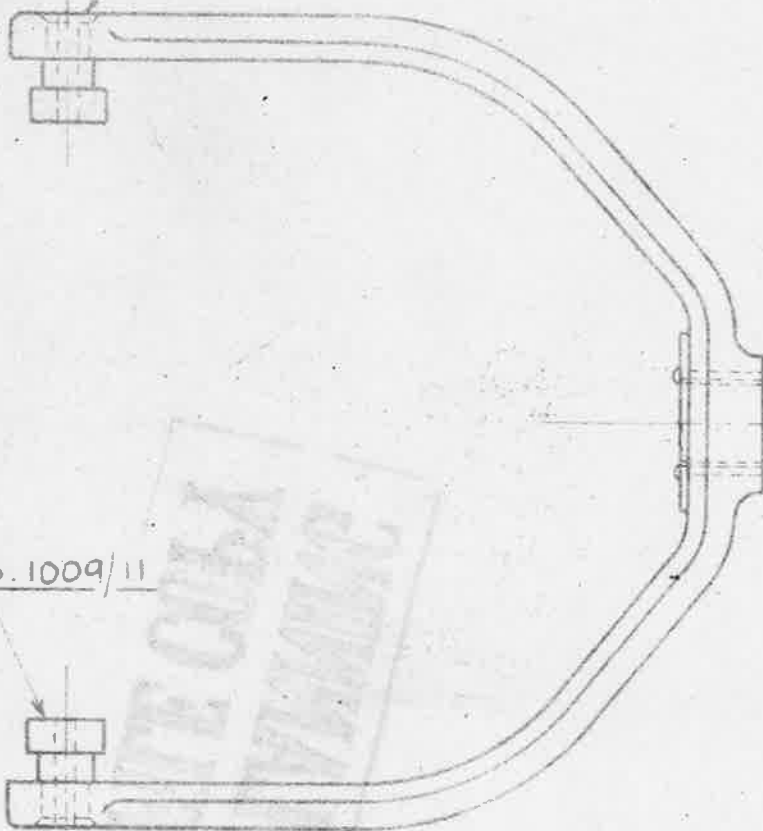
AGS 1009/6

AGS 1009/15

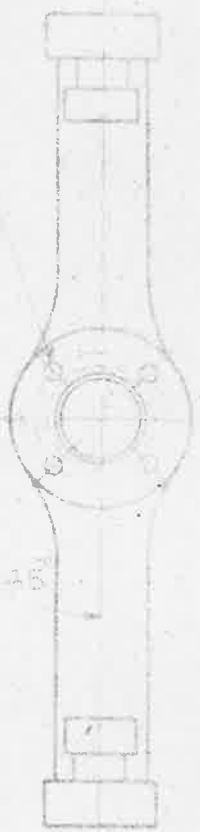


ENDS OF HINGE PINS RIVETED OVER FLUSH WITH STIRRUP

4 PARKER-KALON SCREWS TYPE U 3/16 X 00 EQUALLY SPACED ON 7/16 IN DIA



AGS. 1009/11



④ STIRRUP SUB ASSEMBLY.

SCALE - FULL SIZE

ISSUED BY THE ROYAL AIRCRAFT ESTABLISHMENT MINISTRY OF AIRCRAFT PRODUCTION

300 G.P.H. FUEL FILTER

DESIGNED BY R.S. STEWART DRAWN BY [Signature] CHECKED BY [Signature] DATE 23.10.42

FILE NO	X 6 2 4
MOD NO	
AGS 483	AGS 555

3-8-43
REV. AGS. 60

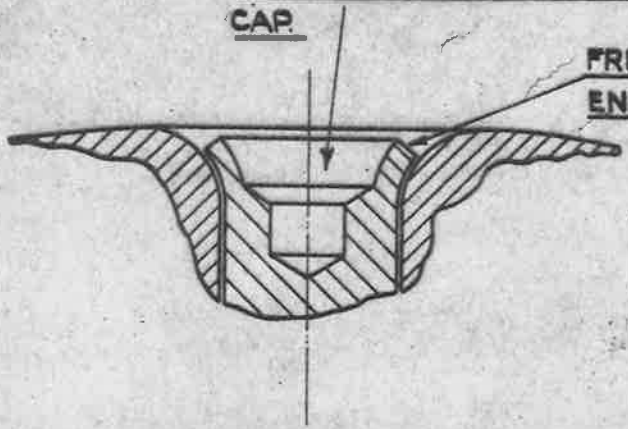
MINISTRY OF
AIRCRAFT
PRODUCTION

AGS. No 1009

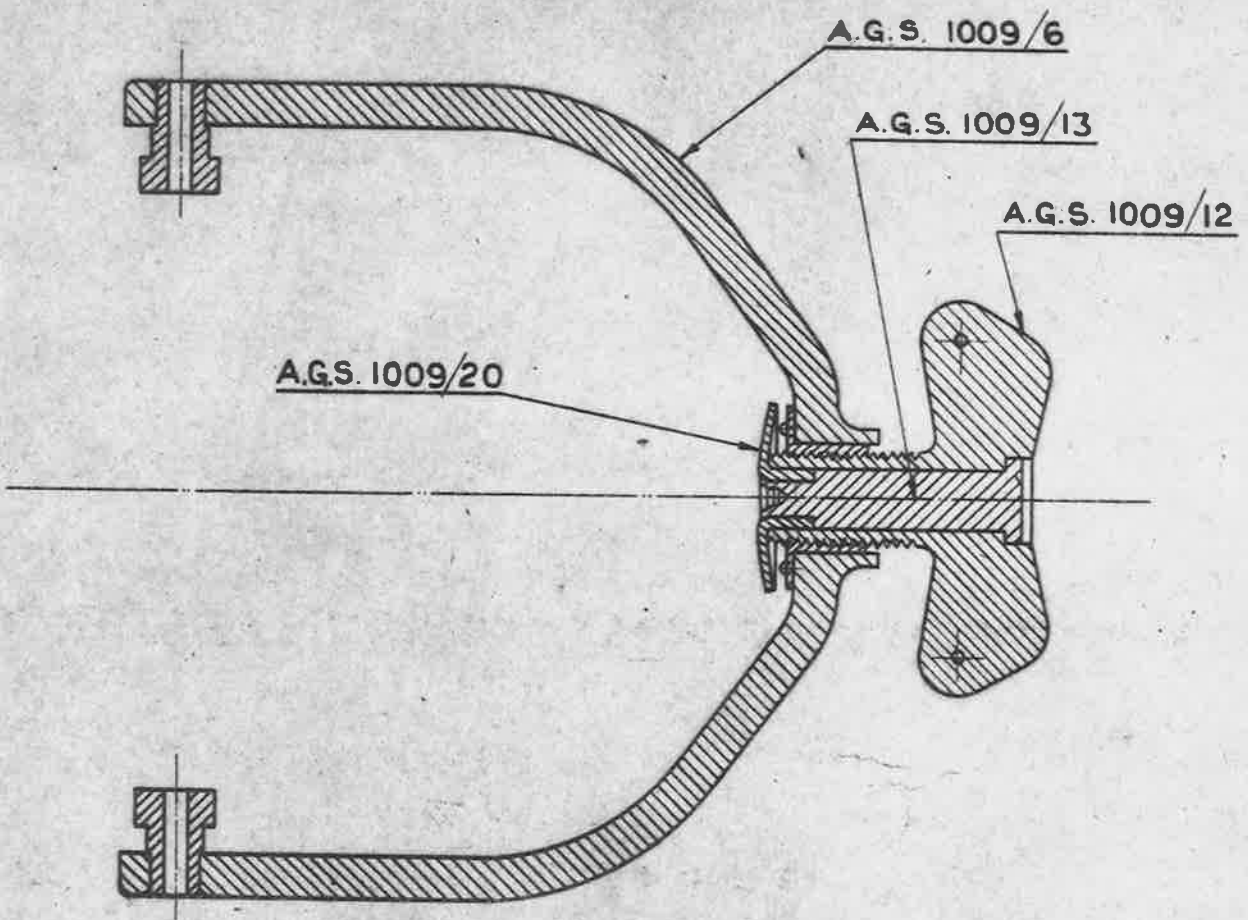
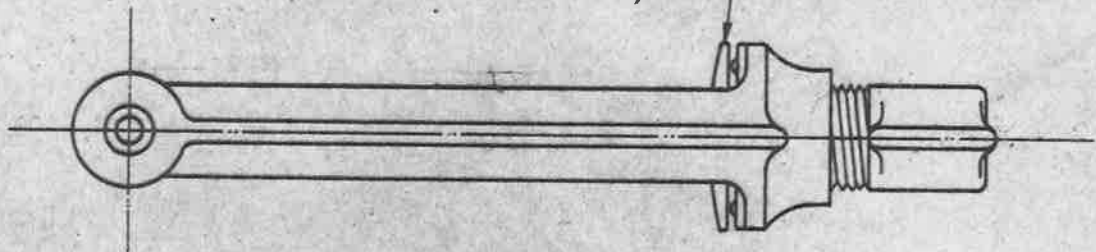
SHEET No 6. No OF SHEETS 24

NOTE 1- END OF CENTRE PIN SPUN OVER
ON ASSEMBLY AND MUST NOT
PROTRUDE BEYOND THE END
CAP.

FREE FIT AT TURNED
END .004" CLEARANCE.



END CAP TO ROTATE FREELY
AFTER ASSEMBLY



CLAMPING SCREW & STIRRUP
ASSEMBLY

ISSUED BY
THE ROYAL AIRCRAFT
ESTABLISHMENT.
MINISTRY OF
AIRCRAFT PRODUCTION

TITLE:-
300 G.P.H. FUEL FILTER.

DRAWN:
R. S. STOWART.

TRACED
M. M. Hedrick
31-10-42

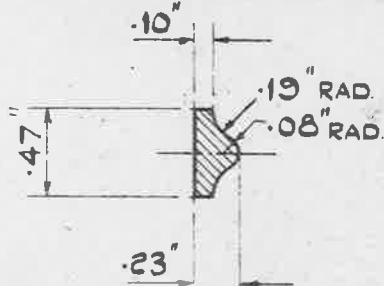
ISSUE No X 2

ALTERY No

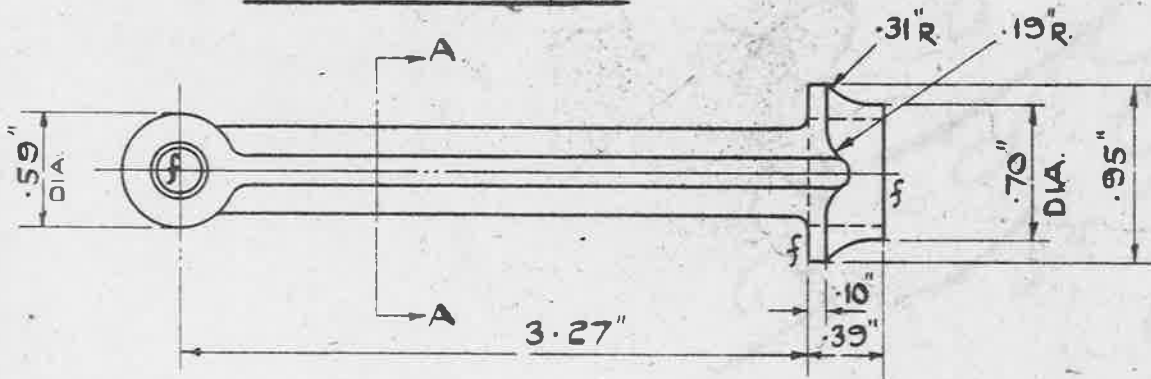
CHECKED
W. S. Green

APPROVED.
[Signature]
21-12-42

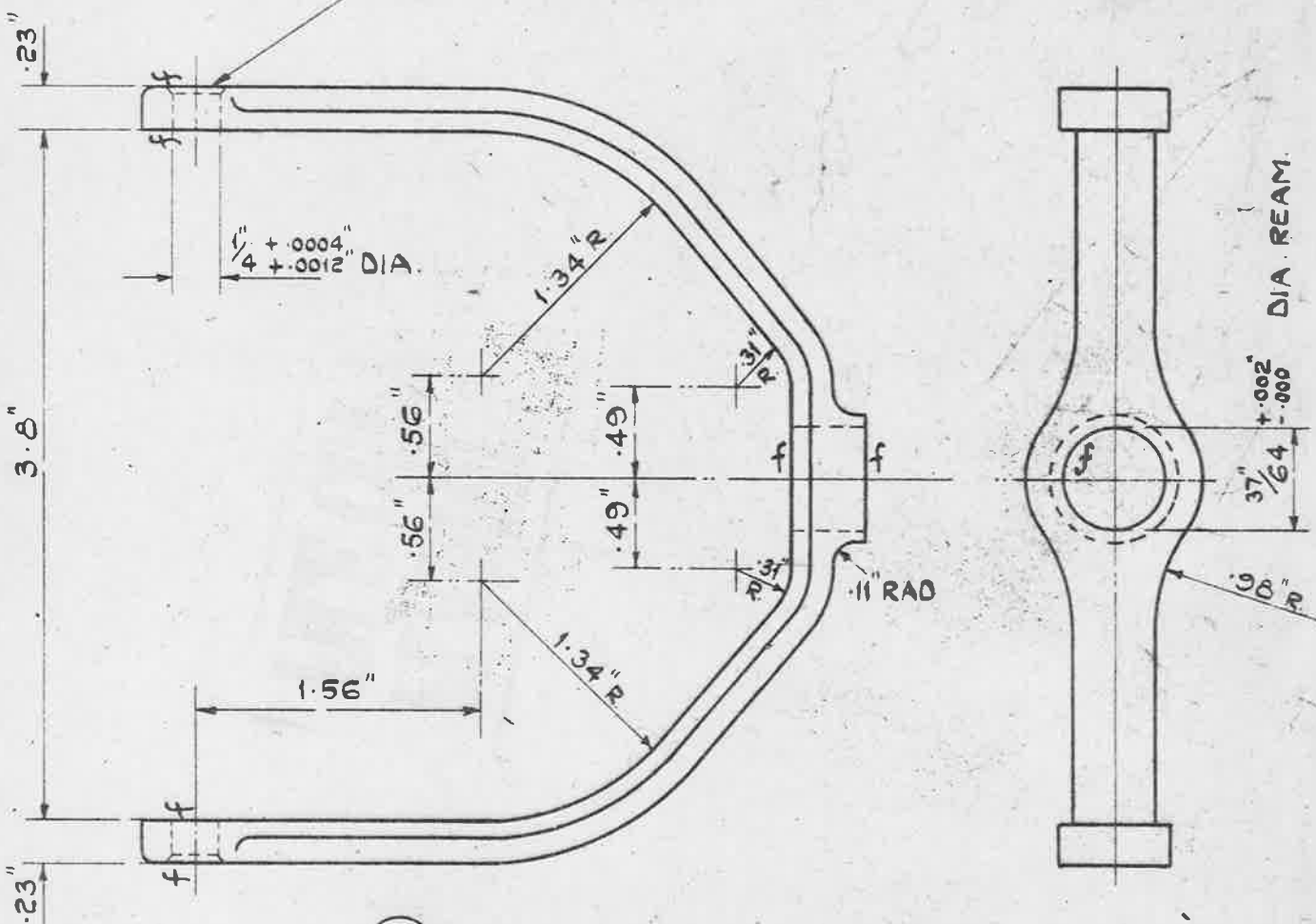
001 5-8-42
 50 60 100 150 200 250 300 350 400 450 500 550 600 650 700 750 800 850 900 950 1000



SCRAP SECTION A.A.



CHAMFER .04" X 45°



⑥ STIRRUP - FILTER SUMP.

DIMENSIONS IN INCHES.

MATERIAL: - ALUMINIUM ALLOY FORGING.
TO B.S. SPEC. L.40. (LATEST ISSUE)

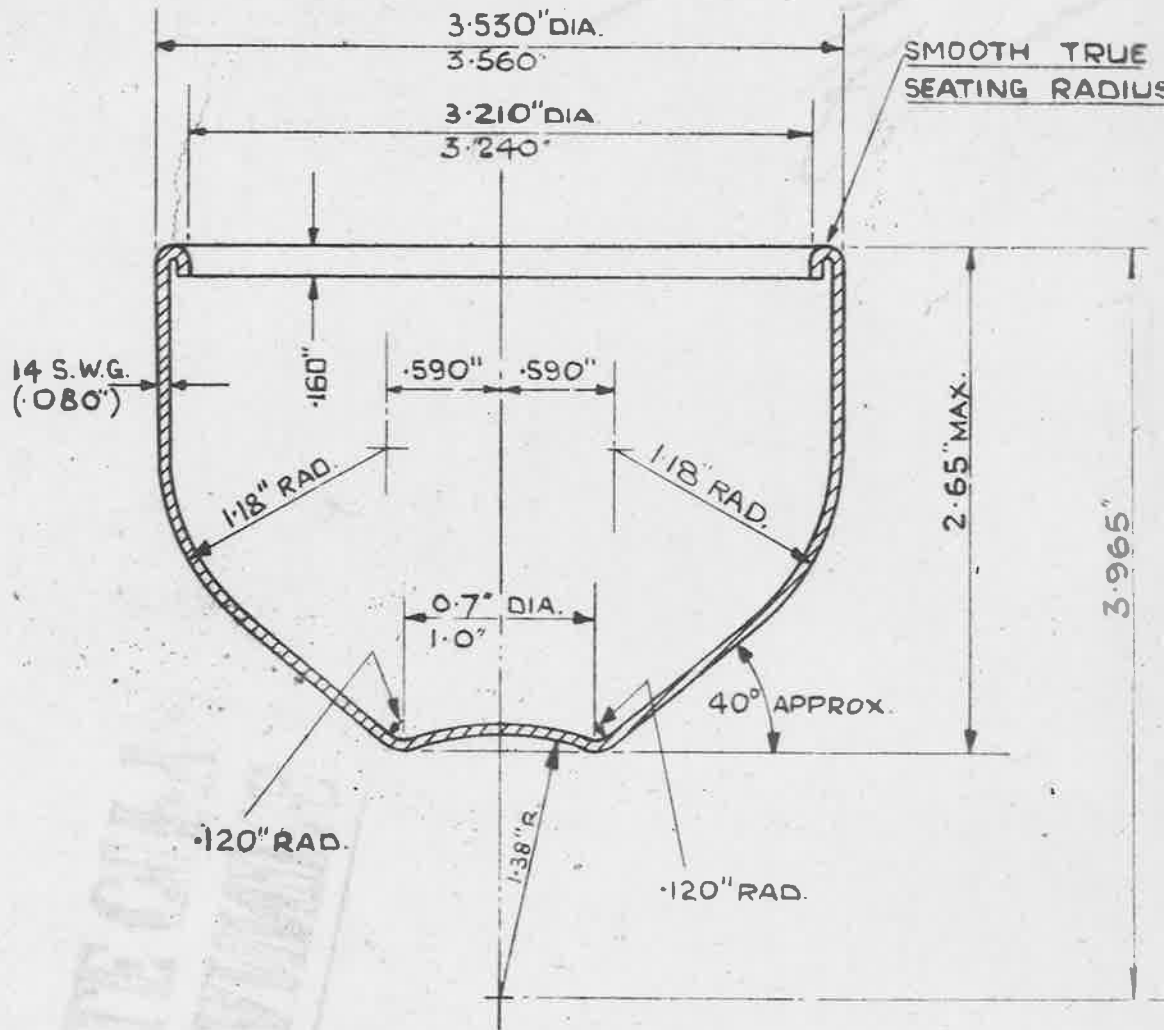
MACHINE TO f MARKS

GENERAL MACHINING LIMITS ± .005"

SCALE: - FULL SIZE.

ISSUED BY THE ROYAL AIRCRAFT ESTABLISHMENT MINISTRY OF AIRCRAFT PRODUCTION.	TITLE:- 300 G.P.H. FUEL FILTER			DRAWN R.S. STEWART.	TRACED m.p. 2 29.10.42
	ISSUE NO	Y-2		CHECKED H. Green	APPROVED [Signature]
	ALTERATION N°	MOD. N° AGS/483	MOD. N° AGS/555		21.12.42

3-8-43
Rev. AGS. 60



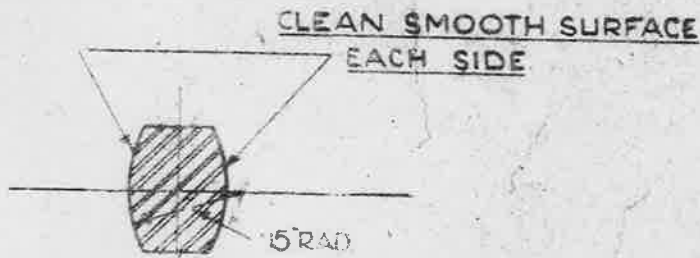
⑦ FILTER SUMP.

MATERIAL:- ALUMINIUM SHEET
TO B.S.SPEC. L16 (LATEST ISSUE)

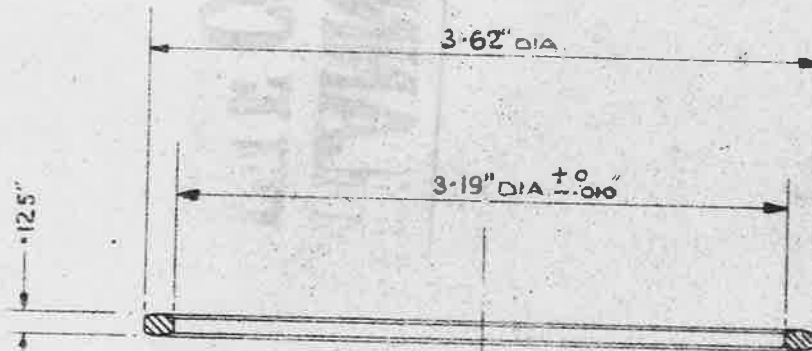
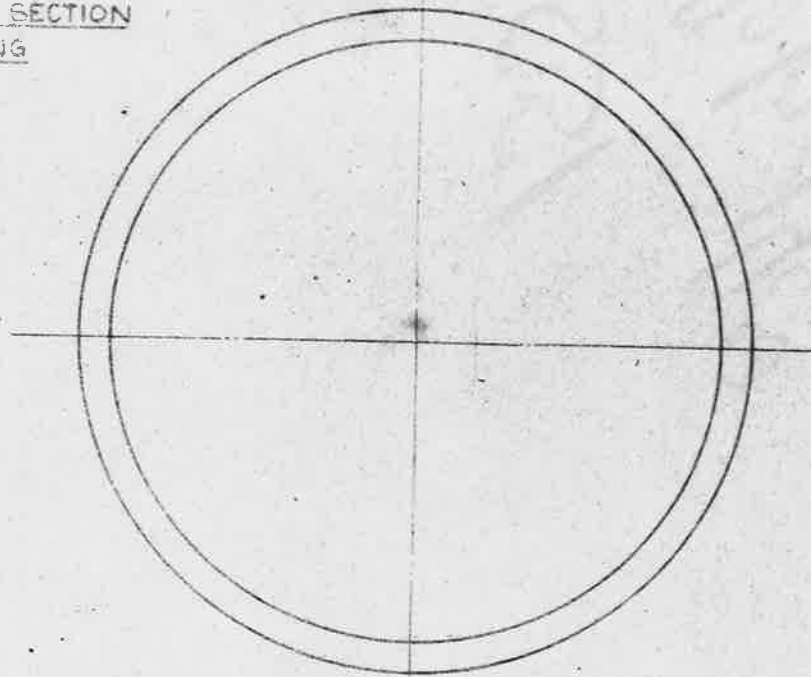
SCALE:- FULL SIZE.

LIMITS TO BE ± .005" UNLESS OTHERWISE STATED.

ISSUED BY THE ROYAL AIRCRAFT ESTABLISHMENT MINISTRY OF AIRCRAFT PRODUCTION	TITLE:- 300 G.P.H. FUEL FILTER.			DRAWN J. DIMELOW	TRAC RVC: 26-10
	ISSUE No	X-2		CHECKED H. Green	APPROV [Signature]
	ALTER No	MOD No	MOD No		21-12 +2



ENLARGED SECTION OF RING



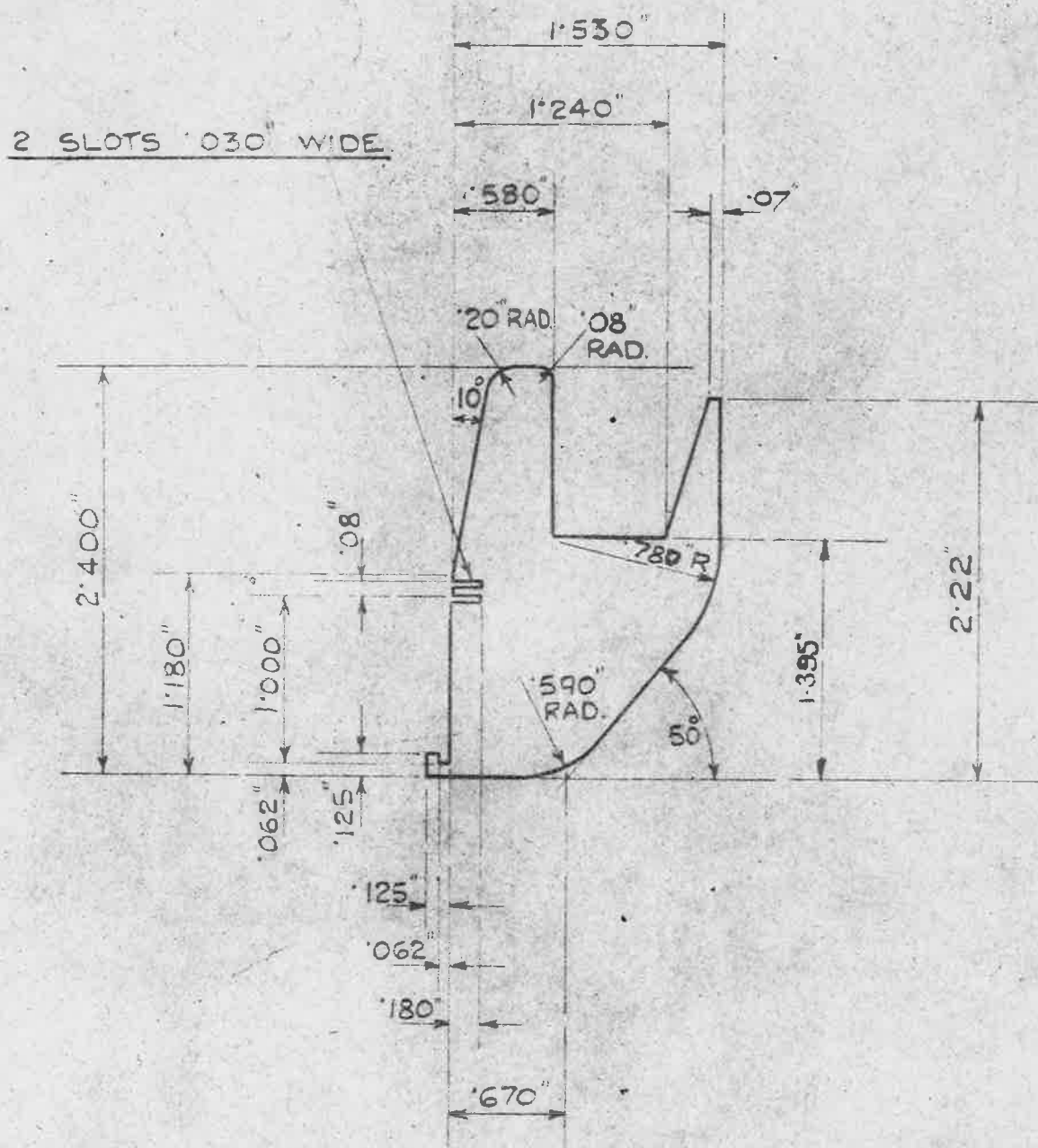
⑧ FILTER SUMP JOINT RING

MATERIAL :- HALLPRENE No 2
 SYNTHETIC RUBBER MOULDED.
 MAT. SPEC :- SHORE HARDNESS 40/45.

SCALE :- FULL SIZE.

ISSUED BY THE ROYAL AIRCRAFT ESTABLISHMENT MINISTRY OF AIRCRAFT PRODUCTION	TITLE:- 300 G.P.H. FUEL FILTER.				DRAWN J. DIMELow	TRACED R.V.C: 26.10.42
	ISSUE No	X	2		CHECKED <i>[Signature]</i>	APPROVED <i>[Signature]</i>
	ALTERN No	Mod No AGS/483	MOD No AGS/555			21.12.42

3-8-45
152.173.60



THICKNESS 20 S.W.G. (.036")

⑨ FIN FOR FILTER SUMP.

MATERIAL - MILD STEEL SHEET TO B.S.SPEC: 53 (LATEST ISSUE)
FINISH - ZINC OR CADMIUM PLATED TO SPEC D.T.D. 903 OR 904 (LATEST ISSUE)
 OR ALUMINIUM TO SPEC D.T.D. 346. (LATEST ISSUE).

LIMITS TO BE ± .005" UNLESS OTHERWISE STATED.

ISSUED BY THE
 ROYAL AIRCRAFT
 ESTABLISHMENT
 MINISTRY OF
 AIRCRAFT PRODUCTION

TITLE:- PETROL FILTER
 300 G.P.H.

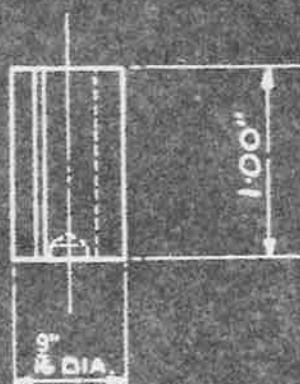
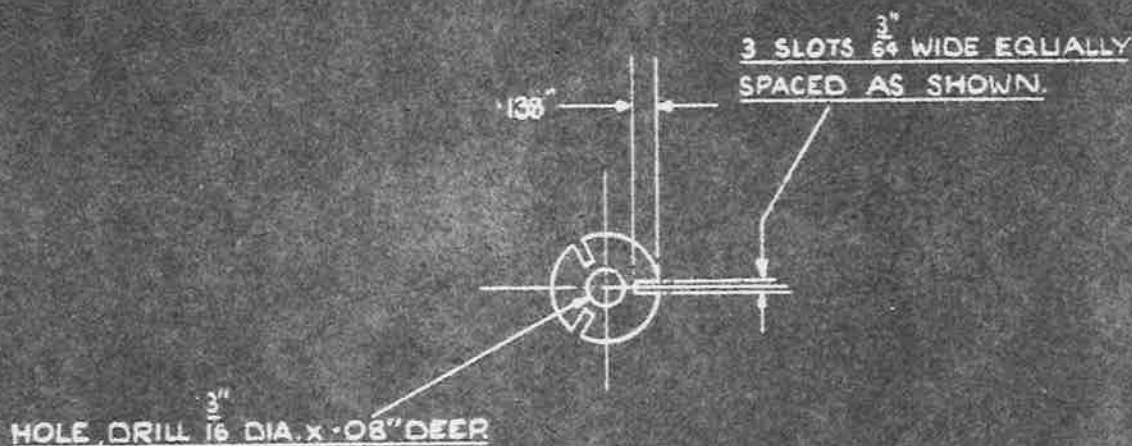
ISSUE No	1	2	3
ALTER No			
MOD No	AGS 483	AGS 537	AGS 555

DRAWN.
 J. DIMELOW

CHECKED
 R. Green

TRACED
 24.11.42

APPROVED.
 21.12.42



10 FIN CENTRE-FILTER SUMP.

MATERIAL:- ALUMINIUM ALLOY BAR TO
B.S. SPEC. L.44. (LATEST ISSUE)

MACHINE FROM $\frac{9}{16}$ " DIA. BAR

GENERAL MACHINING LIMITS $\pm .005$ "

SCALE:- FULL SIZE.

ISSUED BY THE
ROYAL AIRCRAFT
ESTABLISHMENT
MINISTRY OF
AIRCRAFT PRODUCTION

TITLE:- 300 G.P.H. FUEL
FILTER.

ISSUE No

1/2

ALTERS No

MFG No
AGA/433

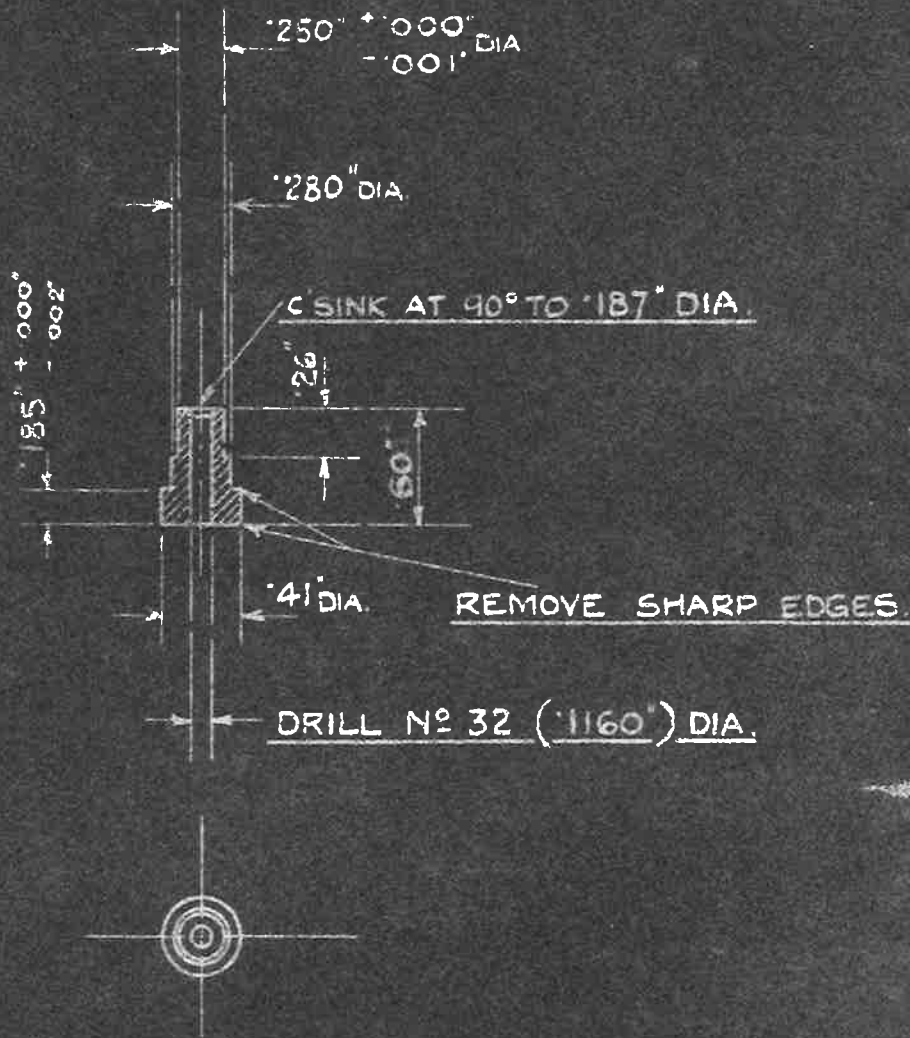
DRAWN
J DIMELOW

TRACED
R.V.C.26-10-42

CHECKED
M Green

APPROVED.

21.12.42



II HINGE PIN-FILTER STIRRUP.

MACHINE ALL OVER.

MATERIAL :- MILD STEEL TO B.S SPEC SI (LATEST ISSUE)

FINISH :- ZINC OR CADMIUM PLATED TO SPEC. D.T.D. 903 OR 904 (LATEST ISSUE)

GENERAL MACHINING LIMITS $\pm .005''$

SCALE FULL SIZE

ISSUED BY THE ROYAL AIRCRAFT ESTABLISHMENT MINISTRY OF AIRCRAFT PRODUCTION	TITLE:- 300 G PH. FUEL FILTER				DRAWN. J. DIMELLOW	TRACED 24.11.47
	ISSUE No	ALTERS No	AGS No		CHECKED <i>W. Green</i>	APPROVED <i>W. Green</i>
						21.12.47

.06" WIDE UNDERCUT
TO ROOT OF THREAD.

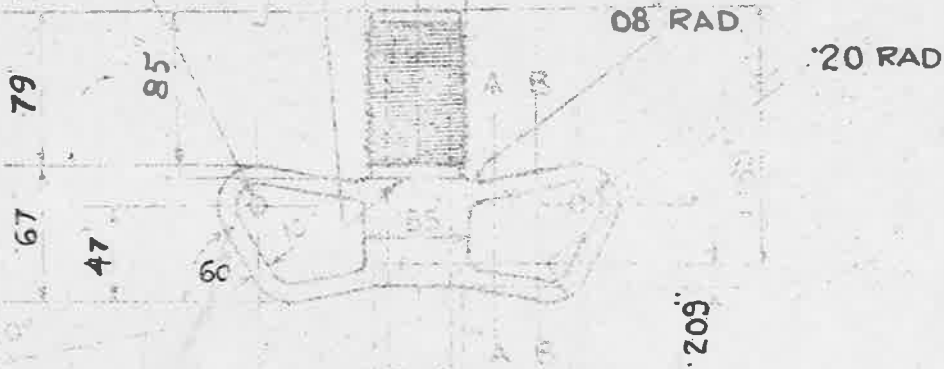
MINISTRY
OF AIRCRAFT
PRODUCTION

AGS/NP/1005

SHEET NO 13 / NO OF SHEETS 22

DRILL NO 46 '0819

518
1/8 BSP



441 ± .002

5 + .002
16 - .000

NOTE: ALL DIMENSIONS TO BE TAKEN TO THE CENTER OF THE

TO B.S. SPEC. NO 84-1953

LATEST ISSUE

.85 .85



2.05"

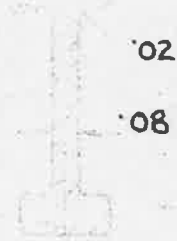
.035



SECTION SHOWING TOP OF
THREAD 10 TIMES FULL SIZE



SECTION
AA



SECTION
BB

12

CLAMPING SCREW-FILTER STIRRUP

MACHINE TO MARKS

MATERIAL - CARBON STEEL NORMALISED TO B.S. SPEC. S6 (LATEST ISSUE)

FINISH - ZINC OR CADMIUM PLATED TO SPEC. DTD. 903 OR 904 (LATEST ISSUE)

GENERAL MACHINING LIMITS ± .005"

SCALE - FULL SIZE

ISSUED BY THE
ROYAL AIRCRAFT
ESTABLISHMENT
MINISTRY OF
AIRCRAFT PRODUCTION

TITLE - 300 G.P.H. FUEL FILTER

DRAWN
R. S. STEWART

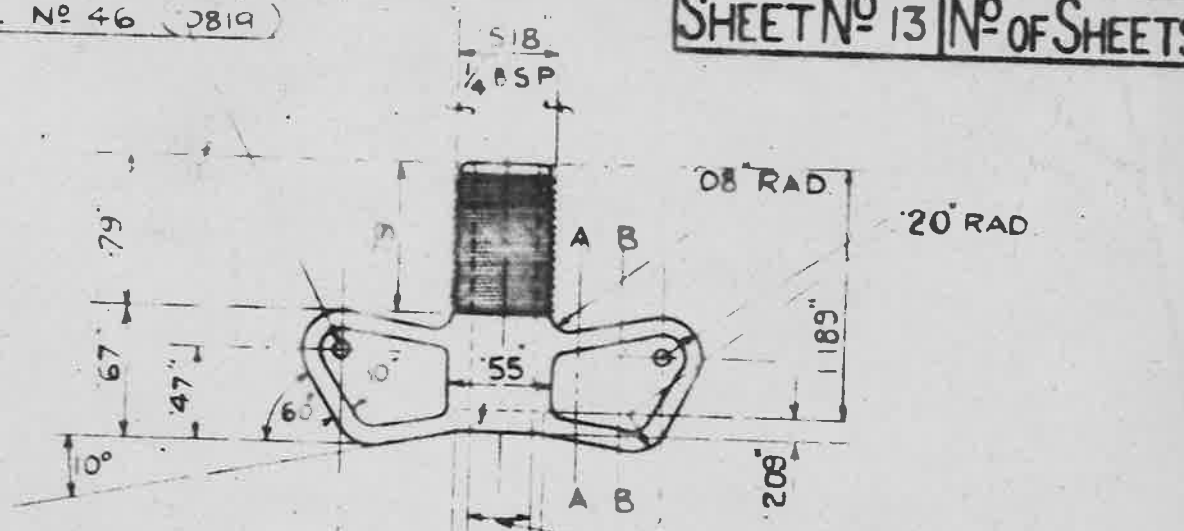
TRACED
26.10.42

ISSUE NO	X 2		
ALTERS NO			
MOD. NO			
MOD. NO			

CHECKED
R. Stewart

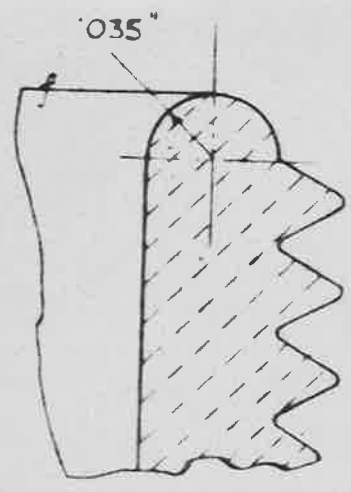
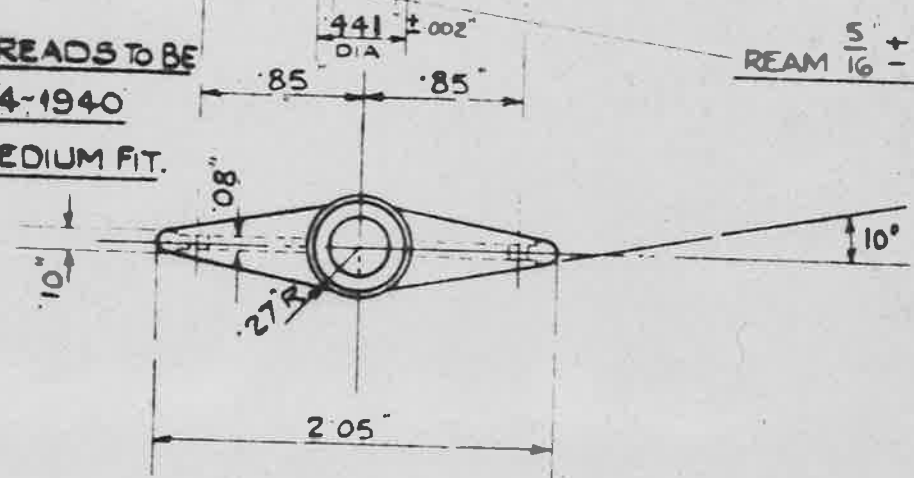
APPROVED
R. Stewart

DRILL No 46 (3819)

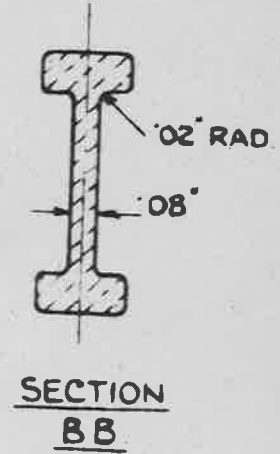
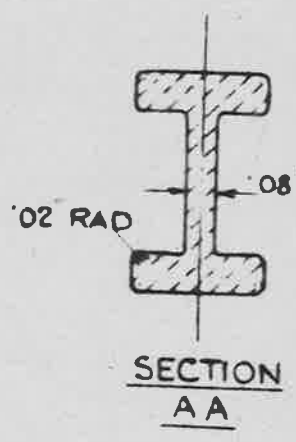


NOTE - SCREW THREADS TO BE TO B.S. SPEC No 84-1940 (LATEST ISSUE) MEDIUM FIT.

REAM $\frac{5}{16} + .002$ DIA



SECTION SHOWING TOP OF THREAD 10 TIMES FULL SIZE



12 CLAMPING SCREW-FILTER STIRRUP.

MACHINE TO f MARKS

MATERIAL - CARBON STEEL NORMALISED TO B.S. SPEC 8.6. (LATEST ISSUE)

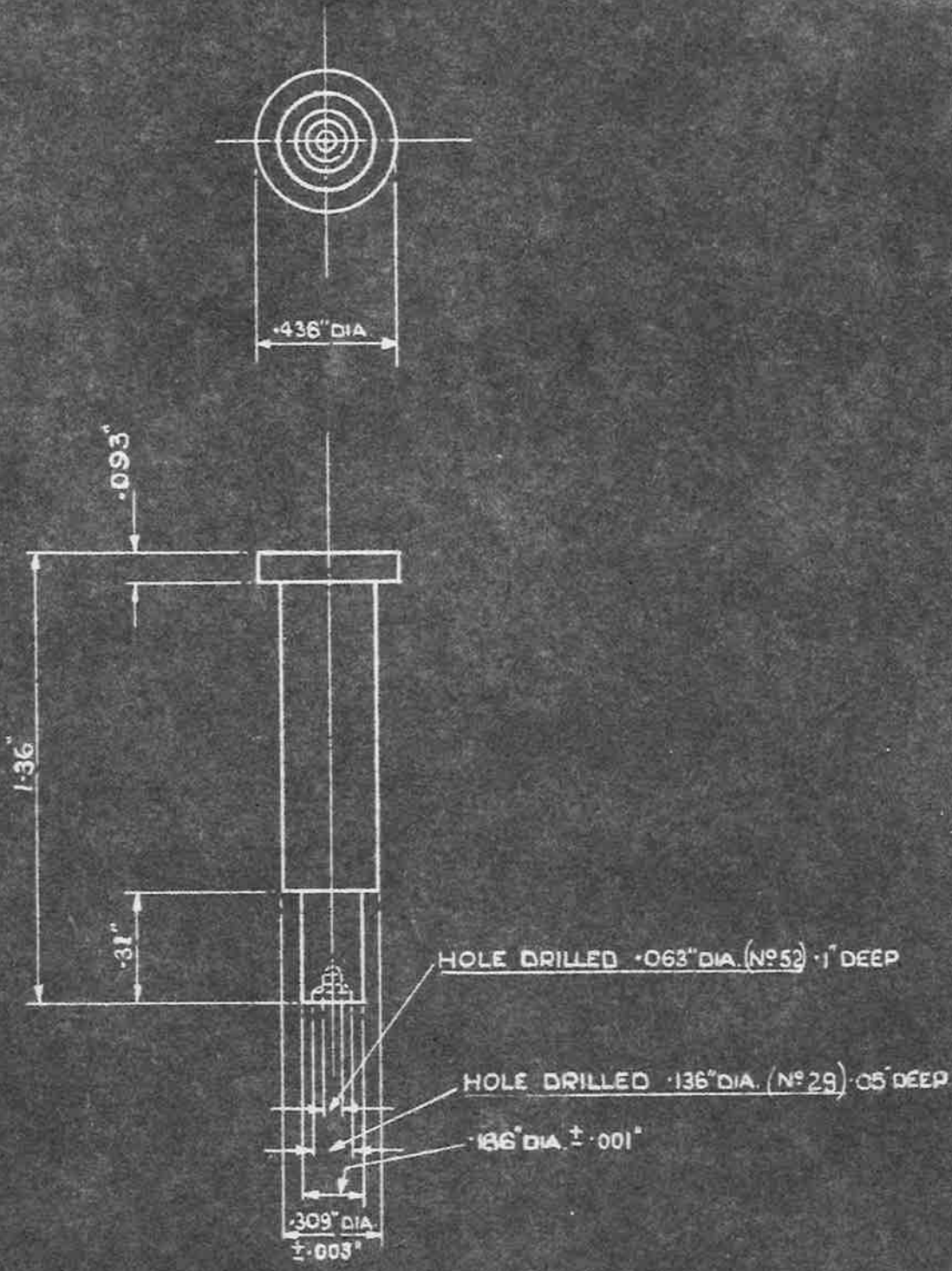
FINISH - ZINC OR CADMIUM PLATED TO SPEC. D.T.D. 903 OR 904 (LATEST ISSUE)

GENERAL MACHINING LIMITS ± .005"

SCALE - FULL SIZE

ISSUED BY THE ROYAL AIRCRAFT ESTABLISHMENT MINISTRY OF AIRCRAFT PRODUCTION	TITLE:- 300 G.P.H. FUEL FILTER				DRAWN. R.S. STEWART	TRACED 26.10.42
	ISSUE No 1/1	ALTERS No	MOD. No AGS/483		CHECKED H. Green	APPROVED 10

3-8-43
R.S. STEWART



(13) CENTRE PIN (CLAMPING SCREW)

MATERIAL: MILD STEEL TO BS SPEC 51. (LATEST ISSUE)

FINISH: ZINC OR CADMIUM PLATED TO SPEC D.T.D. 903 OR 904 (LATEST ISSUE)

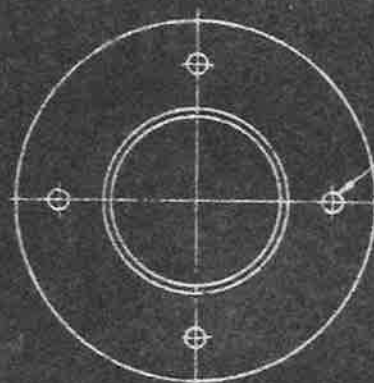
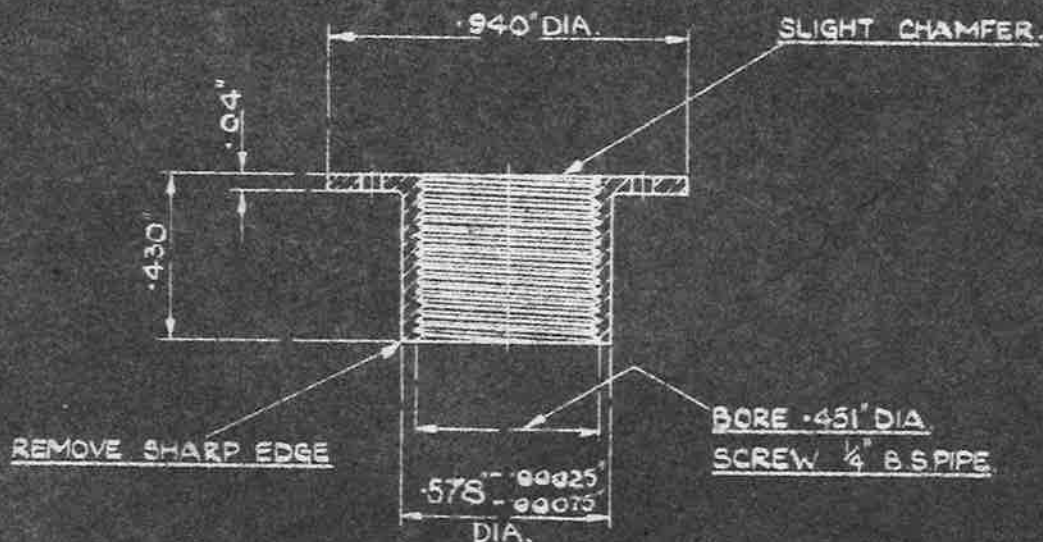
GENERAL MACHINING LIMITS ± .005"

MACHINE ALL OVER

SCALE: TWICE FULL SIZE

ISSUED BY THE ROYAL AIRCRAFT ESTABLISHMENT MINISTRY OF AIRCRAFT PRODUCTION	TITLE:— 300 G.P.H. FUEL FILTER			DRAWN. R.S. STEWART.	TRACED R.C. 31-10-42
	ISSUE No	ALTER# No		CHECKED <i>R.S. Stewart</i>	APPROVED <i>R.C. 31-10-42</i>

3-8-42
B. S. 1009



⑭ SCREWED BUSH — FILTER STIRRUP.

MACHINE ALL OVER.

MATERIAL :- MILD STEEL TO B.S. SPEC. S1.

(LATEST ISSUE)

FINISH - ZINC OR CADMIUM PLATED TO SPEC.

DTD. 903 OR 904. (LATEST ISSUE)

NOTE:- SCREW THREADS TO BE TO

B.S. SPEC. No 84 - 1940.

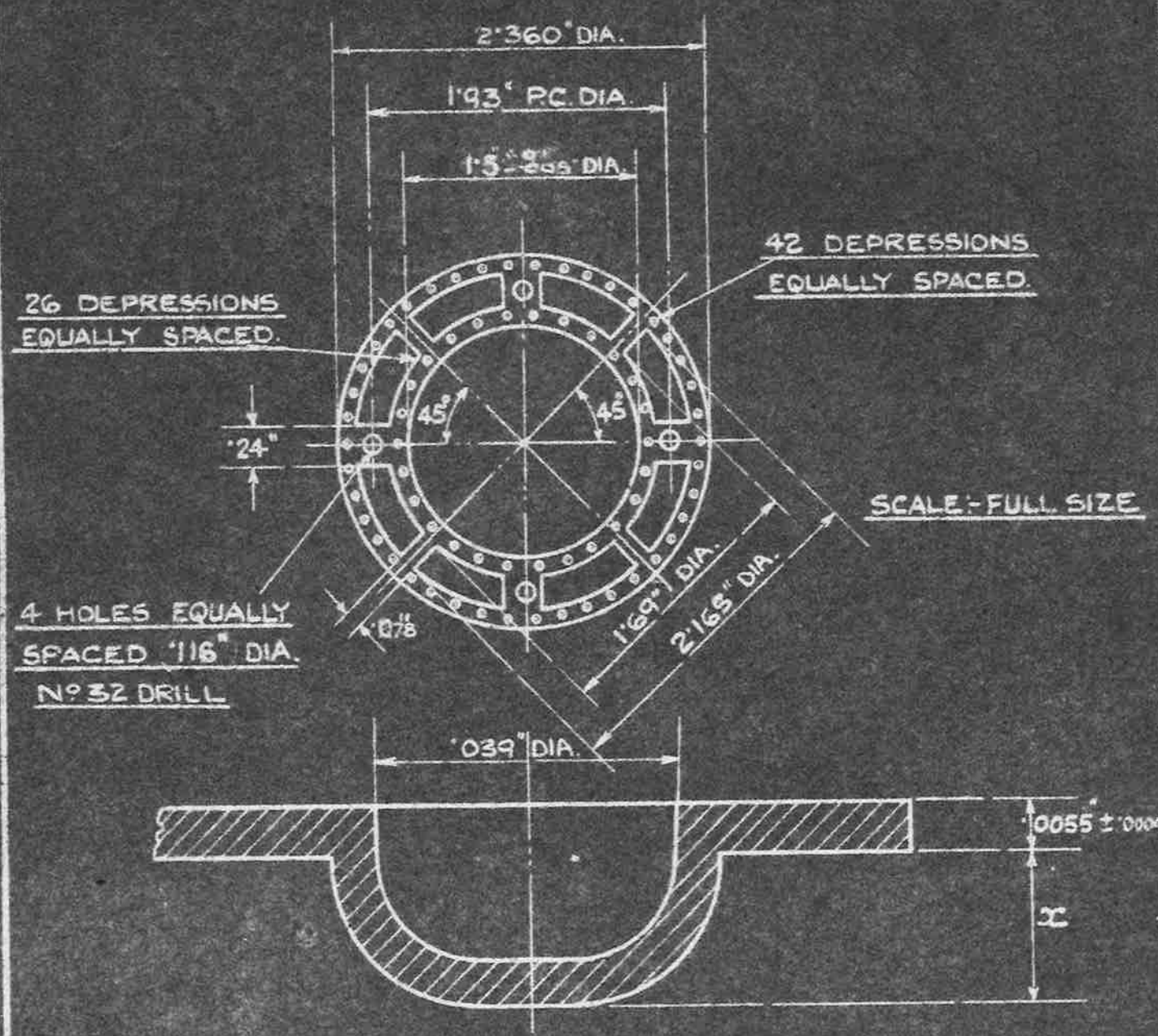
(LATEST ISSUE.)

MEDIUM FIT.

GENERAL MACHINING LIMITS ± 0.005 "

SCALE:- TWICE FULL SIZE.

ISSUED BY THE ROYAL AIRCRAFT ESTABLISHMENT MINISTRY OF AIRCRAFT PRODUCTION.	TITLE:- 300 G.P.H. FUEL FILTER				DRAWN J. DIMLOW	TRACED G.L.W. 29.10-42
	ISSUE No	1/2			CHECKED J.P. Green	APPROVED [Signature] 21.12.42
	ALTERS No	1/2				



ENLARGEMENT OF DEPRESSION.

NOTE: - FOR 300 G.P.H. PETROL FILTER A.G.S. 1008.
USE DEPRESSION DEPTH OF $0.025 \pm 0.0006(\infty)$

GENERAL LIMITS $\pm .005$

15 FILTER LAMINATION.

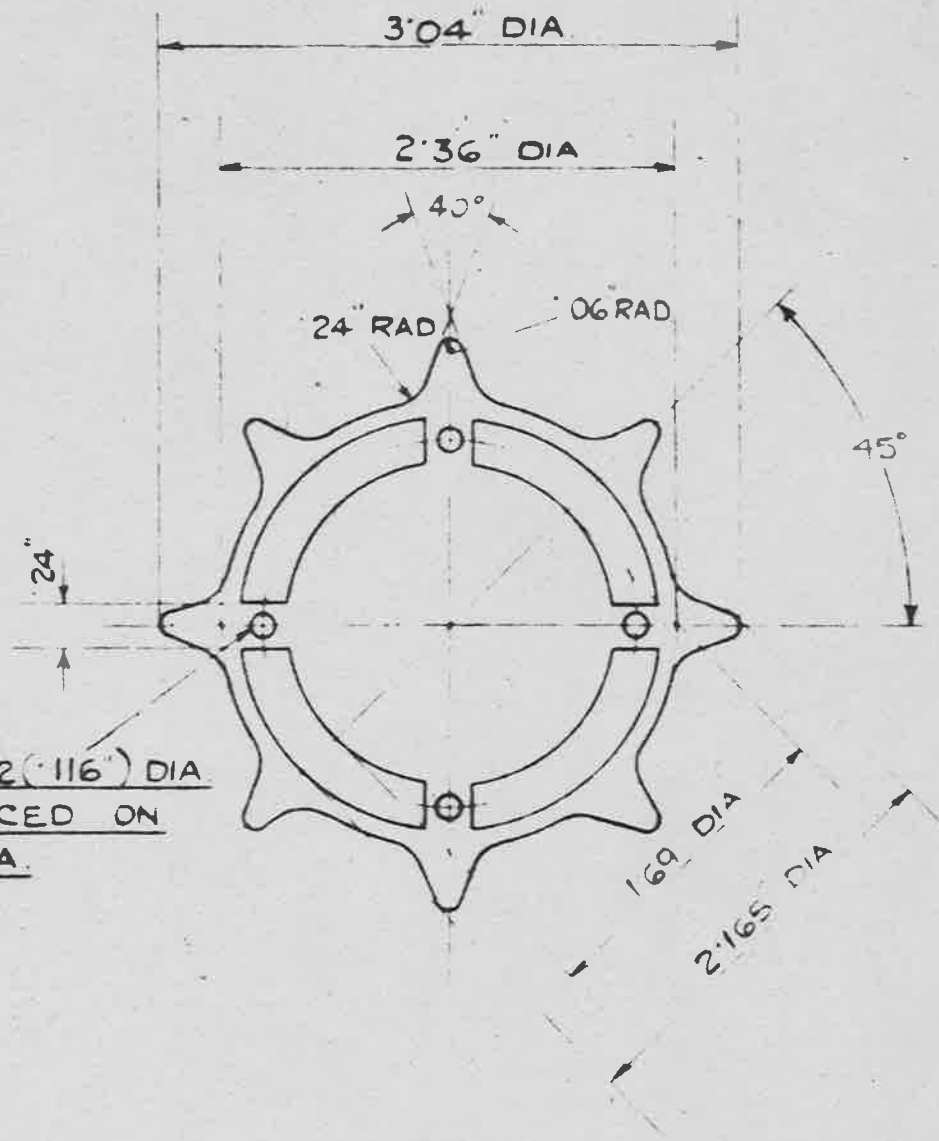
MATERIAL: - HARD ALUMINIUM SHEET TO B.S. SPEC: L.4. (LATEST ISSUE)

NOTE: - PUNCHED EDGES MUST BE CLEAN AND FREE FROM ALL TRACES OF BURRS.
FINISH: - ANODISED TO SPEC: D.T.D. 910 (LATEST ISSUE.)

ISSUED BY THE ROYAL AIRCRAFT ESTABLISHMENT MINISTRY OF AIRCRAFT PRODUCTION	TITLE: - 300 G.P.H. FUEL FILTER				DRAWN. <i>M. J. Holroyd</i>	TRACED <i>26-10-42</i>
	ISSUE No	1			CHECKED <i>M. J. Green</i>	APPROVED <i>W. A. ...</i>
	ALTER No	AGS No	483			21-12-42

3-8-42

3.8.43
Ref. App. 60



4 HOLES No 32 (.116") DIA
EQUALLY SPACED ON
1.930" P.C. DIA.

16 SWG (.064) THICK

(16) BAFFLE PLATE, FILTER PACK.

MATERIAL - HARD ALUMINIUM SHEET TO BS SPEC. DATE 1.30.42

NOTE - PUNCHED EDGES MUST BE CLEAN AND FREE FROM ALL TRACES OF BURRS.

GENERAL LIMITS ± .005"

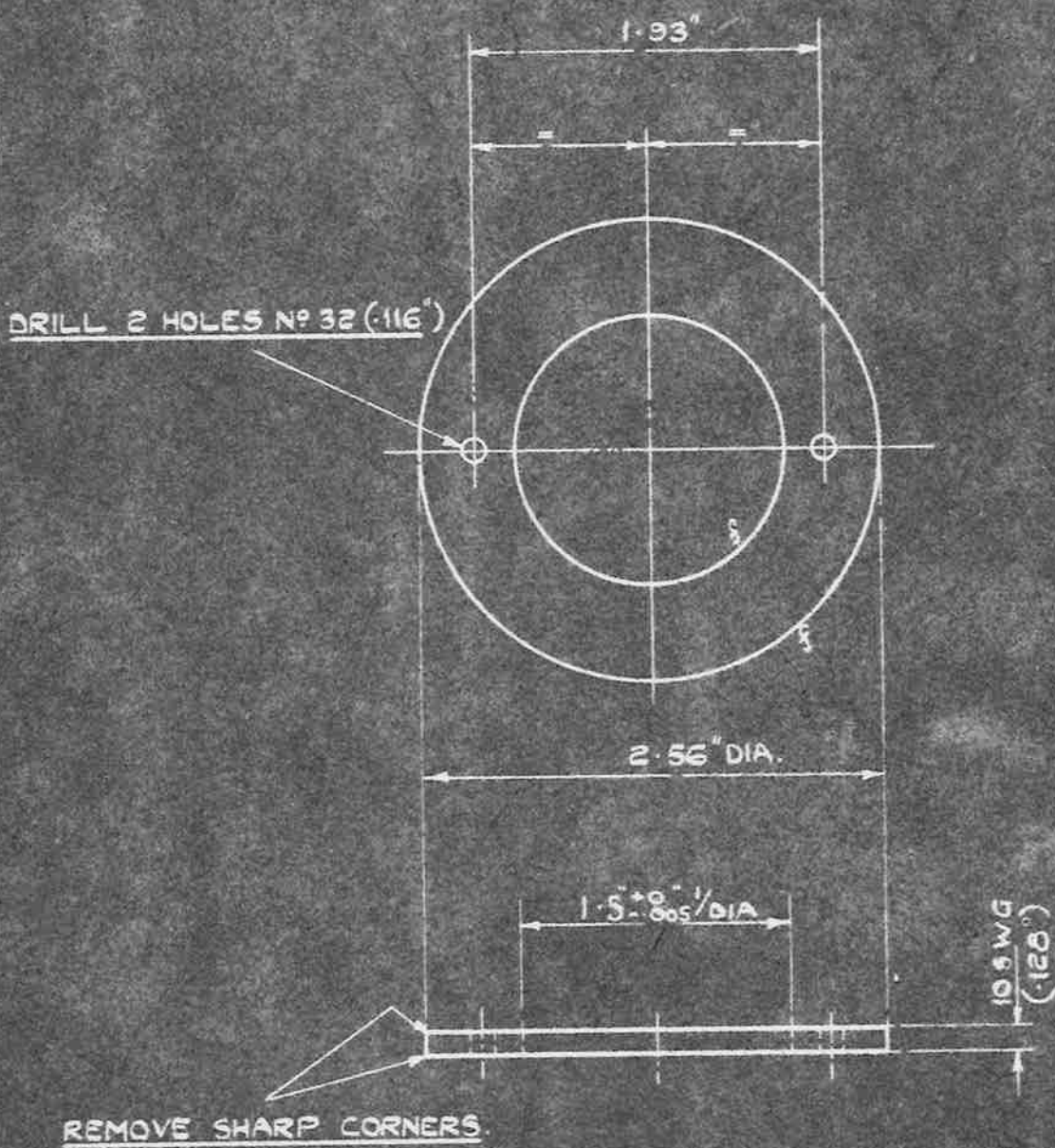
FINISH: ANODISED TO SPEC.

D.T.D. 910. (LATEST ISSUE)

SCALE FULL SIZE

ISSUED BY THE ROYAL AIRCRAFT ESTABLISHMENT MINISTRY OF AIRCRAFT PRODUCTION	TITLE:- 300 GPH FUEL FILTER				DRAWN. J. Dimelow	TRACED 27.10.42
	ISSUE No	1/2			CHECKED	APPROVED.
	ALTER No	AGS 463				

S.P. 43.
REV. 158.60.



17 BOTTOM RING:— FILTER PACK

MATERIAL:— HARD ALUMINIUM SHEET TO B.S. SPEC. L.4. (LATEST ISSUE)

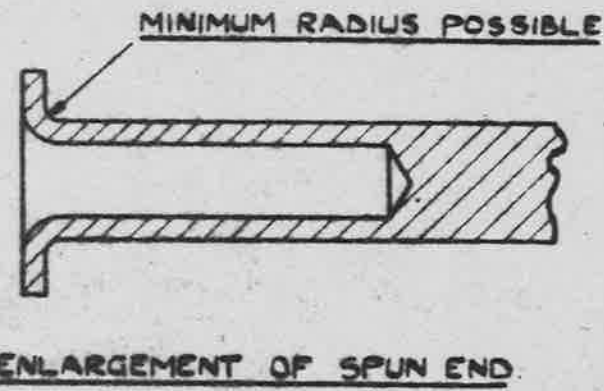
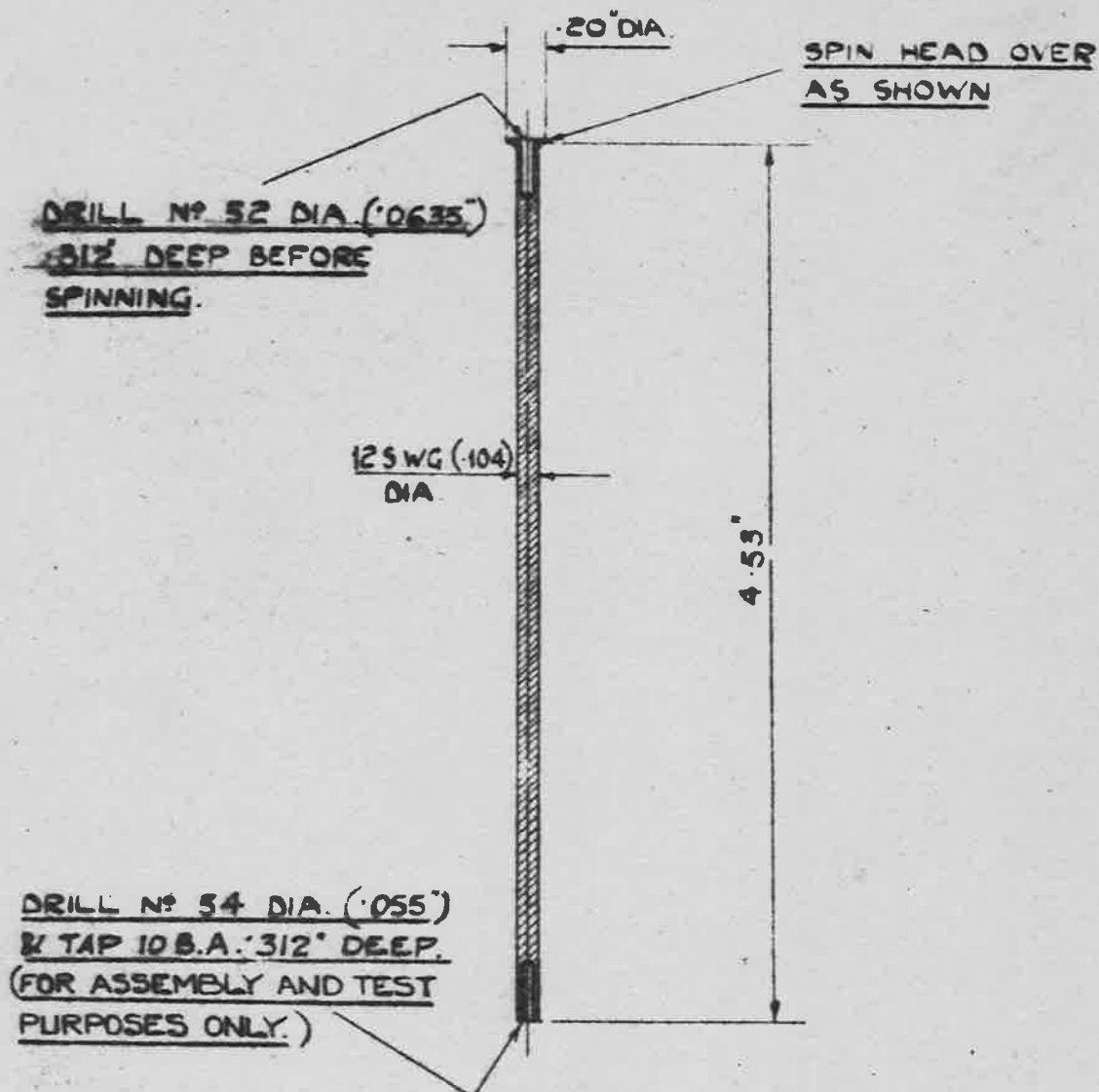
FINISH ANODISED TO SPEC. DTD. 910. (LATEST ISSUE)

GENERAL LIMITS ± .005"
MACHINE TO f MARKS.

SCALE - FULL SIZE

ISSUED BY THE ROYAL AIRCRAFT ESTABLISHMENT MINISTRY OF AIRCRAFT PRODUCTION	TITLE:- 300 G PH FUEL FILTER.				DRAWN J. DIMELON	TRACED 28-10-42
	ISSUE No	1			CHECKED J.P. Green	APPROVED 21-12-42
	ALTERATION No	AGS 483				

5-8-43
10.1.1947 60



⑱ ROD - FILTER PACK

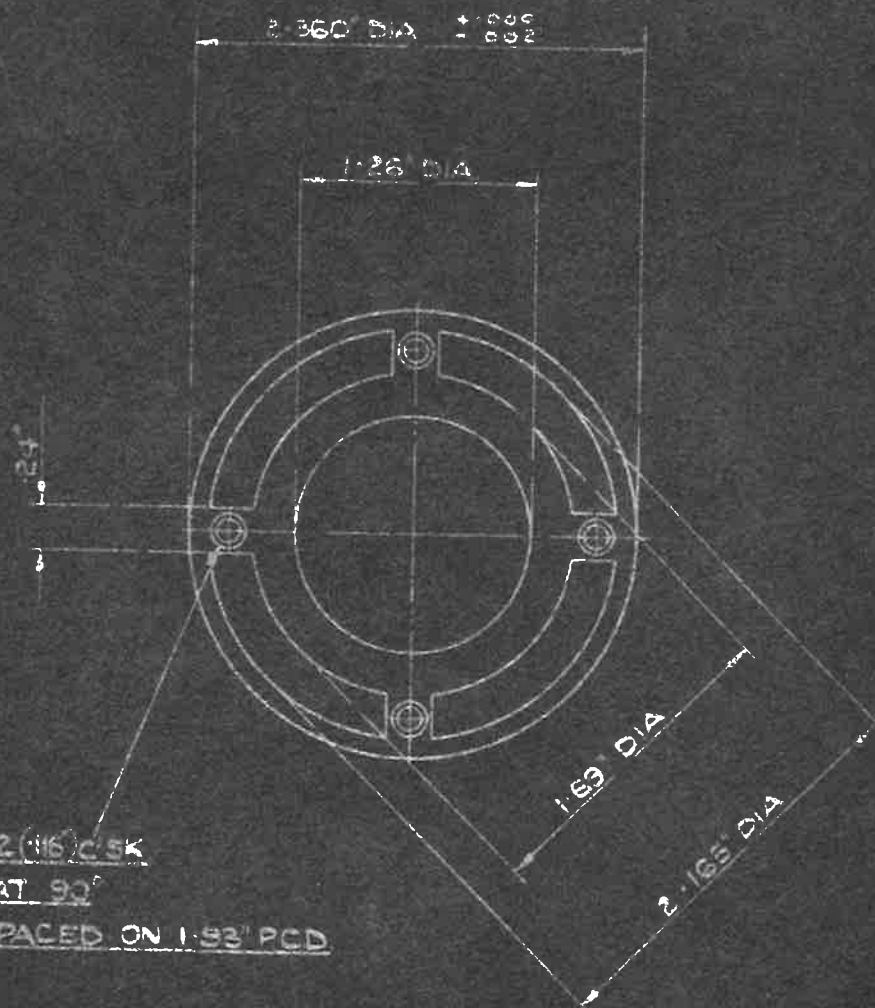
MATERIAL - MILD STEEL TO B.S. SPEC: S.I. (LATEST ISSUE)

FINISH - ZINC OR CADMIUM PLATED TO SPEC. D.T.D. 903 OR 904. (LATEST ISSUE)

GENERAL LIMITS ± .005"

SCALE - FULL SIZE.

ISSUED BY THE ROYAL AIRCRAFT ESTABLISHMENT MINISTRY OF AIRCRAFT PRODUCTION.	TITLE - 300 G.P.H. FUEL FILTER.				DRAWN J. D. M. L. W.	TRACED 28-10-43
	ISSUE N°				CHECKED B. M. W.	APPROVED 21-12-42
	ALTERATION N°					



4 HOLES NO 32 (.16) C/SK
TO 1.19 DIA. AT 90°
EQUALLY SPACED ON 1.93" PCD.

16 SWG (.064") THICK

19 TOP PLATE - FILTER PACK

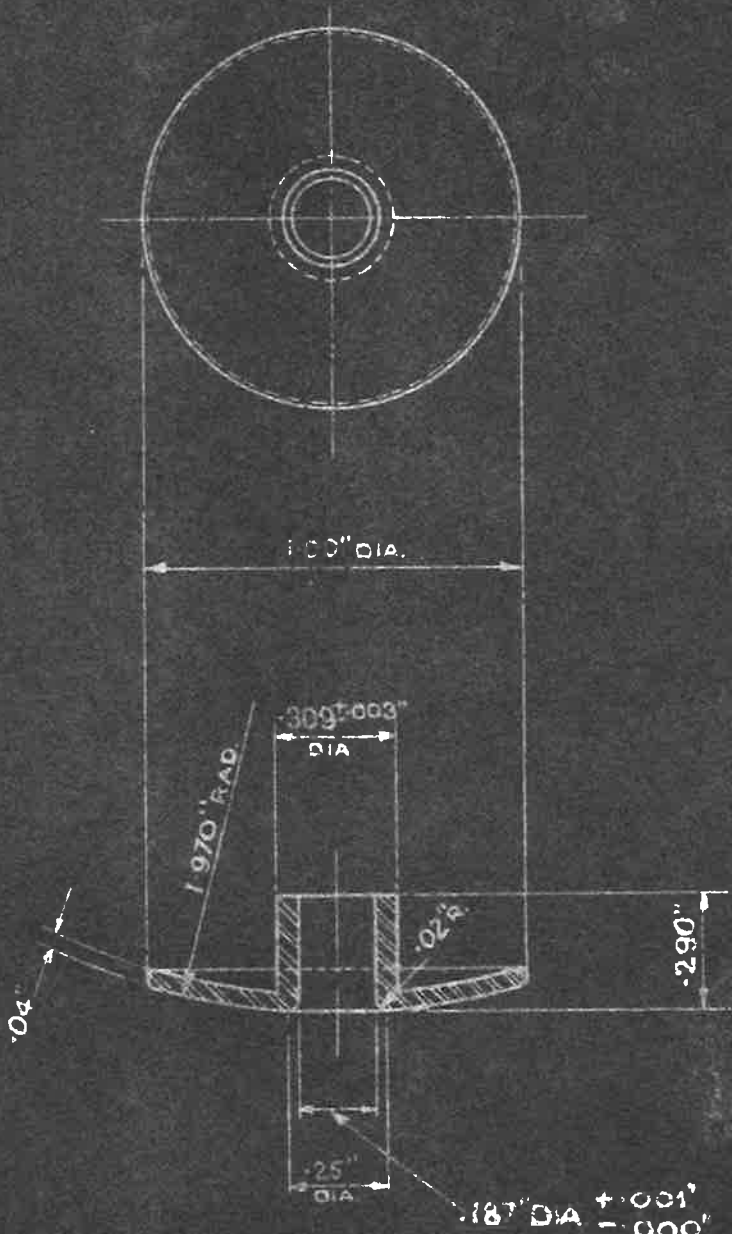
MATERIAL :- HARD ALUMINIUM SHEET TO B.S. SPEC. L 4 (LATEST ISSUE)

NOTE :- PUNCHED EDGES MUST BE CLEAN AND FREE FROM ALL TRACES OF BURRS
FINISH: ANODISED TO SPEC. D.T.D. 910 (LATEST ISSUE.)
GENERAL LIMITS ± .005"

SCALE :- FULL SIZE

ISSUED BY THE ROYAL AIRCRAFT ESTABLISHMENT MINISTRY OF AIRCRAFT PRODUCTION	TITLE:- 300 GPH FUEL FILTER				DRAWN J. DIMELON	TRACED G.L.W. 22-10-43
	ISSUE NO	1/2			CHECKED J.F.C.	APPROVED J.M.L. 21/10/43
	ALTERS NO	M.C. N° AG 1483				

3-8-42



20 END CAP (CENTRE PIN)

MATERIAL: MILD STEEL TO B.S SPEC 51 (LATEST ISSUE)

FINISH: ZINC OR CADMIUM PLATED TO SPEC. LTD 903 OR 904 (LATEST ISSUE)

GENERAL MACHINING LIMITS ±.005

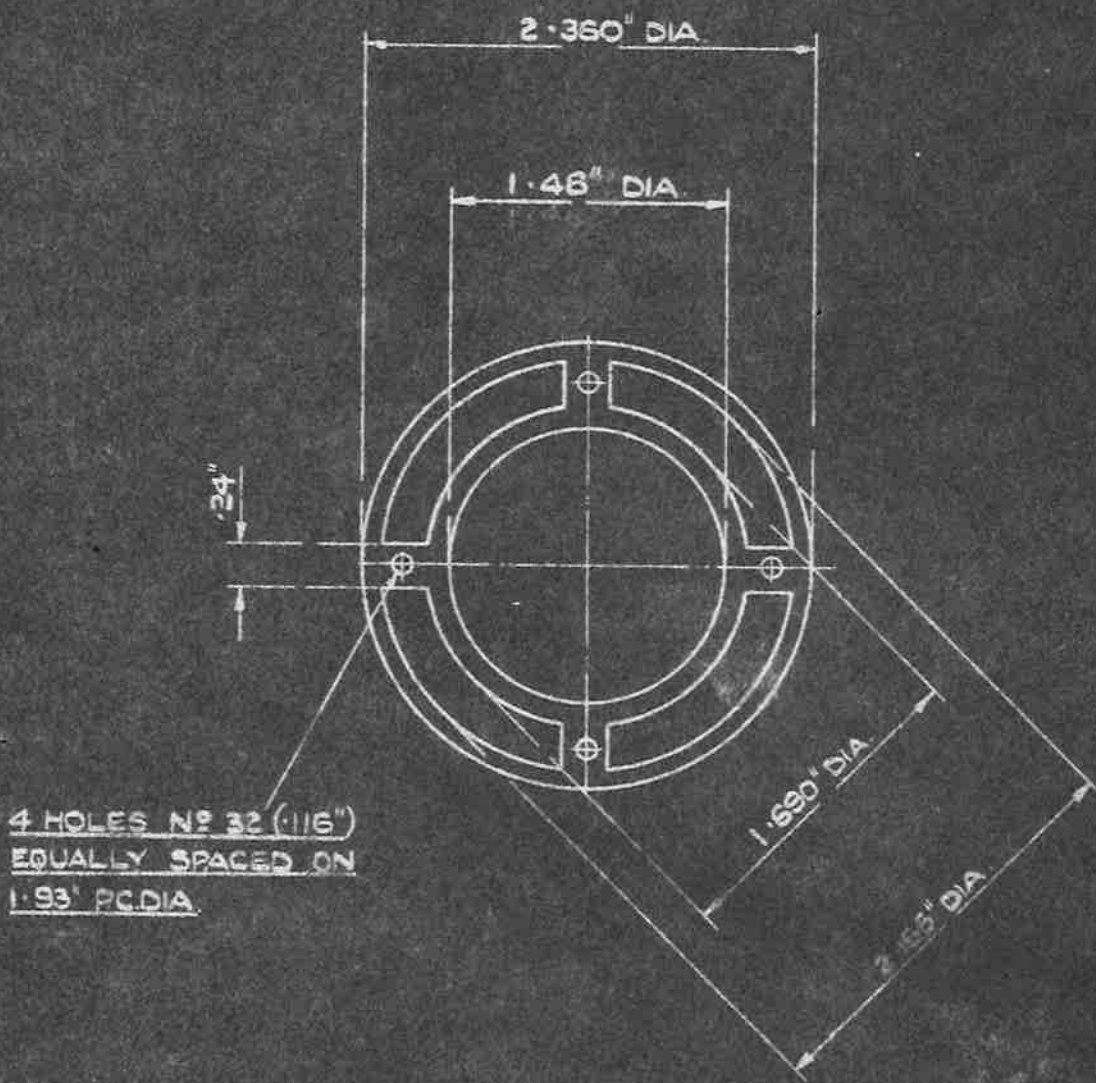
MACHINE ALL OVER.

SCALE $\frac{2}{1}$

ISSUED BY THE ROYAL AIRCRAFT ESTABLISHMENT MINISTRY OF AIRCRAFT PRODUCTION	TITLE - 300 GPH FUEL FILTER				DRAWN. R.S. STEWART.	TRACED R.C. 31-10-42
	ISSUE NO	1/1			CHECKED <i>[Signature]</i>	APPROVED <i>[Signature]</i>
	ALTERN NO	1000 443	1005 463			

(P)

3-8-48
REV. APR. 60



4 HOLES No 32 (.116")
EQUALLY SPACED ON
1.93" P.C.DIA.

22 SWG. (.029") THICK

(21) STABILISING RING - FILTER PACK

MATERIAL:- HARD ALUMINIUM SHEET TO B.S. SPEC. L.4. (LATEST ISSUE)

NOTE:- PUNCHED EDGES MUST BE CLEAN AND FREE FROM ALL TRACES OF BURRS.
FINISH: ANODISED TO SPEC. D.T.D. 910 (LATEST ISSUE.)

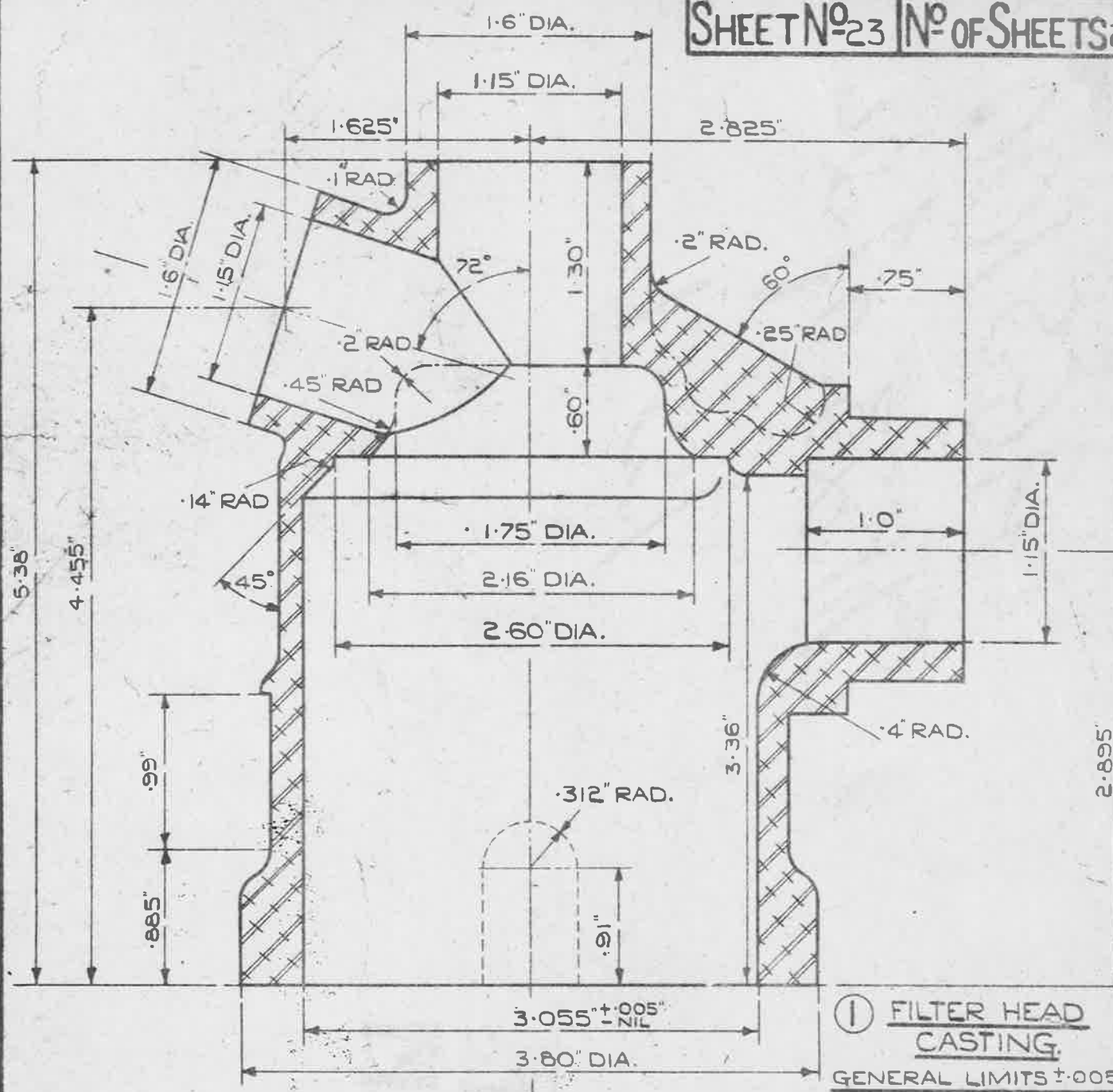
GENERAL LIMITS ± .005"

SCALE:- FULL SIZE.

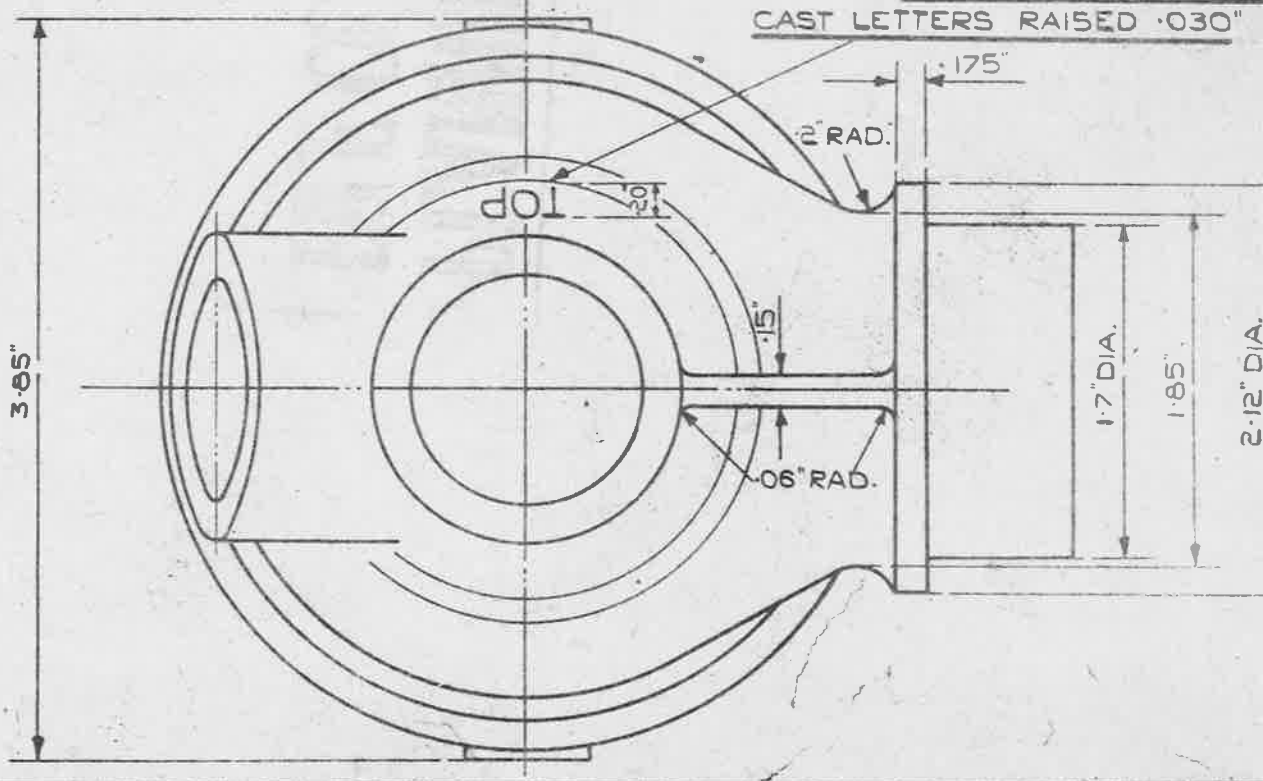
ISSUED BY THE ROYAL AIRCRAFT ESTABLISHMENT MINISTRY OF AIRCRAFT PRODUCTION.	TITLE:- 300 GPH FUEL FILTER.				DRAWN J. DIMELLOW	TRA G.L.W.
	ISSUE NO	12			CHECKED H.F. [Signature]	APPRO [Signature]
	ALTER# NO					

P)

29.8.44
AGS 555 60



① FILTER HEAD CASTING.
GENERAL LIMITS ± .005
CAST LETTERS RAISED .030"



ISSUED BY THE,
ROYAL
AIRCRAFT
ESTABLISHMENT.

TITLE:— 300 G.P.H. FUEL FILTER.

ISSUE No	1				
ALTER No					

MOD. N°
AGS 555

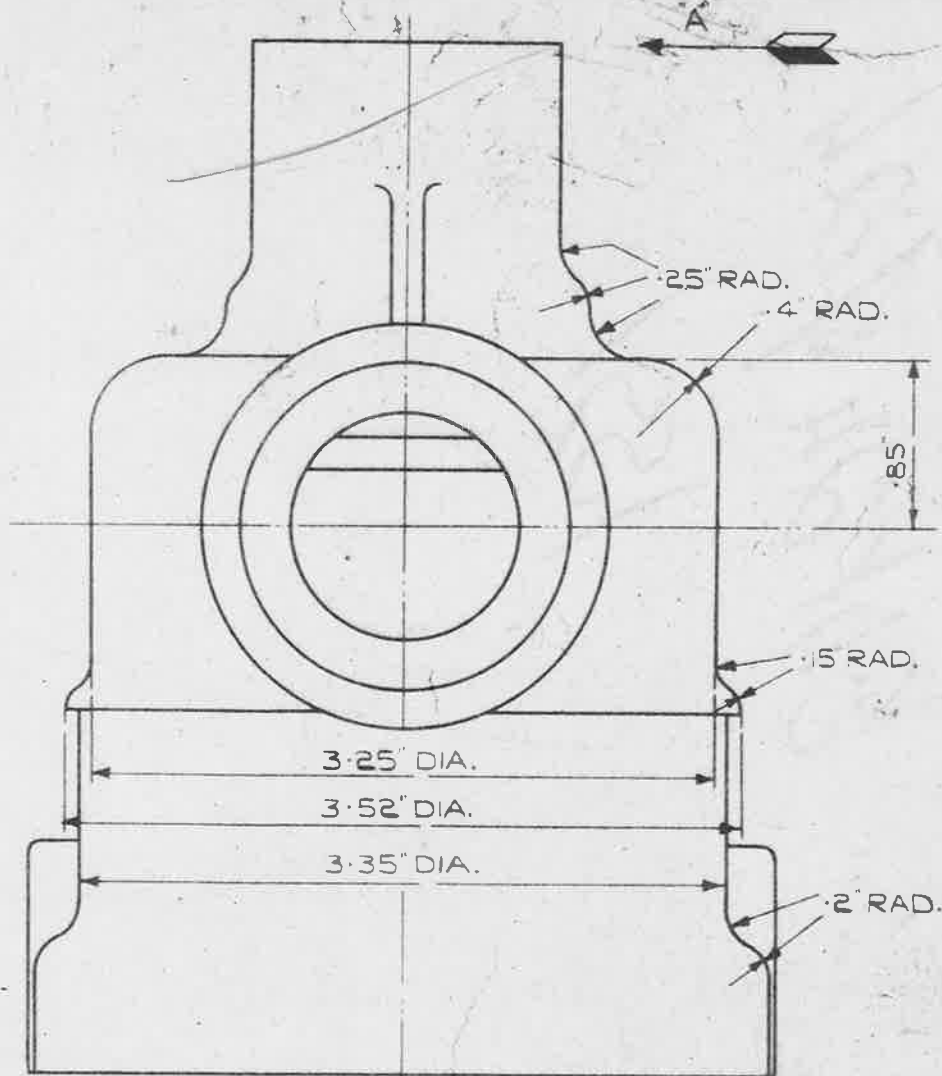
DRAWN.
R.M.

CHECKED
N.V.

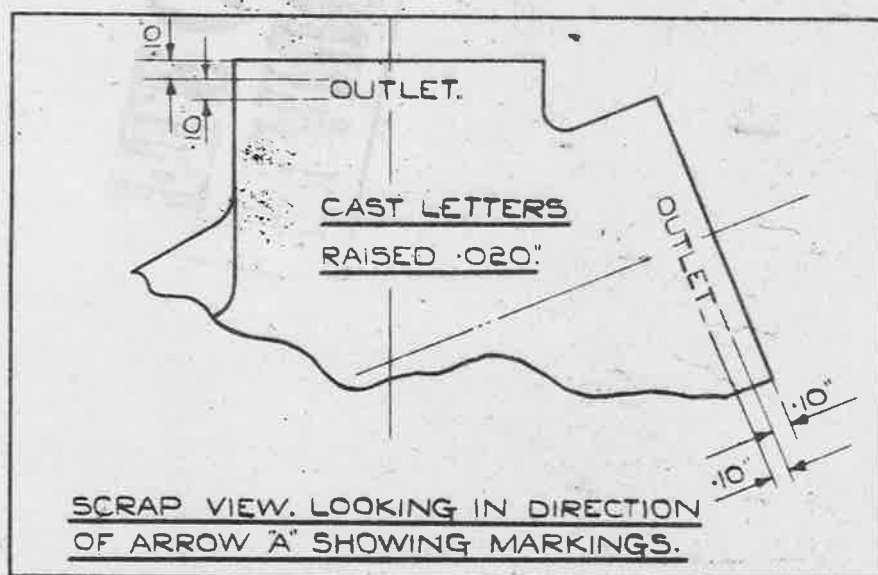
TRACE
6.W.M. 22.5.

APPROVED
[Signature]

21.6.44



① FILTER HEAD CASTING.



MAT:- ALUMINIUM ALLOY.
SPEC:- L33 (LATEST ISSUE.)
GENERAL LIMITS ±.005"

ISSUED BY THE ROYAL AIRCRAFT ESTABLISHMENT.	TITLE:- 300 G.P.H. FUEL FILTER.				DRAWN. <i>R.P.M.</i>	TRACED D.W.M. 19-5-4
	ISSUE No	/			CHECKED <i>W.L.</i>	APPROVED <i>flow</i>
	ALTER No	Mod No AGS/555				21-6-44