

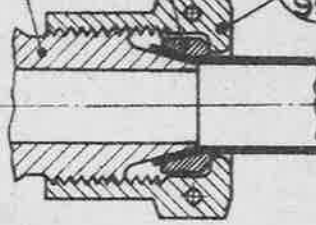
END OF CONE  
UNION BODY,  
CONE ELBOW ETC.,  
OR INTEGRAL  
UNION OF  
COMPONENT.

COLLAR

AG.S.  
952

OUTER  
SLEEVE

AG.S.  
904  
OR  
954



1 STANDARD JOINT FOR  
ALL PIPES UP TO  $\frac{1}{2}$ "

END OF UNION  
BODY, ELBOW,  
TEE, ETC., OR  
INTEGRAL UNION  
OF COMPONENT.

A.G.S. 1101

ADAPTOR  
NIPPLE

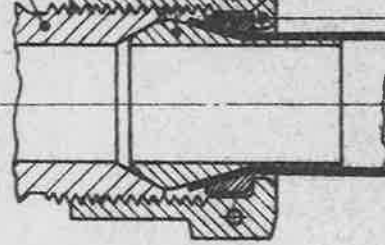
AG.S.  
1142

COLLAR

AG.S.  
952

OUTER  
SLEEVE

AG.S.  
904  
OR  
954



2 PIPE TO FITTING JOINT.  
SIZES  $\frac{5}{8}$ " AND ABOVE.

NOTE:- THIS TYPE OF JOINT CAN ALSO BE USED  
FOR SIZES  $\frac{1}{8}$ " TO  $\frac{1}{2}$ " WHEN CONNECTION IS REQUIRED  
TO BE MADE TO A COMPONENT NOT PROVIDED  
WITH THE STANDARD SOLID CONE END.

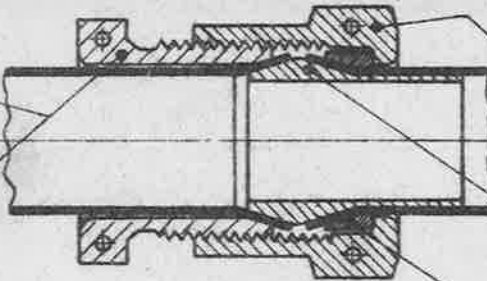
NOTE:- THIS TYPE OF JOINT CAN ALSO BE USED FOR SIZES  $\frac{3}{16}$ " TO  $\frac{1}{2}$ " WHEN SPACE  
CONSIDERATIONS PRECLUDE THE USE OF THE ARRANGEMENT SHOWN IN FIG. 1.

AG.S.  
1218  
&  
905

INNER SLEEVE

AG.S.  
955

INNER SLEEVE



AG.S.  
904  
OR  
954

OUTER SLEEVE

AG.S.  
1170

NIPPLE

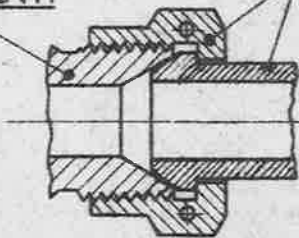
AG.S.  
952

COLLAR

3 PIPE TO PIPE JOINT.  
SIZES  $\frac{5}{8}$ " AND ABOVE.

END OF UNION  
BODY, ELBOW,  
TEE, ETC., OR  
INTEGRAL UNION  
OF COMPONENT.

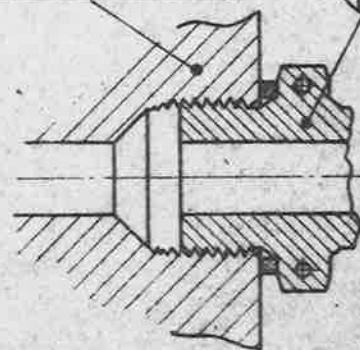
END FITTINGS  
OF TYPICAL  
APPROVED HOSE  
ASSEMBLY.



4 HOSE ASSEMBLY TO FITTING.  
ALL SIZES.

COMPONENT TAPPED  
TO ACCOMMODATE  
A.G.S. 1104 OR A.G.S. 1105.

END OF  
AG.S.  
1104  
OR  
1105



5 PIPE TO COMPONENT.  
ALL SIZES.

TITLE:- PIPE COUPLINGS. -  
ARRANGE<sup>MT</sup> of PIPE JOINTS.

ISSUE

8

9

ALT. N<sup>o</sup>

AS/AGS/WD/AGS

757 921

MINISTRY OF SUPPLY

APPLICATIONS FOR A.G.S. SHEETS TO:-  
A.T.P.4A. THAMES HOUSE, MILLBANK, S.W.1.

GENERAL INQUIRIES TO:-  
A.D.S.A.E. THAMES HOUSE, MILLBANK, S.W.1.

R.A.E. APPROVAL

SIGNATURE

*A. J. J. J.*

SHEET N<sup>o</sup>

N<sup>o</sup> OF SHEETS

DATE

17.3.49

1

3

A.D. S.A.E. APPROVAL

SIGNATURE

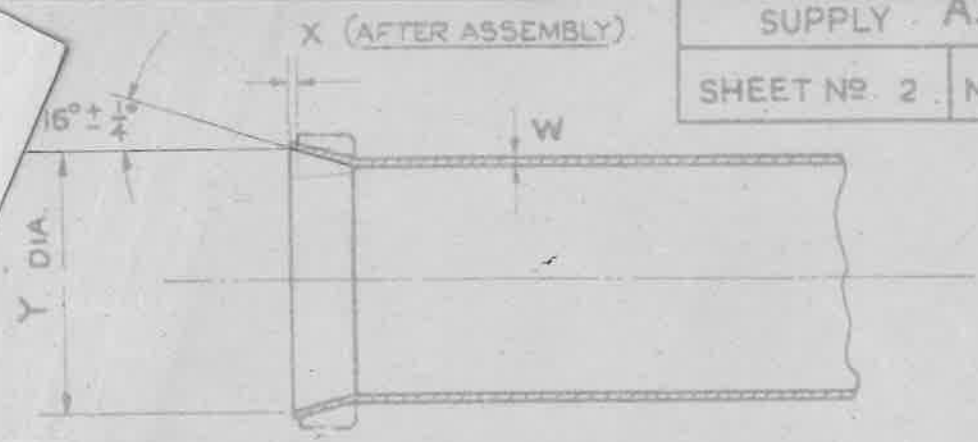
*G. L. J. J.*

DATE

13/5/49

A.G.S. N<sup>o</sup> 1101

ORIGINAL APPROVAL DATE. 12.10.42



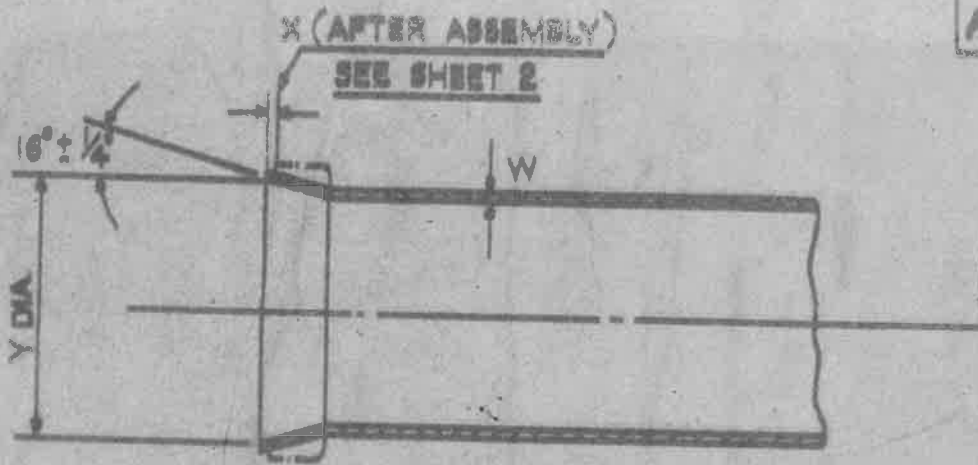
DIMENSIONS OF FLARED END OF CONNECTING TUBE.

OUTSIDE DIA. OF PIPE	Y		W
	MIN.	MAX.	S.W.G.
3/16"	230"	235"	24
	225"	230"	22
1/4"	320"	330"	24
	310"	320"	22
5/16"	390"	400"	22
	380"	390"	20
3/8"	460"	470"	22
	450"	460"	20
7/16"	525"	540"	22
	515"	530"	20
1/2"	590"	610"	22
	580"	600"	20
5/8"	715"	735"	22
	705"	725"	20
3/4"	840"	860"	22
	830"	850"	20
7/8"	965"	985"	22
	955"	975"	20
1"	1095"	1115"	22
	1080"	1100"	20
1 1/4"	1345"	1365"	22
	1330"	1350"	20
1 1/2"	1600"	1620"	22
	1585"	1605"	20

TABLE GIVING EXTENSION OF FLARE THROUGH COLLAR OR INNER SLEEVE AFTER ASSEMBLY.

Ø OF PIPES	DIMENSION "X"
3/16" & 1/4"	01" MIN. TO 02" MAX.
5/16" & 3/8"	02" MIN. TO 03" MAX.
7/16" TO 2 1/2"	03" MIN. TO 05" MAX.

ISSUED BY THE ROYAL AIRCRAFT ESTABLISHMENT.	TITLE: PIPE COUPLINGS:- ARRANGEMENT OF PIPE JOINTS.		DRAWN C.T. Reynolds	TRACED S.J. 30-10-48
	ISSUE N°	3	CHECKED <i>[Signature]</i>	APPROVED <i>[Signature]</i>
	ALTER N°	AS N° AGS/642	Mod/AGS 639	



5-2-48  
7/STAIN/2

DIMENSIONS OF FLARED END OF CONNECTING TUBE.

OUTSIDE DIA. OF PIPE	Y		W
	MIN.	MAX.	SWG
2"	2.040"	2.080"	18
	2.010"	2.050"	16
2 1/2"	2.650"	2.670"	18
	2.650"	2.650"	16

TITLE:- PIPE COUPLINGS  
ARRANGEMENT OF PIPE JOINTS.

ISSUE	1				
ALTN#	639				
R.A.E. APPROVAL		AD. S.A.E. APPROVAL			
SIGNATURE	DATE	SIGNATURE	DATE		
<i>[Signature]</i>	14.1.48	<i>[Signature]</i>	28/2/48		
SHEET N <sup>o</sup>	3	A.G.S. N <sup>o</sup> 1101			
N <sup>o</sup> OF SHEETS	3				

**MINISTRY OF SUPPLY**  
APPLICATIONS FOR A.G.S. SHEETS TO:-  
R.T.P. 4A, THAMES HOUSE, MILLBANK, S.W.1.  
GENERAL INQUIRIES TO:-  
A.D. S.A.E. THAMES HOUSE, MILLBANK, S.W.1.