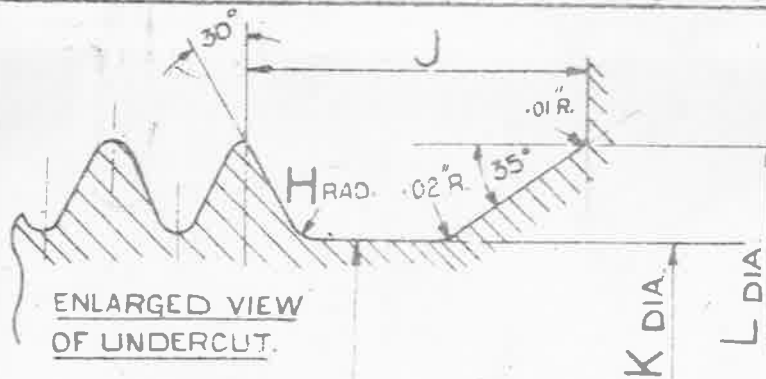
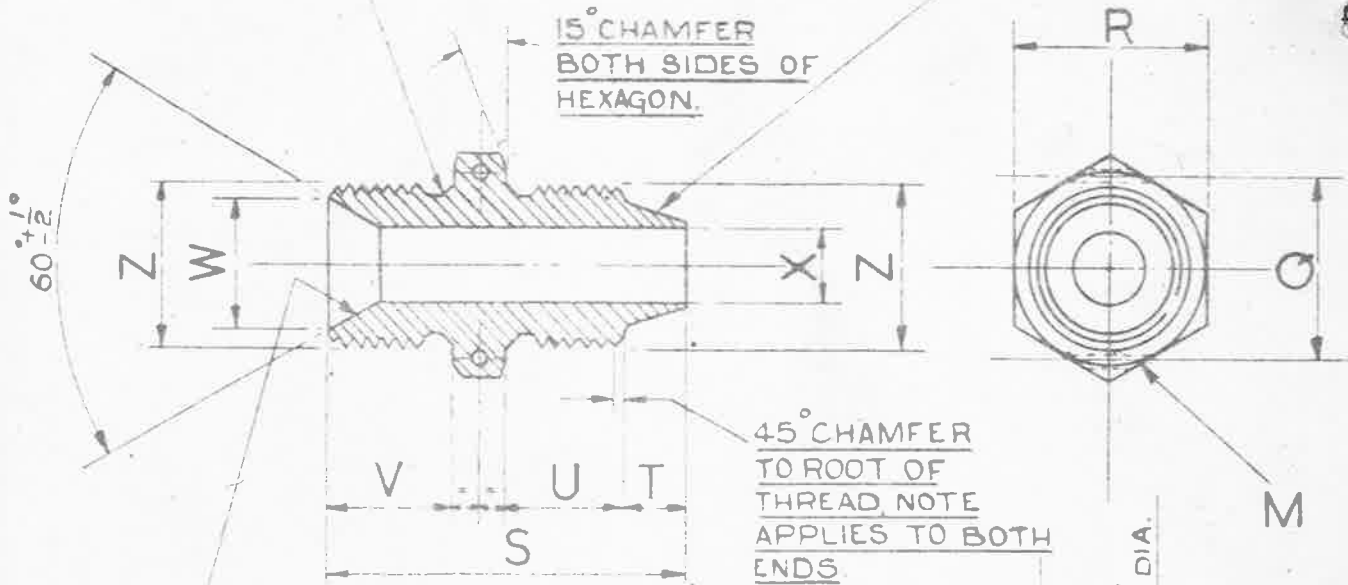


SEE A.G.S. 100 FOR GENERAL INFORMATION.



SMOOTH FINISH FREE FROM TOOL MARKS.



SMOOTH FINISH FREE FROM TOOL MARKS.

ENLARGED VIEW OF CONE END.

SIZES	O/DIA OF PIPE	Z	Y	X	W	V	U	T	S	R	Q	N	M	L	K	J	H	
		BSP THREAD	+010 -0	DRILL	+005	+01	+01	+01	+01	+01	MIN.	MAX.	+01	DIA.	+0	+0	+01	
A	3/16"	1/8"	.160"	3/32"	.295"	.45"	.43"	.22"	1.35"	.595"	.600"	.54"	.03"	1/16"	.39"	.330"	.10"	.01"
B	1/4"	1/4"	.224"	5/32"	.410"	.45"	.46"	.28"	1.44"	.705"	.710"	.67"	.04"	1/16"	.52"	.440"	.14"	.01"
BB	5/16"	9/16" 60° O/D.	.267"	3/16"	.480"	.52"	.48"	.32"	1.57"	.815"	.820"	.79"	.04"	1/16"	.60"	.525"	.14"	.01"
C	3/8"	3/8"	.333"	1/4"	.550"	.52"	.53"	.32"	1.64"	.915"	.920"	.92"	.04"	1/16"	.66"	.580"	.14"	.01"
CC	7/16"	1 1/16" 75° O/D.	.377"	5/16"	.600"	.55"	.57"	.32"	1.72"	1.002"	1.010"	.96"	.06"	1/16"	.75"	.650"	.18"	.015"
D	1/2"	1/2"	.438"	3/8"	.690"	.65"	.60"	.32"	1.85"	1.002"	1.010"	.96"	.06"	1/16"	.83"	.720"	.18"	.015"

THE MATERIAL TO BE LIGHT ALLOY TO D.T.D. 423. (LATEST ISSUE)

FINISH:- TO BE ANODISED TO SPEC: D.T.D. 910. (LATEST ISSUE)

NOTES:- SCREW THREADS TO B.S. SPEC: N° 84-1940.

MEDIUM FIT, TRUNCATED THREADS TO AMENDMENT N° 3-1945.

FOR ARRANGEMENT OF PIPE JOINT, SEE A.G.S N° 1101.

WORKING PRESSURE:- 3,000 LB/SQ. IN. FOR SIZES UP TO 1/2" B.S.P.

ISSUED BY ROYAL AIRCRAFT ESTABLISHMENT.

TITLE:- PIPE COUPLINGS. (LIGHT ALLOY). UNION BODY. (CONE TO NIPPLE TYPE)

DRAWN CT Reynolds

TRACED H E JOHNSON

ISSUE N°	3	4	5	6	6
ALTER N°	AS/AGS 663	AS/AGS 663	AS/AGS 877	AS/AGS 988	SM 856

CHECKED APPROVED

A.G.S. 1106-SHEET 1.

REV	DATE	BY
1	11-11-24	SM 2024



15° CHAMFER BOTH SIDES OF HEXAGON

45° CHAMFER TO ROOT OF THREAD. NOTE APPLIES TO BOTH ENDS.



SEE A.G.S. 100 FOR GENERAL INFORMATION.
 8.5 PT. THREADS TO B.S. SPEC. NO 2779 MEDIUM FIT INDICATED FOR ARRANGEMENT OF PIPE JOINT SEE A.G.S. 1101.
 WORKING PRESSURE: 3,000 LB. SQ. IN.

NO.	DESCRIPTION	QTY.	UNIT	PT.	HT.	HT.	HT.	HT.	HT.	HT.
1	ALUMINUM ALLOY									
2	ALUMINUM ALLOY									
3	ALUMINUM ALLOY									
4	ALUMINUM ALLOY									
5	ALUMINUM ALLOY									
6	ALUMINUM ALLOY									
7	ALUMINUM ALLOY									
8	ALUMINUM ALLOY									
9	ALUMINUM ALLOY									
10	ALUMINUM ALLOY									
11	ALUMINUM ALLOY									
12	ALUMINUM ALLOY									
13	ALUMINUM ALLOY									
14	ALUMINUM ALLOY									
15	ALUMINUM ALLOY									
16	ALUMINUM ALLOY									
17	ALUMINUM ALLOY									
18	ALUMINUM ALLOY									
19	ALUMINUM ALLOY									
20	ALUMINUM ALLOY									
21	ALUMINUM ALLOY									
22	ALUMINUM ALLOY									
23	ALUMINUM ALLOY									
24	ALUMINUM ALLOY									
25	ALUMINUM ALLOY									
26	ALUMINUM ALLOY									
27	ALUMINUM ALLOY									
28	ALUMINUM ALLOY									
29	ALUMINUM ALLOY									
30	ALUMINUM ALLOY									
31	ALUMINUM ALLOY									
32	ALUMINUM ALLOY									
33	ALUMINUM ALLOY									
34	ALUMINUM ALLOY									
35	ALUMINUM ALLOY									
36	ALUMINUM ALLOY									
37	ALUMINUM ALLOY									
38	ALUMINUM ALLOY									
39	ALUMINUM ALLOY									
40	ALUMINUM ALLOY									
41	ALUMINUM ALLOY									
42	ALUMINUM ALLOY									
43	ALUMINUM ALLOY									
44	ALUMINUM ALLOY									
45	ALUMINUM ALLOY									
46	ALUMINUM ALLOY									
47	ALUMINUM ALLOY									
48	ALUMINUM ALLOY									
49	ALUMINUM ALLOY									
50	ALUMINUM ALLOY									
51	ALUMINUM ALLOY									
52	ALUMINUM ALLOY									
53	ALUMINUM ALLOY									
54	ALUMINUM ALLOY									
55	ALUMINUM ALLOY									
56	ALUMINUM ALLOY									
57	ALUMINUM ALLOY									
58	ALUMINUM ALLOY									
59	ALUMINUM ALLOY									
60	ALUMINUM ALLOY									
61	ALUMINUM ALLOY									
62	ALUMINUM ALLOY									
63	ALUMINUM ALLOY									
64	ALUMINUM ALLOY									
65	ALUMINUM ALLOY									
66	ALUMINUM ALLOY									
67	ALUMINUM ALLOY									
68	ALUMINUM ALLOY									
69	ALUMINUM ALLOY									
70	ALUMINUM ALLOY									
71	ALUMINUM ALLOY									
72	ALUMINUM ALLOY									
73	ALUMINUM ALLOY									
74	ALUMINUM ALLOY									
75	ALUMINUM ALLOY									
76	ALUMINUM ALLOY									
77	ALUMINUM ALLOY									
78	ALUMINUM ALLOY									
79	ALUMINUM ALLOY									
80	ALUMINUM ALLOY									
81	ALUMINUM ALLOY									
82	ALUMINUM ALLOY									
83	ALUMINUM ALLOY									
84	ALUMINUM ALLOY									
85	ALUMINUM ALLOY									
86	ALUMINUM ALLOY									
87	ALUMINUM ALLOY									
88	ALUMINUM ALLOY									
89	ALUMINUM ALLOY									
90	ALUMINUM ALLOY									
91	ALUMINUM ALLOY									
92	ALUMINUM ALLOY									
93	ALUMINUM ALLOY									
94	ALUMINUM ALLOY									
95	ALUMINUM ALLOY									
96	ALUMINUM ALLOY									
97	ALUMINUM ALLOY									
98	ALUMINUM ALLOY									
99	ALUMINUM ALLOY									
100	ALUMINUM ALLOY									

A.G.S. 1106-SHEET 1

A.G.S. 1106 - SHEET 2

SM2027

M A R K	O/DIA. OF PIPE.	H	J	K	L	M	N	Q	R	S	T	U	V	W	X	Y	Z
A	$\frac{3}{16}$.010"	.110"	.330"	.390"	$\frac{1}{16}$.050"	.550"	.600"	1-360"	.230"	.440"	.460"	.300"	$\frac{3}{32}$.170"	$\frac{1}{8}$
B	$\frac{1}{4}$.010"	.150"	.440"	.520"	$\frac{1}{16}$.040"	.680"	.710"	1-450"	.290"	.470"	.460"	.415"	$\frac{5}{32}$.234"	$\frac{1}{4}$
B-8	$\frac{5}{16}$.010"	.150"	.525"	.600"	$\frac{1}{16}$.040"	.800"	.820"	1-580"	.350"	.490"	.530"	.485"	$\frac{3}{16}$.277"	19 TPL
C	$\frac{3}{8}$.010"	.150"	.580"	.660"	$\frac{1}{16}$.040"	.930"	.920"	1-650"	.330"	.540"	.530"	.555"	$\frac{1}{4}$.343"	$\frac{3}{8}$
C-C	$\frac{7}{16}$.015"	.180"	.650"	.750"	$\frac{1}{16}$.060"	.970"	1-010"	1-730"	.330"	.580"	.560"	.605"	$\frac{5}{16}$.387"	14 TPL
D	$\frac{1}{2}$.015"	.180"	.720"	.830"	$\frac{1}{16}$.060"	.970"	1-002"	1-840"	.330"	.610"	.660"	.695"	$\frac{3}{8}$.448"	$\frac{1}{2}$

ON MARKS 'BB' AND 'CC' THREADS TO BE TO B.S. SPEC. N2 B 4, WHITWORTH FORM.

NO.	DRAWING OR PART No.	DESCRIPTION	SCALE	LISTS NOT SHOWN	MATERIAL - REPAIRS

HT

PT

DATE

1957

DESIGNED BY THE SOCIETY OF BRITISH MANUFACTURING ENGINEERS LTD., 15, KING STREET, ST. JAMES'S, LONDON, S.W.1.

PIPE COUPLINGS (ALUMINUM ALLOY) UNION BODY (CONE TO NIPPLE TYPE)

A.G.S. 1106 - SHEET 2

THIS IS A PHOTOGRAPHIC REDUCTION. DRAWING MUST NOT BE SCALED.