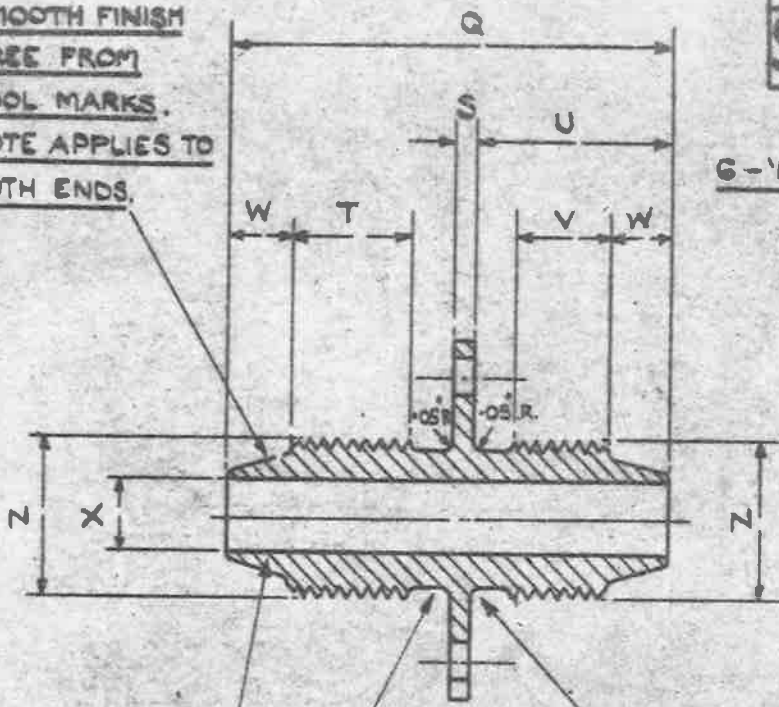
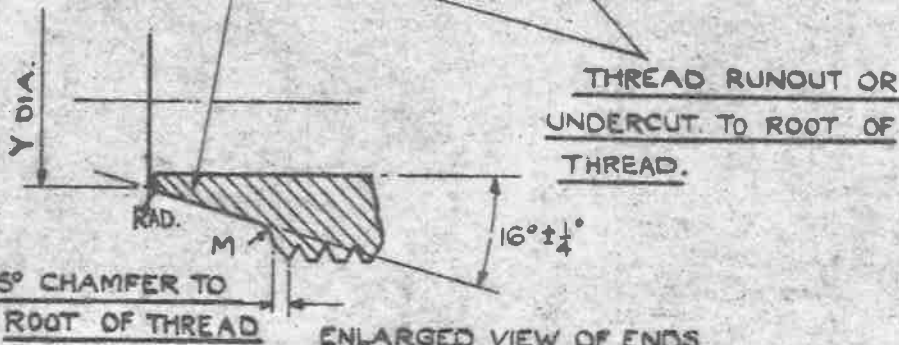
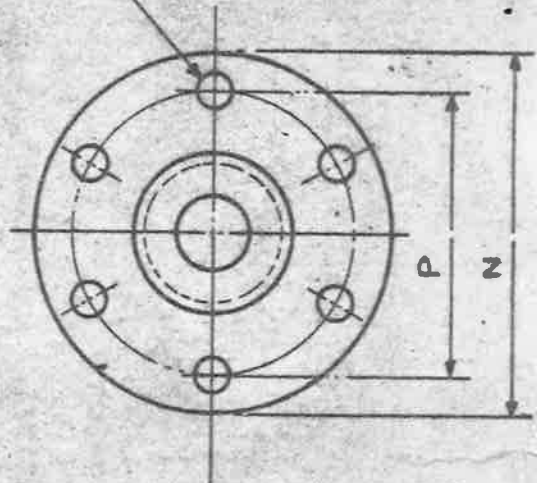


Rev. Ags. 62.

**SMOOTH FINISH
FREE FROM
TOOL MARKS.
NOTE APPLIES TO
BOTH ENDS.**



6-'L' DIA. HOLES EQUALLY SPACED



SEE A.G.S. 100 FOR GENERAL INFORMATION.

MARK	% OF PIPE	Z	Y	X	W	FULL V THREAD	U	FULL T THREAD	S	Q	P	N	M	L
		B.S.P. THREAD	+0.010 -0	DIA. DRILL	+0.01 -0	±0.01	+0.01 -0	±0.01	+0.01 -0	±0.01	±0.005	±0.01		DIA. DRILL
A	3/16"	1/8"	.160"	3/32"	.22"	.36"	.72"	.50"	.06"	1.71"	.80"	1.10"	.03"	5/32"
B	1/4"	1/4"	.224"	5/32"	.28"	.39"	.85"	.50"	.08"	1.94"	1.00"	1.30"	.04"	11/32"
BB	5/16"	15T.P.I. WHIT FORM 60% 2/8"	.267"	3/16"	.32"	.40"	.91"	.55"	.08"	2.08"	1.2"	1.50"	.04"	5/32"
C	3/8"	3/8"	.333"	1/4"	.32"	.42"	.93"	.55"	.08"	2.12"	1.30"	1.65"	.04"	13/64"
CC	7/16"	14T.P.I. WHIT FORM 75% 5/16"	.377"	5/16"	.32"	.47"	1.01"	.60"	.10"	2.29"	1.40"	1.75"	.06"	13/64"
D	1/2"	1/2"	.438"	3/8"	.32"	.48"	1.03"	.60"	.10"	2.33"	1.50"	1.85"	.06"	13/64"

'825

THE MATERIAL TO BE LIGHT ALLOY TO D.T.D. 423. (LATEST ISSUE).

FINISH : TO BE ANODISED TO SPEC : D.T.D. 910. (LATEST ISSUE).

NOTES :- SCREW THREADS TO B.S. SPEC. No. 84 - 1940,

MEDIUM FIT, TRUNCATED THREADS TO AMENDMENT N°3 - 1945.

WORKING PRESSURE :- 3,000 LB/SQ. IN. FOR SIZES UP TO 1/2" B.S.P.

WITH MARK	A	B	BB	C	CC	D
WASHER PLATE	MARK	MARK	MARK	MARK	MARK	MARK
USE A.G.S. N° 1115	1	2	3	4	5	6

ISSUED BY
ROYAL
AIRCRAFT
ESTABLISHMENT

TITLE:- PIPE COUPLINGS.

(LIGHT ALLOY)
FLANGED BULKHEAD CONE UNION BODY 3/16" TO 1/2"

DRAWN
c.T. Reynolds

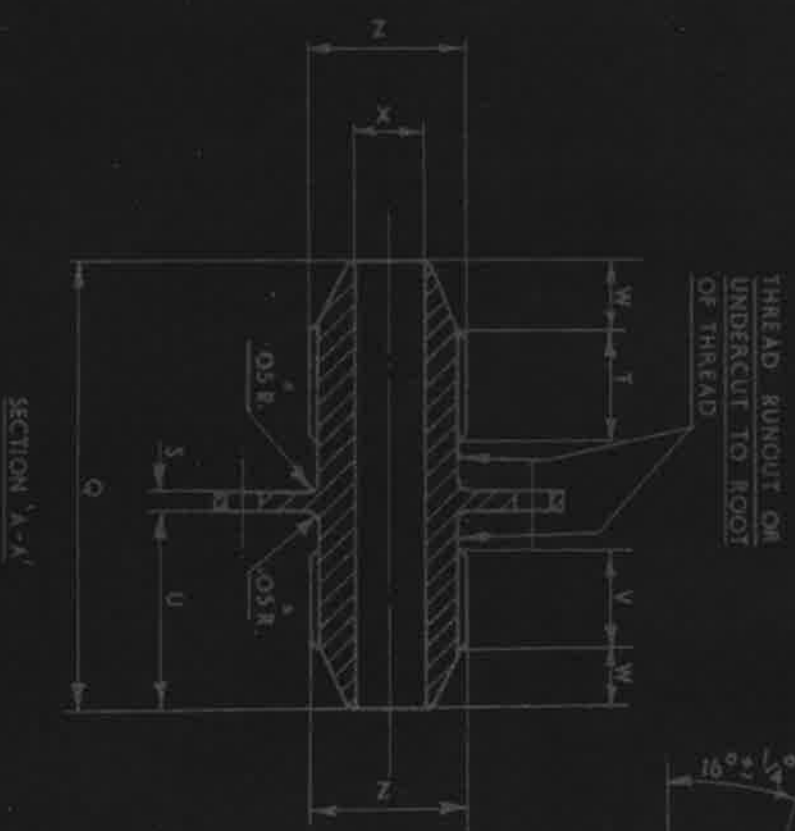
TRACED
H.W.
27-9-41.

ISSUE No	1	2	3	4	4
ALTER. No	M88 0	AS/AGS/ 663	AS/AGS/ 877	AS/AGS/ 988	SM 856

CHECKED
APPROVED
7. 11. 41

ISSUE	ALT. NO.
6	F.2.
7	F.46
8	F.96
9	F.101.
10	F.123

S.M.2024



SEE A.G.S. 100 FOR GENERAL INFORMATION.
B.S.P.E. THREADS TO B.S. SPEC. 2779 MEDIUM FIT TRUNCATED.
WORKING PRESSURE - 3,000 LB/SQ. IN.
FOR GENERAL ARRANGEMENT SEE A.G.S. No. 1110.

REF.	DRAWING OR PART NO.	DESCRIPTION	ALUM. ALLOY	AT. DRWG. HAND UNIT QTY.	L.S.S.	MATERIAL - REMARKS

HT	PT	R.S. NO.	SCALE	LIMITS NOT SHOWN	THIRD ANGLE PROJECTION
		116			

PIPE COUPLINGS (ALUM. ALLOY) FLANGED BULKHEAD CONE UNION BODY 3/16" TO 1/2"

A.G.S. 1111 SHEET 1.

DESIGNED	DRAWN	TRACED	CHECKED	APPROVED FOR	DATE
F.A.C.	F.A.C.	F.A.C.	F.A.C.	S.B.A.C.	27/1/58

ISSUED BY THE SOCIETY OF BRITISH AEROSPACE COMPANIES LTD.,
29, KING STREET, ST. JAMES'S, LONDON, S.W.1.

REFERENCE

SIZE B.3.8-1913

SM2027

ISSUE	1	ALT. No.
	9	F101

MARK	O/D OF PIPE	L	M	N	P	Q	S	T		U	V		W	X	Y	Z	WASHER PLATE A.G.S. 1115.
								FULL THREAD			FULL THREAD						
A	3" / 16	5" / 32	.03"	1-110"	.805"	1-720"	.070"	.510"	.730"	.370"	.230"	.370"	.170"	1" / 8	1		
B	1" / 4	5" / 32	.04"	1-310"	1-005"	1-950"	.090"	.510"	.860"	.400"	.290"	.280"	.234"	1" / 4	2		
BB	5" / 16	5" / 32	.04"	1-510"	1-205"	2-090"	.090"	.560"	.920"	.410"	.330"	.320"	.277"	3" / 16	3		
C	3" / 8	13" / 64	.04"	1-660"	1-305"	2-130"	.090"	.560"	.940"	.430"	.330"	.320"	.343"	1" / 4	4		
CC	7" / 16	13" / 64	.06"	1-760"	1-405"	2-300"	.110"	.610"	1-020"	.480"	.330"	.320"	.387"	5" / 16	5		
D	1" / 2	13" / 64	.06"	1-860"	1-505"	2-340"	.110"	.610"	1-040"	.490"	.330"	.320"	.448"	3" / 8	6		

USED ON																
DESIGNED	DRAWN	TRACED	CHECKED	APPROVED FOR S.B.A.C.	DATE	REF.	DRAWING OR PART No.	DESCRIPTION	SCALE	LIMITS NOT SHOWN	AS DRAWN	OR HAND UNIT	MATERIAL - REMARKS			
	F.A.C.	F.A.C.	F.A.C.	<i>[Signature]</i>	27.1.58			PIPE COUPLINGS. (ALUM ^B ALLOY) FLANGED BULKHEAD CONE UNION BODY 3/16-1/2								

ISSUED BY THE SOCIETY OF BRITISH AIRCRAFT CONSTRUCTORS LTD.,
29, KING STREET, ST. JAMES'S, LONDON, S.W.1.

W.K.C. 1001-6/53

SIZE 8.5" x 11.5"