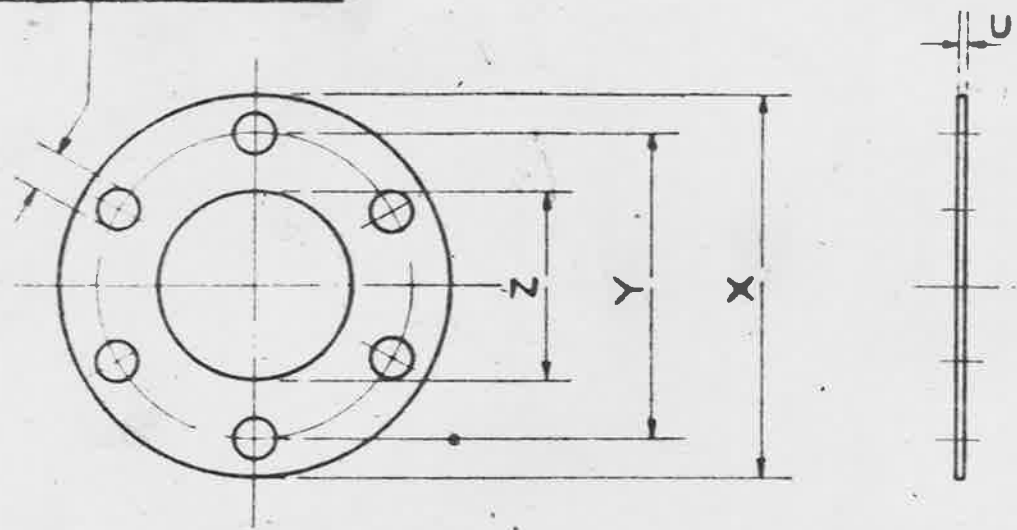


6 HOLES OF 'W' DIA.
EQUALLY SPACED.



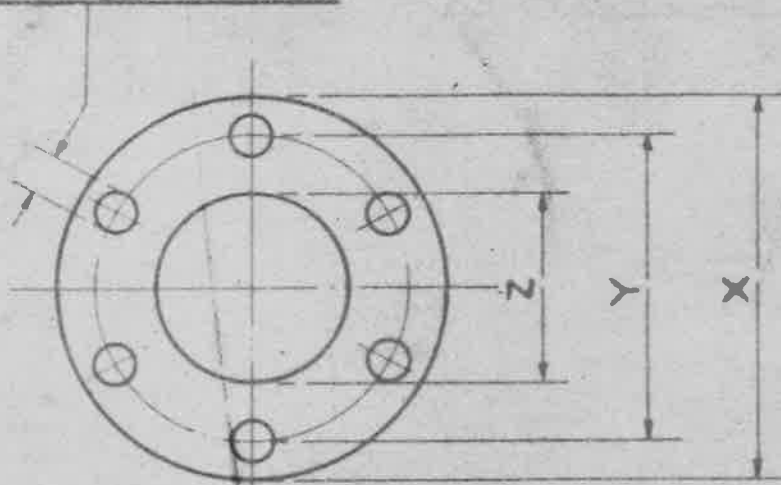
MARK	Z	Y	X	W	U
	±.01'	±.005'	±.01'	DIA. OF DRILL	S.W.G
1	.500'	.80'	1.10'	5/32"	20
2	.687'	1.00'	1.30'	5/32"	20
3	.844'	1.20'	1.50'	5/32"	20
4	.906'	1.30'	1.70'	13/64"	20
5	.968'	1.40'	1.80'	13/64"	20
6	1.062'	1.50'	1.90'	13/64"	20
7	1.156'	1.60'	2.00'	13/64"	18
8	1.250'	1.70'	2.10'	13/64"	18
9	1.437'	1.85'	2.25'	13/64"	18
10	1.625'	2.05'	2.45'	13/64"	18
11	1.75"	2.15"	2.55"	13/64"	18
12	1.687'	2.30'	2.70'	13/64"	18
13	2.125'	2.55'	2.95'	13/64"	18
14	2.375'	2.78'	3.20'	13/64"	18

THE MATERIAL TO BE TO B.S. SPEC. S.3.
(LATEST ISSUE)

FINISH TO BE CADMIUM PLATED TO D.T.O. 904 -
(LATEST ISSUE.)

ISSUED BY DRAWING OFFICE DIRECTORATE OF TECHNICAL DEVELOPMENT MINISTRY OF AIRCRAFT PRODUCTION.	TITLE:- PIPE COUPLINGS, WASHER PLATES FOR FLANGED BULKHEAD FITTINGS				DRAWN ST Reynolds	TRACED PLN 3-11-41
	ISSUE NO	1	2		CHECKED	APPROVED
	ALTER ^N NO	M00 AGS 449	AS/AS 6/ 463		<i>[Signature]</i>	<i>[Signature]</i>

6 HOLES OF "W" DIA.
EQUALLY SPACED.



MARK	Z	Y	X	W	U
	±.01'	±.005'	±.01'	DIA. OF DRILL	SWG
1	.500'	.80'	1.10'	5/32	20
2	.687'	1.00'	1.30'	5/32	20
3	.844'	1.20'	1.50'	5/32	20
4	.906'	1.30'	1.70'	13/64	20
5	.968'	1.40'	1.80'	13/64	20
6	1.062'	1.50'	1.90'	13/64	20
7	1.156'	1.60'	2.00'	13/64	18
8	1.250'	1.70'	2.10'	13/64	18
9	1.437'	1.85'	2.25'	13/64	18
10	1.625'	2.05'	2.45'	13/64	18
11	1.75'	2.15'	2.55'	13/64	18
12	1.687'	2.30'	2.70'	13/64	18
13	2.125'	2.55'	2.95'	13/64	18
14	2.375'	2.78'	3.20'	13/64	18

2 1/2 x 2 1/2 x 18 SWG = 0639/11

THE MATERIAL TO BE TO B.S. SPEC. S.3.
(LATEST ISSUE)

FINISH - TO BE CADMIUM PLATED TO D.T.C 904 -
(LATEST ISSUE)

ISSUED BY DRAWING OFFICE DIRECTORATE OF TECHNICAL DEVELOPMENT MINISTRY OF AIRCRAFT PRODUCTION.	TITLE:- PIPE COUPLINGS, WASHER PLATES FOR FLANGED BULKHEAD FITTINGS			DRAWN CT Reynolds	TRACED PLN 3. 11. 41
	ISSUE NO	1	2	CHECKED J. S. Nair	APPROVED J. S. Nair
ALTER ^N NO	MOD AGS 649	AS/AS 643			

S/M2027

ISSUE	1	ALT. No.
	9	

MARK	O/D OF PIPE	M	N	P	Q	S	T	U	V	W	X		Y	Z
											DRILL DIA	B.S.P.F. THREAD		
A	1 1/16"	.03"	.04"	.06"	.21"	.324"	.32"	.91"	.31"	.23"	1/32"	.170"	1 1/8"	
B	1 1/4"	.04"	.05"	.06"	.26"	.413"	.41"	1.06"	.31"	.29"	5/32"	.234"	1 1/4"	
BB	5/16"	.04"	.06"	.10"	.28"	.445"	.44"	1.16"	.35"	.33"	1/16"	.277"	1 1/8" O/D B.S.84	
C	3/8"	.04"	.06"	.10"	.31"	.525"	.52"	1.26"	.30"	.33"	1/4"	.343"	1 1/8"	
CC	7/16"	.06"	.06"	.10"	.41"	.600"	.60"	1.33"	.40"	.35"	5/16"	.367"	1 1/8" O/D WHIT. B.S.84	
D	1 1/2"	.06"	.08"	.10"	.40"	.710"	.69"	1.38"	.41"	.33"	1 1/8"	.448"	1 1/2"	

USED ON														
DESIGNED	DRAWN	TRACED	CHECKED	APPROVED FOR	DATE	REF.	DRAWING OR PART No.	DESCRIPTION	LIMITS NOT SHOWN	SCALE	HT	PT	AGS 1116 SHEET 2	MATERIAL - REMARKS
	F.A.C.	F.A.C.	F.A.C.	S.B.A.C. <i>K. J. Fisher</i>	27.1.58			PIPE COUPLINGS (ALUMINUM ALLOY) CONE ELBOW 3/16 TO 1/2						

ISSUED BY THE SOCIETY OF BRITISH AIRCRAFT CONSTRUCTORS LTD.,
29, KING STREET, ST. JAMES'S, LONDON, S.W.1.

SIZE B. 5-8" x 13"