

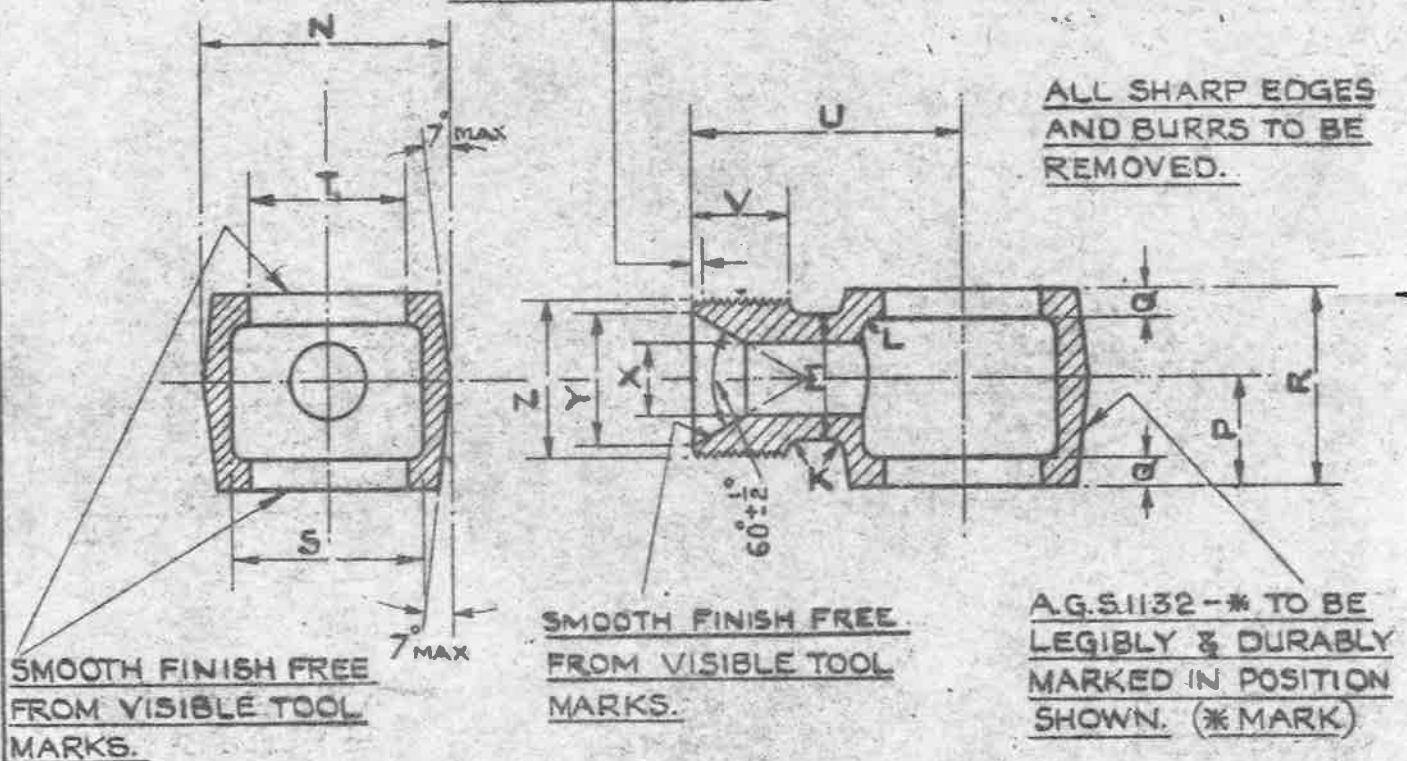
SEE A.G.S. 100 FOR GENERAL INFORMATION.

MINISTRY OF SUPPLY

AGS.No. 1132

SHEET No. 1 No. OF SHEETS 1

30°±2° CHAMFER TO ROOT OF THREAD.



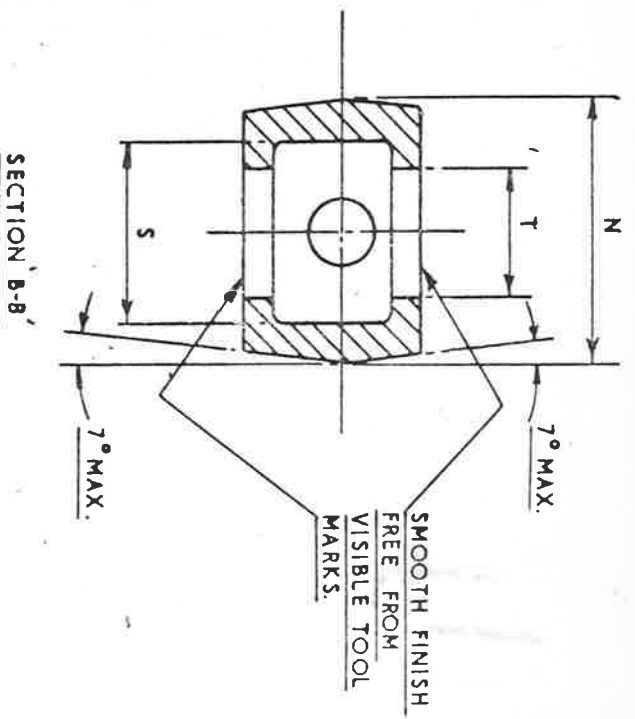
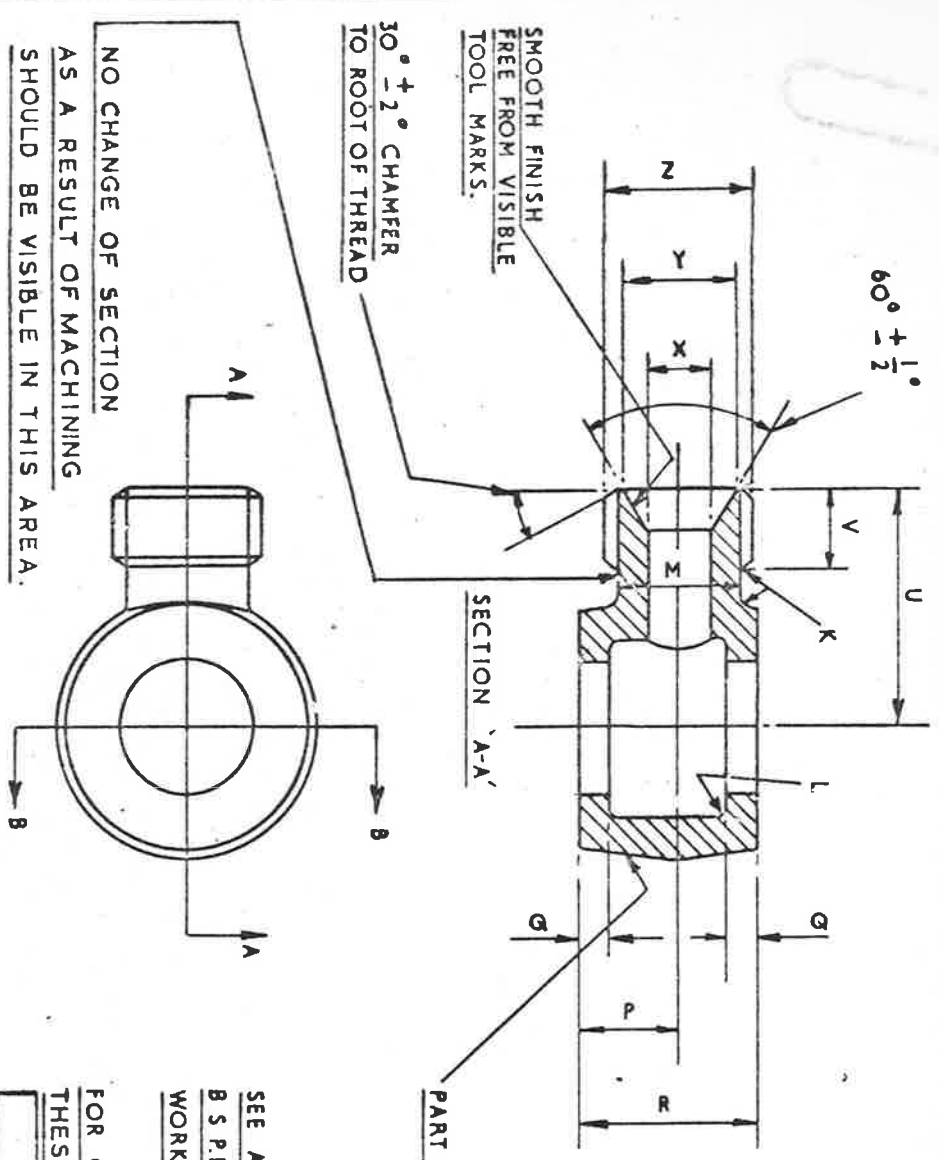
MARK	DIA OF PIPE	Z	Y	X	V	U	T	S	R	Q	P	N	M	L	K
		B.S.P. THREAD:	+ .005 - .005	DIA. DRILL	± .01	± .01	+ .005 + .002	± .01	± .01	± .8"	± .8"	± .8"	± .8"		
A	3/16"	1/8"	.295"	3/32"	.35"	.87"	.383"	.50"	.50"	.10"	.29"	.75"	.28"	.06"	.06"
B	1/4"	1/4"	.410"	5/32"	.35"	1.00"	.518"	.65"	.60"	.10"	.35"	.90"	.37"	.06"	.06"
BB	5/16"	19 T.P.I. -60°/DIA	.480"	3/16"	.40"	1.10"	.600"	.75"	.70"	.12"	.44"	1.00"	.40"	.06"	.06"
C	3/8"	3/8"	.550"	1/4"	.40"	1.15"	.656"	.80"	.80"	.12"	.47"	1.10"	.48"	.06"	.06"
CC	7/16"	14 T.P.I. -75°/DIA	.600"	5/16"	.45"	1.30"	.750"	.90"	.90"	.15"	.52"	1.20"	.56"	.06"	.06"
D	1/2"	1/2"	.690"	3/8"	.50"	1.40"	.825"	1.00"	1.00"	.15"	.56"	1.30"	.65"	.06"	.06"
E	5/8"	5/8"	.760"	1/2"	.55"	1.58"	.902"	1.20"	1.10"	.15"	.62"	1.55"	.77"	.10"	.06"
F	3/4"	3/4"	.900"	5/8"	.61"	1.79"	1.041"	1.45"	1.25"	.20"	.70"	1.85"	.91"	.10"	.06"
G	7/8"	7/8"	1.040"	3/4"	.65"	1.93"	1.189"	1.65"	1.40"	.20"	.80"	2.05"	1.06"	.10"	.06"
H	1"	1"	1.130"	7/8"	.65"	2.05"	1.309"	1.75"	1.65"	.20"	.95"	2.20"	1.15"	.10"	.06"

MATERIAL:- LIGHT ALLOY TO D.T.D. 423 (LATEST ISSUE)  
 FINISH:- ANODISE TO SPEC. D.T.D. 910 (LATEST ISSUE)  
 NOTES:- SCREW THREADS TO B.S. SPEC. 84 (LATEST ISSUE) MEDIUM FIT, TRUNCATED. FOR DIAMETERS, TOLERANCES & TRUNCATED DIMENSIONS OF MARKS BB & CC SEE A.G.S. 100 SHEET 5.

FOR GENERAL ARRANGEMENT, SEE A.G.S. No 1128 (SHEETS 2).

WORKING PRESSURE :- 3000 LB/SQ. IN. FOR SIZES UP TO 1/2" B.S.P.  
 500 LB/SQ. IN. FOR SIZES 5/8" TO 1" B.S.P.

ISSUED BY ROYAL AIRCRAFT ESTABLISHMENT	TITLE:- PIPE COUPLINGS (LIGHT ALLOY). SINGLE END UNION BANJO BODY (3/16" TO 1").			DRAWN C.T. Reynolds	TRACED P.W. 4/10/41
	ISSUE No	8	7	7	CHECKED J.D. [Signature]
	ALTER-N No	AS/AGS 969	AS/ACS 988	SM 858	APPROVED [Signature] 14. 11. 41



SEE A.G.S. 1100 FOR GENERAL INFORMATION.  
 B.S.P.F. THREADS TO B.S. SPEC. 2779 MEDIUM FIT TRUNCATED.  
 WORKING PRESSURE: 3000 LB./SQ. IN. FOR SIZES UP TO 1/2" B.S.P.F.  
 : 500 LB./SQ. IN. FOR SIZES 5/8" TO 1" B.S.P.F.  
 FOR GENERAL ARRANGEMENT SEE A.G.S. 1128 SHEET 4.  
 THESE FITTINGS SHOULD NOT BE USED IN AREAS OF HIGH PRESSURE IMPULSES

USED ON					
DESIGNED	DRAWN	TRACED	CHECKED	APPROVED FOR	DATE
	F.A.C.	F.A.C.	F.A.C.	3 B.A.C. <i>[Signature]</i>	27.1.58

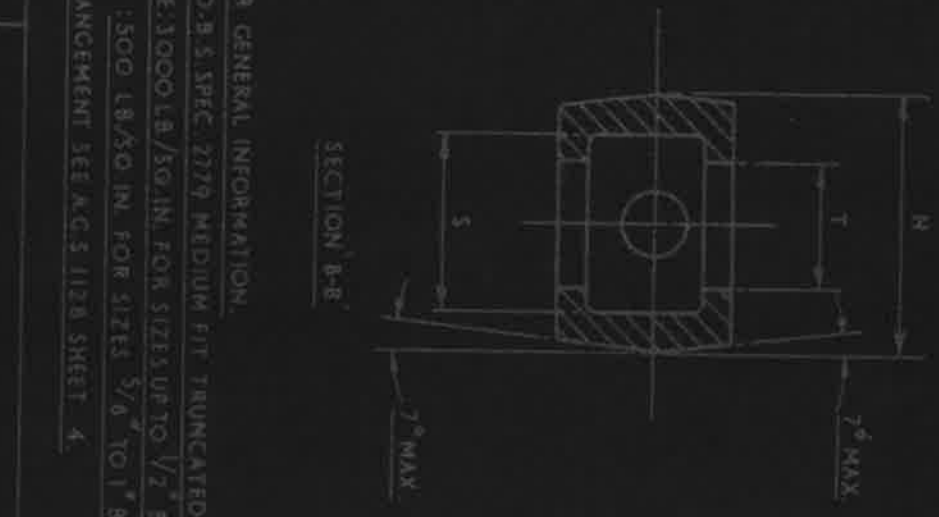
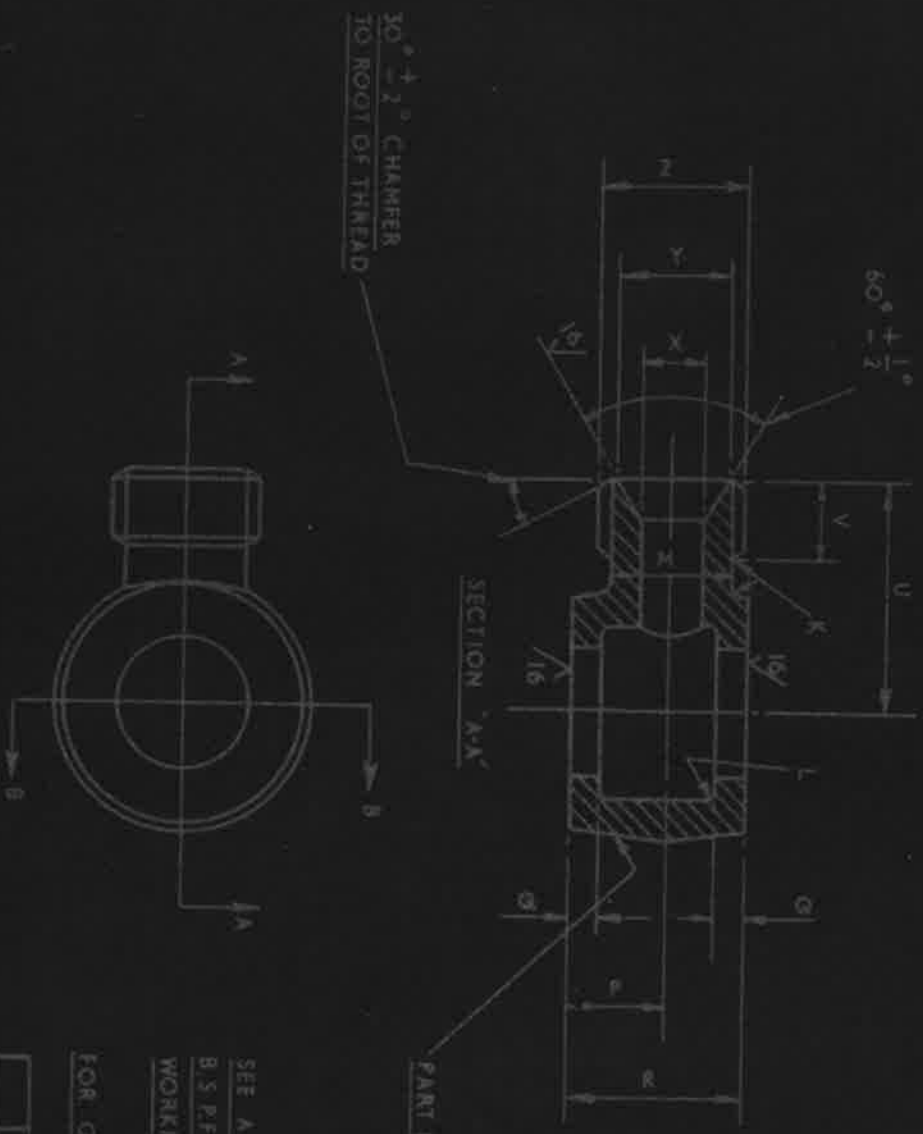
ISSUED BY THE SOCIETY OF BRITISH AEROSPACE COMPANIES LTD.,  
 29, KING STREET, ST. JAMES'S, LONDON, S.W.1.

REF.	DRAWING OR PART No.	DESCRIPTION	R.S. 116 NO. PAINT	SCALE	LIMITS NOT SHOWN
		ALUMINUM ALLOY			
		PIPE COUPLINGS (ALUMINUM ALLOY) SINGLE END UNION BANJO BODY 3/16" TO 1"			

THIRD ANGLE PROJECTION

A.G.S. 1132 - SHEET 1

ISSUE	ALT. No.
9	F.2.
10	F.46.
11	F.96.
12	E.101.
13	E.123.
14	E.130.
15	F.156.
	1/4/68



SEE A.G.S. 100 FOR GENERAL INFORMATION.  
 B.S.P.F. THREADS TO B.S. SPEC. 2779 MEDIUM FIT TRUNCATED.  
 WORKING PRESSURE: 3000 LB./SQ. IN. FOR SIZES UP TO 1/2" B.S.P.F.  
 1500 LB./SQ. IN. FOR SIZES 5/8" TO 1" B.S.P.F.  
 FOR GENERAL ARRANGEMENT SEE A.G.S. 1128 SHEET 4.

ISSUE	ALT. NO.
9	F 2.
10	F46
11	F96
12	E101.
13	E123

SM2024

DESIGNED	DRAWN	TRACED	CHECKED	APPROVED FOR	DATE
	F.A.C.	F.A.C.	F.A.C.	<i>[Signature]</i>	27/1/58

REP.	DRAWING OR PART No.	DESCRIPTION	UNITS NOT SHOWN	ALT. NO.	DATE	MATERIAL	REMARKS
		ALUMINUM ALLOY				L. 85.	

HT PT R.S. 116 SCALE LIMITS NOT SHOWN  
 PIPE COUPLINGS (ALUMINUM ALLOY) SINGLE END  
 UNION BANJO BODY 3/16" TO 1"  
 THIRD ANGLE PROJECTION  
 A.G.S. 1132 - SHEET 1

ISSUED BY THE SOCIETY OF BRITISH AEROSPACE COMPANIES LTD.,  
 29, KING STREET, ST. JAMES'S, LONDON, S.W. 1.

AGS. 1132 SM. 2.

MATERIAL	Z	B.S.P.F. THREAD	X	Y	U	T	S	R	Q	P	N	M	L	K	O/D OF PIPE	AGS. 1132 SM. 2.		
																DRILL DIA.	DIA.	
18 TPI. .60" O.D. WHIT (AS. 94)	1"	4	.405	.415	.340	.360	.340	.360	.340	.360	.340	.360	.340	.360	.340	.360	A	5/16"
14 TPI. .75" O.D. WHIT (AS. 94)	1 1/8"	32	.290	.300	.240	.260	.240	.260	.240	.260	.240	.260	.240	.260	.240	.260	BB	5/16"
	1 1/4"	32	.405	.415	.340	.360	.340	.360	.340	.360	.340	.360	.340	.360	.340	.360	B	1/4"
	1 1/2"	24	.545	.555	.410	.430	.410	.430	.410	.430	.410	.430	.410	.430	.410	.430	BB	5/8"
	1 3/8"	16	.475	.485	.390	.410	.390	.410	.390	.410	.390	.410	.390	.410	.390	.410	C	3/8"
	1 3/4"	16	.595	.605	.440	.460	.440	.460	.440	.460	.440	.460	.440	.460	.440	.460	C	3/4"
	1 7/8"	16	.685	.695	.510	.530	.510	.530	.510	.530	.510	.530	.510	.530	.510	.530	CC	7/16"
	2"	8	.685	.695	.490	.510	.490	.510	.490	.510	.490	.510	.490	.510	.490	.510	D	1/2"
	2 1/8"	8	.755	.765	.540	.560	.540	.560	.540	.560	.540	.560	.540	.560	.540	.560	E	5/8"
	2 1/4"	4	.895	.905	.600	.620	.600	.620	.600	.620	.600	.620	.600	.620	.600	.620	F	3/4"
	2 3/8"	4	1.035	1.045	.660	.680	.660	.680	.660	.680	.660	.680	.660	.680	.660	.680	G	7/8"
	2 1/2"	8	1.125	1.135	.660	.680	.660	.680	.660	.680	.660	.680	.660	.680	.660	.680	H	1"

DESIGNED BY THE SOCIETY OF ENGINEERS ASSOCIATED WITH THE INSTITUTION OF MECHANICAL ENGINEERS, LONDON, W. 1.  
 DRAWING ON PART No. \_\_\_\_\_  
 SCALE \_\_\_\_\_  
 DESCRIPTION PIPE COUPLING (ALUMINUM) SINGLE END UNION BMAO BODY 3/16 TO 1"  
 DATE 27.1.57  
 CHECKED BY K. S. / J. W. / J. W.  
 DRAWN BY F. A. C. / F. A. C.  
 HT PT  
 AGS. 1132 SHEET 2.