

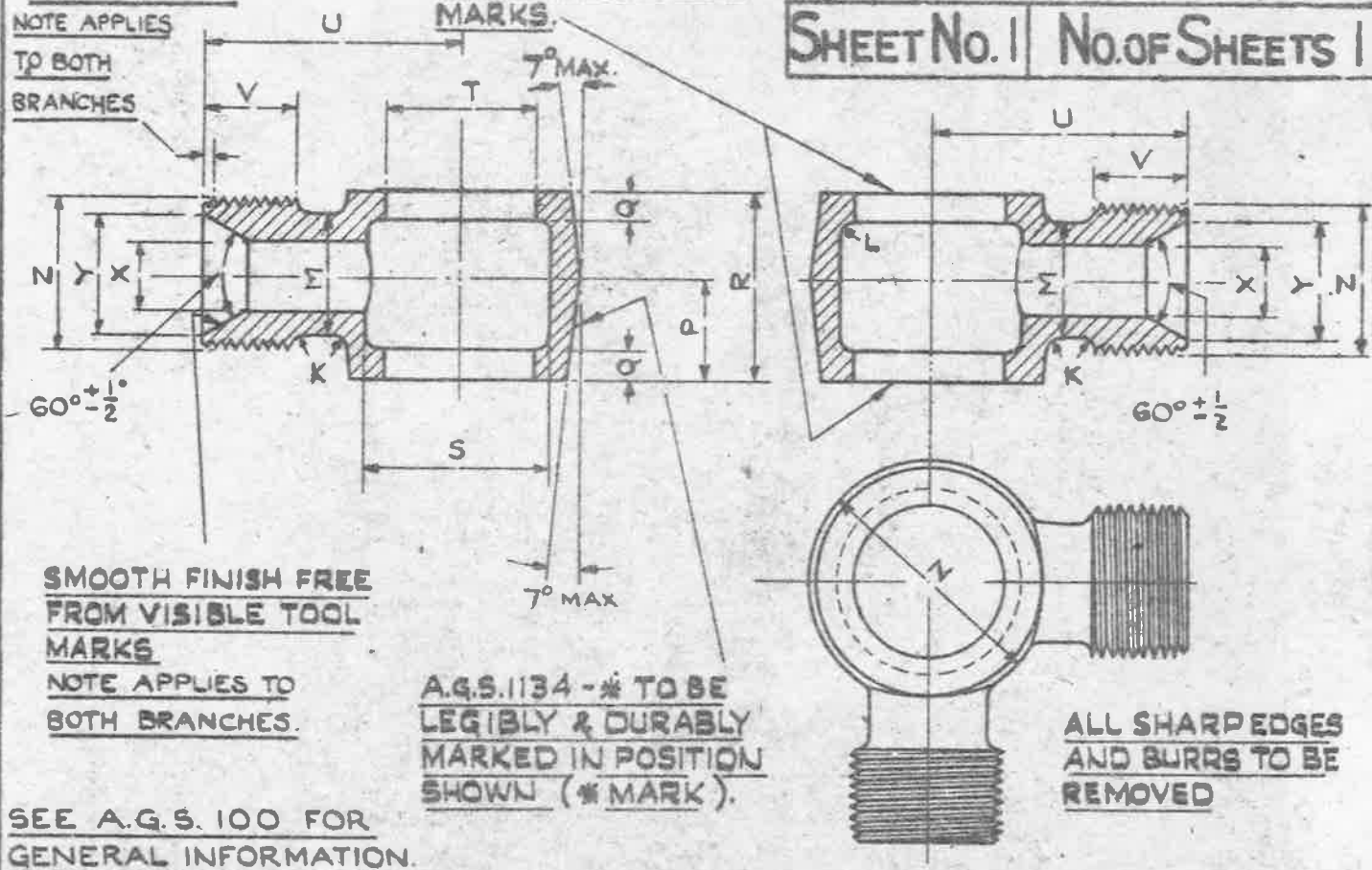
30°±2° CHAMFER TO
ROOT OF THREAD

SMOOTH FINISH FREE
FROM VISIBLE TOOL
MARKS.

MINISTRY OF
SUPPLY

AGS.No. | 134.

SHEET No. | No. OF SHEETS |



SEE A.G.S. 100 FOR
GENERAL INFORMATION.

A.G.S. 1134 - * TO BE
LEGIBLY & DURABLY
MARKED IN POSITION
SHOWN (* MARK).

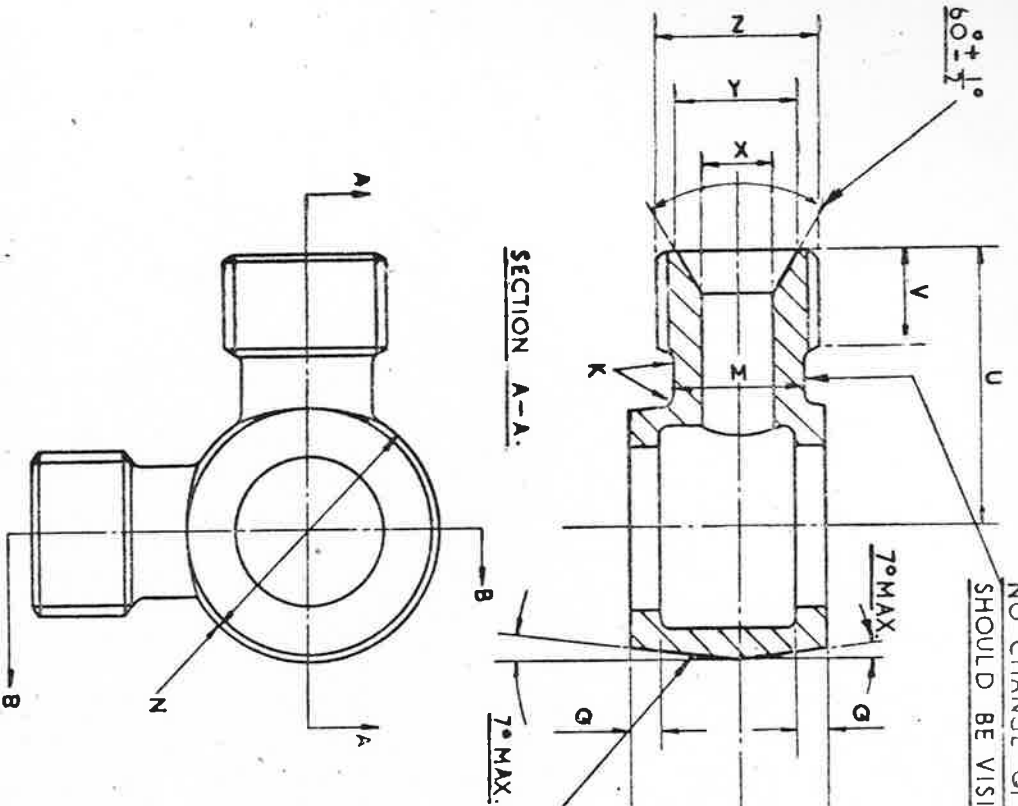
ALL SHARP EDGES
AND BURRS TO BE
REMOVED

MARK	DIA OF PIPE	Z	Y	X	V	U	T	S	R	Q	P	N	M	L	K
		B.S.P. THREAD	+0.005	DIA. DRILL	±.01"	±.01"	+0.005	±.01"	±.01"	+0.01"	+0.01"	±.04"	±.04"		
A	3/16"	1/8"	.295"	3/32"	.35"	.87"	.383"	.50"	.50"	.10"	.29"	.75"	.28"	.06"	.06"
B	1/4"	1/4"	.410"	5/32"	.35"	1.00"	.518"	.65"	.60"	.10"	.35"	.90"	.37"	.06"	.06"
BB	5/16"	19 T.P.I. 60°/DIA	.480"	3/16"	.40"	1.10"	.600"	.75"	.70"	.12"	.44"	1.00"	.40"	.06"	.06"
C	3/8"	3/8"	.550"	1/4"	.40"	1.15"	.656"	.80"	.80"	.12"	.47"	1.10"	.48"	.06"	.06"
CC	7/16"	14 T.P.I. 75°/DIA	.600"	5/16"	.45"	1.30"	.750"	.90"	.90"	.15"	.52"	1.20"	.56"	.06"	.06"
D	1/2"	1/2"	.690"	3/8"	.50"	1.40"	.825"	1.00"	1.00"	.15"	.56"	1.30"	.65"	.06"	.06"
E	5/8"	5/8"	.760"	1/2"	.55"	1.58"	.902"	1.20"	1.10"	.15"	.62"	1.55"	.77"	.10"	.06"
F	3/4"	3/4"	.900"	5/8"	.61"	1.79"	1.041"	1.45"	1.25"	.20"	.70"	1.85"	.91"	.10"	.06"
G	7/8"	7/8"	1.040"	3/4"	.65"	1.93"	1.189"	1.65"	1.40"	.20"	.80"	2.05"	1.06"	.10"	.06"
H	1"	1"	1.130"	7/8"	.65"	2.05"	1.309"	1.75"	1.65"	.20"	.95"	2.20"	1.15"	.10"	.06"

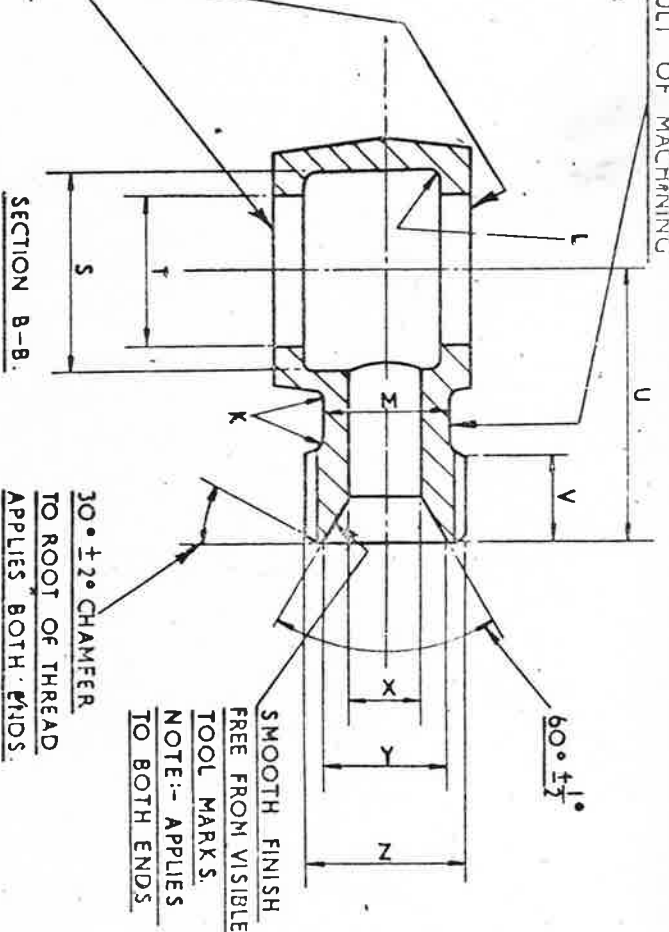
MATERIAL:- LIGHT ALLOY TO D.T.D. 423 (LATEST ISSUE).
FINISH:- ANODISE TO SPEC. D.T.D. 910 (LATEST ISSUE).
NOTES:- SCREW THREADS TO B.S. SPEC. 84 (LATEST ISSUE) MEDIUM FIT, TRUNCATED. FOR DIAMETERS, TOLERANCES & TRUNCATED DIMENSIONS OF MARKS BB & CC SEE A.G.S. 100 SHEET 5.
 FOR GENERAL ARRANGEMENT SEE A.G.S. NO 1128 (SHEET 2)
WORKING PRESSURES:- 3,000 LB/SQ. IN FOR SIZES UP TO 1/2" B.S.P.
 500 LB/SQ. IN. FOR SIZES 5/8" TO 1" B.S.P.

ISSUED BY ROYAL AIRCRAFT ESTABLISHMENT	TITLE:- PIPE COUPLINGS. (LIGHT ALLOY). DOUBLE R.A. UNION BANJO BODY (3/8" TO 1")				DRAWN C.T. Reynolds	TRACED H.W. 4-10-41.
	ISSUE NO 8	7	7		CHECKED J.S. Beacher	APPROVED G.P.W. 14/11/41.
	ALTER. NO AS/ACS 969	AS/ACS 988	SM 856			

NO CHANGE OF SECTION AS A RESULT OF MACHINING SHOULD BE VISIBLE IN THIS AREA.



SMOOTH FINISH FREE FROM VISIBLE TOOL MARKS.



30° ± 2° CHAMFER TO ROOT OF THREAD APPLIES BOTH ENDS.

SMOOTH FINISH FREE FROM VISIBLE TOOL MARKS. NOTE:- APPLIES TO BOTH ENDS.

SEE A.G.S. 100 FOR GENERAL INFORMATION.
 B S P.F. SCREW THREADS TO B.S. SPEC. 2779. MEDIUM FIT TRUNCATED.
 FOR GENERAL ARRANGEMENT SEE A.G.S. 1128. SHEET. 6.
 WORKING PRESSURE: 3000 LB./SQ. IN. FOR SIZES UP TO 1/2" B.S.P.F.
 : 500 LB./SQ. IN. FOR SIZES 5/8" TO 1" B.S.P.F.

THESE FITTINGS SHOULD NOT BE USED IN AREAS OF HIGH PRESSURE IMPULSES

USED ON	
---------	--

DESIGNED	DRAWN	TRACED	CHECKED	APPROVED FOR	DATE
	F.A.C.	F.A.C.	F.A.C.	S.B.A.C. <i>H.S. Palmer</i>	12.2.58

ISSUED BY THE SOCIETY OF BRITISH AEROSPACE COMPANIES LTD.,
 29, KING STREET, ST. JAMES'S, LONDON, S.W.1.

REF.	DRAWING OR PART NO.	DESCRIPTION	ALUMINUM ALLOY
HT	PT	R.S. 116 SCALE	LIMITS NOT SHOWN
PIPE COUPLINGS ALUMINUM ALLOY) DOUBLE R.A. UNICN BAND BODY 3/16" TO 1"			

THIRD ANGLE PROJECTION	AGS. 1134. SHEET 1.
------------------------	---------------------

ISSUE	ALT. No.
9	F.2
10	F.46
11	F.98
12	F.100
13	F.12
14	F.12
15	F.15



SEE A & B FOR GENERAL INFORMATION
 B & C FOR GENERAL INFORMATION
 B & C FOR GENERAL INFORMATION
 B & C FOR GENERAL INFORMATION

USED ON	DESIGNED	DRAWN	TAGGED	CHANGED	APPROVED	DATE	HT	PT	HT	PT	HT	PT	HT	PT

ISSUED BY THE SOCIETY OF BRITISH ENGINEERS COMPANY LIMITED
 25 KING STREET ST. JAMES'S, LONDON, S.W. 1

SCALE	MT
9	1.2
10	1.5
11	2.0
12	2.5
13	3.0

SM2027

REV	DATE	BY
1		
2	12/27	
12	12/27	

M A R K	O/D OF PIPE	K RAD	L RAD	M	N DIA.	P	O	R	S	T	U	V	X DRILL DIA.	Y	Z BS.P.F. THREAD
A	1/8"	.060"	.060"	.320"	.790"	.300"	.110"	.510"	.510"	.388"	.880"	.360"	3/32"	.300"	1"
B	1/4"	.060"	.060"	.410"	.940"	.360"	.110"	.610"	.660"	.525"	1.010"	.360"	5/32"	.415"	1"
B-B	1/8"	.060"	.060"	.440"	.990"	.450"	.130"	.710"	.760"	.605"	1.110"	.410"	3/16"	.485"	19 T.P.L. 1/8" (1/8")
C	3/8"	.060"	.060"	.520"	1.140"	.480"	.130"	.810"	.810"	.661"	1.160"	.410"	1/4"	.555"	3/8"
C-C	1/16"	.060"	.060"	.600"	1.240"	.530"	.160"	.910"	.910"	.658"	1.140"	.590"	1/4"	.545"	3/8"
D	1/2"	.060"	.060"	.690"	1.340"	.570"	.160"	1.010"	.910"	.755"	1.310"	.460"	5/16"	.605"	1 1/2 T.P.L. 1/2" (1/2")
E	3/8"	.060"	.100"	.810"	1.590"	.630"	.160"	1.110"	.907"	.830"	1.410"	.510"	3/8"	.685"	1/2"
F	1/4"	.060"	.100"	.950"	1.890"	.710"	.210"	1.260"	1.046"	.904"	1.570"	.540"	1/2"	.765"	3/8"
G	7/8"	.060"	.100"	1.100"	2.090"	.810"	.210"	1.410"	1.660"	1.194"	1.940"	.660"	3/4"	1.045"	7/8"
H	1"	.060"	.100"	1.190"	2.240"	.860"	.200"	1.590"	1.640"	1.191"	1.920"	.640"	3/4"	1.055"	7/8"
				1.140"	2.190"	.950"	.210"	1.660"	1.740"	1.311"	2.040"	.640"	3/8"	1.125"	1"

DESIGNED BY THE SOCIETY OF STEEL FABRICATORS AND CONSTRUCTORS LTD.
 28, GERRARD STREET, ST. LOUIS, LOUISIANA, U.S.A.

HT PT

DESCRIPTION: PIPE COUPLING (ALL DIA. AT QTY) DOUBLE END TO 1" UNION BANGS BODY 3/16

MATERIAL - STEEL

A.G.S. 1134-SHEET 2