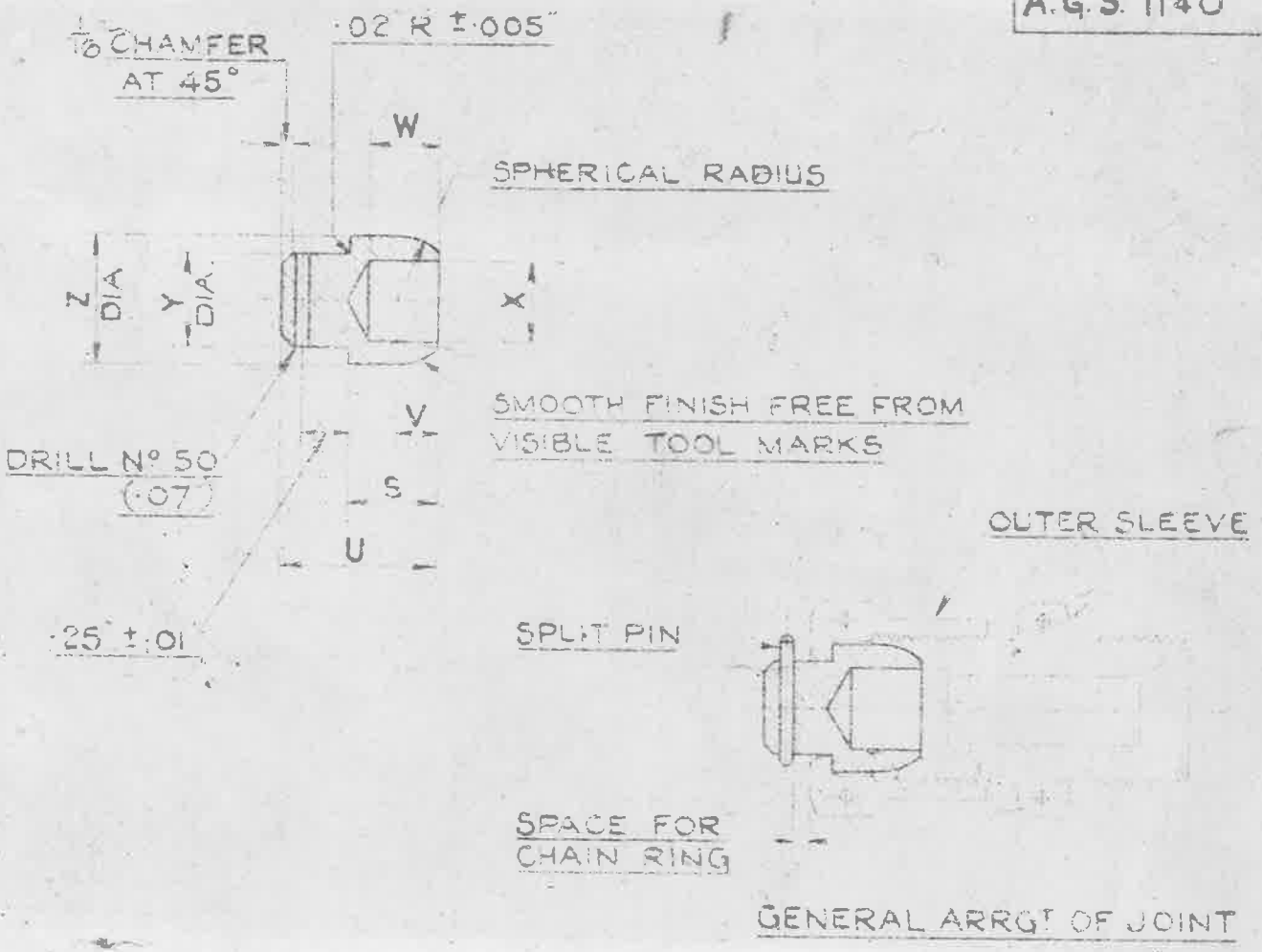


(P)

8 x 13

A.G.S. 1140



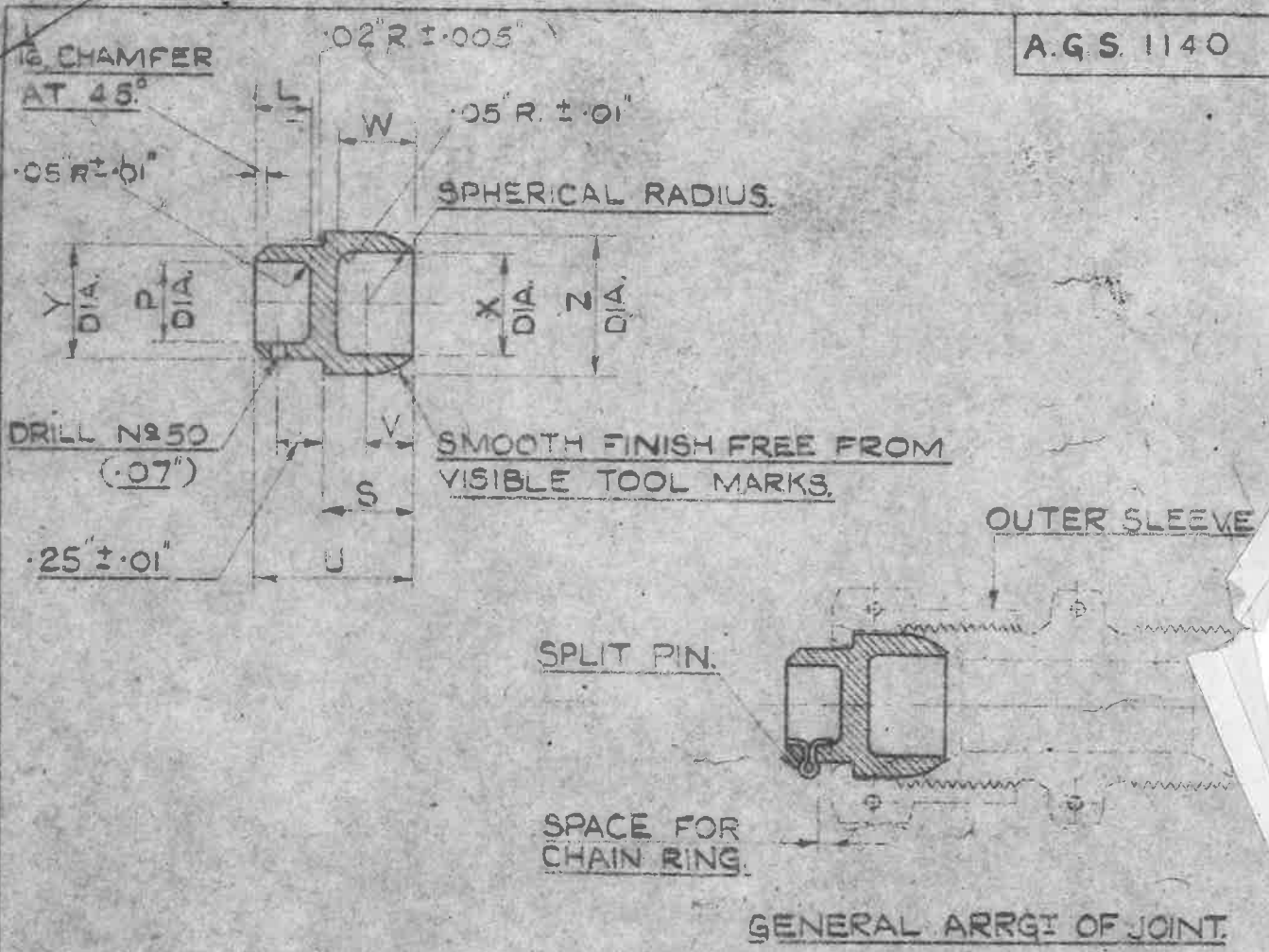
M A R K	USED WITH B.S.P. THREAD	Z ±.01"	Y ±.01"	X DRILL DIA.	W ±.01"	V +.01 - 0	U ±.01"	S ±.01"	ITEMS REQD TO COMPLETE JOINT
A	1/8"	30	19	9/64"	.250	.11	.70	.33	A.G.S. 904/A SP.9.C5
B	1/4"	40	25	7/32"	.375	.14	.86	.49	A.G.S. 904/B SP.9.C6
BB	19 T.P.I. 60% 60%	49	31	9/32"	.375	.19	.85	.48	A.G.S. 904/BB SP.9.C6
C	3/8"	55	37	11/32"	.375	.19	.91	.54	A.G.S. 904/C SP.9.C6
CC	14 T.P.I. 75% 75%	61	44	3/8"	.375	.21	.91	.54	A.G.S. 904/CC SP.9.C8
D	1/2"	69	50	7/16"	.375	.22	.85	.48	A.G.S. 904/D SP.9.C8

MATERIAL - LIGHT ALLOY TO SPEC. D.T.D. 423 (LATEST ISSUE)

FINISH - ANODISED TO SPEC. D.T.D. 910 (LATEST ISSUE)

WORKING PRESSURE - 3,000 LB/SQ. IN. FOR SIZES UP TO 1/2" B.S.P.

TITLE:- PIPE COUPLINGS NIPPLE PLUGS (3/16" TO 1/2")		ISSUE	4						
		ALT. NO.	Mod No AGS/77c						
MINISTRY OF SUPPLY		R.A.E. APPROVAL			A.D. S.A.E. APPROVAL				
APPLICATIONS FOR A.G.S. SHEETS TO:- A.T.P.4A. THAMES HOUSE, MILLBANK, S.W.1.		SIGNATURE		DATE		SIGNATURE		DATE	
		<i>A. Skelton</i>		2.5.49		<i>G. J. Taylor</i>		8/8/49	
GENERAL INQUIRIES TO:- A.D. S.A.E. THAMES HOUSE, MILLBANK, S.W.1.		SHEET N°		1		A.G.S. N° 1140			
		N° OF SHEETS		2					



M A R K	USED WITH B.S.P. THREAD	Z	Y	X	W	V	U	S	P	L	ITEMS REQD TO COMPLETE JOINT	
		±.01"	±.01"	±.01"	±.01"	+0 -.01"	±.01"	±.01"	±.01"	+0 -.01"	OUTER SLEEVE	SPLIT PIN BS. SPEC.
E	5/8"	.78"	.62"	.562"	.42"	.26"	.87"	.50"	.437"	.30"	A.G.S. 904/E	SP.9.C5
F	3/4"	.92"	.75"	.672"	.42"	.30"	.87"	.50"	.531"	.30"	A.G.S. 904/F	SP.9.C5
G	7/8"	1.06"	.87"	.812"	.42"	.32"	.87"	.50"	.656"	.30"	A.G.S. 904/G	SP.9.C5
H	1"	1.16"	1.00"	.844"	.42"	.36"	.87"	.50"	.750"	.30"	A.G.S. 904/H	SP.8.C5
J	1 1/4"	1.50"	1.25"	1.125"	.42"	.44"	.87"	.50"	1.000"	.30"	A.G.S. 904/J	SP.9.C5
K	1 1/2"	1.73"	1.50"	1.400"	.65"	.50"	1.10"	.73"	1.250"	.30"	A.G.S. 904/K	SP.9.C5

MATERIAL:- LIGHT ALLOY TO SPEC: D.T.D. 423 (LATEST ISSUE).

FINISH:- ANODISED TO SPEC: D.T.D. 910 (LATEST ISSUE)

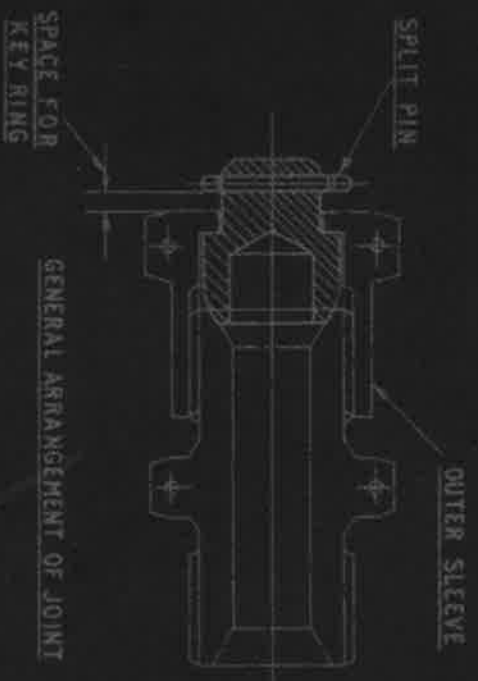
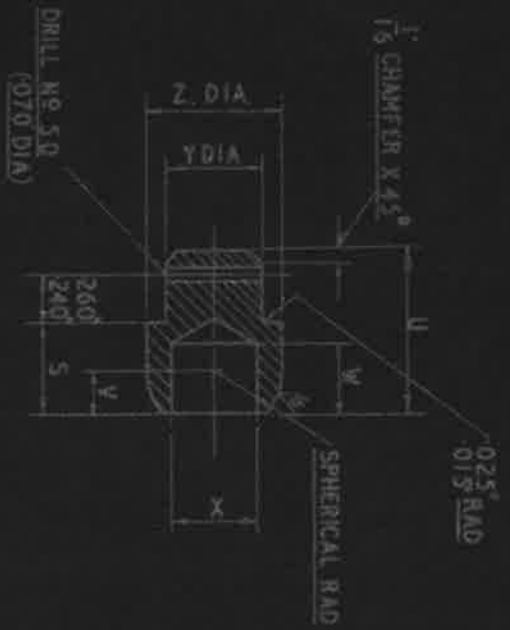
WORKING PRESSURE:- 500 LB./SQ. IN. FOR SIZES 5/8" TO 1" B.S.P.  
200 LB./SQ. IN. FOR SIZES 1 1/4" & 1 1/2" B.S.P.

TITLE:- PIPE COUPLINGS NIPPLE PLUGS (5/8" TO 1 1/2")		ISSUE	1						
		ALT. N°	MOD. N°	AGS/770					
MINISTRY OF SUPPLY		R.A.E. APPROVAL			AD. S.A.E. APPROVAL				
APPLICATIONS FOR A.G.S. SHEETS TO: ATP4A, THAMES HOUSE, MILLBANK, S.W.1.		SIGNATURE	DATE	SIGNATURE	DATE				
GENERAL INQUIRIES TO:- AD. S.A.E. THAMES HOUSE, MILLBANK, S.W.1.		SHEET N° 2		2.6.49		G.T. ...		8/8/49	
		N° OF SHEETS 2		A.G.S. N° 1140					

A.G.S. 1140-SHEET 1

542024

6	R. 2
7	R. 3
8	R. 4
9	R. 5
10	R. 6



M A R K	USED WITH BS RE THREAD	S	U	V	W	X DRILL DIA	Y	Z	ITEMS REQD TO COMPLETE JOINT	
									OUTER SLEEVE	SPLIT PIN RESPEC.
A	1" / 8	340"	710"	120"	260"	9" / 64	200"	310"	A.G.S.	SP9C.S.
B	1" / 4	500"	870"	150"	365"	7" / 32	260"	410"	A.G.S.	SP9C.D.
B-B	1/2" / 16	490"	860"	200"	385"	9" / 32	320"	500"	A.G.S.	SP9C.D.
C	3/8	550"	920"	200"	385"	11" / 32	380"	560"	A.G.S.	SP9C.D.
C-C	1/2" / 16	530"	900"	190"	365"	52	360"	540"	904/C	SP9C.D.
D	1" / 2	490"	860"	230"	385"	7" / 16	510"	700"	A.G.S.	SP9C.B.

WORKING PRESSURE 3000 LB. SQ. IN.

HT	PT	ACUPLY ALLOY	RESPEC.	RESPEC.
HT	PT	ACUPLY ALLOY	RESPEC.	RESPEC.

DESIGNED BY THE PROPERTY OF BRITISH AEROSPACE COMPONENTS LTD.  
18 KING STREET, EXETER, DEVON, ENGL.

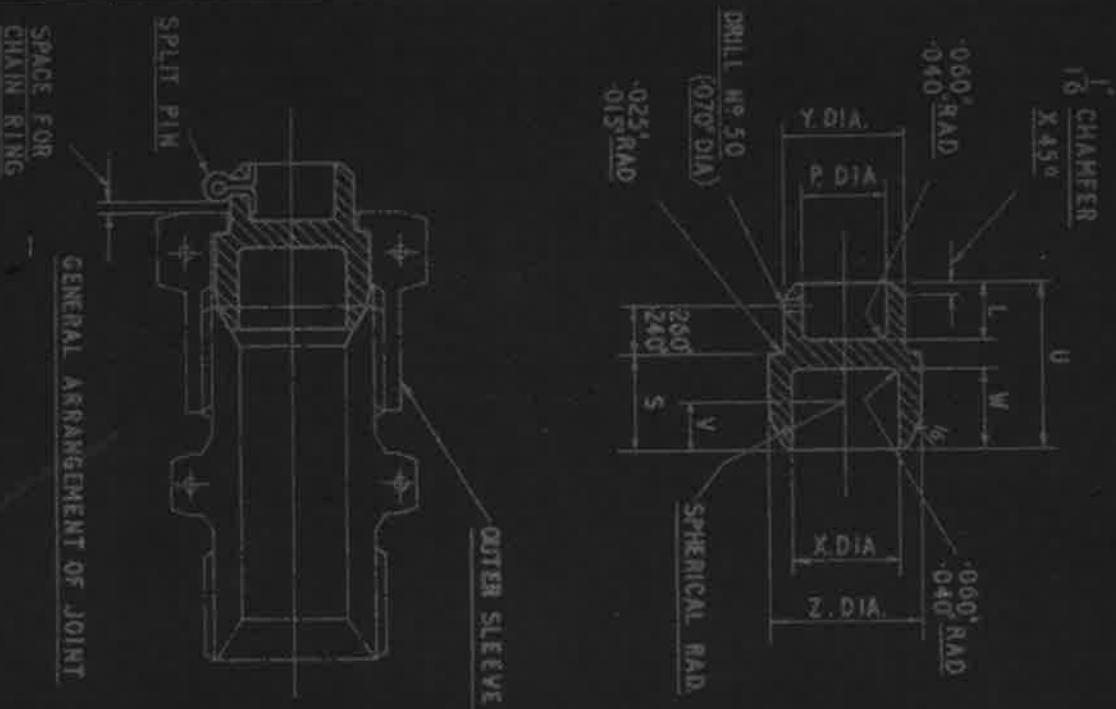
HT

PT

A.G.S. 1140-SHEET 1

SM2824

AGS 1140-SHEET 2



GENERAL ARRANGEMENT OF JOINT

ITEMS REQ. TO COMPLETE JOINT	L	P	S	U	V	W	X	Y	Z	MATERIAL	ITEMS REQ. TO COMPLETE JOINT
M A R K										USED WITH B.S.P.F. THIRD	
E	300"	447"	510"	880"	260"	430"	572"	630"	790"	A.G.S.	S.P.
F	300"	541"	510"	880"	300"	430"	682"	760"	930"	A.G.S.	S.P.
G	300"	666"	510"	880"	320"	430"	822"	880"	1070"	A.G.S.	S.P.
H	300"	760"	310"	880"	360"	430"	854"	1010"	1170"	A.G.S.	S.P.
J	300"	990"	490"	860"	350"	410"	854"	990"	1150"	A.G.S.	S.P.
K	300"	1240"	740"	1110"	500"	660"	1410"	1510"	1740"	A.G.S.	S.P.

WORKING PRESSURE: 500 LB/SQ. IN. FOR SIZES 3/8" TO 1" B.S.P.F.  
200 LB/SQ. IN. FOR SIZES 1 1/4" AND 1 1/2" B.S.P.F.

HT	PT	ALUMINUM ALLOY	STEEL

AGS 1140-SHEET 2

AGS 1140-SHEET 2