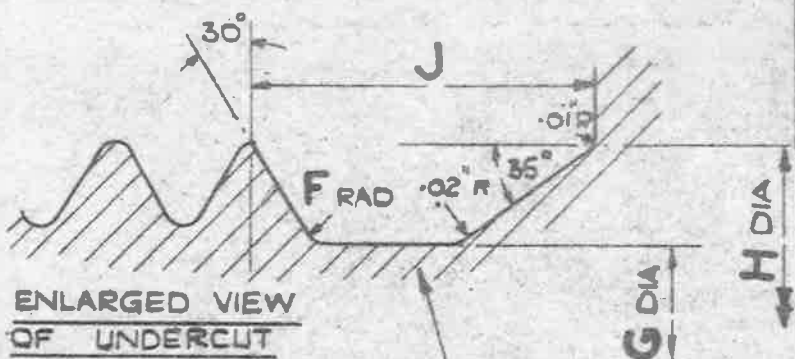
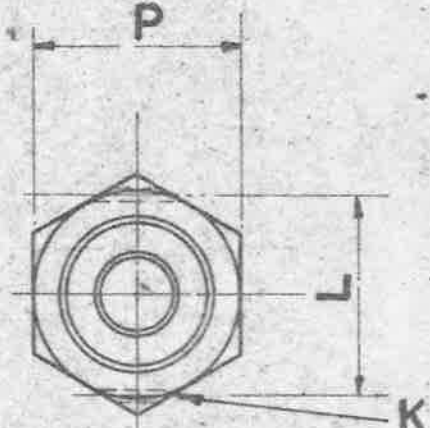
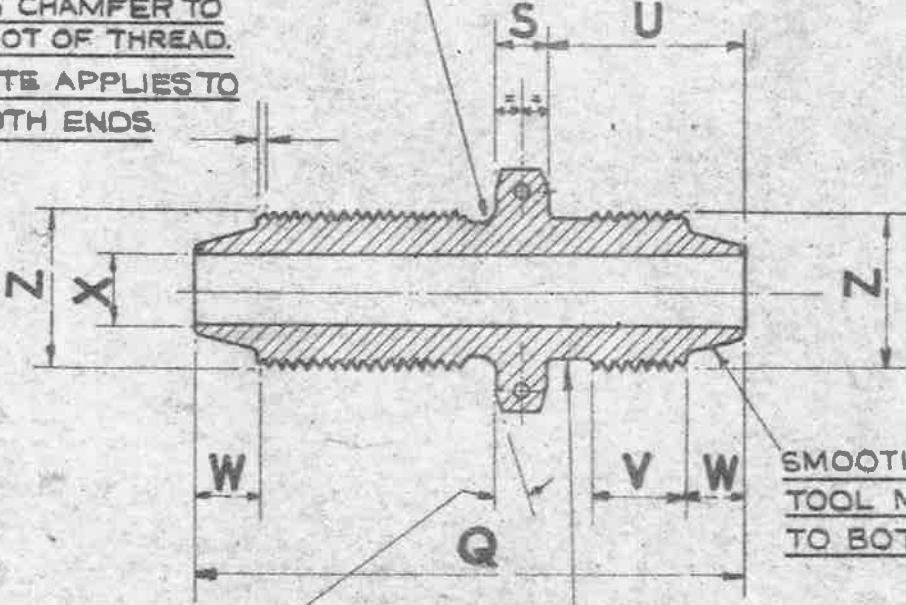


SEE A.G.S. 100 FOR GENERAL INFORMATION.



ENLARGED VIEW OF UNDERCUT

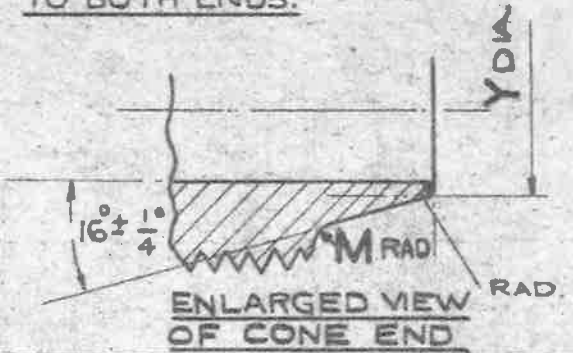
45° CHAMFER TO ROOT OF THREAD.
NOTE APPLIES TO BOTH ENDS.



SMOOTH FINISH FREE FROM TOOL MARKS. NOTE APPLIES TO BOTH ENDS.

15° CHAMFER ON BOTH SIDES OF HEXAGON.

THREAD RUNOUT OR UNDERCUT TO ROOT OF THREAD.



ENLARGED VIEW OF CONE END

MARK	O/D OF PIPES	Z	Y	X	W	FULL V THREAD	U	S	Q	P	M	L	K	J	H	G	F
		B.S.P. THREN	+0.01 -0	DIA DRILL	+0.01 -0	+0.01 -0	+0.01 -0	+0.01 -0	+0.01 -0	MIN MAX		+0.01 -0	DIA DRILL	+0.01 -0	+0.01 -0	+0.01 -0	+0.005
A	3/16"	1/8"	.160	3/32"	.22	.36	.72	.25	2.21	.595 .600	.03	.54	1/16"	.10	.39	.330	.01
B	1/4"	1/4"	.224	5/32"	.28	.39	.85	.25	2.47	.705 .710	.04	.67	1/16"	.14	.52	.440	.01
BB	5/16"	19.T.P.I. .60%	.267	3/16"	.32	.40	.91	.25	2.59	.815 .820	.04	.79	1/16"	.14	.60	.525	.01
C	3/8"	3/8"	.333	1/4"	.32	.42	.93	.27	2.67	.915 .920	.04	.92	1/16"	.14	.66	.580	.01
CC	7/16"	14.T.P.I. .75%	.377	5/16"	.32	.47	1.01	.28	2.83	1.002 1.010	.06	.96	1/16"	.18	.75	.650	.015
D	1/2"	1/2"	.438	3/8"	.32	.48	1.03	.28	2.87	1.092 1.100	.06	1.06	1/16"	.18	.83	.720	.015

THE MATERIAL TO BE LIGHT ALLOY TO D.T.D. 423. (LATEST ISSUE).

FINISH:- TO BE ANODISED TO SPEC: D.T.D. 910. (LATEST ISSUE).

NOTES:- SCREW THREADS TO B.S. SPECN N° 84 -1940,

MEDIUM FIT, TRUNCATED THREADS TO AMENUMENT N° 3-1945

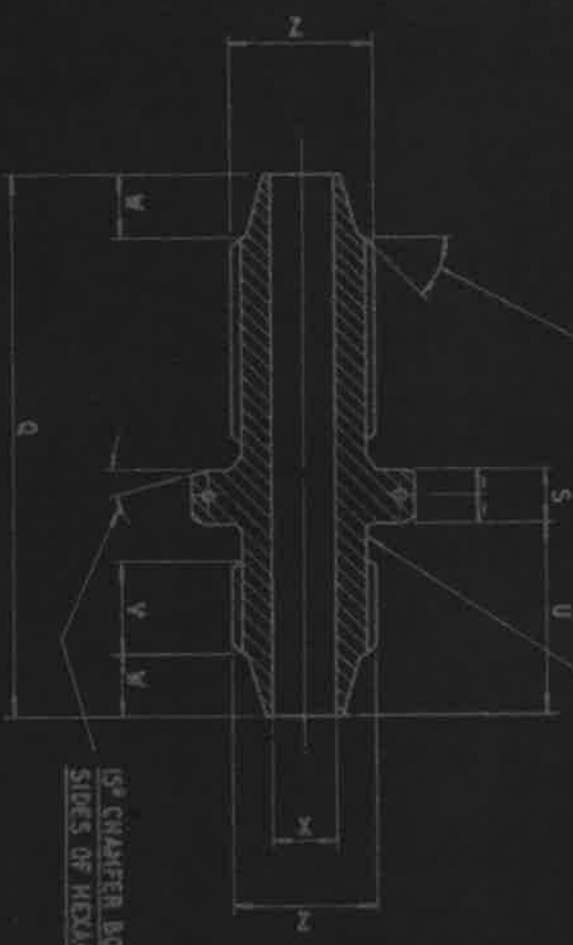
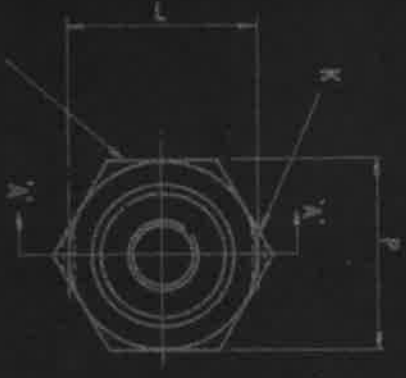
FOR GENERAL ARRANGEMENT, SEE A.G.S. N° 1144.

WORKING PRESSURE:- 3,000 LB/SQIN FOR SIZES UP TO 1/2" BSP.

ISSUED BY ROYAL AIRCRAFT ESTABLISHMENT	TITLE:- PIPE COUPLINGS, (LIGHT ALLOY). HEXAGON BULKHEAD CONE UNION BODY (3/16" TO 1/2")				DRAWN c.T. Reynolds.	TRACED J.R. ASTON 19-9-45		
	ISSUE N°	7	7				CHECKED J.R. ASTON	APPROVED J.R. ASTON 19/10/45
	ALTER ⁿ N°	AS/AGS 388	SM 856					

Q	F.21
10	F.112
11	F.46
12	F.25
13	F.101
14	F.111

SM 2024



45° CHAMFER TO ROOT OF
THREAD APPLIES BOTH ENDS

UNDERCUT TO
ROOT OF THREAD OR
THREAD FURROW.

15° CHAMFER BOTH
SIDES OF HEXAGON

SEE A.G.S. 1100 FOR GENERAL INFORMATION
B.S.P.E. SCREW THREADS TO B.S. SPEC. 2779 MEDIUM FIT-TRUNCATED
WORKING PRESSURE - 3000 L.B./SQ. IN.
FOR GENERAL ARRANGEMENT SEE A.G.S. 1144.

HT	PT	ALUMINUM ALLOY	THIRD ANGLE PROJECTION
NO. PARTS	NO. PARTS	DESCRIPTION	MATERIAL - SPECIFICATIONS
1	1		L.B.S.

DESIGNED BY THE ROYALTY OF BRITAIN AEROSPACE COMPONENTS LTD.
14, GERRARD STREET, ST. JAMES, LONDON, W.1.

ISSUE No. 1
 ALT. No. F101
 SM2027 13

MARK OF PIPES	O/DIA.	F	G	H	J	K	L	M	P	Q	S	U	V		W	X	Y	Z
													DRILL DIA.	FULL THREAD				
A	3" / 16	.01"	.330" .325"	.390" .380"	.110" .100"	1" / 16	.530" .530"	.030"	.600" .595"	2.22" 2.20"	.260" .240"	.730" .720"	.370" .350"	.230" .220"	3" / 32	.170" .160"	1" / 8	B. S. P. F. THREAD
B	1" / 4	.01"	.440" .435"	.520" .510"	.150" .140"	1" / 16	.680" .660"	.040"	.710" .705"	2.48" 2.46"	.260" .240"	.860" .850"	.400" .380"	.290" .280"	5" / 32	.234" .224"	1" / 4	
B B	5" / 16	.01"	.525" .520"	.600" .590"	.150" .140"	1" / 16	.800" .780"	.040"	.820" .815"	2.60" 2.58"	.260" .240"	.920" .910"	.410" .390"	.330" .320"	3" / 16	.277" .267"	3" / 8	19 T.P.L. .60" O/D WHIT(8.5.84)
C	3" / 8	.01"	.580" .575"	.660" .650"	.150" .140"	1" / 16	.930" .910"	.040"	.920" .915"	2.68" 2.66"	.280" .260"	.940" .930"	.430" .410"	.330" .320"	1" / 4	.343" .333"	3" / 8	
C C	7" / 16	.015"	.650" .645"	.730" .740"	.190" .180"	1" / 16	.970" .950"	.060"	1.010" 1.002"	2.84" 2.82"	.290" .270"	1.020" 1.010"	.480" .460"	.330" .320"	5" / 16	.387" .377"	5" / 8	14 T.P.L. .75" O/D WHIT(8.5.84)
D	1" / 2	.015"	.720" .715"	.830" .820"	.190" .180"	1" / 16	1.070" 1.050"	.060"	1.100" 1.092"	2.88" 2.86"	.290" .270"	1.040" 1.030"	.490" .470"	.330" .320"	3" / 8	.448" .438"	1" / 2	

DESIGNED ON	DRAWN	TRACED	CHECKED	APPROVED FOR	DATE	HT	PT	SCALE	LIMITS NOT SHOWN	DESCRIPTION	MATERIAL - REMARKS	REF.	DRAWING OR PART No.	AT	QTY
												UNIT	HAND		
	F. A. C.	F. A. C.	F. A. C.	<i>F. A. C.</i>	12.7.58					PIPE COUPLINGS (ALUMINUM ALLOY) HEXAGON BULKHEAD CONE UNION BODY 3/16" TO 1/2"					

ISSUED BY THE SOCIETY OF BRITISH AIRCRAFT CONSTRUCTORS LTD.,
 29, KING STREET, ST. JAMES'S, LONDON, S.W.1.