

SEE A.G.S. 100 FOR GENERAL INFORMATION.

ENLARGED VIEW OF UNDERCUT.

SMOOTH FINISH FREE FROM TOOL MARKS.

45° CHAMFER TO ROOT OF THREAD. NOTE APPLIES TO BOTH ENDS.

15° CHAMFER ON BOTH SIDES OF HEXAGON.

THREAD RUN OUT OR UNDERCUT TO ROOT OF THREAD

SMOOTH FINISH FREE FROM TOOL MARKS.

ENLARGED VIEW OF CONE END.

MARK.	O/D OF PIPE	Z	Y	X	W	FULL THD. V	U	S	Q	P	M	L	K	J	H	G	F	E
		B.S.P. THREAD	+010 -0	DIA. DRILL	+01 -0	±.01	+01 -0	±.01	±.01	MIN. MAX.		±.01	DIA. DRILL	±.005	+01 -0	+0 -.01	+0 -.005	
A	3/16"	1/8"	.160	3/32"	.22"	.36"	.72"	.25"	1.84"	.595" .600"	.03"	.54"	1/16"	.295"	.10"	.39"	.330"	.010"
B	1/4"	1/4"	.224	5/32"	.28"	.39"	.85"	.25"	2.13"	.705" .710"	.04"	.67"	1/16"	.410"	.14"	.52"	.440"	.010"
BB	5/16"	19 T.P.I. 60% D	.267	3/16"	.32"	.40"	.91"	.25"	2.25"	.815" .820"	.04"	.79"	1/16"	.480"	.14"	.60"	.525"	.010"
C	3/8"	3/8"	.333	1/4"	.32"	.42"	.93"	.27"	2.29"	.915" .920"	.04"	.92"	1/16"	.550"	.14"	.66"	.580"	.010"
CC	7/16"	14 T.P.I. 75% D	.377	5/16"	.32"	.47"	1.01"	.28"	2.47"	1.002" 1.010"	.06"	.96"	1/16"	.600"	.18"	.75"	.650"	.015"
D	1/2"	1/2"	.438	3/8"	.32"	.48"	1.03"	.28"	2.58"	1.092" 1.100"	.06"	1.06"	1/16"	.690"	.18"	.83"	.720"	.015"

THE MATERIAL TO BE LIGHT ALLOY TO D.T.D. 423. (LATEST ISSUE).

FINISH :- TO BE ANODISED TO SPEC: D.T.D. 910. (LATEST ISSUE).

NOTES :- SCREW THREADS TO B.S. SPEC: N° 84 - 1940, MEDIUM FIT, TRUNCATED THREADS TO AMENDMENT N° 3 - 1945. FOR GENERAL ARRANGEMENT, SEE A.G.S. N° 1144.

WORKING PRESSURE :- 3,000 LB/SQ.IN. FOR SIZES UP TO 1/2" B.S.P.

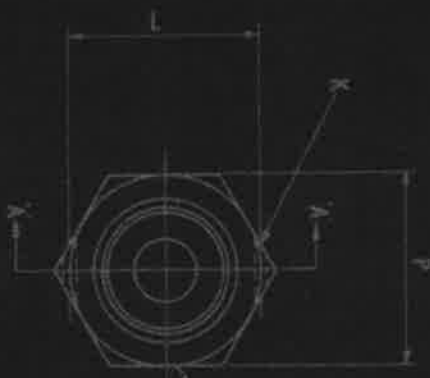
ISSUED BY. ROYAL AIRCRAFT ESTABLISHMENT	TITLE:- PIPE COUPLINGS, (LIGHT ALLOY). HEXAGON BULKHEAD UNION BODY, (3/16" TO 1/2") (CONE TO NIPPLE TYPE).				DRAWN C.T.Reynolds.	TRACED A.N.FOWLER 26.9.45.
	ISSUE N°	7	7		CHECKED <i>[Signature]</i>	APPROVED <i>[Signature]</i> 29/10/45
ALTER N°	AS/AGE 388	SM 856				

AGS 1147 SHT. 1

1	FE 2	SM 20224
2	FE 2	
3	FE 2	
4	FE 2	
5	FE 2	
6	FE 2	
7	FE 2	
8	FE 2	
9	FE 2	
10	FE 2	
11	FE 2	
12	FE 2	
13	FE 2	
14	FE 2	
15	FE 2	
16	FE 2	
17	FE 2	
18	FE 2	
19	FE 2	
20	FE 2	

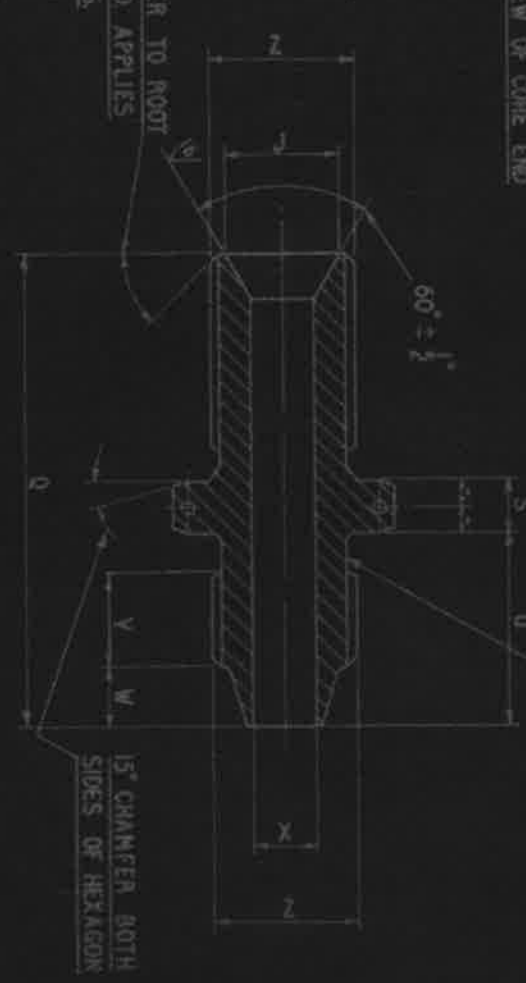


ENLARGED VIEW OF CONE END



PART N° HERE

45° CHAMFER TO ROOT OF THREAD APPLIES BOTH ENDS.



UNDERCUT TO ROOT OF THREAD OR THREAD BURNOUT

15° CHAMFER BOTH SIDES OF HEXAGON



ENLARGED VIEW OF UNDERCUT

SEE AGS 100 FOR GENERAL INFORMATION
 B.S.P.E. THREADS TO B.S. SPEC. 2779 MEDIUM FIT-TRUNCATED
 WORKING PRESSURE: 3000 LB/SQ. IN.
 FOR GENERAL ARRANGEMENT SEE AGS 1144.

SYMBOL	DESCRIPTION	UNIT	REMARKS
HT	HEAT TREATING		
PT	PAINT		

DESIGNED BY THE BENTLEY OR BENTLEY ASSOCIATES COMPANY, LTD.	DRAWING ON	DATE	SCALE	PROJECT	NO.	REV.	DATE	BY	CHECKED BY	APPROVED BY	
25, KING STREET, ST. MARTIN'S, LONDON E.C. 4, ENGLAND											
AGS 1147 SHT. 1											

A.G.S. 1147 SHT. 2

SM 2027

M A R K	O/DIA OF PIPE	E	F	G	H	J	K		L	M	P	Q	S	U	V		W	X		Z
							DRILL DIA.	DRILL DIA.							FULL THREAD	DRILL DIA.		B.S.P.F. THREAD		
A	5/16	.010"	.330" .325"	.390" .380"	.110" .100"	.300" .290"	1/16	1/16	.550" .530"	.030"	.600" .595"	1-950° 1-930°	.260" .240"	.730" .720"	.370" .350"	.230" .220"	3/32	3/32	.170" .160"	1/8
B	1/4	.010"	.440" .435"	.520" .510"	.150" .140"	.415" .405"	1/16	1/16	.680" .660"	.040"	.710" .705"	2-140° 2-120°	.260" .240"	.860" .850"	.400" .380"	.290" .280"	5/32	5/32	.234" .224"	1/4
B-B	5/16	.010"	.525" .520"	.600" .590"	.150" .140"	.485" .475"	1/16	1/16	.800" .780"	.040"	.820" .815"	2-260° 2-240°	.260" .240"	.920" .910"	.410" .390"	.330" .320"	3/16	3/16	.277" .267"	NOT TO BE USED WHIT (BS.84)
C	3/8	.010"	.580" .575"	.660" .650"	.150" .140"	.555" .545"	1/16	1/16	.930" .910"	.040"	.920" .915"	2-300° 2-280°	.280" .260"	.940" .930"	.430" .410"	.330" .320"	1/4	1/4	.343" .333"	3/8
C-C	7/16	.015"	.650" .645"	.750" .740"	.190" .180"	.605" .595"	1/16	1/16	.970" .950"	.060"	1-010° 1-002°	2-480° 2-460°	.290" .270"	1-020° 1-010°	.480" .460"	.350" .320"	5/16	5/16	.387" .377"	NOT TO BE USED WHIT (BS.84)
D	1/2	.015"	.720" .715"	.830" .820"	.190" .180"	.695" .685"	1/16	1/16	1-070° 1-050°	.060"	1-100° 1-092°	2-590° 2-570°	.290" .270"	1-040° 1-030°	.490" .470"	.330" .320"	3/8	3/8	.448" .438"	1/2

HT	PT	SCALE	DESCRIPTION	MATERIAL	REMARKS

ISSUED BY THE SOCIETY OF BRITISH AIRCRAFT CONSTRUCTORS LTD.,
18 KING STREET, ST. JAMES'S, LONDON, S.W.1.

HT

PT

PIPE COUPLINGS (ALUMINUM ALLOY) HEXAGON BALLHEAD UNION BODY 3/8" TO 1/2" (CONE TO NIPPLE TYPE)

A.G.S. 1147 SHT. 2