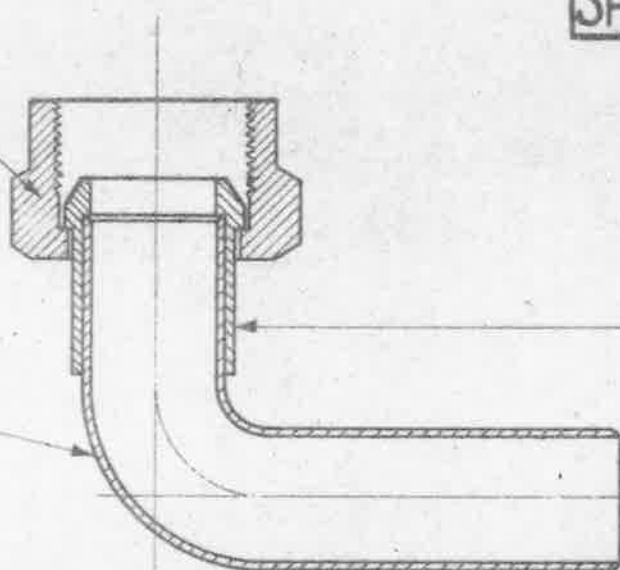


AGS
1217

AGS
1175

AGS
209

SILVER SOLDERED
TO TUBE WITH
NUT IN POSITION.



MARK	TO SUIT HOSE BORE	COMPONENT PARTS		
		A.G.S. 1217 MARK	A.G.S. 209 MARK.	A.G.S. 1175. MARK
B	1/4"	B	B	B
C	3/8"	C	D	C
D	1/2"	D	F	D
E	5/8"	E	H	E
F	3/4"	F	J	F
G	7/8"	G	K	G
H	1"	H	L	H
J	1 1/4"	J	M	J
K	1 1/2"	K	N	K

SPECIFICATION:- SILVER SOLDERING TO B.S. SPEC: 206 (GRADE C) (LATEST ISSUE).

FINISH:- 1. FOR ELBOWS 1" DIA. & OVER.

(a) CADMIUM PLATED, MINIMUM THICKNESS OF PLATING AT ALL PLACES TO BE .0002" (THE USE OF INTERNAL ANODES WILL NORMALLY BE NECESSARY) OR

(b) TREATED BY A PHOSPHATE PROCESS PREFERABLY WITHOUT ACCELERATORS FOR NOT LESS THAN 20 MINUTES, FOLLOWED BY STAINING & OILING.

2. FOR ELBOWS LESS THAN 1" DIA.

AS IN 1(b) ABOVE.

A PAINT FINISH IS NOT TO BE USED.

NOTES:- 1. THIS END CONNECTION WAS FORMERLY USED WITH FLEXATEX HOSE.

2. FOR ASSEMBLY OF END CONNECTION (90° NIPPLE ELBOW) TO HOSE, SEE A.G.S. 1183.

ISSUED BY THE
ROYAL
AIRCRAFT
ESTABLISHMENT

TITLE:- END CONNECTION
FUEL HOSE -
90° NIPPLE ELBOW-ASSEMBLY.

DRAWN
C.T. Reynolds

TRACED
A.N. FOWLER
6-7-44.

ISSUE No 2 3 4 5 6
AS NO 1 AS NO 2 AS NO 3 AS NO 4 AS NO 5 AS NO 6

CHECKED
1/11/44

APPROVED
[Signature]