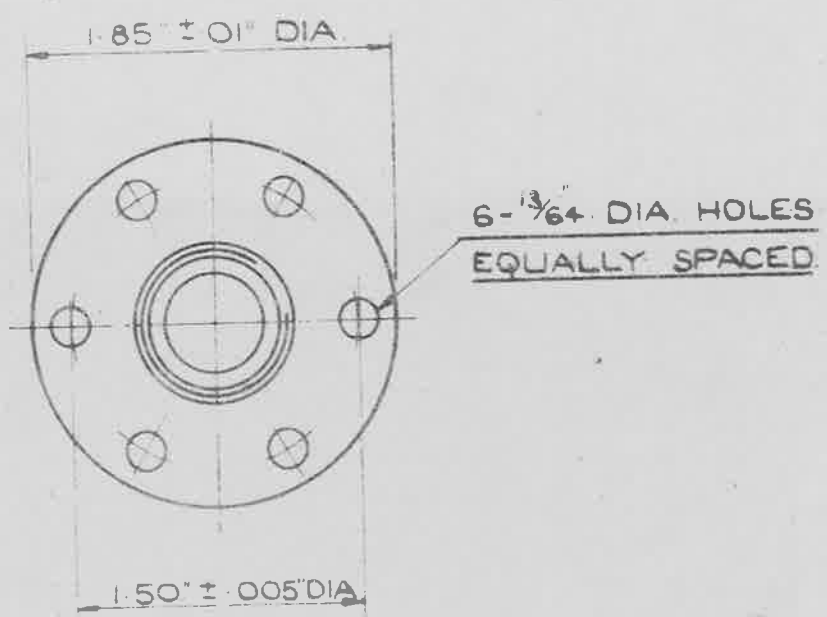


SMOOTH FINISH FREE FROM TOOL MARKS.
NOTE APPLIES TO BOTH ENDS



THE MATERIAL TO BE H.T. BRASS PRESSING TO B.S.S.1001-1002 (LATEST ISSUE)

NOTES - SCREW THREADS TO B.S SPEC. No 84-1940
MEDIUM FIT, TRUNCATED THREADS, ~~1.50 ± 0.005~~ ~~1.50 ± 0.005~~ ~~1.50 ± 0.005~~
WORKING PRESSURE - 3,000 LB/SQ. IN.

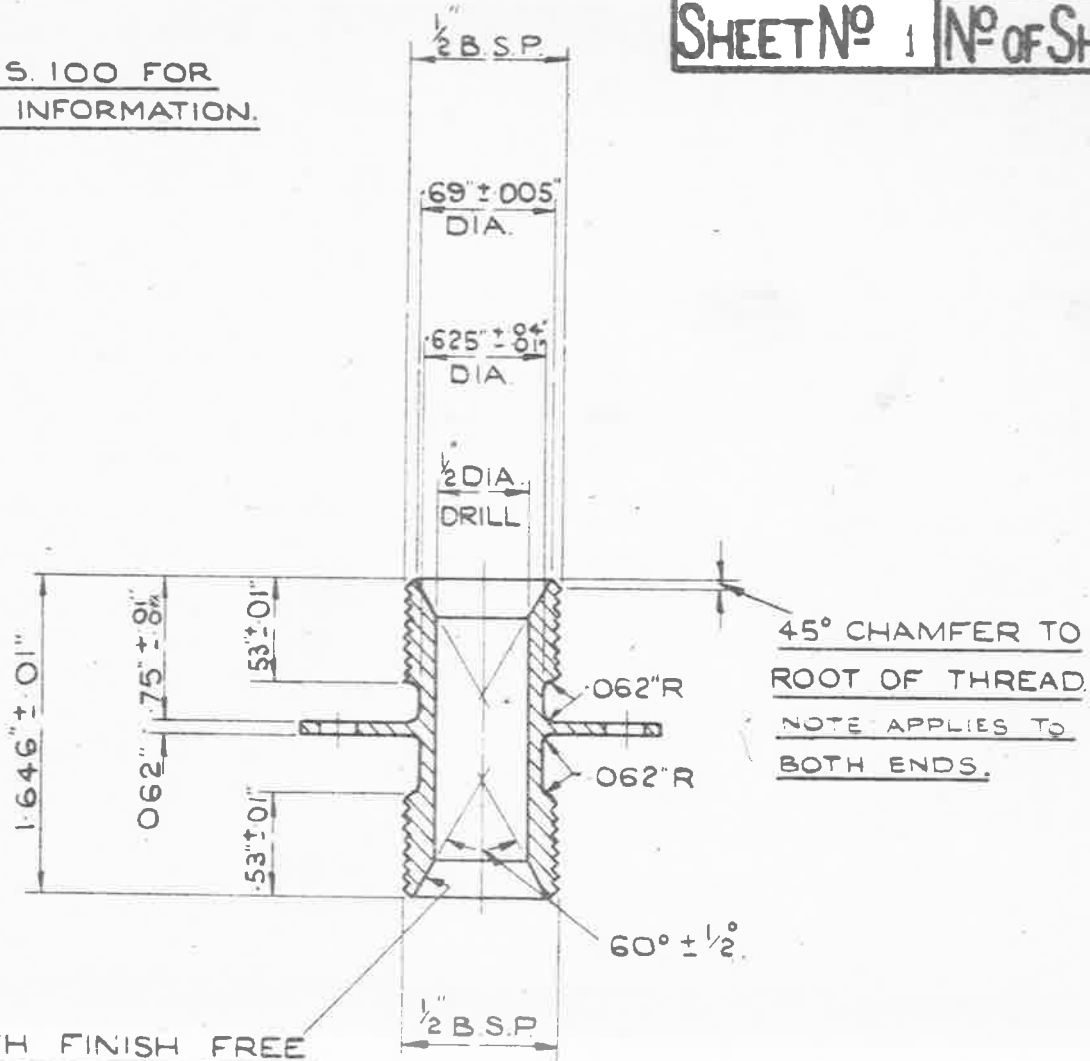
FOR ARRANGEMENT OF PIPE JOINTS SEE A.G.S.1101

FINISH TO BE ADAPTED TO SPELLED TO 90° LATENT SUE
ALTERNATIVELY ELECTRO-POLISHED, FINISHNESS NOT LESS THAN .0002

ISSUED BY ROYAL AIRCRAFT ESTABLISHMENT	TITLE: - PIPE COUPLING, 1/2" FLANGED BULKHEAD UNION BODY.				DRAWN: K. Wilson	TRACE 6.6.45
	ISSUE No 1	2	3	4	CHECKED C. Reynolds	APPROVED [Signature]
	ALTER No	MODS 600	AGS No 417	AS No 603		

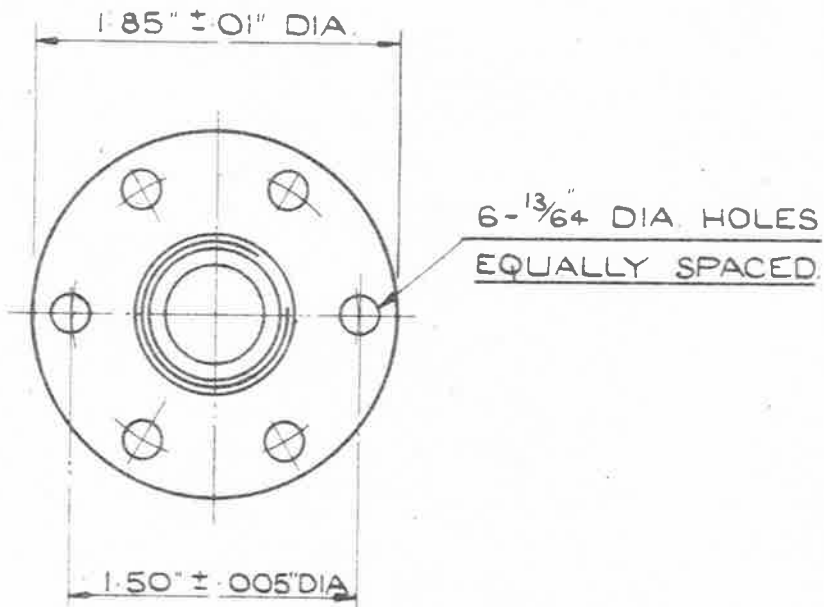
SEE A.G.S. 100 FOR GENERAL INFORMATION.

Res. Ags. 154



SMOOTH FINISH FREE FROM TOOL MARKS.
NOTE APPLIES TO BOTH ENDS

45° CHAMFER TO ROOT OF THREAD.
NOTE APPLIES TO BOTH ENDS.



THE MATERIAL TO BE H.T. BRASS PRESSING TO B.S.S.1001-1002 (LATEST ISSUE)

NOTES:- SCREW THREADS TO B.S. SPEC. N^o 84-1940

MEDIUM FIT, TRUNCATED THREADS TO AMENDMENT N^o 3 - 1945.

WORKING PRESSURE :- 3,000 LB/SQ. IN.

FOR ARRANGEMENT OF PIPE JOINTS SEE A.G.S. 1101.

FINISH:- TO BE CADMIUM PLATED TO SPEC: D.T.D. 904, (LATEST ISSUE).

ALTERNATIVELY, ELECTRO-TINNED, THICKNESS NOT LESS THAN .0002"

ISSUED BY ROYAL AIRCRAFT ESTABLISHMENT	TITLE:- PIPE COUPLING, 1/2" FLANGED BULKHEAD UNION BODY.						DRAWN. K Wilson	TRACED D.E.P. 6.6.45
	ISSUE N ^o	1	2	3	4	4	CHECKED	APPROVED.
	ALTER ^o N ^o	MOD AGS 500	A.S.N. AGS 447	A.S/AGS 663	A.S/AGS 988	SM 856	C.T. Reynolds	<i>[Signature]</i> 6.6.45