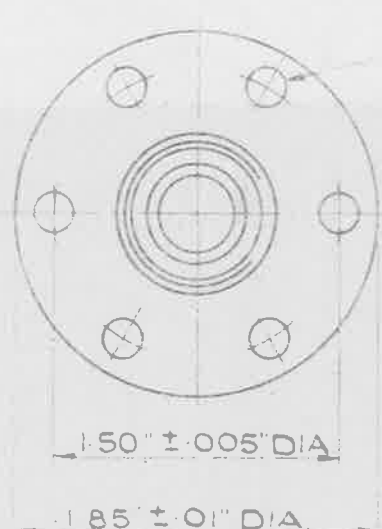


45° CHAMFER TO ROOT OF THREAD
NOTE APPLIES TO BOTH ENDS.

SMOOTH FINISH FREE FROM TOOL MARKS
NOTE APPLIES TO BOTH ENDS.

6 1/8 DIA HOLES EQUALLY SPACED.



THE MATERIAL TO BE HT BRASS PRESSING TO B S S. 1001-1002 (LATEST ISSUE)

NOTES:- SCREW THREADS TO B S SPEC. No 84 - 1940

MEDIUM FIT. TRUNCATED THREAD TO AMENDMENT No 3 - 1945

WORKING PRESSURE :- 3,000 LB/SQ IN.

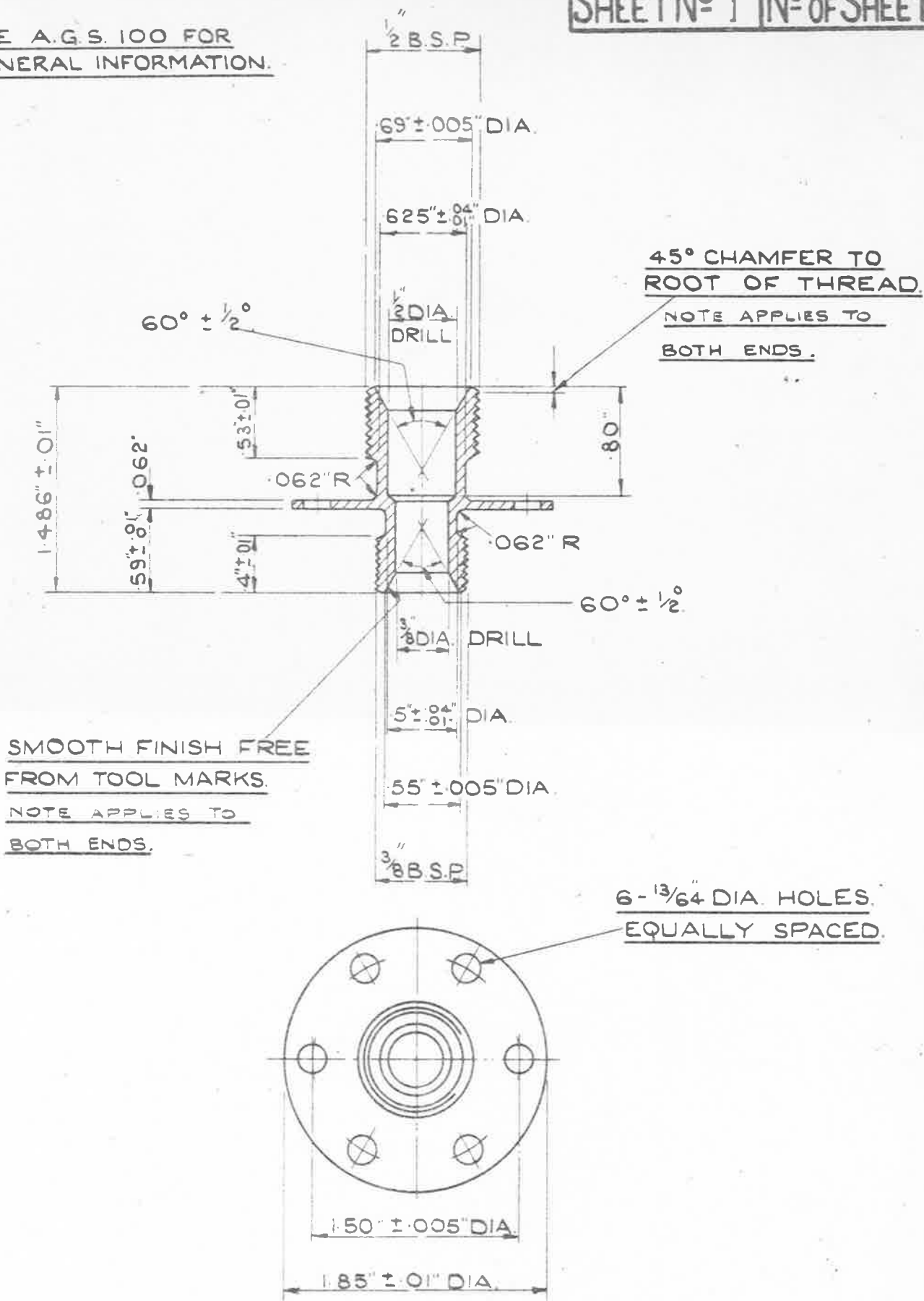
FOR ARRANGEMENT OF PIPE JOINTS SEE AGS 1101

FINISH:- TO BE CADMIUM PLATED TO SPEC: D.T.D. 904 (LATEST ISSUE)
ALTERNATIVELY, ELECTRO-TINNED, THICKNESS NOT LESS THAN .0002"

ISSUED BY ROYAL AIRCRAFT	TITLE:- PIPE COUPLING 1/2 x 3/8 FLANGED BULKHEAD UNION BODY		DRAWN K Wilson	TRACED DERR 6445
	ISSUE No	1	CHECKED	APPROVED.

SEE A.G.S. 100 FOR GENERAL INFORMATION.

28/1/46
 RES. 1574



THE MATERIAL TO BE H.T. BRASS PRESSING TO B.S.S. 1001-1002 (LATEST ISSUE)

NOTES:- SCREW THREADS TO B.S. SPEC. No 84 - 1940.

MEDIUM FIT. TRUNCATED THREADS TO AMENDMENT No 3 - 1945.

WORKING PRESSURE :- 3000 LB/SQ. IN.

FOR ARRANGEMENT OF PIPE JOINTS SEE A.G.S. 1101.

FINISH :- TO BE CADMIUM PLATED TO SPEC: D.T.D. 904, (LATEST ISSUE),
 ALTERNATIVELY, ELECTRO-TINNED, THICKNESS NOT LESS THAN 0.002"

ISSUED BY ROYAL AIRCRAFT ESTABLISHMENT.	TITLE:- PIPE COUPLING. 1/2 x 3/8 FLANGED BULKHEAD UNION BODY.				DRAWN K Wilson	TRACED O.E.M.P. 6.6.45
	ISSUE No 1	2	3	4	CHECKED C.T. Reynolds	APPROVED. [Signature]
	ALTER No	MID. ACCS/ 600	A.S. No AGS/417	AS/AGS/ 663	AS/AGS/ 388	SM 856