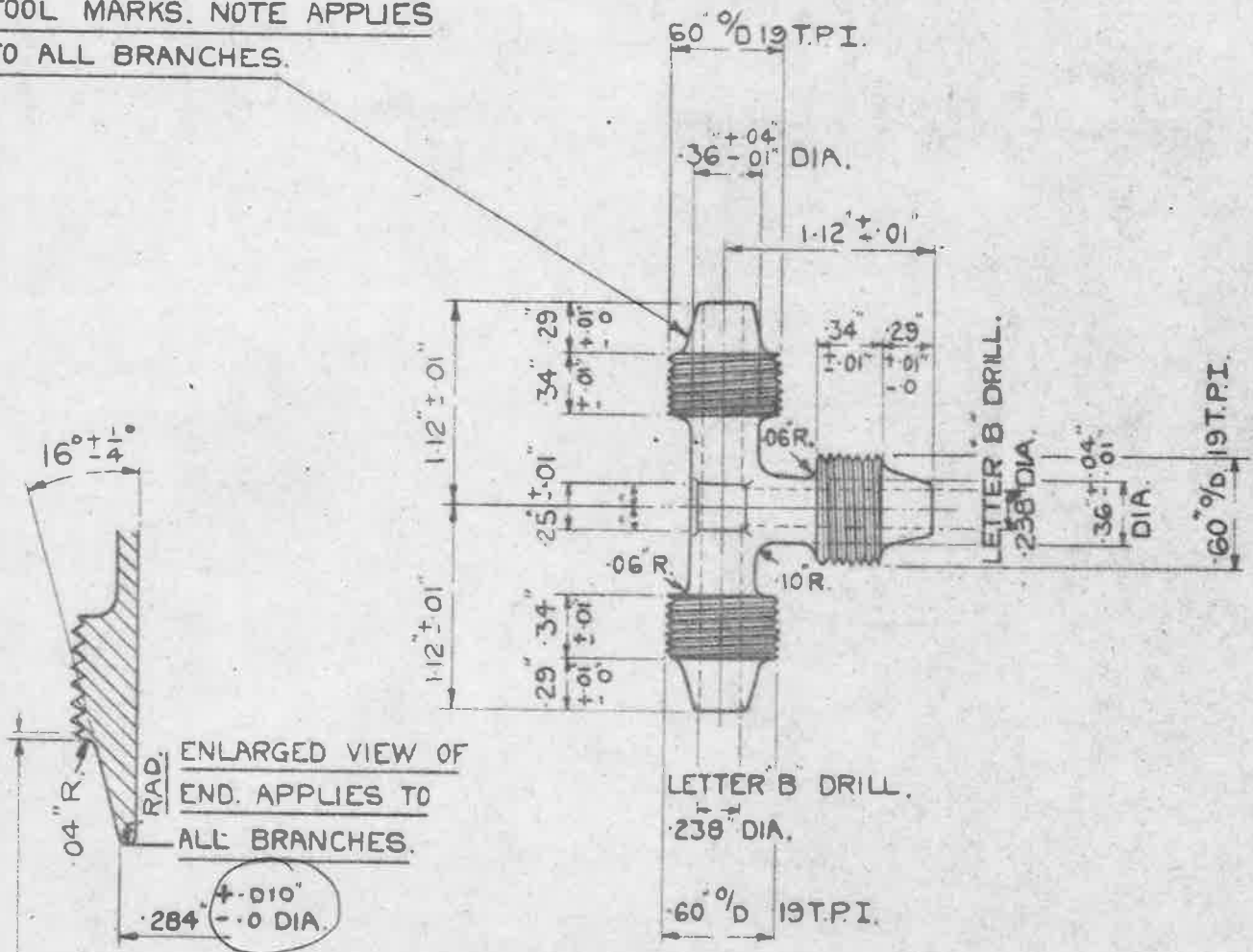
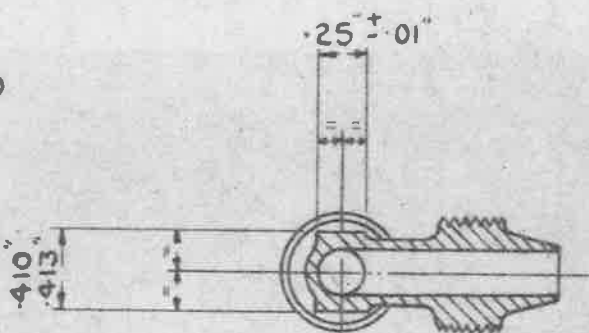


SMOOTH FINISH FREE FROM TOOL MARKS. NOTE APPLIES TO ALL BRANCHES.



45° CHAMFER TO ROOT OF THREAD. NOTE APPLIES TO ALL BRANCHES.



5/16" x 5/16" x 5/16" -TEE PIECE.

THE MATERIAL TO BE H.T. BRASS PRESSING TO B.S.S. 1001-1002 (LATEST ISSUE).

NOTES: SCREW THREADS TO B.S. SPEC. N° 84-1940.

MEDIUM FIT. TRUNCATED THREADS TO AMENDMENT N° 3 - 1945.

FOR ARRANGEMENT OF PIPE JOINTS SEE A.G.S. 1101.

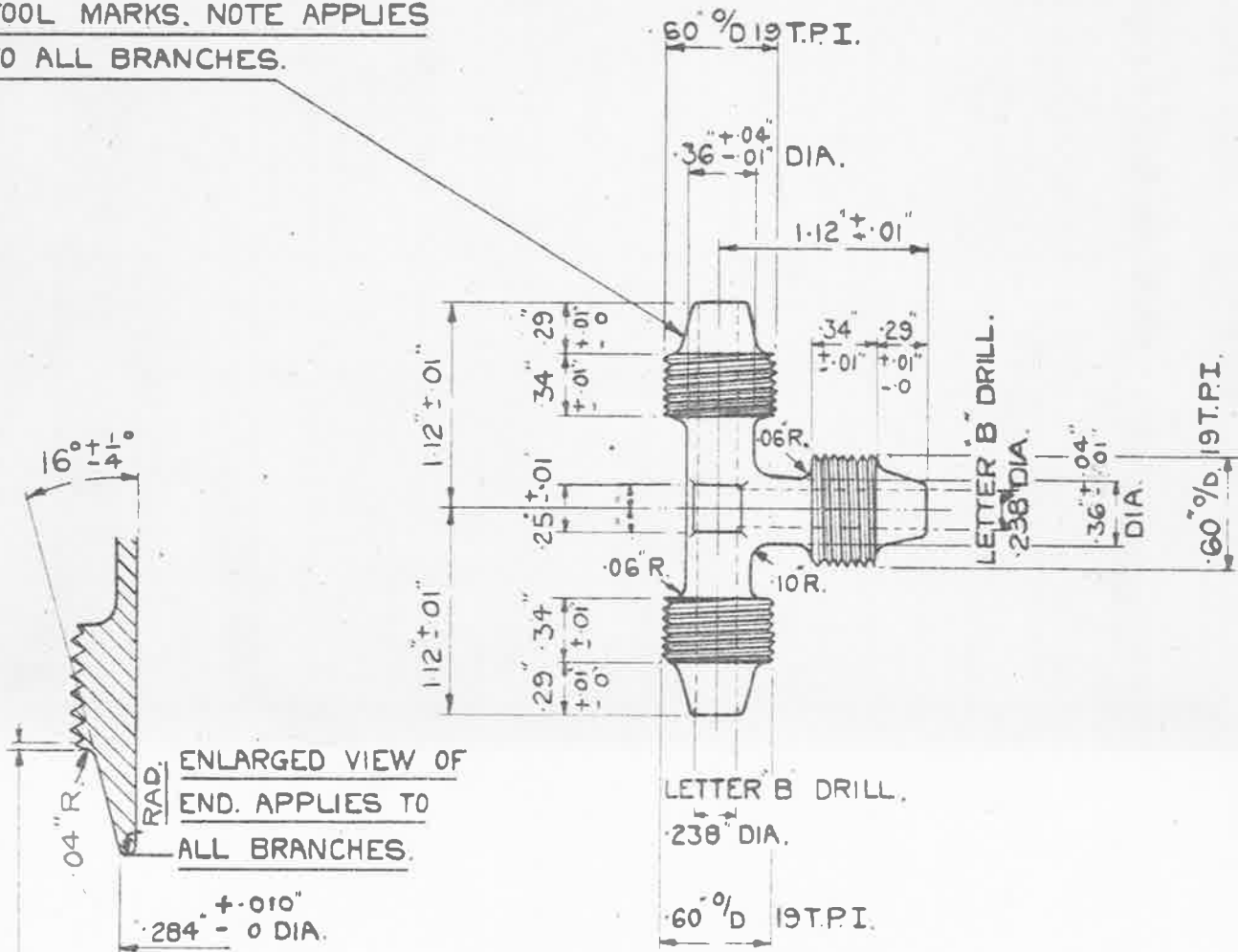
WORKING PRESSURE 3000LB/SQ. IN.

FINISH: TO BE CADMIUM PLATED TO SPEC: D.T.D. 904, (LATEST ISSUE), ALTERNATIVELY, ELECTRO-TINNED, THICKNESS NOT LESS THAN .0002".

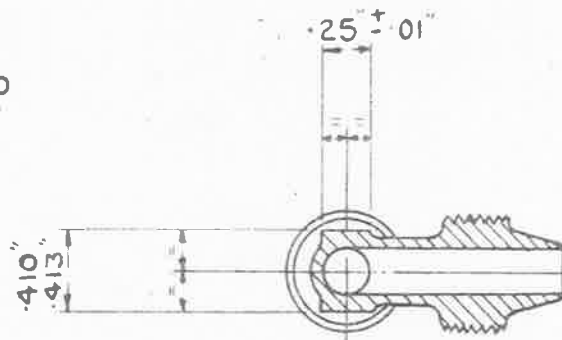
| | | | | | | |
|--|---|-------------------|----------------|----------------|--------------------|---------------------------------|
| ISSUED BY ROYAL AIRCRAFT ESTABLISHMENT. | TITLE:- PIPE COUPLINGS. CONE TEE (EQUAL) | | | | DRAWN K Wilson. | TRACED I.M.BROWN 6-10-45. |
| | ISSUE N° | 1 | 2 | 3 | CHECKED | APPROVED |
| | ALTER ^N N° | MOD N° AGS/000 | AS/AGS/ 663 | AS/AGS/ 877 | C.T. Reynolds. | <i>[Signature]</i> 14/10/45 |

SEE A.G.S. 100 FOR GENERAL INFORMATION.

SMOOTH FINISH FREE FROM TOOL MARKS. NOTE APPLIES TO ALL BRANCHES.



45° CHAMFER TO ROOT OF THREAD. NOTE APPLIES TO ALL BRANCHES.



5/16" x 5/16" x 5/16" - TEE PIECE.

THE MATERIAL TO BE H.T. BRASS PRESSING TO B.S.S. 1001-1002 (LATEST ISSUE).

NOTES: SCREW THREADS TO B.S. SPEC. N° 84-1940.

MEDIUM FIT. TRUNCATED THREADS. TO AMENDMENT N° 3 - 1945.

FOR ARRANGEMENT OF PIPE JOINTS SEE A.G.S. 1101.

WORKING PRESSURE 3000 LB/SQ. IN.

FINISH: TO BE CADMIUM PLATED TO SPEC: D.T.D. 904. (LATEST ISSUE), ALTERNATIVELY, ELECTRO-TINNED, THICKNESS NOT LESS THAN .0002".

| | | | | | | | | |
|--|---|---------------------------------------|----------------|----------------|----------------|-----------|--------------------|---------------------------------|
| ISSUED BY ROYAL AIRCRAFT ESTABLISHMENT. | TITLE:- PIPE COUPLINGS. CONE TEE (EQUAL) | | | | | | DRAWN K Wilson. | TRACED I.M.BROWN 5-10-45. |
| | ISSUE N° | 2 ²⁸ / ₁₀ 47 | 3 | 4 | 4 | | | |
| | ALTER ^N N° | MOD. N° AGS 600 | AS/AGS/ 663 | AS/AGS/ 877 | AS/AGS/ 988 | SM 866 | C.T Reynolds | <i>[Signature]</i> 14/10/45 |