

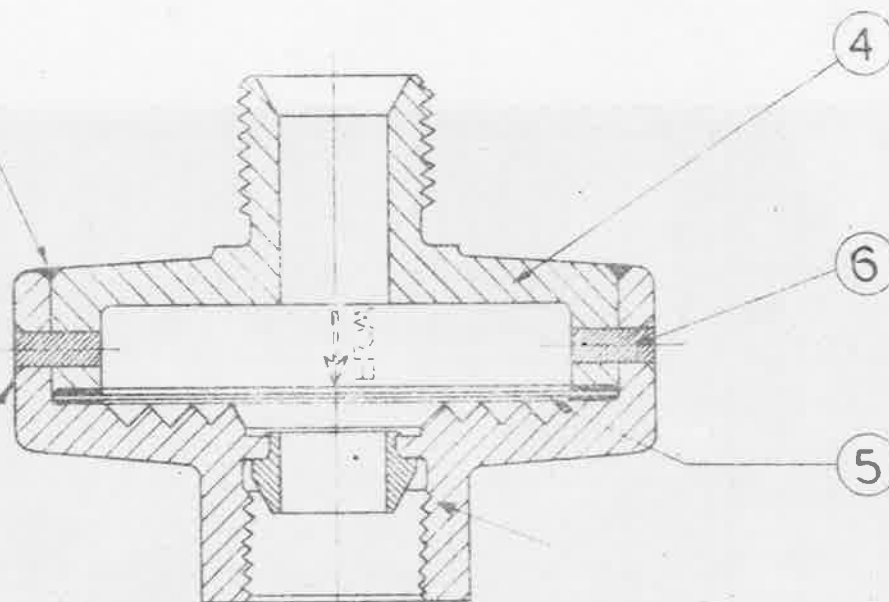
OBSOLESCE

MINISTRY OF
SUPPLY

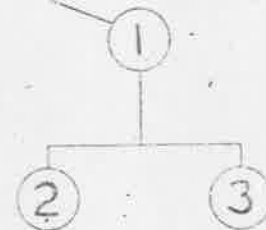
AGS. No 1210.

SHEET No 1. No of SHEETS 5

TOP CAP, ITEM 4, TO BE
SOFT SOLDERED TO ITEM 1
TO B.S. SPEC. 219 GRADE 'C'
(LATEST ISSUE).



2 - PEGS TO BE DRIVEN
INTO PLACE AND ENDS
SOFT SOLDERED TO B.S.
SPEC. 219, GRADE 'C'.
(LATEST ISSUE)



TEST REQUIREMENTS

SEALING OFF ON CONE (ITEM 3), ASSEMBLY IS TO BE TESTED
WITH AN INTERNAL PNEUMATIC PRESSURE OF 50 LB/IN²

SCALE: 2/1.

PARTS REQUIRED FOR ONE COMPLETE FILTER

ITEM No	A.G.S. No	DESCRIPTION	No OFF	REMARKS.
1	1210, SH: 2	CONE & FILTER BODY ASSEMBLY.	1	COMPRISING ITEMS 2 & 3. A.G.S. 1210, SHEETS 3 & 5.
4	1210, SH: 4	TOP CAP.	1	
5	1210, SH: 5	FILTER ELEMENT	1	
6	1210, SH: 5	PEG.	2	

ISSUED BY
ROYAL
AIRCRAFT
ESTABLISHMENT

TITLE:— OIL DILUTION VALVE FILTER
GENERAL ARRANGEMENT.

DRAWN.
CT Reynolds

TRACED
R.C. 22-6-44

ISSUE No 2
ALTER No 1
MOD No AGS/557
AS No AGS/344
AS/AGS 803

CHECKED
5-7-44

APPROVED
17-7-44

OBSOLESCE

MINISTRY OF
SUPPLY

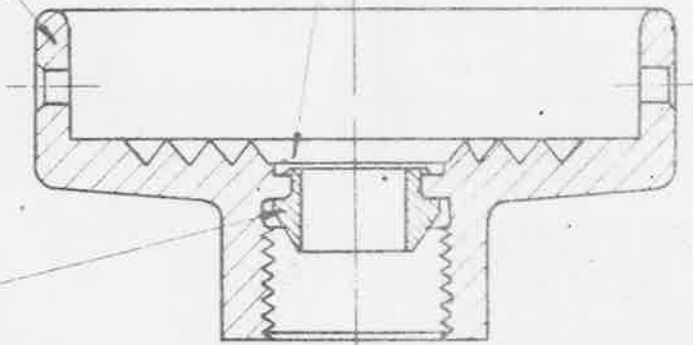
AGS. N°1210

SHEET N° 2 N° OF SHEETS

2

TOP OF ITEM 3 TO BE PRESSED
OVER AND SOFT SOLDERED TO BS
SPEC. N° 219 (GRADE C)

3



1

NOTE:-

BEFORE PEENING OVER, CONE MUST BE
CENTRALISED WITH THREAD, USING A
SUITABLE FIXTURE.
CARE TO BE TAKEN THAT CONE IS NOT
DAMAGED WHEN PEENING.

ISSUED BY
THE
ROYAL
AIRCRAFT
ESTABLISHMENT

TITLE - OIL DILUTION VALVE FILTER
CONE & FILTER BODY ASSEMBLY

DRAWN
C.T Reynolds

TRACED
I.O.D
22/6/44

ISSUE N° 2
ALTERN N° MOD. N° AS/AGS
AGS/557 B03

CHECKED
D. H. S. Cooper

APPROVED.
7-7-44

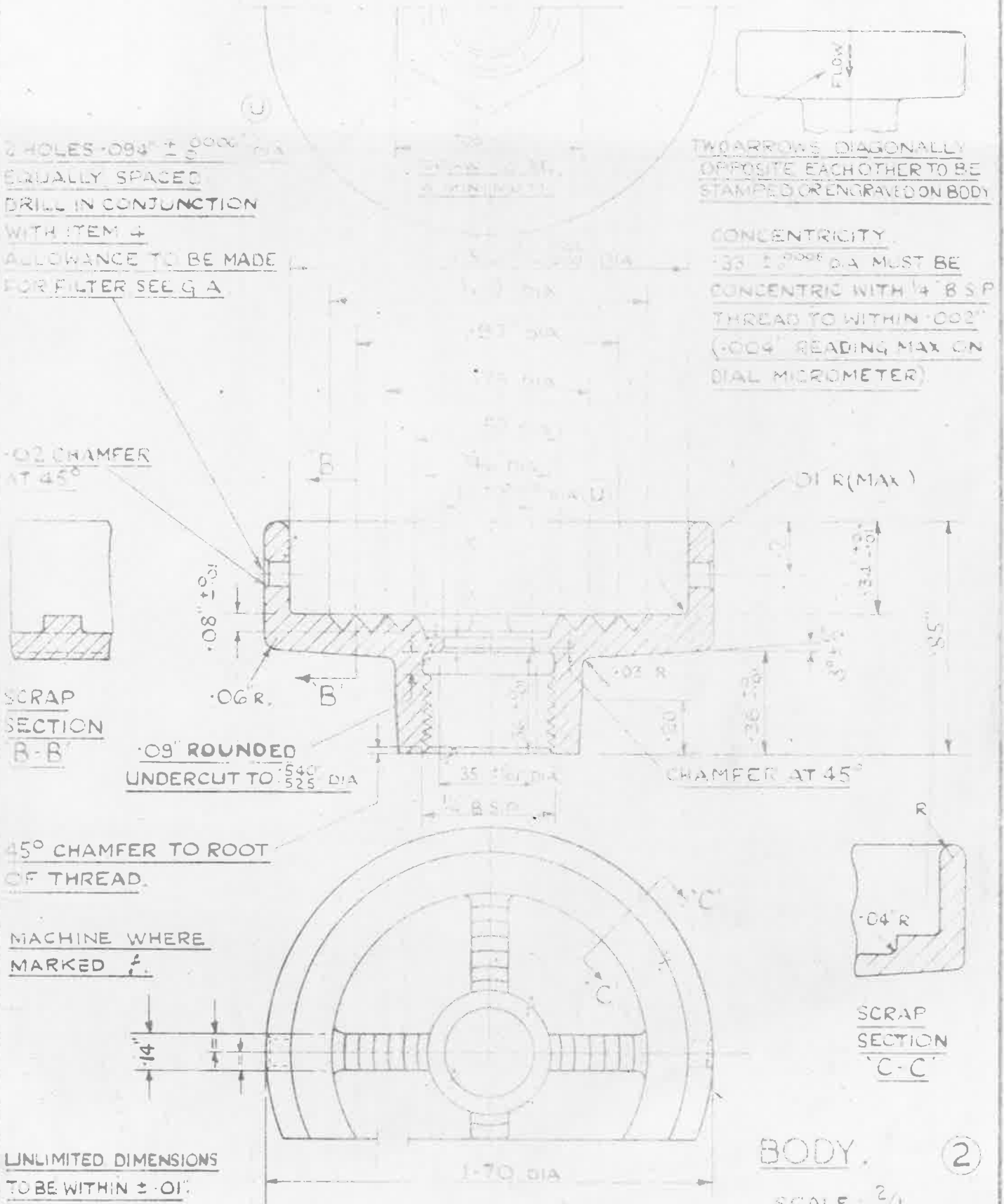
OBSOLESCE

REMOVE BURRS AND
SHARP CORNERS

MINISTRY OF
SUPPLY

AGS. N^o 1210

SHEET N^o 3 N^o OF SHEETS



LIMITS SPECIFIED BY LETTER ARE TO B.S. SPEC. N^o 164 (LATEST ISSUE)

MATERIAL: BRASS TO B.S. SPEC. N^o 218 (LATEST ISSUE)

FINISH: TO BE ELECTRO-TINNED, THICKNESS NOT LESS THAN $.0003$ "
NOTE: PLATING TO BE CARRIED OUT BY EITHER THE ALKALINE
SODIUM STANNATE BATH (WITHOUT ADDITION OF GLUE OR
OTHER ORGANIC COMPOUNDS), OR BY THE ACID STANNOUS
SULPHATE PROCESS.

NOTE: SCREW THREADS TO B.S. SPEC. N^o 84 - 1940, MEDIUM FIT.
STAMPING MUST BE SMOOTH AND FREE FROM FLAWS AND LAPS.

ISSUED BY ROYAL AIRCRAFT ESTABLISHMENT	TITLE: OIL DILUTION VALVE FILTER, FILTER BODY				DRAWN ET R. 20 G 44	TRACED R C. 20 G 44
	ISSUE N ^o	1	2	3	4	CHECKED APPROVED
	ALTERS N ^o					

OBSOLESCE

MINISTRY OF
SUPPLY

AGS. No 1210

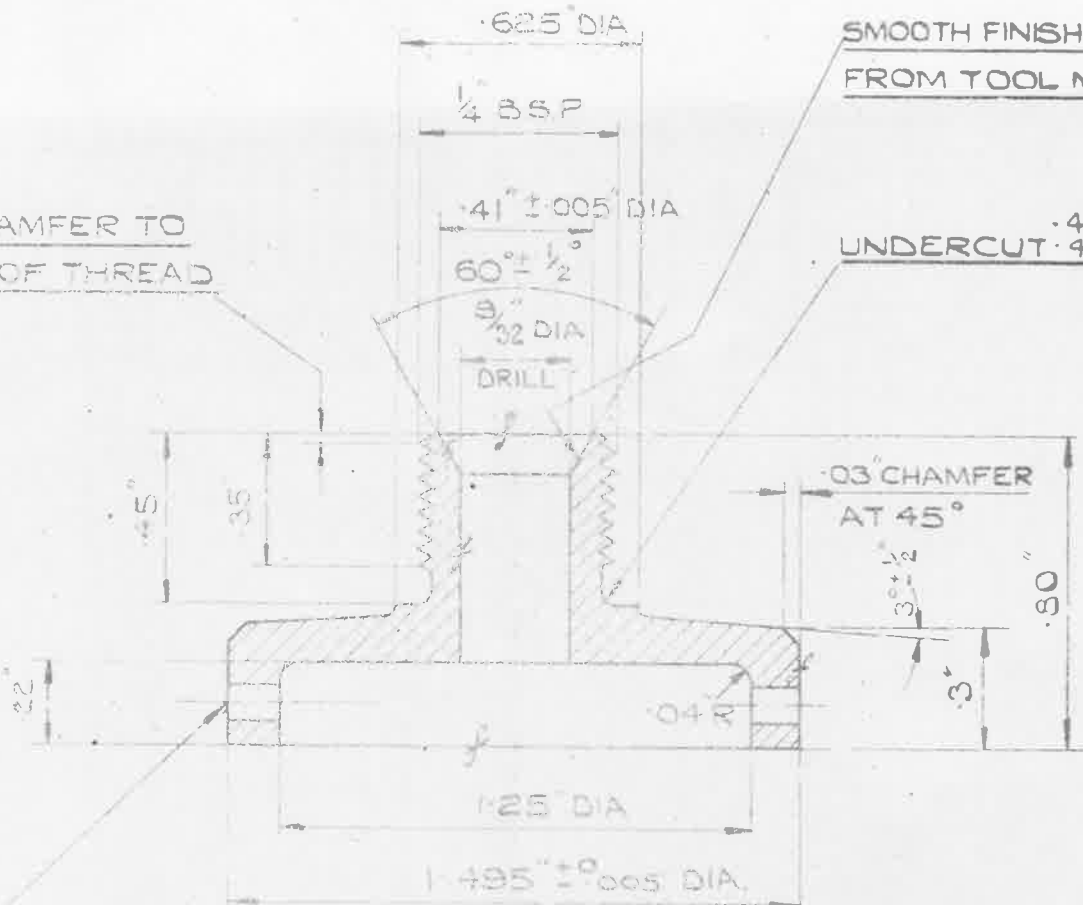
SHEET No 4 No OF SHEETS

REMOVE BURRS AND
SHARP CORNERS

SMOOTH FINISH FREE
FROM TOOL MARKS

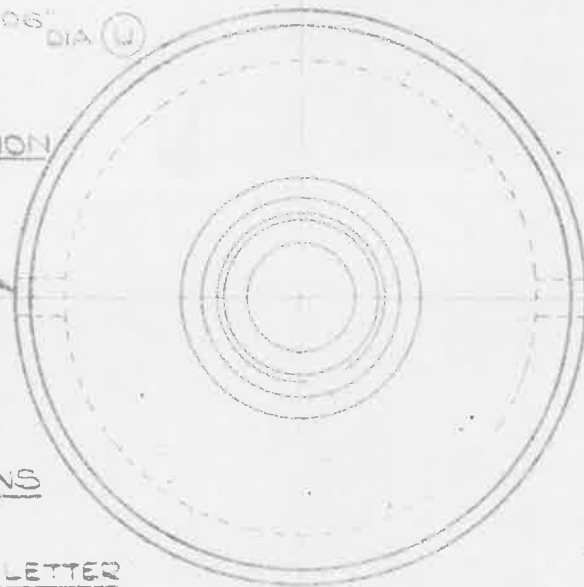
45° CHAMFER TO
ROOT OF THREAD

.450" UNDERCUT .435" DIA.



2 - HOLES .094 ± 0.0005" DIA (U)
EQUALLY SPACED
DRILL IN CONJUNCTION
WITH ITEM 2.

MACHINE WHERE
MARKED f



UNLIMITED DIMENSIONS
TO BE WITHIN ± .01
LIMITS SPECIFIED BY LETTER
ARE TO BS SPEC No 164
(LATEST ISSUE)

TOP CAP

SCALE 2/1

MATERIAL :- BRASS TO B.S. SPEC No 218 (LATEST ISSUE)

FINISH :- TO BE ELECTRO-TINNED, THICKNESS NOT LESS THAN .0003"

NOTE :- PLATING TO BE CARRIED OUT BY EITHER THE
ALKALINE SODIUM STANNATE BATH, (WITHOUT ADDITION OF
GLUE OR OTHER ORGANIC COMPOUNDS) OR BY THE ACID
STANNOUS SULPHATE PROCESS.

NOTES :- SCREW THREADS TO B.S. SPEC No 84 - 1940, MEDIUM FIT,
TRUNCATED THREADS TO AMENDMENT No 3 - 1945.
STAMPING MUST BE SMOOTH & FREE FROM FLAWS & LAPS.

ISSUED BY THE ROYAL AIRCRAFT ESTABLISHMENT	TITLE:-- OIL DILUTION VALVE FILTER TOP CAP		DRAWN C.T. Reynolds	TRACED PN 21/6/44
	ISSUE No 1, 2, 3	MOD. No AS/AGS AS/AGS	CHECKED D. J. ...	APPROVED.

REMOVE ALL BURRS.

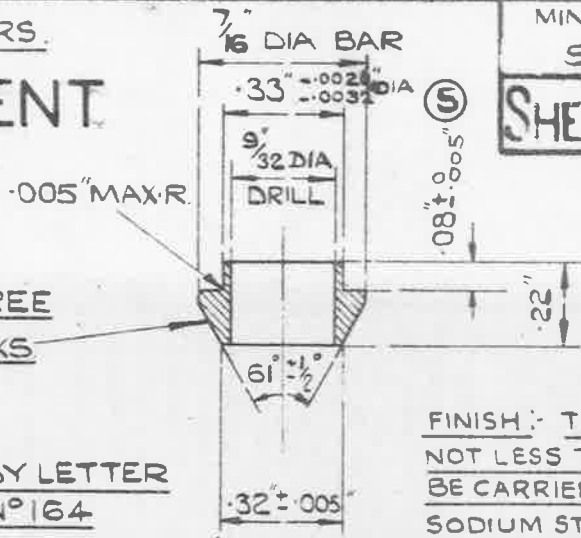
OBSOLESCE

MINISTRY OF SUPPLY

AGS. No 1210.

SHEET No 5

No OF SHEETS



SMOOTH FINISH FREE FROM TOOL MARKS

CONCENTRICITY
CONE & .33" DIA MUST BE CONCENTRIC WITH IN .002" (MAX DIAL MICROMETER READING .004).

FINISH:- TO BE ELECTRO-TINNED, THICKNESS NOT LESS THAN .0003". NOTE:- PLATING TO BE CARRIED OUT BY EITHER THE ALKALINE SODIUM STANNATE BATH (WITHOUT ADDITION OF GLUE OR OTHER ORGANIC COMPOUNDS), OR BY THE ACID STANNOUS SULPHATE PROCESS

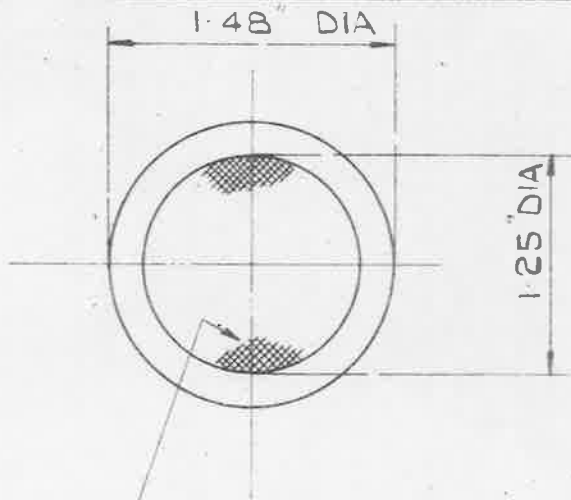
LIMITS SPECIFIED BY LETTER ARE TO B.S. SPEC. No 164 (LATEST ISSUE)

UNLIMITED DIMENSIONS TO BE WITHIN ± .01"

CONE (3)

SCALE 2/1.

MATERIAL:- BRASS TO B.S. SPEC. B.11. (LATEST ISSUE).



28 SW.G (.0148) COPPER RING PRESSED ON TO GAUZE

TWILL WOVEN GAUZE 40 SW.G (.0048") 80 X 80 MESH

FILTER ELEMENT (5)

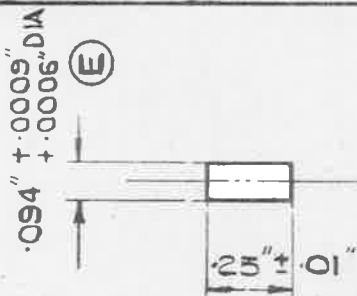
MATERIAL RING COPPER COMMERCIAL QUALITY GAUZE BRASS OR PHOSPHOR BRONZE

FINISH:- NATURAL.

OBSOLESCE

UNLIMITED DIMENSIONS TO BE WITHIN ± .01"

SCALE:- 2/1.



OBSOLESCE

LIMITS SPECIFIED BY LETTER ARE TO B.S. SPEC. No 164 (LATEST ISSUE)

PEG (6)

MATERIAL:- BRASS COMMERCIAL QUALITY

FINISH:- NATURAL

SCALE 2/1.

ISSUED BY THE ROYAL AIRCRAFT

TITLE:- OIL DILUTION VALVE FILTER CONE, ELEMENT & PEG.

DRAWN. CT Reynolds

TRACED PN. 22/6/44.

ISSUE No 1-2-3

CHECKED APPROVED