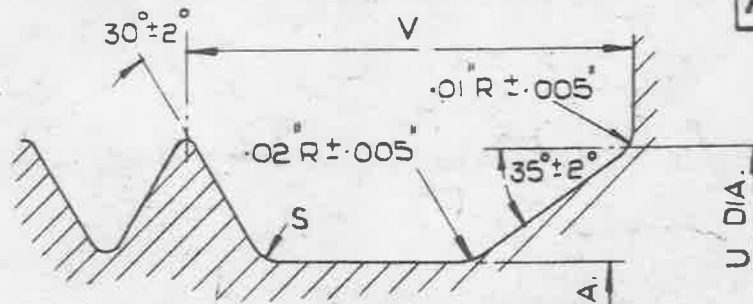
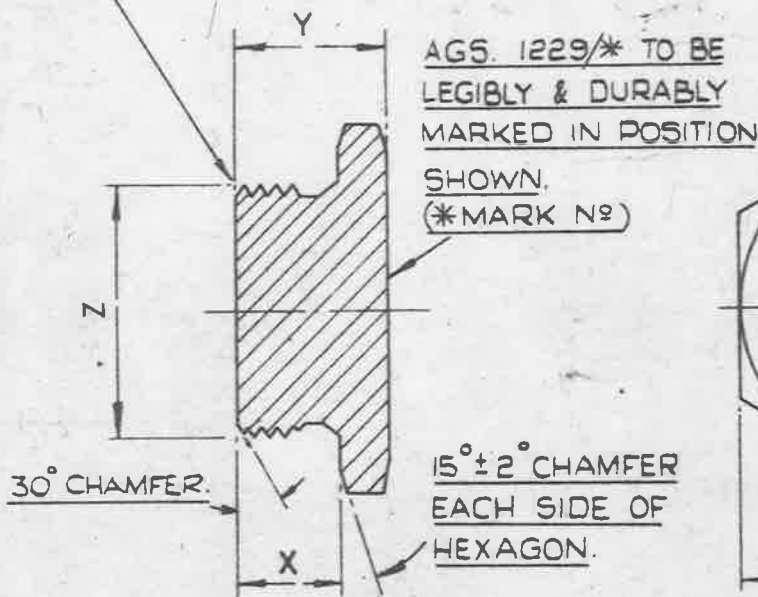


NOTE :-  
 AFTER CHAMFERING,  
 SHARP KNIFE  
 EDGE AND BURRS  
 AT THE START OF  
 THREAD MUST BE  
 FINALLY REMOVED.

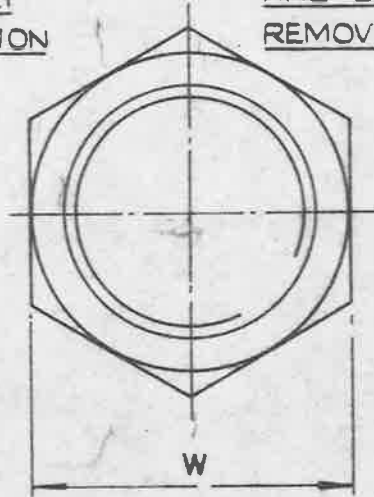


ENLARGED  
 VIEW OF  
 UNDERCUT



AGS. 1229/\* TO BE  
 LEGIBLY & DURABLY  
 MARKED IN POSITION  
 SHOWN.  
 (\*MARK N<sup>o</sup>)

ALL SHARP EDGES  
 AND BURRS TO BE  
 REMOVED.



MARK	Z	Y	X	W		V	U	T	S	JOINT & WASHER A.G.S. 164 MARK.
	B.S. PIPE	+ .02" - 0	+ .01" - .01"	MAX.	MIN.	+ .01" - .01"	+ 0 - .02"	+ 0 - .010"	+ .005" - .005"	
A	1/8"	.45"	.30"	.600"	.595"	.10"	.39"	.330"	.010"	E
B	1/4"	.49"	.32"	.820"	.815"	.14"	.52"	.440"	.010"	F
BB	19 T.P.I. .60" O/D	.50"	.33"	.920"	.915"	.14"	.61"	.525"	.010"	R
C	3/8"	.52"	.34"	.920"	.915"	.14"	.66"	.580"	.010"	A
CC	14 T.P.I. .75" O/D	.56"	.37"	1.100"	1.092"	.18"	.76"	.650"	.015"	S
D	1/2"	.61"	.41"	1.100"	1.092"	.18"	.83"	.720"	.015"	M
E	5/8"	.63"	.42"	1.200"	1.192"	.18"	.91"	.800"	.015"	J
F	3/4"	.66"	.43"	1.390"	1.382"	.18"	1.05"	.940"	.015"	H
G	7/8"	.71"	.46"	1.480"	1.468"	.18"	1.19"	1.085"	.015"	N
H	1"	.79"	.53"	1.670"	1.658"	.23"	1.31"	1.180"	.020"	P
J	1 1/4"	.85"	.55"	2.050"	2.035"	.23"	1.66"	1.520"	.020"	Q
K	1 1/2"	.90"	.59"	2.220"	2.200"	.23"	1.89"	1.750"	.020"	K
M										
P										

MATERIAL :- COMMERCIAL BRASS.

FINISH :- NATURAL.

NOTE :- SCREW THREADS TO B.S. SPEC: 84 (LATEST ISSUE), MEDIUM FIT, TRUNCATED THREADS TO AMENDMENT N<sup>o</sup> 3, 1945, AND AGS. 100. FOR DETAILS OF THREADS FOR MKS. BB & CC, SEE AGS. 100.

TITLE :-

PLUGS, TRANSPORTATION, B. S. P.

ISSUE SR/273  
 ALT. N<sup>o</sup> MOO/AGS 838

MINISTRY OF SUPPLY  
 APPLICATIONS FOR A.G.S. SHEETS TO:-  
 A.T.P. 4A. THAMES HOUSE, MILLBANK, S.W.1.

R.A.E. APPROVAL  
 SIGNATURE DATE  
 G.T. Fairman 7. 12. 50.

AD. S.A.E. APPROVAL  
 SIGNATURE DATE  
 10/3/51

GENERAL INQUIRIES TO:-  
 A.D. S.A.E. THAMES HOUSE, MILLBANK, S.W.1.

SHEET N<sup>o</sup> 1  
 N<sup>o</sup> OF SHEETS 1

A.G.S. N<sup>o</sup> 1229