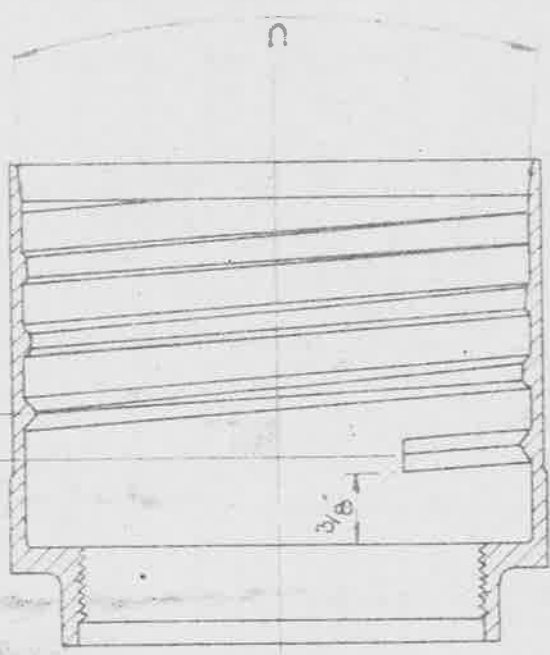


MAX DEPTH OF
THREAD 1/16"

SECTION ILLUSTRATING FORM & PITCH OF THREAD (LEFT HAND) STANDARD ON ALL FERRULES IN RANGE 1/8" - 1 3/4". PITCH OF THREAD (LEFT HAND) ON 2" FERRULES TO BE 3/8", FORM & MAX DEPTH TO REMAIN AS ABOVE TAPER 'U' ON THREADS RANGE 1/8" - 3/4" INCL TO COMMENCE AT START OF THREAD TAPER 'U' ON THREADS RANGE 7/8" - 1 3/4" INCL TO BE MACHINED FROM COMMENCEMENT OF SECOND THREAD, THUS LEAVING ONE COMPLETE THREAD WITH A FULL SECTION (SEE SKETCH FOR DETAILS OF TAPER 'U' & COMMENCEMENT OF THREAD ON 2" FERRULE)

.25 OF FULL THREAD FOR 2" FERRULE ONLY



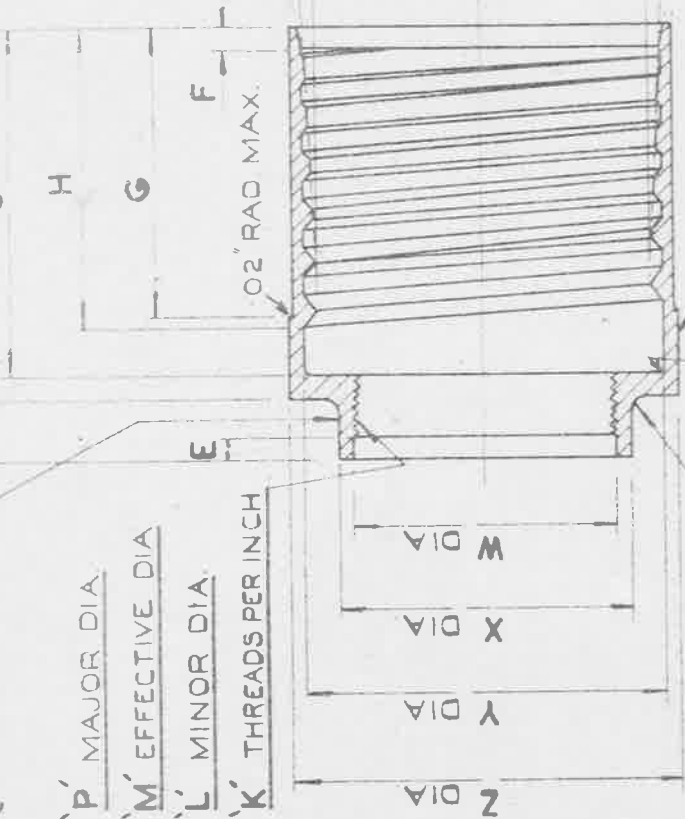
DETAILS OF THREAD & TAPER 'U'
FOR 2" FERRULE

NOTE: ALL SHARP EDGES AND
BURRS TO BE REMOVED

3

BASED ON DRAWINGS SUPPLIED BY
THOS. BOORN & CO. LTD, CLAPHAM SW 4
IT IS CLAIMED THAT THIS DESIGN IS PATENTED

A.G.S. 1233/* TO BE
LEGIBLY & DURABLY
MARKED IN POSITION
SHOWN
(*MARK)



MEDIUM DIAMOND KNURL
ON THIS FACE

MATERIAL: LIGHT ALLOY TO SPEC: DTD 423 (LATEST ISSUE)

FINISH: TO BE ANODISED IN ACCORDANCE WITH
SPEC: D.T.D. 910 (LATEST ISSUE)

NOTE: SCREW THREADS TO B.S. SPEC 84-1940 FREE FIT.

TITLE: - FERRULE, RE-USABLE END
FITTINGS FOR NON-FIRE RESISTANT
HOSE TO SPEC: N° D.T.D. (RDD) 3951

MINISTRY OF SUPPLY
APPLICATIONS FOR A.G.S. SHEETS TO:
A.T.P.4A. THAMES HOUSE, MILLBANK, S.W.1.

GENERAL INQUIRIES TO:-
A.D.S.A.E. THAMES HOUSE, MILLBANK, S.W.1.

ISSUE	1				
ALT. N°	MOD/AGS 786				
R.A.E. APPROVAL		A.D. S.A.E. APPROVAL			
SIGNATURE	DATE	SIGNATURE	DATE		
<i>C.S. R...</i>	28.10.49	<i>C.I. T...</i>	19/12/49		
SHEET N°	1	A.G.S. N° 1233			
N° OF SHEETS	2				

MARK	1/DIA OF HOSE	Z	Y	X	W	V	U	T	S	R	Q	P
		+0.015 -0	±.002	±.005	+0.002 -0	±.005		+0.005 -0		±.005	+0.010 -0	MAJOR DIA. MIN.
A	1/8"	.750	.625	.375	.251"	.500	9°	.707	20°	1.500	1.219	.2500
B	1/4"	.875	.750	.485	.360	.625	9°	.832	20°	1.500	1.219	.3590
C	3/8"	1.000	.875	.610	.485	.750	9°	.957	20°	1.500	1.219	.4840
D	1/2"	1.125	1.000	.735	.610	.875	9°	1.082	15°	1.500	1.219	.6090
E	5/8"	1.250	1.125	.859	.724	1.000	9°	1.207	15°	1.500	1.219	.7230
F	3/4"	1.375	1.250	1.015	.869	1.125	9°	1.332	15°	1.500	1.219	.8680
G	7/8"	1.500	1.375	1.125	.985	1.250	13°	1.457	15°	1.625	1.313	.9840
H	1"	1.656	1.500	1.266	1.110	1.375	13°	1.625	20°	1.625	1.313	1.1090
J	1 1/4"	2.031	1.875	1.531	1.376	1.750	6°	2.000	20°	2.250	1.938	1.3750
K	1 1/2"	2.281	2.125	1.782	1.626	2.000	5°	2.250	20°	2.375	2.063	1.6250
L	1 3/4"	2.531	2.375	2.040	1.881	2.250	5°	2.500	20°	2.375	2.063	1.8800
M	2"	2.812	2.656	2.281	2.126	2.531	7°	2.780	15°	2.500	2.125	2.1250

25

MARK	M			L			TH'DS PER INCH.	+0 -0.010	±.005	±.005	±.005	±.005
	EFFECTIVE DIAMETER			MINOR DIAMETER								
	MAX.	TOL.	MIN.	MAX.	TOL.	MIN.						
A	.2310	.0056	.2254	.2125	.0117	.2008	26	1.125	.875	.869	.093	.125
B	.3411	.0067	.3344	.3231	.0133	.3098	26	1.125	.875	.969	.093	.125
C	.4661	.0067	.4594	.4481	.0133	.4348	26	1.125	.875	.969	.093	.125
D	.5915	.0071	.5844	.5731	.0133	.5598	26	1.125	.875	.875	.125	.125
E	.7055	.0071	.6984	.6871	.0133	.6738	26	1.125	.875	.875	.125	.125
F	.8509	.0075	.8434	.8321	.0133	.8188	26	1.125	.875	.844	.125	.125
G	.9669	.0075	.9594	.9481	.0133	.9348	26	1.218	.969	.937	.125	.125
H	1.0919	.0075	1.0844	1.0731	.0133	1.0598	26	1.218	.969	.937	.125	.125
J	1.3512	.0082	1.3430	1.3280	.0170	1.3110	20	1.812	1.562	1.500	.125	.125
K	1.6012	.0082	1.5930	1.5780	.0170	1.5610	20	1.937	1.687	1.625	.125	.125
L	1.8562	.0082	1.8480	1.8330	.0170	1.8160	20	1.937	1.687	1.562	.125	.125
M	2.1017	.0087	2.0930	2.0780	.0170	2.0610	20	2.000	1.625	1.625	.187	.125

TITLE: - FERRULE, RE-USABLE END FITTINGS FOR NON-FIRE RESISTANT HOSE TO SPEC: N° D.T.D. (R.D.) 3951

ISSUE
ALT. N° MOD/AGE
786

MINISTRY OF SUPPLY
APPLICATIONS FOR A.G.S. SHEETS TO:
ATP.4A. THAMES HOUSE, MILLBANK, S.W.1
GENERAL INQUIRIES TO:-
AD.S.AE. THAMES HOUSE, MILLBANK, S.W.1

R.A.E. APPROVAL
SIGNATURE DATE
SHEET N° 2
N° OF SHEETS 2
AD. S.A.E. APPROVAL
SIGNATURE DATE
A.G.S. N° 1233