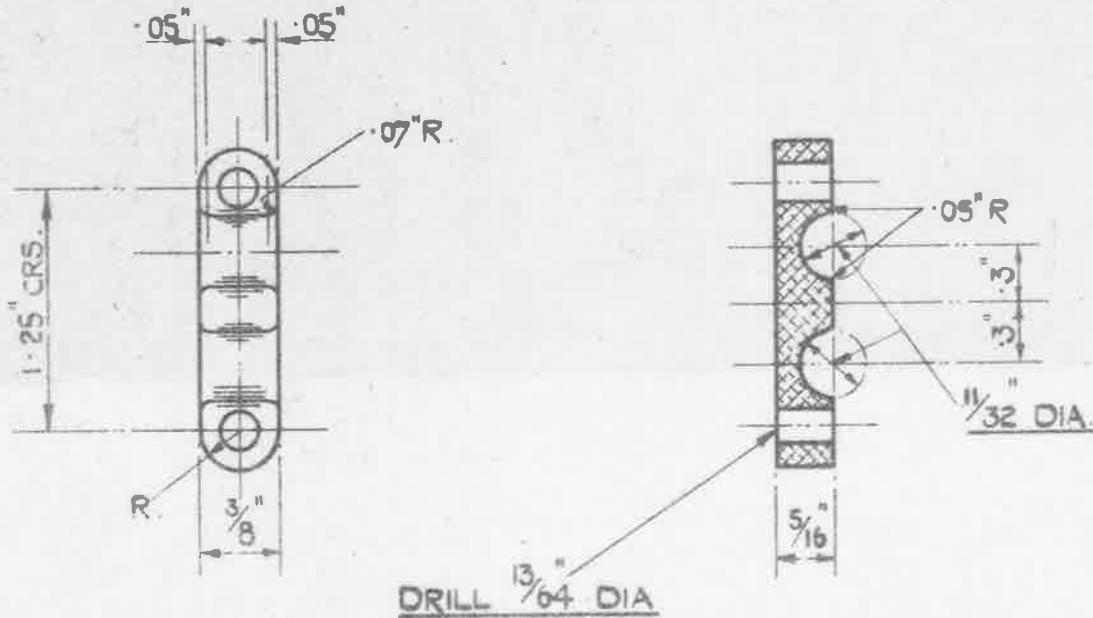


27.6.46  
Ref: A98:161.

**OBSOLESCE**

NO FURTHER MANUFACTURE.  
EXISTING STOCKS TO BE USED UP.



PART C.

TOLERANCE ON ALL  
DIMENSIONS ± 0.05"

DIE CASTING.

MATL.:- ALUM ALLOY L.33. (LATEST ISSUE)

FINISH:- NAT'L RAL.

CLASS 3 CASTING SEE DRG. NO. A.D. 15528-3. (LATEST ISSUE)

MINISTRY OF SUPPLY  
APPLICATIONS FOR A.G.S.  
SHEETS TO A.T.P. 4,  
CHESSINGTON, SURREY.  
GENERAL ENQUIRIES TO  
A.O/S.A.E, 57 GILES COURT,  
1-13 ST GILES HIGH STREET,  
LONDON, W.C.2.

**TITLE:-**  
**CABLE BONDING CLAMPS.**  
SM 625

RE-DRAWN  
C.T. Reynolds.

RE-TRACED  
*m2 Jones*  
15.3.46

ISSUE NO	10			
ALTER-N NO	MOD. NO	MOD. AGS		
	AGS/615	931		
		5.40		

CHECKED  
*[Signature]*

APPROVED  
*[Signature]*  
5/4/46