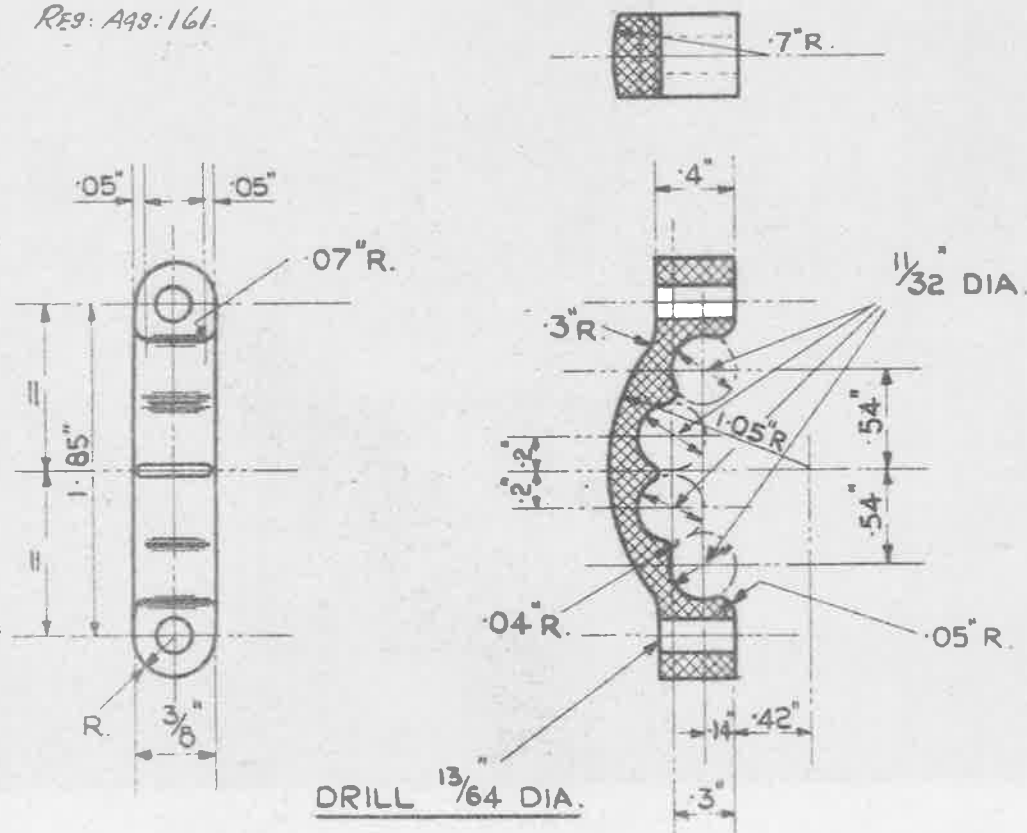


27-6-46  
REF: A93:161.



PART. A.

TOLERANCE ON ALL  
DIMENSIONS ± .005"

**OBSOLESCENT**

NO FURTHER MANUFACTURE.  
EXISTING STOCKS TO BE USED UP.

DIE - CASTING.

MATL: - ALUM<sup>n</sup>. ALLOY TO B.S. SPEC: L.33. (LATEST ISSUE).

FINISH: - NATURAL.

CLASS 3 CASTING, SEE DRG. N<sup>o</sup>. A.D. 15528-3, (LATEST ISSUE).

26-7-46 SM 625

ISSUE N<sup>o</sup> 9 10

ALT<sup>s</sup> N<sup>o</sup> MOD. N<sup>o</sup> MOD/AGS  
AGS/615 931

MINISTRY OF SUPPLY  
APPLICATIONS FOR AGS SHEETS  
TO A.T.P.4, CHESSINGTON, SURREY.  
GENERAL ENQUIRIES TO  
A.D./S.A.E., ST GILES COURT,  
1-13 ST GILES HIGH STREET,  
LONDON, W.C.2

TITLE:-  
CABLE BONDING CLAMPS.

RE-DRAWN.  
C.T.Reynolds.

RE-TRACED  
SAWJ.  
27-3-46

CHECKED  
*J.M. 15/11/46*

APPROVED.  
*J.M. 15/11/46*