

NOTE:- BEFORE ASSEMBLY REMOVE METAL BRAIDING AND ALSO CAMBRIC FOR A DISTANCE OF 33 MM. AND BARE CABLE FOR A DISTANCE OF 10.5 MM.

BASED ON B.T.H. DESIGN.

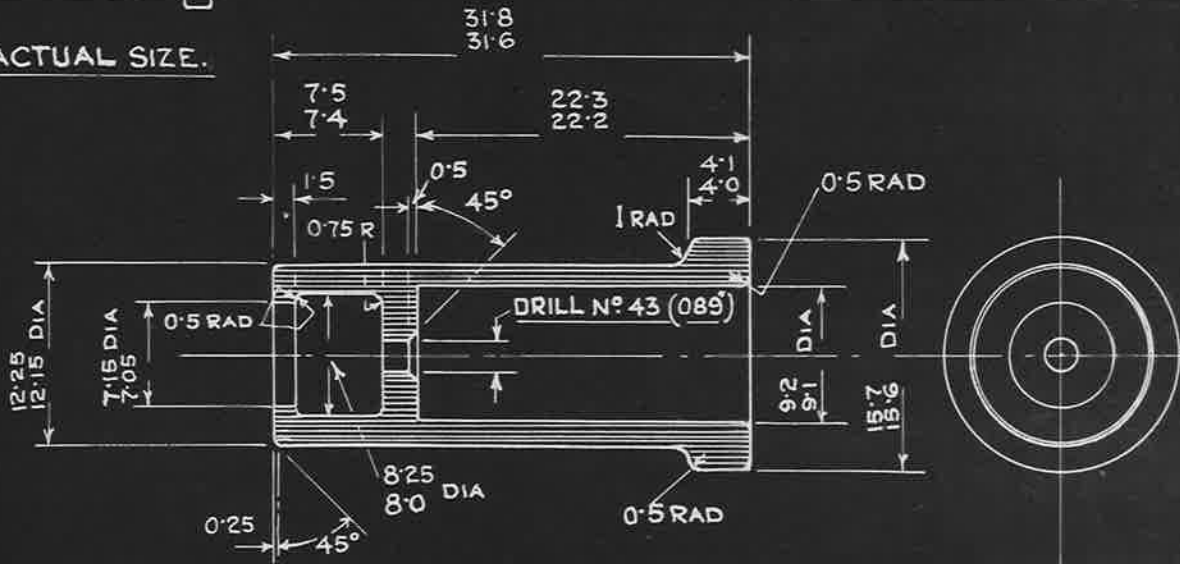
ONE COMPLETE ASSEMBLY CONSISTS OF THE FOLLOWING PARTS:-

PART NO	DRAWING NO	DESCRIPTION	QUANTITY	REMARKS
1	A.G.S. 1505-1	CABLE SLEEVE.	1	
2	A.G.S. 1505-2	PLUNGER	1	
3	A.G.S. 1505-3	SPRING.	1	
4	A.G.S. 1624-4	NIPPLE OUTER	1	
5	A.G.S. 1624-5	NIPPLE INNER	1	

ISSUED BY DRAWING OFFICE DIRECTORATE OF TECHNICAL DEVELOPMENT AIR MINISTRY	TITLE— <u>TERMINAL (SPRING LOADED TYPE)</u> <u>FOR MAGNETO 9<sup>m</sup>/M. H.T. CABLE.</u> <u>ARRANGEMENT.</u>		RETRACED FOR A.P.C. <i>W.S. 19/11/36</i>	DRAWN <i>JW BRASHER</i>	TRACED <i>D.C. 18-10-36.</i>
	ISSUE No.	<i>1</i>		CHECKED	APPROVED
	ALTERATION	<i>MOD NO AGS 333</i>			



ACTUAL SIZE.



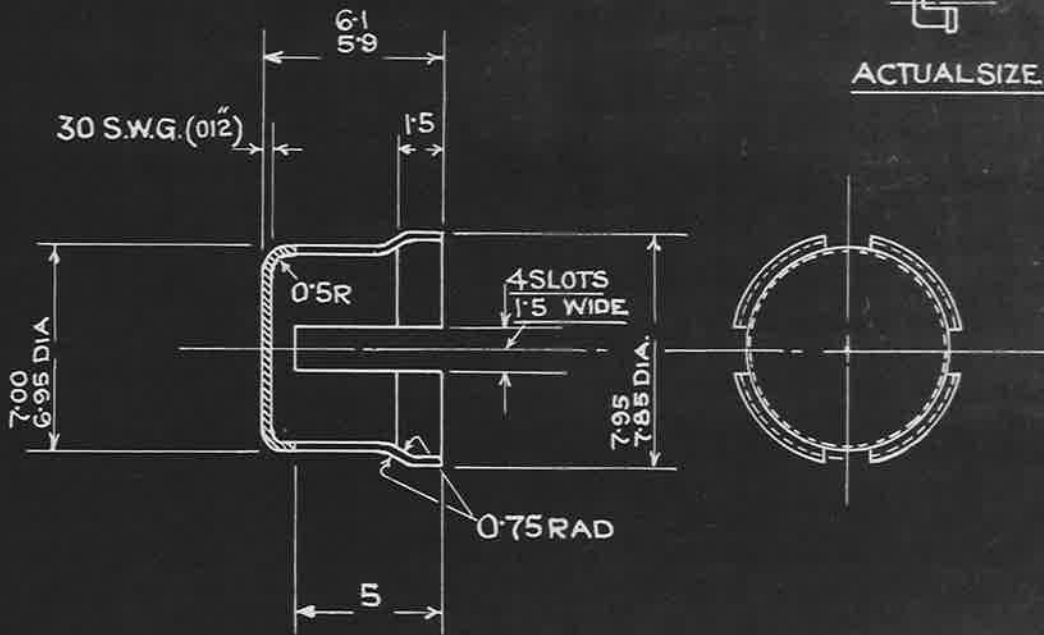
SCALE: - 2/1

ALL DIMENSIONS ARE IN MILLIMETRES EXCEPT WHERE SHOWN OTHERWISE.  
 MATERIAL TO BE LOADED HARD RUBBER AND IN ACCORDANCE WITH  
 SPECIFICATION OUTLINED ON DRAWING N° E&I.4016 (LATEST ISSUE)

1 CABLE SLEEVE



ACTUAL SIZE.



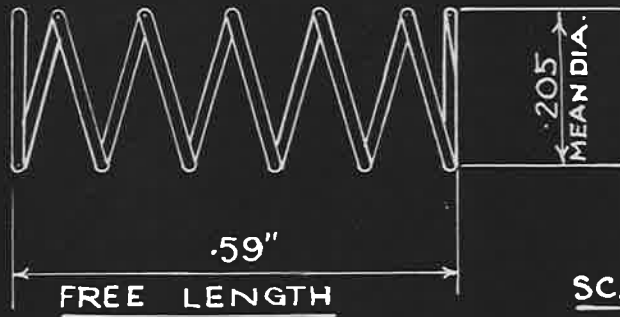
SCALE: - 4/1

ALL DIMENSIONS ARE IN MILLIMETRES, EXCEPT WHERE SHOWN OTHERWISE.  
 MATERIAL: - STEEL TO SPECIFICATION D.T.D. 171. (LATEST ISSUE.)

2 PLUNGER

ISSUED BY DRAWING OFFICE DIRECTORATE OF TECHNICAL DEVELOPMENT AIR MINISTRY	TITLE— TERMINAL (SPRING LOADED TYPE) FOR MAGNETO 9M HT. CABLE - DETAILS.				RETRACED FOR A.F.C. J.S.G. VIC RLYE	DRAWN <i>J.H. Bracken</i>	TRACED D. CROSSON 15. 10. 36.
	ISSUE No.	1				CHECKED <i>W. H. ...</i>	APPROVED <i>G. ...</i>
	ALTERATION	A.G.S./333 12.9.39.					

END COILS WOUND FLAT AND SQUARE WITH AXIS OF SPRING



DIAM OF WIRE	28 S.W.G. (.0148)	NOTE :- THE LOAD REQUIRED TO COMPRESS SPRING TO ITS WORKING LENGTH MUST BE WITHIN 7/8 OZ. MAX. AND 5 13/16 OZ. MIN.
NUMBER OF FREE COILS	5	
RATE IN LB. INCH.	175	
LENGTH IN POSITION LOAD IN POSITION.	.36" 6 1/2 OZ.	

MATERIAL :- STEEL WIRE TO SPECIFICATION DTD 326 (LATEST ISSUE)

(3) SPRING

ISSUED BY DRAWING OFFICE DIRECTORATE OF TECHNICAL DEVELOPMENT AIR MINISTRY	TITLE— <u>TERMINAL (SPRING LOADED TYPE)</u> FOR MAGNETO 9 M H.T. CABLE DETAIL					RETRACED FOR A.P.C. W.H.D. 17.9.41	DRAWN <i>P. B. B. B.</i>	TRACED
	ISSUE No.	1.				CHECKED <i>P. D. Shiple</i>	APPROVED <i>G. V. Sarnik</i>	
	ALTERATION							

