

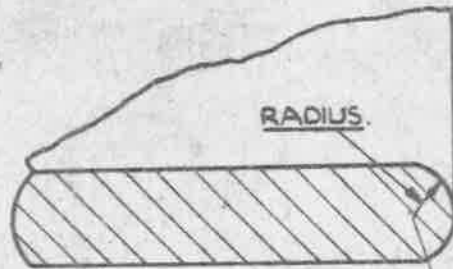
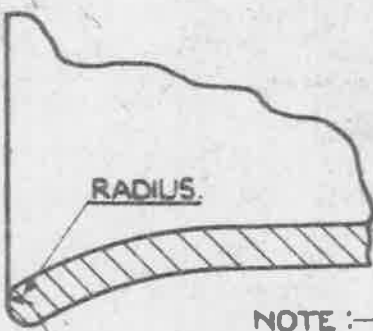
**OBSOLESCE** - NOT TO BE USED  
IN NEW DESIGN WORK. SEE S.D.M. 267.

MINISTRY OF  
SUPPLY

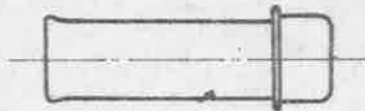
AGS. No. 1511.

SHEET No 1

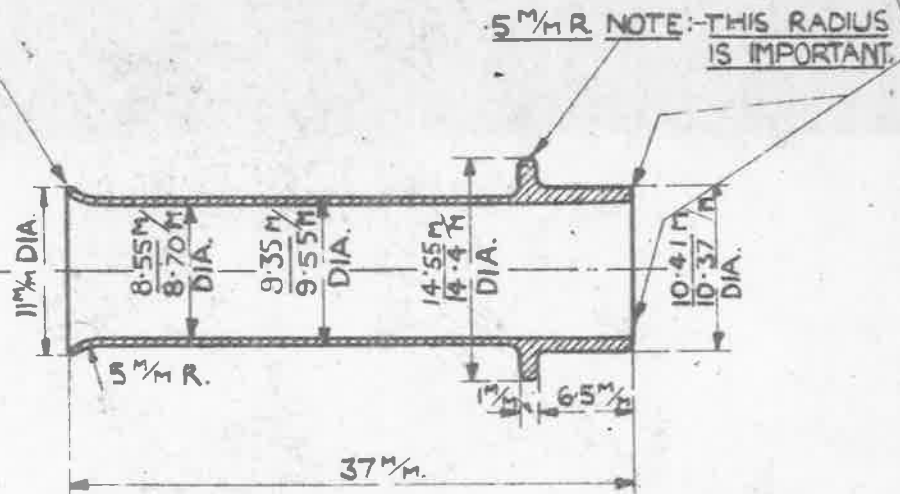
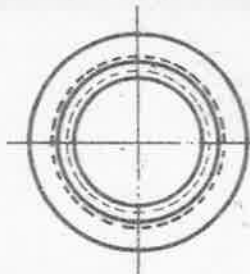
NO OF SHEETS 1



**NOTE:- THIS IS IMPORTANT.**  
**ENDS MUST BE ROUNDED OFF**  
**AS SHOWN IN ENLARGED VIEWS.**



**FULL SIZE VIEW OF SLEEVE.**



**SCALE:-**  $\frac{2}{1}$

**MATL:- BRASS TUBE — COMMERCIAL QUALITY.**

**FINISH:- TO BE ELECTRO - TINNED, THICKNESS NOT LESS THAN .0002".**

ISSUED BY  
ROYAL  
AIRCRAFT  
ESTABLISHMENT

**TITLE:- SLEEVES, BONDING, METAL BRAIDED  
CABLE, H.T. INNER, STRAIGHT, LONG.**

**DRAWN  
NICHOLS.**

**RE-TRACED  
DEYORK. 28.12.35**

**ISSUE NO**

6<sup>13</sup>  
47

7

8

**CHECKED**

G.H. 12-1-25

**APPROVED**

G.E. BAIRSTON  
14-1-25.

**ALTERATION NO**

AS/AGS  
662

AS/AGS  
RER 874

MOD/AGS  
SM 780

RE: CH: R B BASTABLE

SM 458 SM 780

