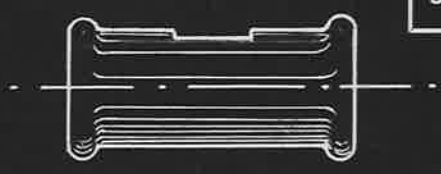
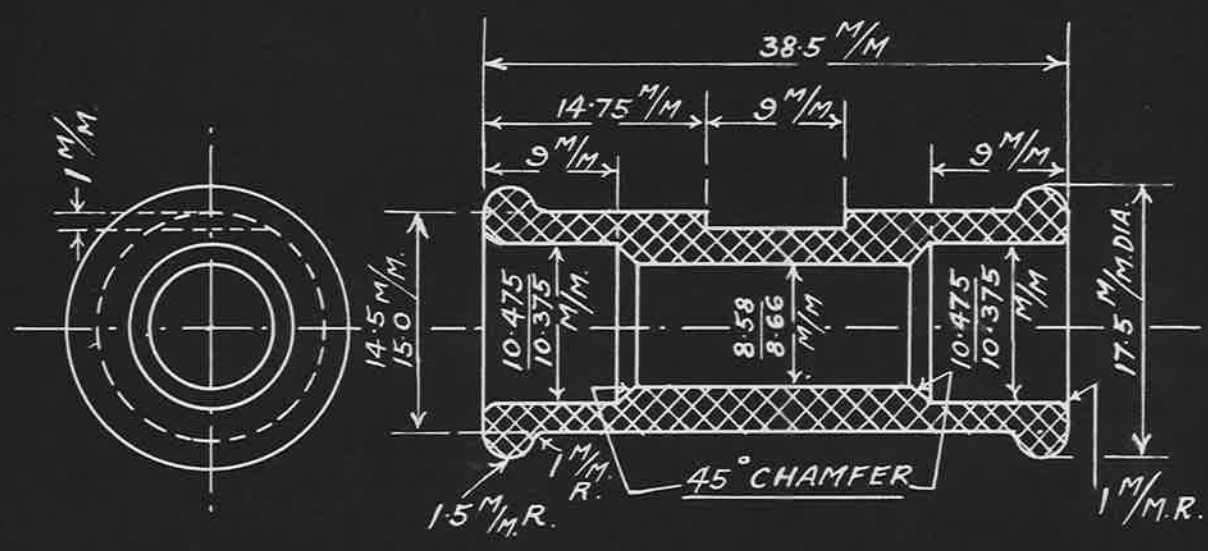


24-3-25
A.F. Penn.



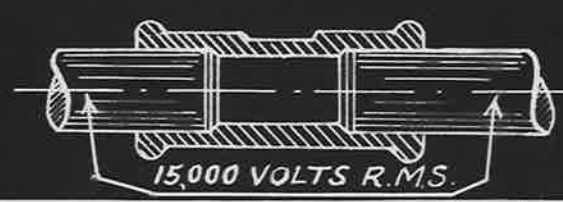
FULL SIZE VIEW OF H.T. INSULATING SLEEVE



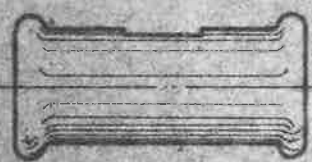
SCALE 2/1

SPECIFICATION

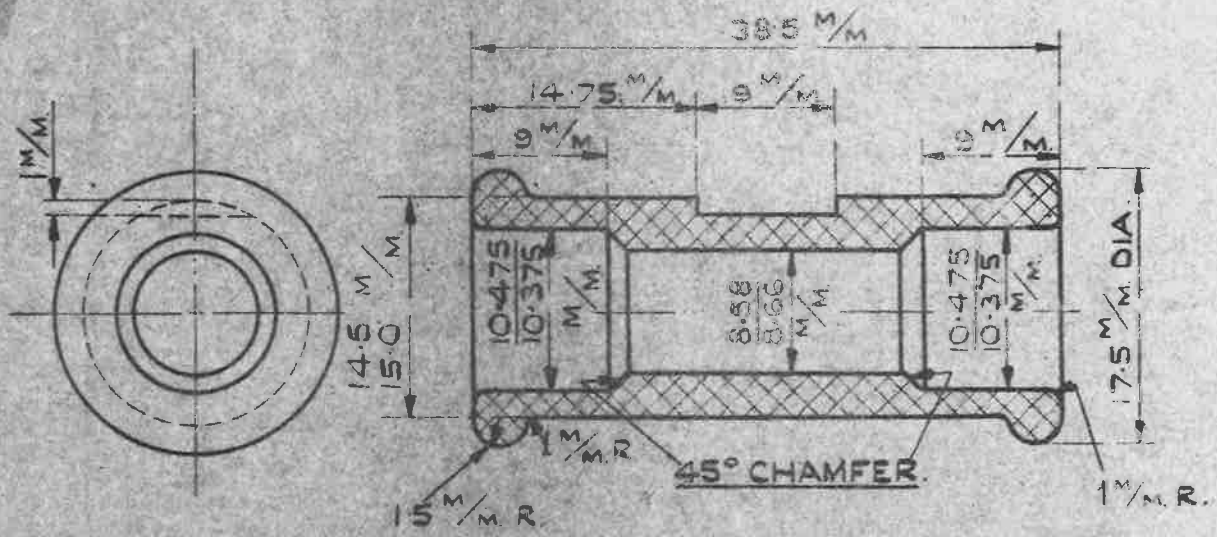
- (1) THE SLEEVES SHALL BE MOULDED TO THE DIMENSIONS SHOWN, IN "SYNTHETIC RESIN COMPOUND" OF AN APPROVED GRADE AND MUST BE FREE FROM CRACKS OR FLAWS.
- (2) 1% OF EACH DAY'S PRODUCTION IS TO BE SUBJECTED TO THE MECHANICAL TEST SPECIFIED & SUCH PRODUCTION WILL BE ACCEPTED PROVIDED THE MAJORITY GIVE A BREAKING LOAD OF NOT LESS THAN 30 LBS/INCHES, TAKEN ON EACH END OF THE MOULDING, SHOULD THE SLEEVES FAIL TO PASS THIS TEST THEN A FURTHER 2% SHALL BE TAKEN & THE CONDITION AS ABOVE COMPLIED WITH OTHERWISE REJECTION OF THE WHOLE PRODUCTION WILL BE MADE.
- (3) AFTER IMMERSION IN WATER FOR 24 HOURS THE SLEEVES SHALL ON BEING WIPED DRY WITHSTAND WITHOUT FLASHING OVER AN A.C. POTENTIAL OF 15,000 VOLTS (R.M.S.) APPLIED BETWEEN ELECTRODES AS SHOWN IN THE SKETCH.



ISSUED BY DRAWING OFFICE DIRECTORATE OF TECHNICAL DEVELOPMENT AIR MINISTRY	TITLE—H.T. INSULATING SLEEVE. (PLUG END)		RETRACED FOR A.P.C. S.A.M.C. <i>CHIKO</i> 22-9-41	DRAWN <i>Nichols</i>	TRACED <i>B.P.</i> 2-7-37.
	ISSUE No.	<i>6</i> <i>7</i>		CHECKED	APPROVED
	ALTERATION	<i>A.G.S. 141</i> <i>45 A.G.S. 168</i>			



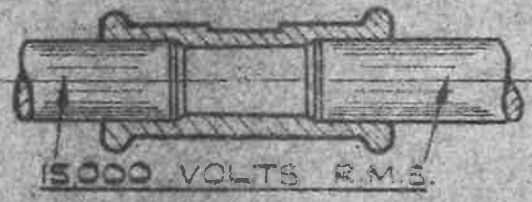
FULL SIZE VIEW OF H.T. INSULATING SLEEVE.



SCALE: - 2/1

SPECIFICATION:-

- (1) THE SLEEVES SHALL BE MOULDED TO THE DIMENSIONS SHOWN IN "SYNTHETIC RESIN COMPOUND" OF AN APPROVED GRADE AND MUST BE FREE FROM CRACKS OR FLAWS.
- (2) 1% OF EACH DAY'S PRODUCTION IS TO BE SUBJECTED TO THE MECHANICAL TEST SPECIFIED & SUCH PRODUCTION WILL BE ACCEPTED PROVIDED THE MAJORITY GIVE A BREAKING LOAD OF NOT LESS THAN 30LB / INCHES TAKEN ON EACH END OF THE MOULDING, SHOULD THE SLEEVES FAIL TO PASS THIS TEST THEN A FURTHER 2% SHALL BE TAKEN & THE CONDITION AS ABOVE COMPLIED WITH OTHERWISE REJECTION OF THE WHOLE PRODUCTION WILL BE MADE.
- (3) AFTER IMMERSION IN WATER FOR 24 HOURS THE SLEEVES SHALL ON BEING WIPED DRY WITHSTAND WITHOUT FLASHING OVER AN A.C. POTENTIAL OF 15,000 VOLTS (R.M.S.) APPLIED BETWEEN ELECTRODES AS SHOWN IN THE SKETCH.



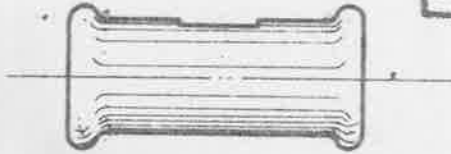
ISSUED BY ROYAL AIRCRAFT ESTABLISHMENT	TITLE - SLEEVES, INSULATING CABLE, H.T. BLACK AND RED.		DRAWN NICHOLS	RE-TRACED FHEWETT
	ISSUE NO. 1	7	8	11-19
	ALTERATION NO. 1	2	3	4
		1853		GW 12-1-28
		SM456	CHECKED G.S. 12-1-28	APPROVED G.W. 12-1-28
			RE-CH J. MILLS 17-1-28	
			R. B. HASTABLE	

OBSOLESCE-NOT TO BE USED
IN NEW DESIGN WORK. SEE S.D.M. 267.

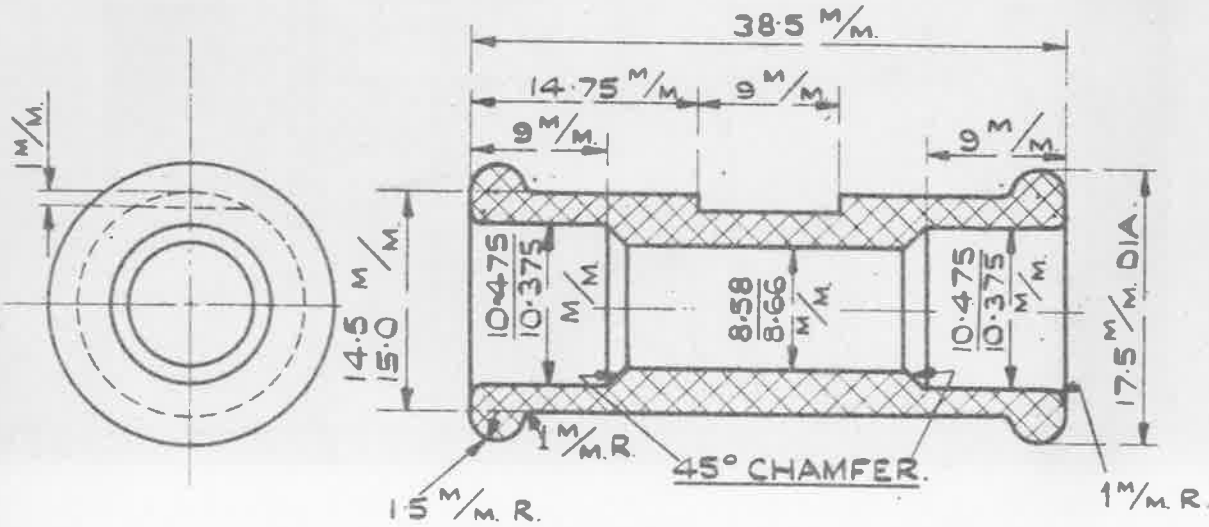
MINISTRY OF
SUPPLY.

AGS.No. 1515.

SHEET No. 1 | No. OF SHEETS 1



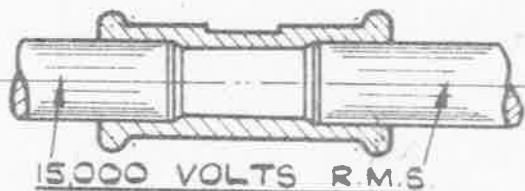
FULL SIZE VIEW OF H.T. INSULATING SLEEVE.



SCALE: - 2/1

SPECIFICATION:-

- (1) THE SLEEVES SHALL BE MOULDED TO THE DIMENSIONS SHOWN, IN "SYNTHETIC RESIN COMPOUND" OF AN APPROVED GRADE AND MUST BE FREE FROM CRACKS OR FLAWS.
- (2) 1% OF EACH DAY'S PRODUCTION IS TO BE SUBJECTED TO THE MECHANICAL TEST SPECIFIED & SUCH PRODUCTION WILL BE ACCEPTED PROVIDED THE MAJORITY GIVE A BREAKING LOAD OF NOT LESS THAN 30LB / INCHES, TAKEN ON EACH END OF THE MOULDING, SHOULD THE SLEEVES FAIL TO PASS THIS TEST THEN A FURTHER 2% SHALL BE TAKEN & THE CONDITION AS ABOVE COMPLIED WITH OTHERWISE REJECTION OF THE WHOLE PRODUCTION WILL BE MADE.
- (3) AFTER IMMERSION IN WATER FOR 24 HOURS THE SLEEVES SHALL ON BEING WIPED DRY WITHSTAND WITHOUT FLASHING OVER AN A.C. POTENTIAL OF 15,000 VOLTS (R.M.S.) APPLIED BETWEEN ELECTRODES AS SHOWN IN THE SKETCH.



15,000 VOLTS R.M.S.

ISSUED BY ROYAL AIRCRAFT ESTABLISHMENT	TITLE: - SLEEVES, INSULATING CABLE, H.T. BLACK AND RED.				DRAWN NICHOLS.	RE-TRACED F. HEWETT 11-1-39	
	ISSUE No	6	7	8	9	CHECKED G.S. 12-1-28	APPROVED G.W. 12-7-37
	ALTERATION No	AGS 141	AGS 168	AS/AGE 853	MOD/AGS 974	RE-CH MILLS 72-12	
		JM	7.10.22	SM45	SM180	R.B. BASTABLE	