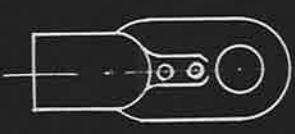
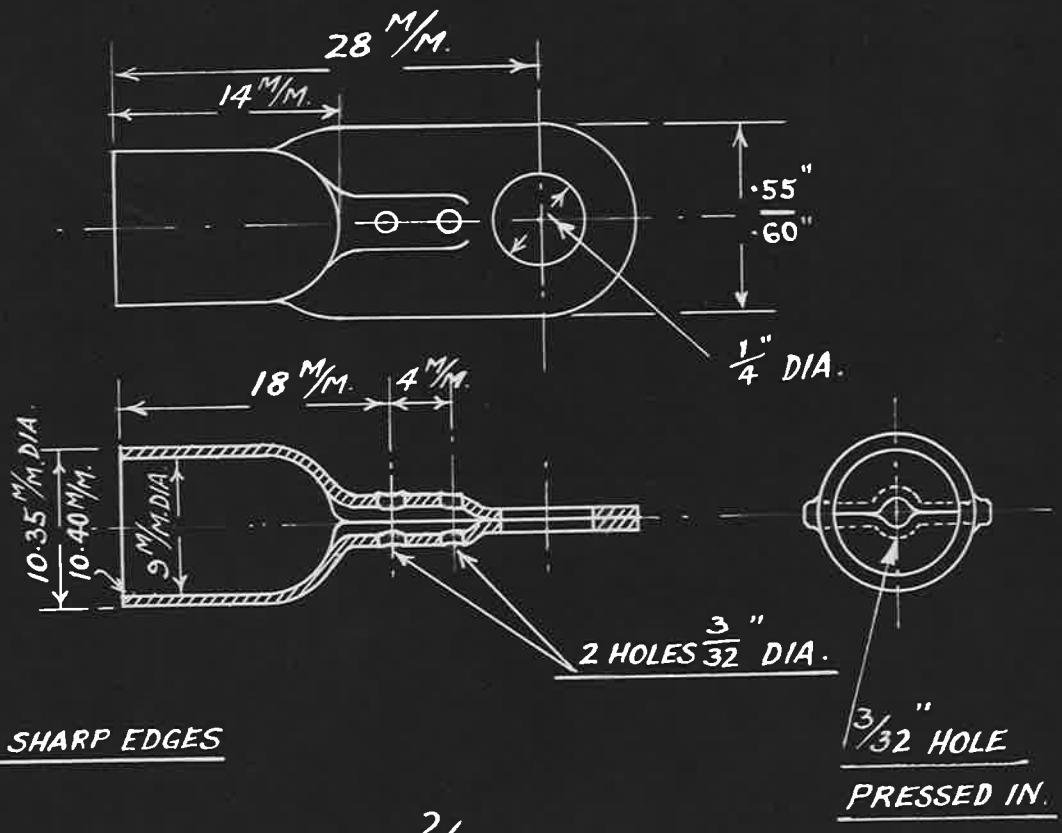


24 3 25
A. E. PENN.



FULL SIZE VIEW OF TERMINAL END



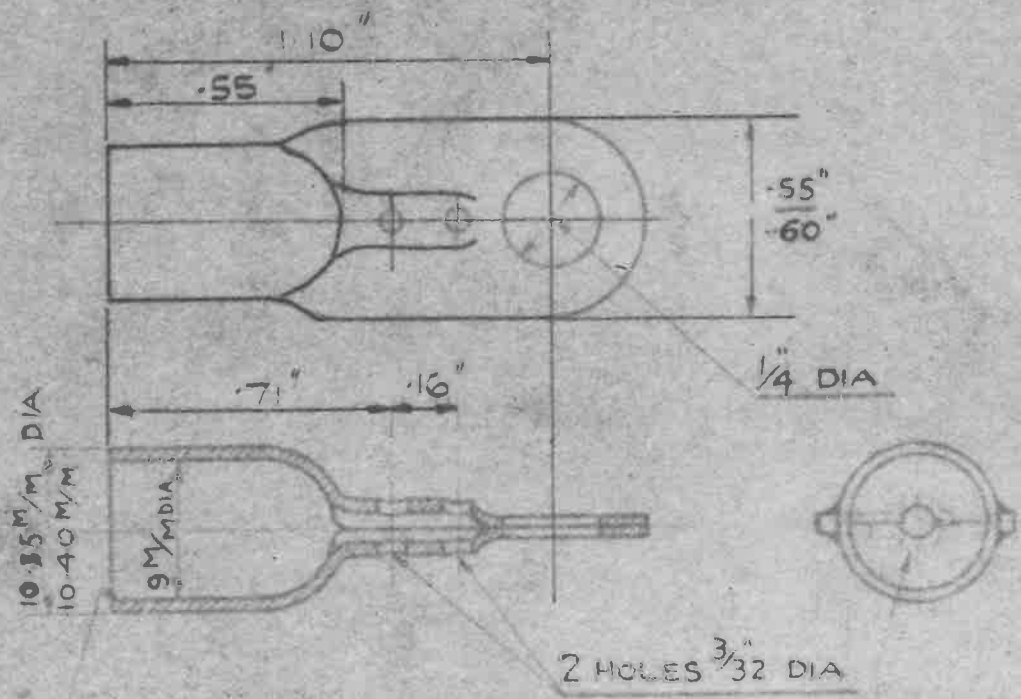
SPECIFICATION

- (1) ALL TERMINALS TO THIS DRAWING ARE TO BE MADE FROM BRASS TUBE TO B.S. SPEC:- T.8 (LATEST ISSUE)
- (2) THE TUBULAR PORTION SHALL BE PARALLEL AND CONCENTRIC AND THERE SHALL BE NO SHARP EDGES AT THE MOUTH OF THE TERMINAL.
- (3) THE DIAMETER OF THE TUBULAR PORTION SHALL BE SUCH THAT THE TERMINAL WILL ENTER THE FULL DEPTH OF A RING GAUGE 10.40 M/M DIAMETER 9 M/M DEEP. AND WILL NOT ENTER A RING GAUGE 10.35 M/M DIAMETER.
- (4) ALL TERMINALS SHALL BE ELECTRO TINNED OR DULL NICKEL PLATED.

RE-

ISSUED BY DRAWING OFFICE DIRECTORATE OF TECHNICAL DEVELOPMENT AIR MINISTRY	TITLE— CABLE TERMINAL LUG FOR SPARKING PLUGS						RETRACED FOR A.P.C. SA. MED. <i>AWKO</i> 24.9.41.	DRAWN <i>Nichols</i>	TRACED
	ISSUE No.	1	2	3			CHECKED	APPROVED	
	ALTERATION	AGS/69	AGS/86	AGS/88					

14 3 25
 A.E.P.O.



REMOVE SHARP EDGES

3/32 HOLE
 PRESSED IN

MATERIAL :- BRASS TUBE TO BS SPEC BSG (LATEST ISSUE)

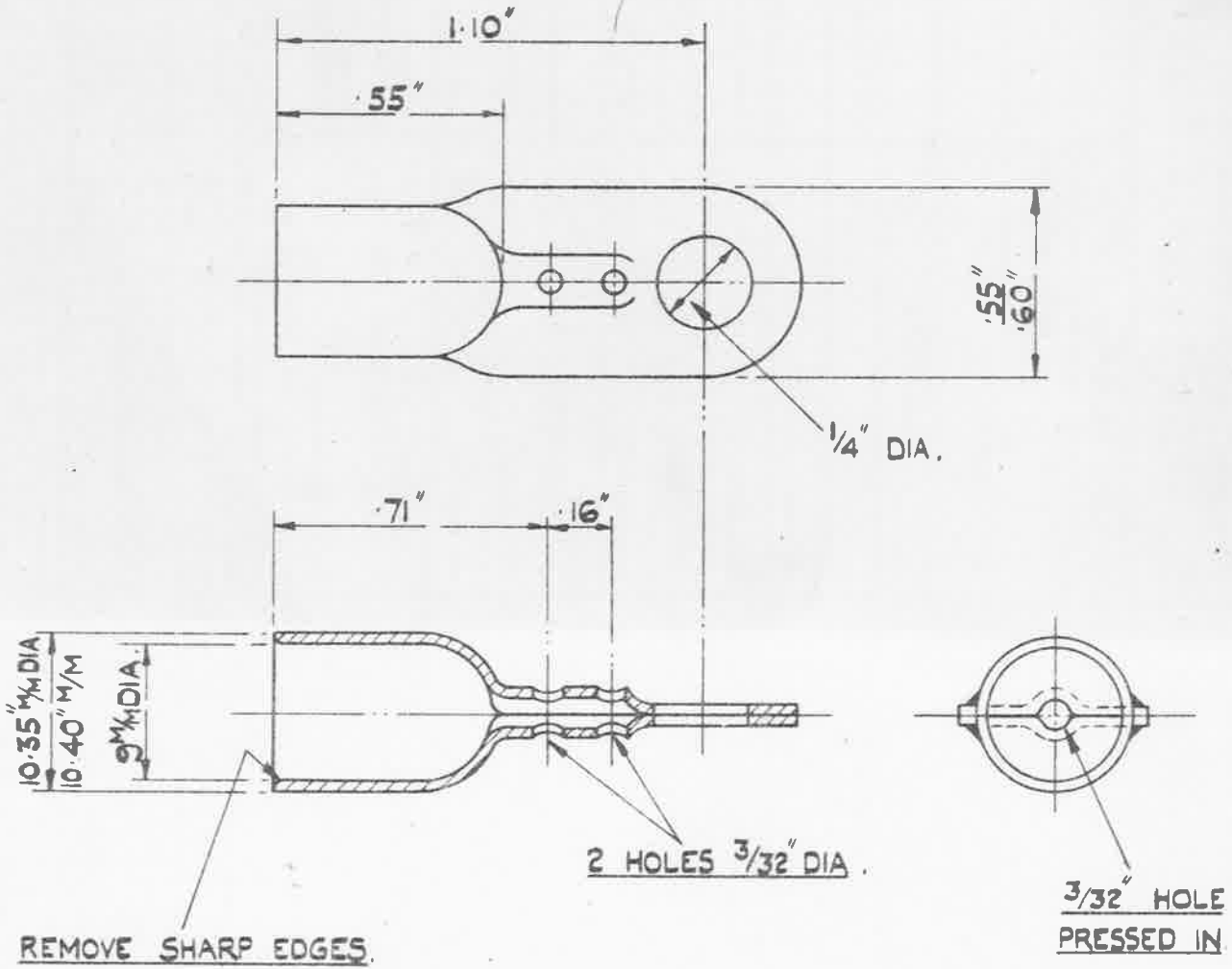
FINISH :- ELECTRO-TINNED ALL OVER THICKNESS NOT
 LESS THAN .0002"

ISSUED BY DRAWING OFFICE DIRECTORATE OF TECHNICAL DEVELOPMENT AIR MINISTRY	TITLE: 9 ^M /M CABLE LUGS.			DRAWN NICHOLS	RETRACT MCS 24
	ISSUE No	5		CHECKED D.P. 2-25	APPROVED GEARTWA
ALTERATION No					

OBSOLESCE - NOT TO BE USED
IN NEW DESIGN WORK. SEE S.O.M. 256

MINISTRY OF AIRCRAFT PRODUCTION **AGS.No. 1516.**

SHEET No.1 | **No.OF SHEETS 1**



MATERIAL:- BRASS TUBE TO B.S. SPEC. 886 (LATEST ISSUE.)

FINISH:- ELECTRO-TINNED ALL OVER. THICKNESS NOT LESS THAN .0002"

ISSUED BY ROYAL AIRCRAFT ESTABLISHMENT.	TITLE:- 9 M/M CABLE LUGS.				RE-DRAWN C.T.Reynolds.	TRACED <i>J.S. Singh</i> 6-4-46
	ISSUE NO	5	6		CHECKED <i>J. Moor</i>	APPROVED <i>J.M.</i>
	ALTER ^N NO	A.S. N ^o	MOD/ACS	AGS/412 973		