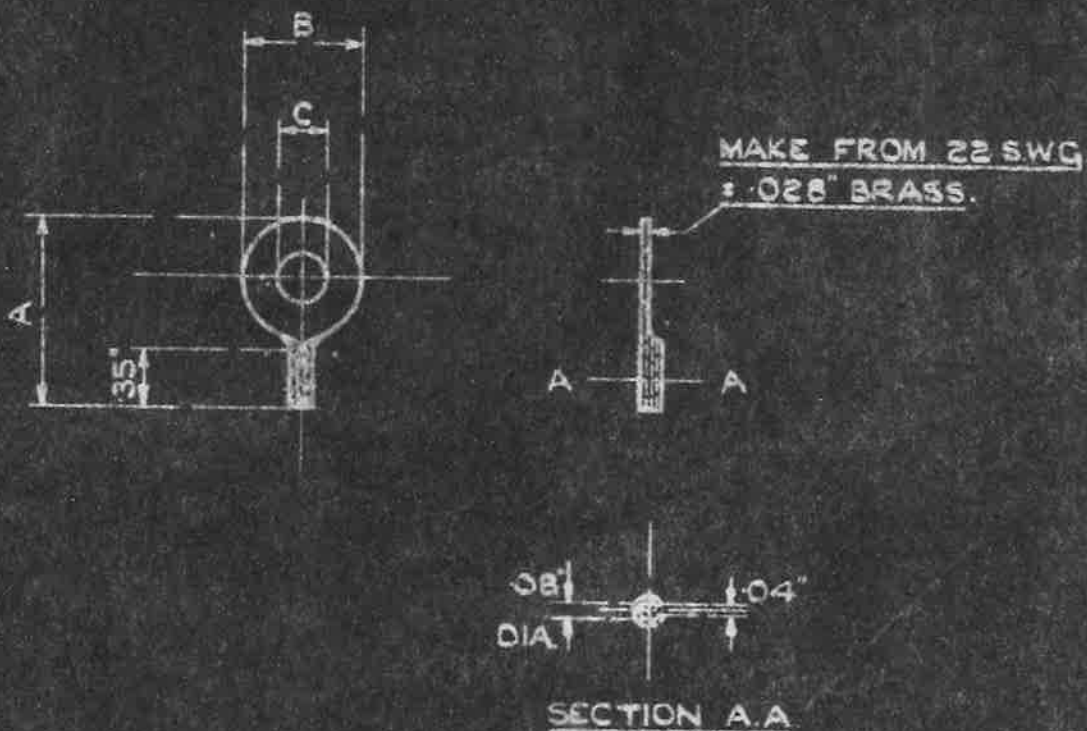


P. W. D.  
 24-6-29  
 PERCENTAGE



MARK.	A	B	C
A	.75"	.35"	.15"
B	.85"	.45"	.19"
C	1.0"	.6"	.25"
D	1.0"	.6"	.32"

SPECIFICATION:-

THE MATERIAL TO BE BRASS IN ACCORDANCE WITH B.E.S.A. SPEC. N° 265 (LATEST ISSUE).

ISSUED BY DRAWING OFFICE DIRECTORATE OF TECHNICAL DEVELOPMENT AIR MINISTRY	TITLE:- RING TERMINAL				DRAWN L.O.B.	RE-TRACED F. HEWETT 17-1-39
	ISSUE No. 2	ALTERATION No. 1	45	10	CHECKED F.G. SMITH RE: CH. FEASIBLE	APPROVED A. PITT. 24-6-29