

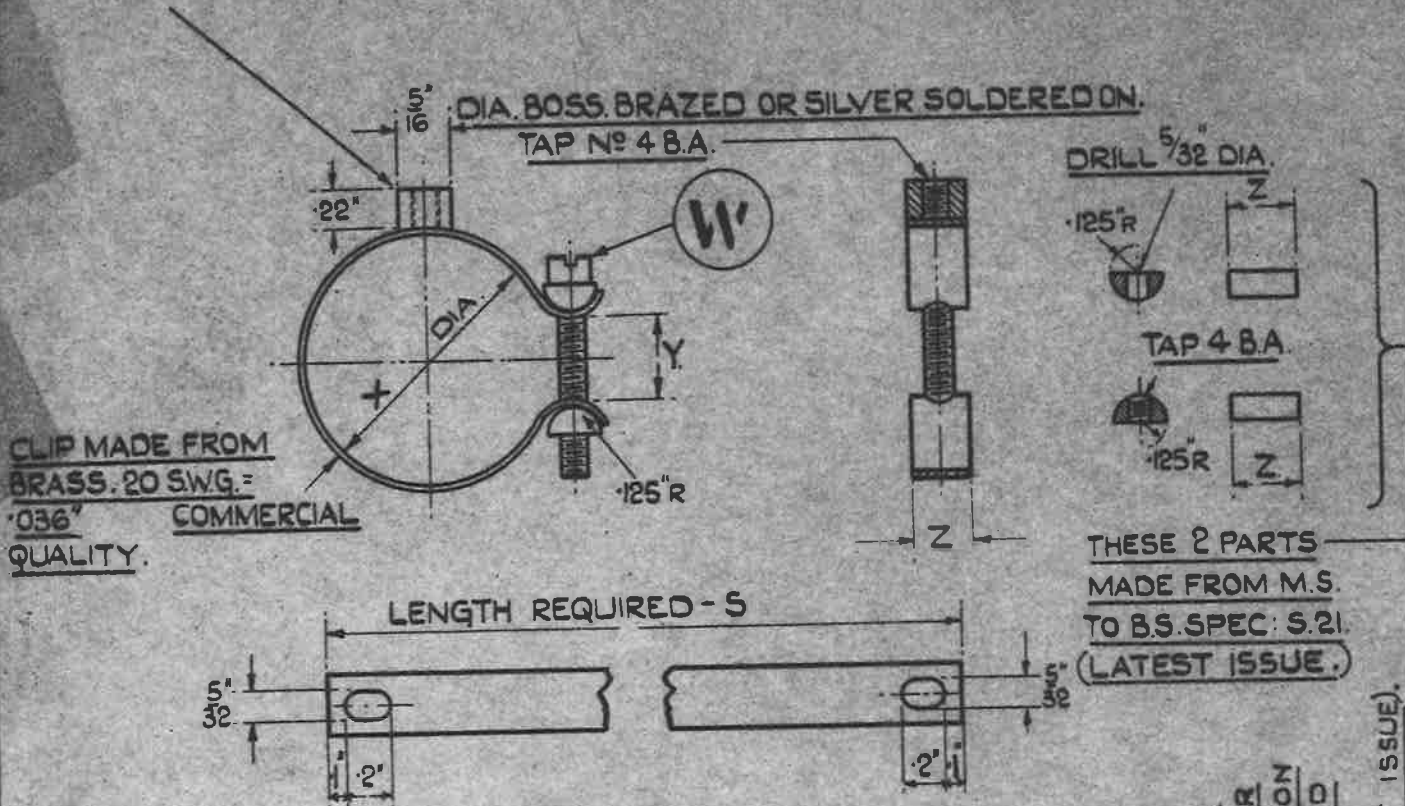
OBSOLESCE

BOSS MADE FROM BRASS
B.S. SPEC: B11. (LATEST ISSUE.)

MINISTRY OF
SUPPLY

AGS. No 1540.

SHEET No 1. No of SHEETS. 1.



SCREW THREADS:- BRITISH ASSOCIATION (B.A) TO B.S. SPEC: N° 93.

| | X. | Y (APPROX) | Z | W. | S. |
|----|-------|---------------|------|-------------|-------|
| A. | .5" | .2" | .31" | AGS. 247-24 | 2.00" |
| B. | .63" | .2" | .31" | AGS. 247-24 | 2.36" |
| C. | .75" | .2" | .31" | AGS. 247-24 | 2.64" |
| D. | .88" | .2" | .31" | AGS. 247-24 | 3.04" |
| E. | 1.0" | .2" | .31" | AGS. 247-24 | 3.40" |
| F. | 1.13" | .3" | .38" | AGS. 247-25 | 3.90" |
| G. | 1.25" | .45" | .38" | AGS. 247-26 | 4.10" |
| H. | 1.50" | .45" | .38" | AGS. 247-26 | 4.85" |
| J. | 1.75" | .45" | .38" | AGS. 247-26 | 5.70" |
| K. | 2.0" | .45" | .38" | AGS. 247-26 | 6.56" |
| L. | 2.25" | .45" | .38" | AGS. 247-26 | 7.20" |
| M. | 2.50" | .45" | .38" | AGS. 247-26 | 8.00" |
| N. | 2.75" | .45" | .38" | AGS. 247-26 | 8.80" |
| P. | | | | | |
| Q. | | | | | |
| R. | | | | | |

FINISH, (BRASS) :- TO BE ELECTRO-TINNED, THICKNESS NOT LESS THAN .0003". NOTE :- PLATING TO BE CARRIED OUT BY EITHER THE ALKALINE SODIUM STANNATE BATH (WITHOUT ADDITION OF GLUE OR OTHER ORGANIC COMPOUNDS) OR BY THE ACID STANNOUS SULPHATE PROCESS.
FINISH, (STEEL) :- TO BE CADMIUM PLATED TO SPEC: D.T.D. 904 (LATEST ISSUE).

ISSUED BY THE
ROYAL
AIRCRAFT

TITLE:- WATER PIPE BONDING CLIP
(WITH BOSS)

ISSUE No: 8 10 11
SM444

DRAWN
C.T. Reynolds

CHECKED
11..

TRACED
G.N.A. 9.7.43

APPROVED
X (11/4)