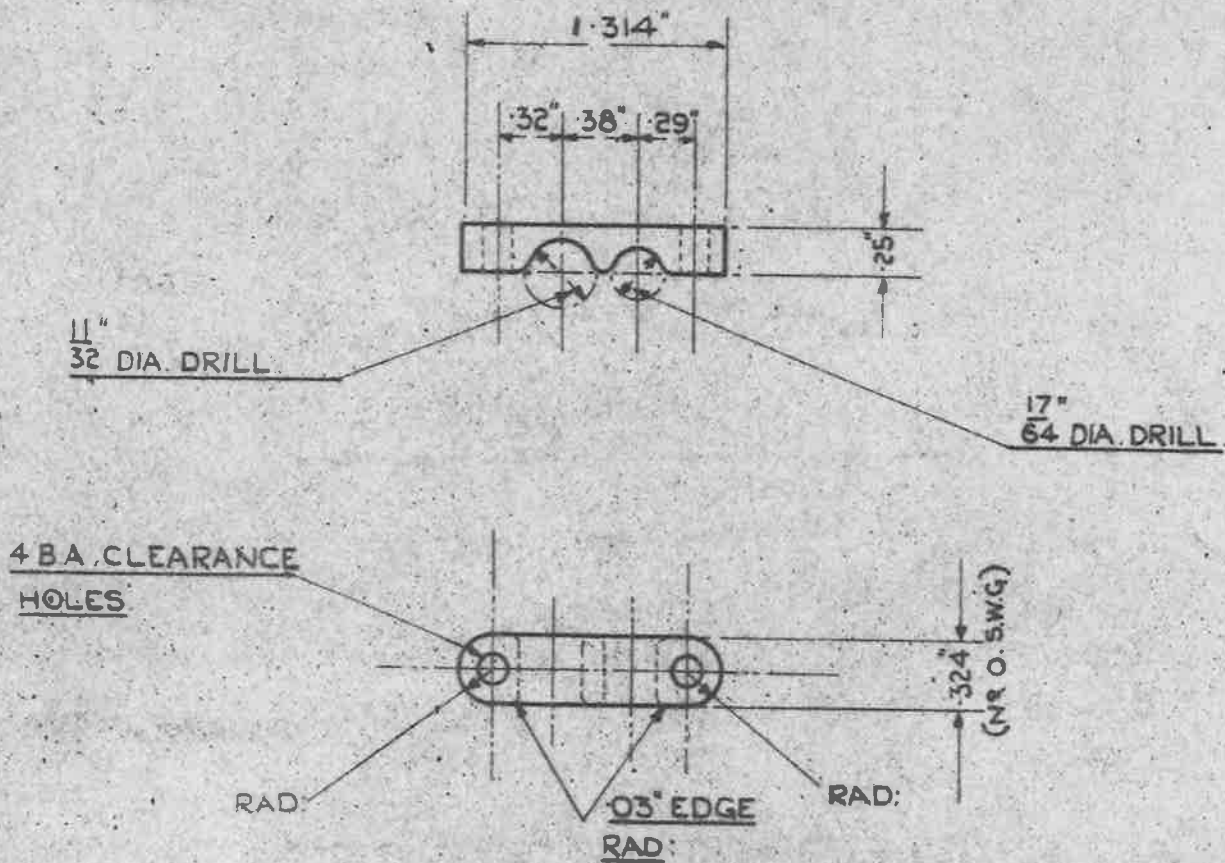


27.6.46
RES: AGS: 161



TOLERANCE ON ALL
DIMENSIONS $\pm .005$ "

MARK H.

FOR 1. H.T. AND 1. L.T. CABLE.

OBSOLESCE

AVAILABLE AS REPLACEMENTS FOR EXISTING DESIGNS ONLY

DIE CASTING.

MATERIAL :- ALUMINUM ALLOY TO B.S. SPEC: L.33. (LATEST ISSUE).

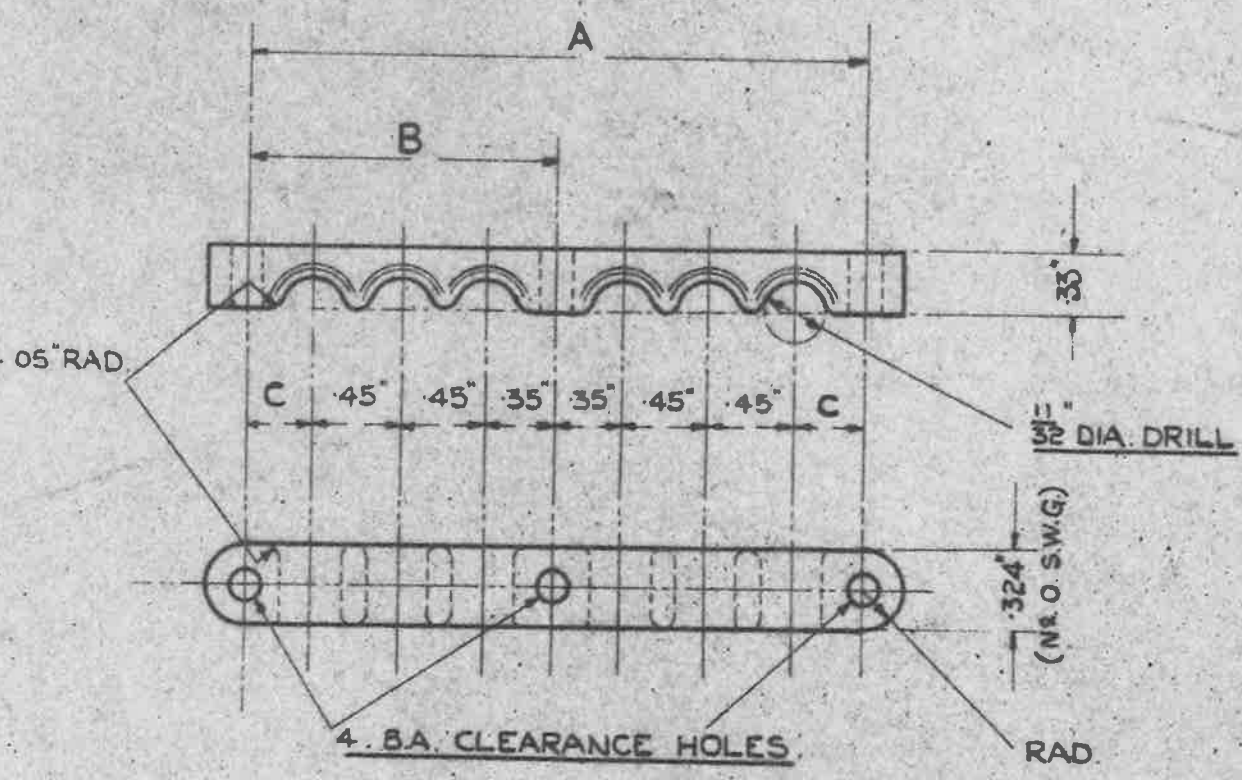
FINISH :- NATURAL

CLASS. 3. CASTING, SEE DRG. NO. A.D. 15528-3. (LATEST ISSUE)

26-7-46 SM 626

ISSUE NO	13	14																		
ALTN. NO	MOD. NO AGS/615	MOD/AGS 931																		
MINISTRY OF SUPPLY APPLICATIONS FOR AGS. SHEETS TO A.T.P. 4. CHESSINGTON, SURREY. GENERAL ENQUIRIES TO A.D./S.A.E., 37 GILES COURT, 1-13 ST GILES HIGH STREET, LONDON, W.C.2.			TITLE:- BONDING CLAMPS FOR METAL BRAIDED CABLES.										RE-DRAWN C.T. Reynolds.		RE-TRACED S.A.W.J. 29-3-46					
													CHECKED <i>[Signature]</i>		APPROVED <i>[Signature]</i>					

27.6.46
 RES-A.79.161.



MARK	NO. OF HOLES.	DIMENSION A	DIMENSION B	DIMENSION C
A	SEE A.G.S	1528 PART B		
B	2	1.15"	-	.35"
C	3	1.60"	-	.35"
D	4	2.05"	-	.35"
E	5	2.75"	1.60"	.35"
F	6	3.20"	1.60"	.35"
G	7	3.65"	2.05"	.35"

OBSOLESCENT
 AVAILABLE AS REPLACEMENTS
 FOR EXISTING DESIGNS ONLY

DIE CASTING.

MATERIAL:- ALUMINUM ALLOY TO B.S. SPEC: L.33. (LATEST ISSUE)

FINISH:- NATURAL.

CLASS 3 CASTING, SEE DRG. No. A.D. 15528-3, (LATEST ISSUE)

26-7-46. SM.626

ISSUE No	8	9								
ALT No	MOD. No	MOD. AGS								
	AGS/615	931								

MINISTRY OF SUPPLY
 APPLICATION FOR A.G.S.
 SHEETS TO A.T.P. 4,
 CHESSINGTON, SURREY
 GENERAL ENQUIRIES TO
 A.D./S.A.E., 5, GILES COURT,
 1-13 ST GILES, HIGH STREET,
 LONDON, W.C. 2.

**TITLE:- BONDING CLAMPS FOR
 METAL BRAIDED CABLES.**

RE-DRAWN BY TRACED
 C.T. Reynolds. S.A.W.J.
 29-3-46.
 CHECKED APPROVED
[Signature] *[Signature]* 15/4/46