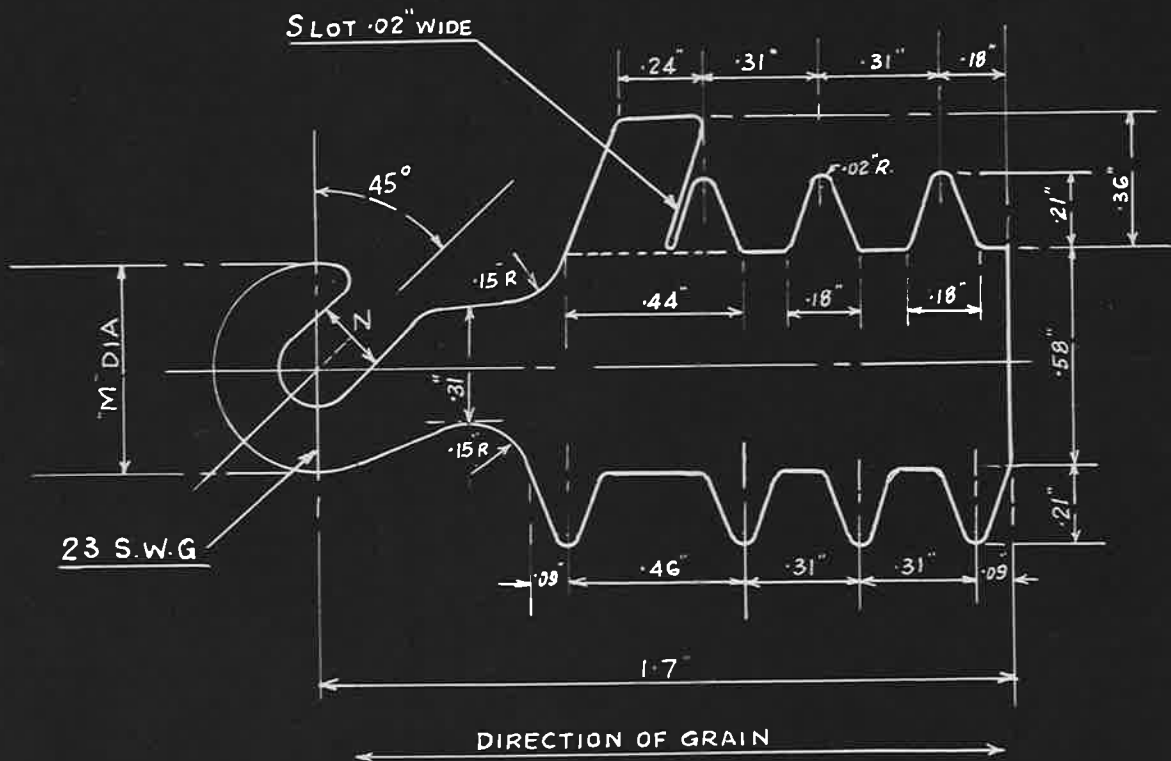
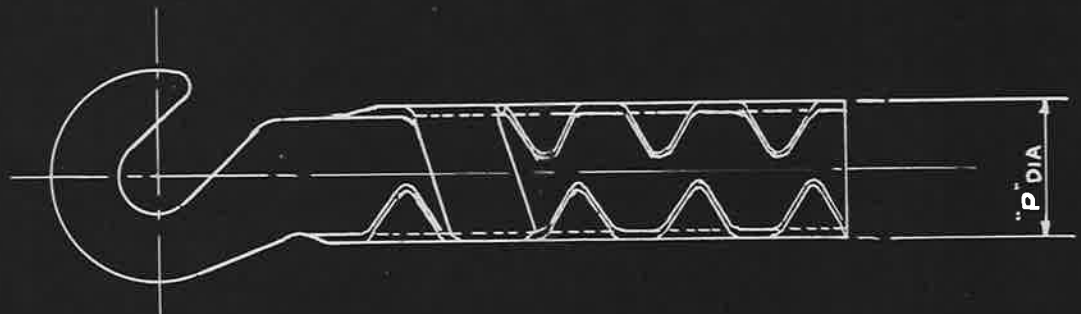
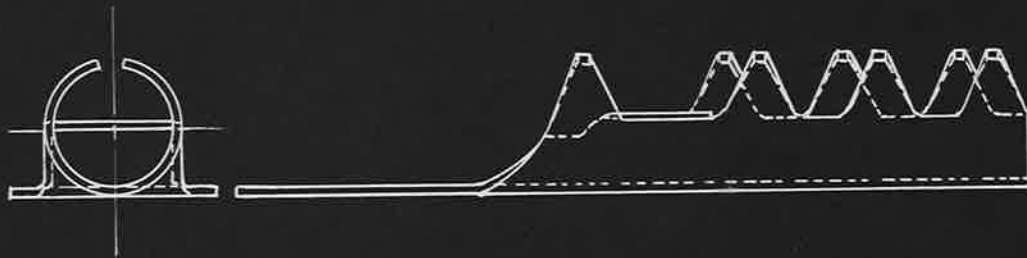


ASSEMBLED TO D.T.D. SPEC: NO 463/RAE WT.184.

SCALE: TWICE FULL SIZE.

|  |  |              |     |             |                                |                     |                                   |
|--|--|--------------|-----|-------------|--------------------------------|---------------------|-----------------------------------|
| ISSUED BY DRAWING<br>OFFICE DIRECTORATE<br>OF<br>TECHNICAL DEVELOPMENT<br>AIR MINISTRY | TITLE—LUGS CONNECTING.<br>FOR CABLE, ASSEMBLY. |              |     |             | RETRACED FOR<br>A.P.C.<br>A.H. | DRAWN<br>J.P. Stark | TRACED<br>D.P. Panchan<br>20-1-23 |
|  | ISSUE No.                                      | 1            | 2   | 3           |                                | CHECKED<br>G.R. son | APPROVED                          |
|  | ALTERATION                                     | AG.S.<br>125 | 126 | AGS.<br>161 |                                |                     |                                   |



| PART N <sup>o</sup> | TERMINAL SIZE | M   | N   | P   |
|---------------------|---------------|-----|-----|-----|
| A.G.S. 1591 A       | 2 BA          | .55 | .2  | .36 |
| A.G.S. 1591 B       | 4 BA          | .45 | .15 | .36 |

MATERIAL:- TO BE BRASS TO B.S. SPEC. B16 (LATEST ISSUE)

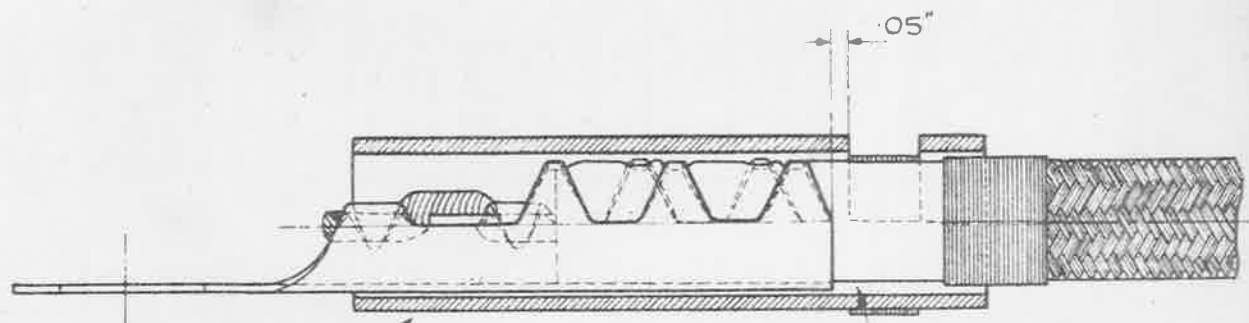
FINISHED TINNED.

FOR ASSEMBLY SEE A.G.S. 1591 SHEET 1 SCALE TWICE FULL SIZE

|  |   |               |   |  |   |                                  |                |
|--|---|---------------|---|--|---|----------------------------------|----------------|
| ISSUED BY DRAWING<br>OFFICE DIRECTORATE<br>OF<br>TECHNICAL DEVELOPMENT<br>AIR MINISTRY | TITLE— LUGS CONNECTING FOR<br>CABLE UNIPLUG |               |   |  | RETRACED FOR<br>A.F.C.<br>A.J.R.(VR) 24-941 | DRAWN<br><i>L.A. [Signature]</i> | TRACED<br>M.R. |
|  | ISSUE No.                                   | 1             | 2 |  |   | CHECKED                          | APPROVED       |
|  | ALTERATION                                  | A.G.S.<br>161 |   |  |   |                                  |                |

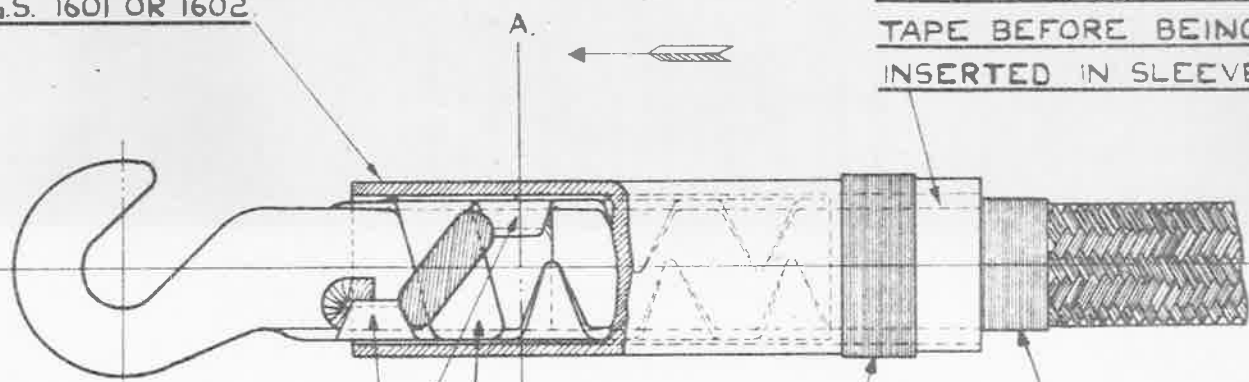
**OBSOLESCE** - NOT TO BE USED  
IN NEW DESIGN WORK. SEE S.D.M. 256

MINISTRY OF SUPPLY **AGS. No. 1591**  
**SHEET No 1** No OF SHEETS. 2



SLEEVE, IDENTIFICATION.  
A.G.S. 1601 OR 1602.

CABLE BOUND WITH ADHESIVE  
TAPE BEFORE BEING  
INSERTED IN SLEEVE.



AFTER WHIPPING,  
COAT WITH CLEAR  
SHELLAC VARNISH.

BRAIDING BOUND  
WITH TWINE AND  
COATED WITH  
CLEAR SHELLAC  
VARNISH.

CONNECTION IS MADE BY  
PINCHING CONDUCTOR UNDER  
THESE TWO TONGUES AS  
SHOWN. CONDUCTOR TO BE  
SOLDERED TO TAB IF POSSIBLE.



SECTION A.A.

IN DIRECTION OF ARROW.

ASSEMBLED TO D.T.D. SPEC. No 463/R.A.E. WT. 184.

SCALE - TWICE FULL SIZE.

ISSUED BY  
ROYAL  
AIRCRAFT  
ESTABLISHMENT

TITLE:- LUGS, CONNECTING, FOR  
CABLE, ASSEMBLY.

DRAWN  
W.S. STARK

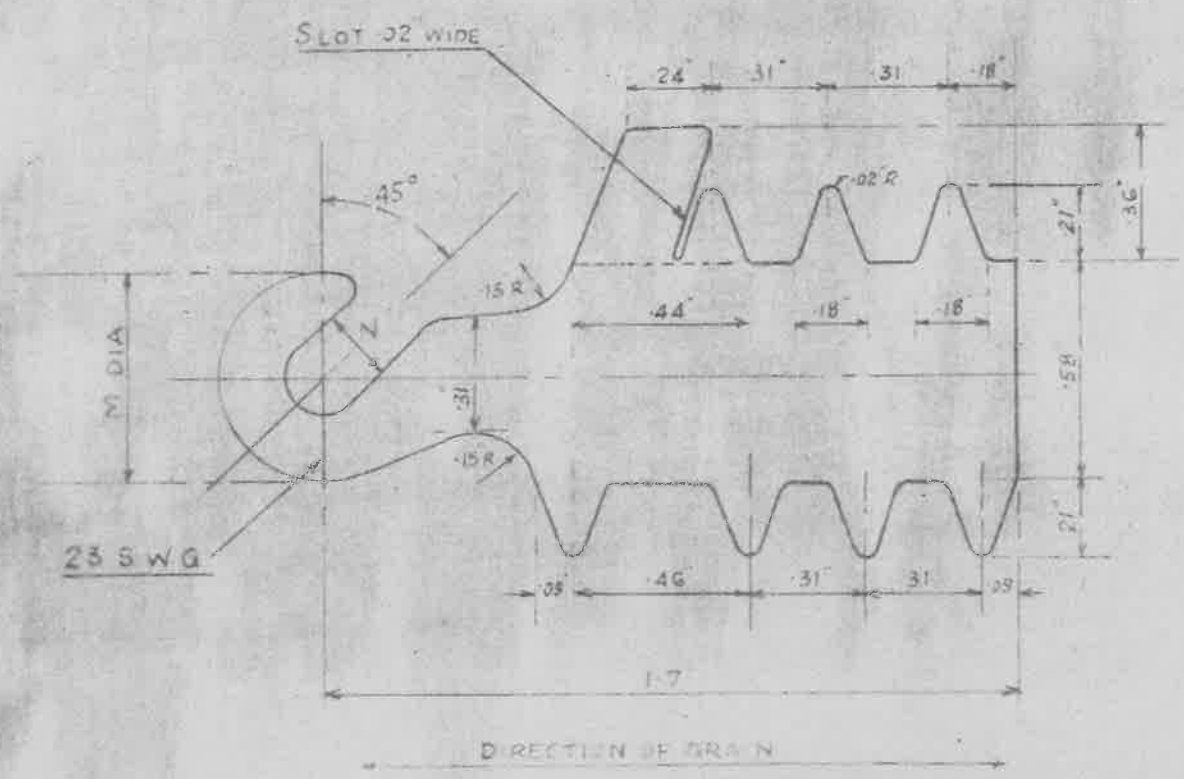
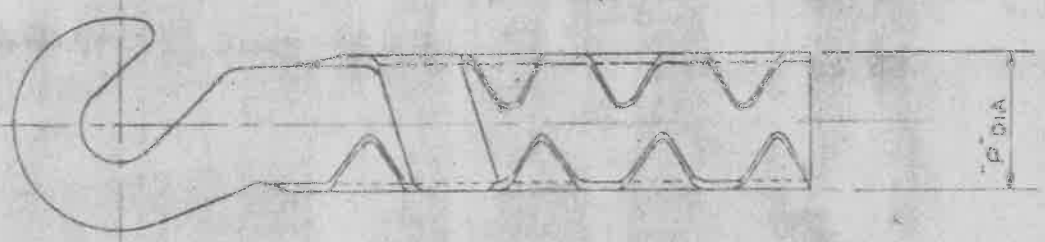
F. GRUBER  
24-12-38

|               |            |           |            |             |
|---------------|------------|-----------|------------|-------------|
| ISSUE No      | 1          | 2         | 3          | 4           |
| ALTERATION No | A.G.S. 125 | A.G.S. 24 | A.G.S. 161 | MOO/ACS 973 |

CHECKED  
G. ANDERSON  
RE: CH. R. BASTABLE

APPROVED  
W.E.S.

SM/T19



| PART N°   | TERMINAL SIZE | M   | N   | P   |
|-----------|---------------|-----|-----|-----|
| AGS 1591A | 2 BA          | .55 | .2  | .36 |
| AGS 1591B | 4 BA          | .45 | .15 | .36 |

MATERIAL - TO BE BRASS TO B.S SPEC B16 (LATEST ISSUE)

FINISH - TO BE ELECTRO-TINNED. THICKNESS NOT LESS THAN .0002"

FOR ASSEMBLY SEE AGS 1591 SHEET 1 SCALE TWICE FULL SIZE

|                             |  |   |          |                               |
|-----------------------------|--|---|----------|-------------------------------|
| DRAWN BY<br>A. J. R. (V.R.) | TITLE - LUGS CONNECTING FOR CABLE UNPLUG |   |          | CHECKED BY<br>L. J. R. (V.R.) |
|                             | SUB NO.                                  |   |          |                               |
| AIR FORCE STAFF             | 1  | 2 | 3        |                               |
|                             | AGS 1591                                 |   | AGS 1591 |                               |

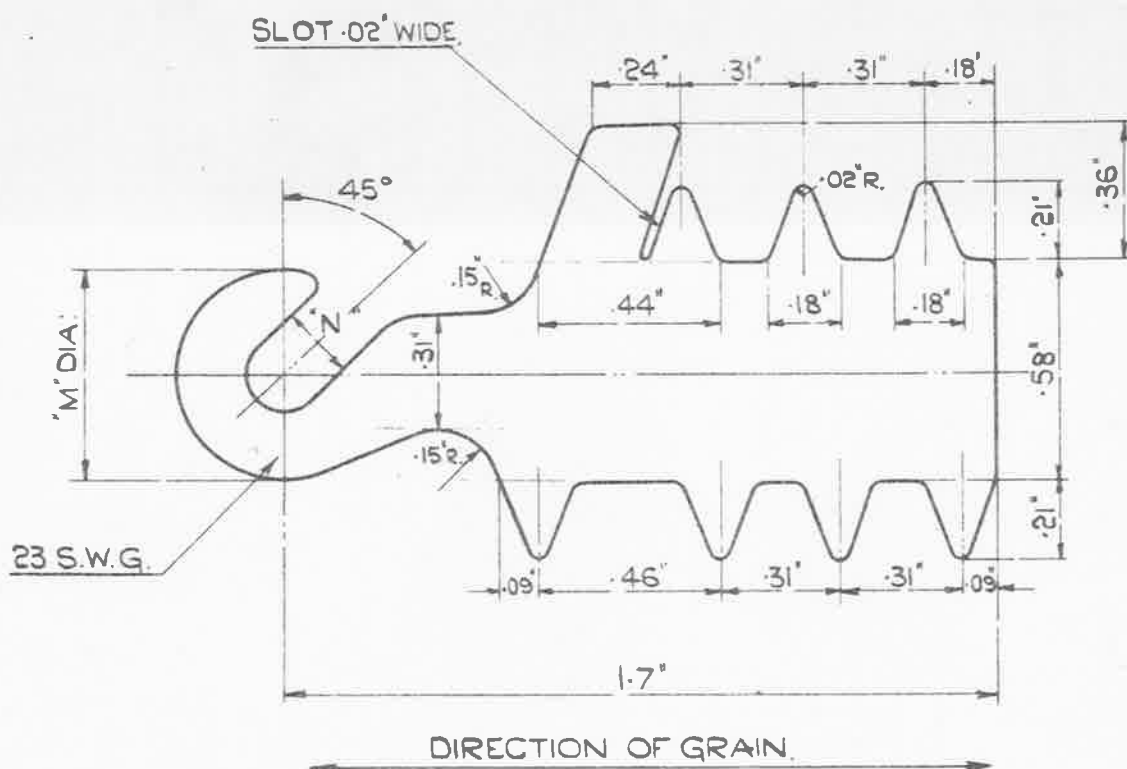
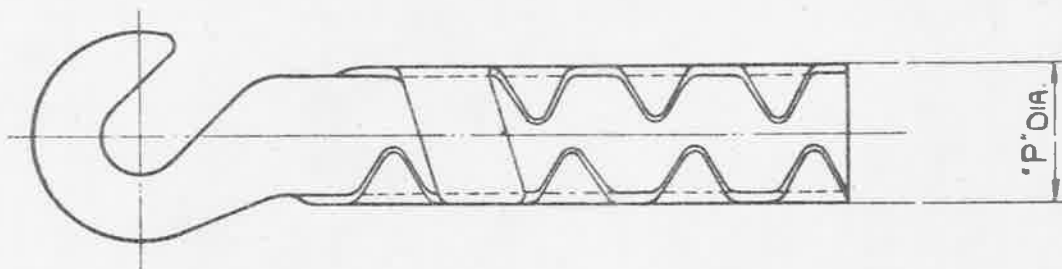
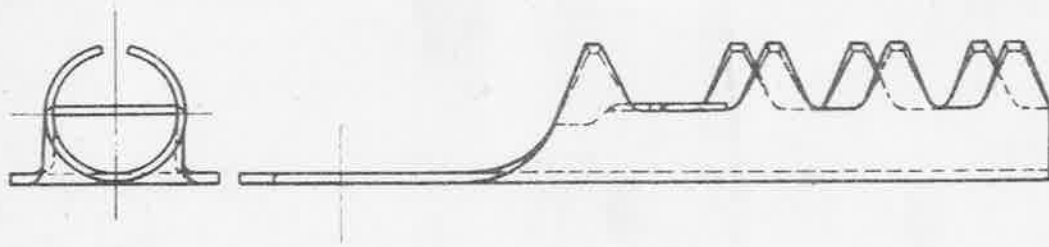
**OBSOLESCE** - NOT TO BE USED  
IN NEW DESIGN WORK. SEE S.D.M. 256

MINISTRY OF  
SUPPLY

AGS.No.1591

SHEET No. 2

No. OF SHEETS 2



| PART N°    | TERMINAL SIZE | "M"  | "N"  | "P"  |
|------------|---------------|------|------|------|
| AGS.1591 A | 2 B.A.        | .55" | .2"  | .36" |
| AGS.1591 B | 4 B.A.        | .45" | .15" | .36" |

MATERIAL: TO BE HARD ROLLED BRASS SHEET TO B.S.SPEC: N° 265,  
(LATEST ISSUE).

FINISH: TO BE ELECTRO-TINNED, THICKNESS NOT LESS THAN .0002"

FOR ASSEMBLY SEE A.G.S.1591 SHEET N°1.

SCALE: TWICE FULL SIZE.

|   |  |         |         |            |                     |                             |                    |
|---|--|---------|---------|------------|---------------------|-----------------------------|--------------------|
| ISSUED BY<br>ROYAL<br>AIRCRAFT<br>ESTABLISHMENT | TITLE: - LUGS, CONNECTING, FOR<br>CABLE, UNIPLUG SMTT9 |         |         |            | DRAWN<br>W.S. STARK | RE-TRACED<br>G.M.H. 10.1.39 |                    |
|   | ISSUE No   | 1       | 2       | 3          | 4                   | CHECKED<br>G. ANDERSON      | APPROVED<br>W.E.B. |
|   | ALTERATION No  | AGS/161 | AGS/110 | AS/AGS/663 | MOD/ACS/973         | RE. CH. C.T. Reynolds       |                    |

2.6.28 28.10.36