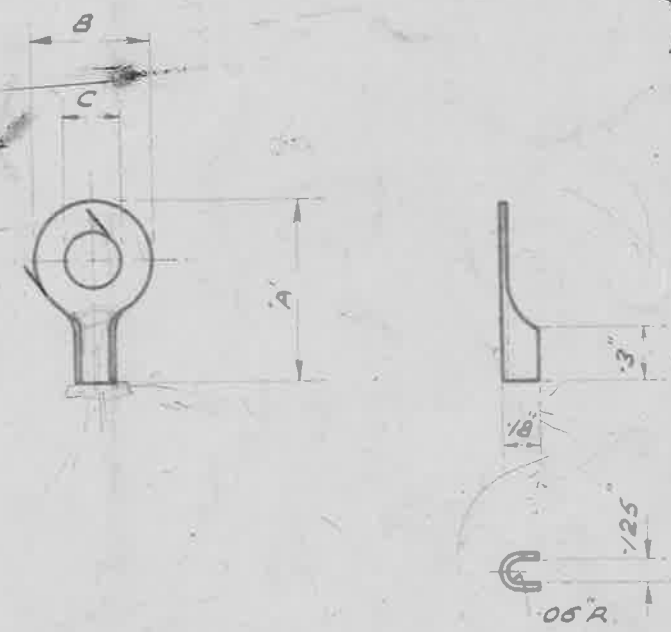


25
125
175



MARK	SIZE	A	B	C
A	4 B.A.	70"	35"	15"
B	2 B.A.	80"	45"	19"
C	1/4"	95"	6"	26"
D	5/16"	95"	6"	32"

MATERIAL :- BRASS 22 SWG. IN ACCORDANCE WITH B.S. SPEC. N^o. 265.
(LATEST ISSUE)

FINISH :- TO BE ELECTRO-TINNED, THICKNESS NOT LESS THAN .0003

NOTE :- PLATING TO BE CARRIED OUT EITHER BY THE ALKALINE SODIUM STANNATE BATH (WITHOUT ADDITION OF GLUE OR OTHER ORGANIC COMPOUNDS) OR BY THE ACID STANNOUS SULPHATE PROCESS.

ISSUED BY DRAWING OFFICE DIRECTORATE OF TECHNICAL DEVELOPMENT AIR MINISTRY	TITLE -	CABLE ENDS EYE TYPE					DRAWN	TRACED J. MATTHEWS 26.5.48
	ISSUE N ^o .	X	2	3	4	5	CHECKED	APPROVED
	ALTER ⁿ N ^o .	142	AGS/83	AGS 526	AGS/320	AGS/605	L. COOK	

OBSOLESCE - NOT TO BE USED
IN NEW DESIGN WORK. SEE S.D.M. 256.

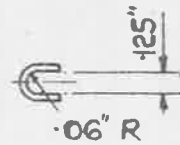
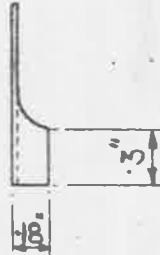
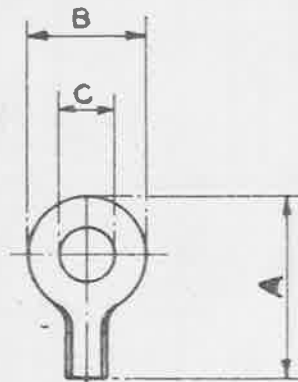
MINISTRY OF
SUPPLY

A.G.S. N° 1600

SHEET N° 1

N° OF SHEETS 1

31.12.28
F. S. WIGLEY



MARK	SIZE	A	B	C
A	4 B.A.	.70"	.35"	.15"
B	2 B.A.	.80"	.45"	.19"
C	$\frac{1}{4}$ "	.95"	.6"	.26"
D	$\frac{5}{16}$ "	.95"	.6"	.32"

MATERIAL :- BRASS. 22 S.W.G. IN ACCORDANCE WITH B.S. SPEC N° 265,
(LATEST ISSUE).

FINISH :- TO BE ELECTRO-TINNED, THICKNESS NOT LESS THAN .0003".

NOTE :- PLATING TO BE CARRIED OUT EITHER BY THE
ALKALINE SODIUM STANNATE BATH, (WITHOUT ADDITION OF
GLUE OR OTHER ORGANIC COMPOUNDS), OR BY THE ACID
STANNOUS SULPHATE PROCESS.

ISSUED BY THE ROYAL AIRCRAFT ESTABLISHMENT	TITLE CABLE ENDS. EYE TYPE.			DRAWN	RE-TRACED
	SM 779			F.L.G	J.S. 28.10.47
	ISSUE N°	5 ²⁸ / ₄₇	6	CHECKED	APPROVED
ALTER ^N N°	AS/AGS/663	MOD/ACS/973	F.L.G. Re-Checked. Traced C.T. Reynolds	G. BAIRSTO 5.3.27	