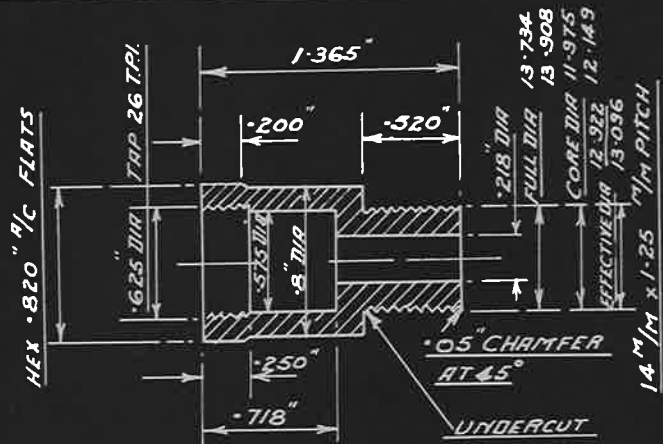
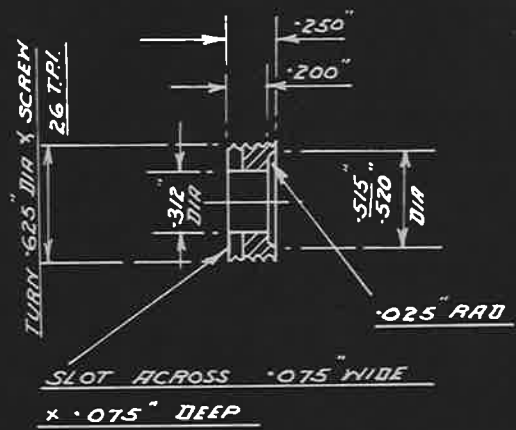


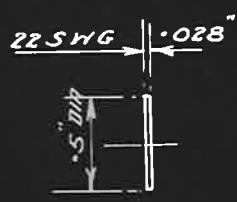
PART NO	A.G.S N°	DESCRIPTION	N° OFF	REMARKS
1	1622/1	BODY	1	
2	1622/2	BUSH	1	
3	1622/3	FLAT DISC	1	SAME AS A.G.S 1622/3
4	1622/4	SPRING	1	SAME AS A.G.S 1622/4



BODY - PART 1
MATERIAL :- BRASS
SPEC B 13
SCALE 1/4

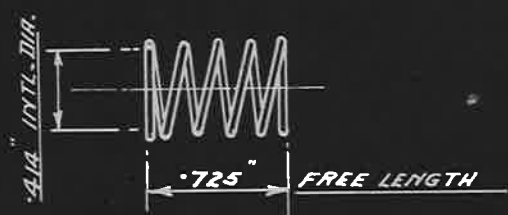


BUSH - PART 2
MATERIAL BRASS
SPEC B 13
SCALE 1/4



FLAT DISC PART 3
MATERIAL BRASS HARD
ROLLED, SPEC : B 5
SCALE 1/4

4 WORKING Coils of 20 S.W.G. (.036")
PIANO WIRE WITH EXTRA COIL AT EACH
END, ENDS OF SPRING GROUND SQUARE,
RATE OF COMPRESSⁿ 7 LBS PER 1"



SPRING PART 4
MATERIAL HARD DRAWN STEEL WIRE
SPEC DTD 5A
SCALE 1/4

ISSUED BY DRAWING OFFICE DIRECTORATE OF TECHNICAL DEVELOPMENT AIR MINISTRY	TITLE— <u>DUMMY SPARKING PLUG</u> 14 M/M.					RETRACED FOR A.P.C. S.A.T. 24-9-41	DRAWN W.E. FOSTER 12-2-36	TRACED W.B.H. 31-1-39
	ISSUE No.	26 X.J.M. 12/30	27 X.J.M. 12/30	28 J.M. 12/31	29 R.M.	30 S.R.M.	CHECKED Q. STEVETT 24/35	APPROVED A PITT 20-2-36
	ALTERATION	AGS/1315	AGS/126	AS AGS/146	AS AGS/154	AS AGS/180	RE CHECKED R.B. BASTABLE	

15.5.36
5038.12/36