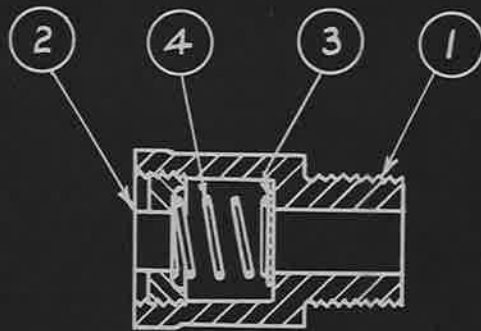
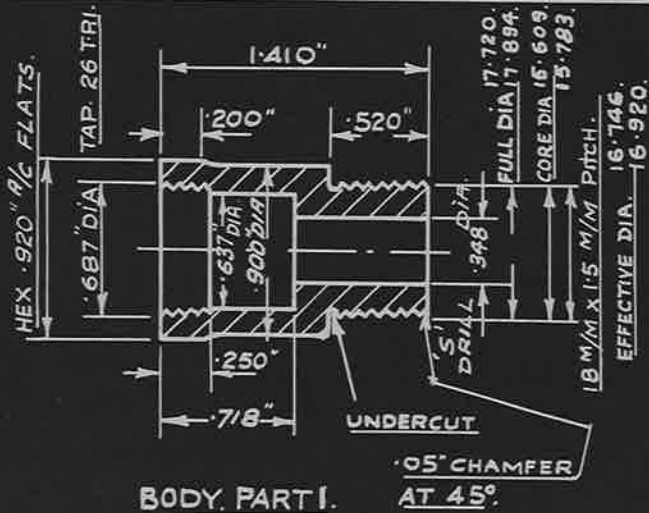


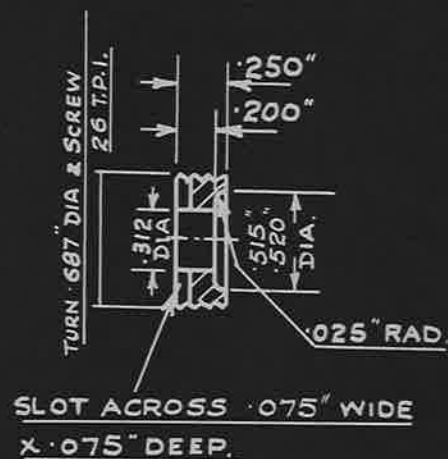
15-5-36.
503812/36.



| PART NO | AGS N° | DESCRIPTION | No OFF | REMARKS |
|---------|--------|-------------|--------|--------------------|
| 1 | 1623/1 | BODY. | 1 | |
| 2 | 1623/2 | BUSH. | 1 | |
| 3 | 1623/3 | FLAT DISC. | 1 | SAME AS AGS 1622/3 |
| 4 | 1623/4 | SPRING. | 1 | SAME AS AGS 1622/4 |



BODY PART 1.
MATERIAL - BRASS
SPEC B 13. SCALE - 1/1.



BUSH PART 2
MATERIAL - BRASS.
SPEC B.13 SCALE 1/1.



FLAT DISC PART 3
MATERIAL - BRASS, HARD
ROLLED SPEC. B 5
SCALE - 1/1.

4 WORKING COILS OF 20 SWG. (.036")
PIANO WIRE WITH EXTRA COIL AT EACH
END. ENDS OF SPRING GROUND
SQUARE. RATE OF COMPRESS N = 7 LB/"



SPRING PART 4
MATERIAL - HARD DRAWN STEEL WIRE
SPEC. D.T.D. 5A SCALE - 1/1

| | | | | | | | | |
|--|---|---------------|---------------|--------------------|--------------------|--|------------------------------------|--------------------------|
| ISSUED BY DRAWING OFFICE DIRECTORATE OF TECHNICAL DEVELOPMENT AIR MINISTRY | TITLE-- DUMMY SPARKING PLUG 18^M/_M | | | | | RETRACED FOR A.P.C. P.J.D. 24-9-41. | DRAWN W.F. FOSTER 12-2-36 | TRACED E.M.W. 10-1-39 |
| | ISSUE No. | X J.M. | X J.M. | X J.M. | X R.M. | 5 R.M. | CHECKED A. STEVENSON 20-2-36 | APPROVED |
| | ALTERATION | A.G.S. 315 | A.G.S. 126 | A.S./A.G.S. 146 | A.S./A.G.S. 154 | A.S./A.G.S. 180 | G.T. REYNOLDS 1/235 | A. Pitt 20-2-36. |