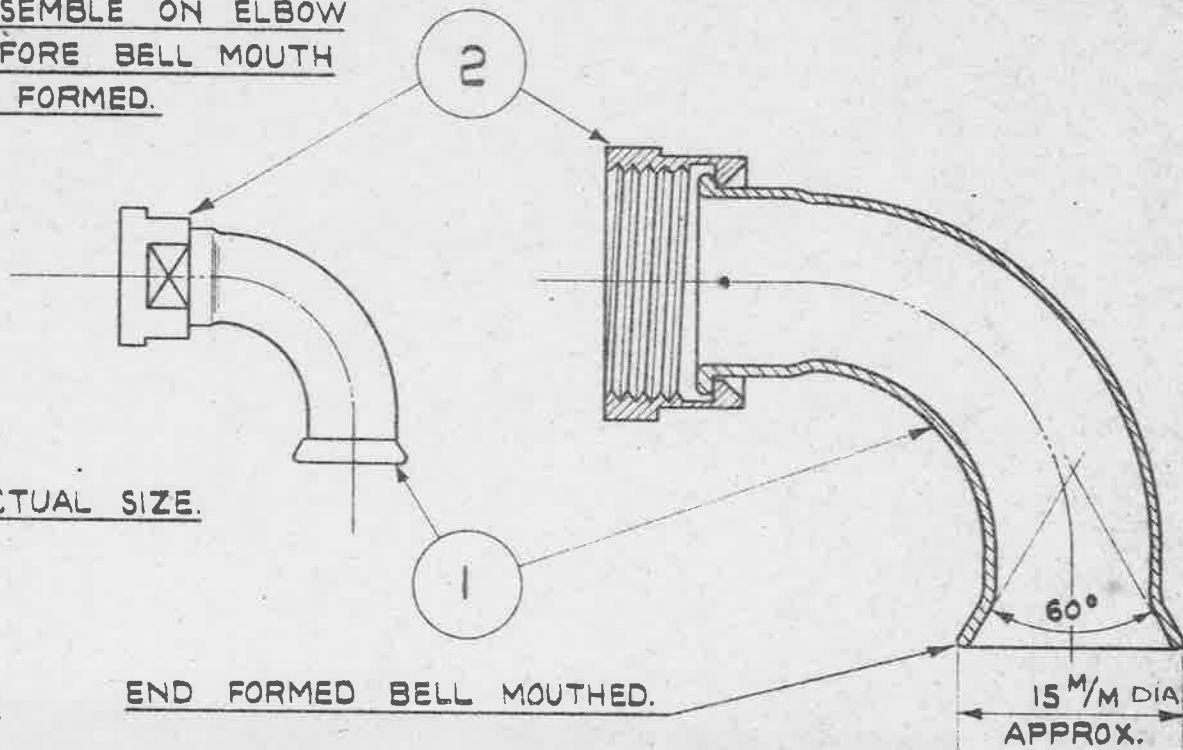


ASSEMBLE ON ELBOW BEFORE BELL MOUTH IS FORMED.

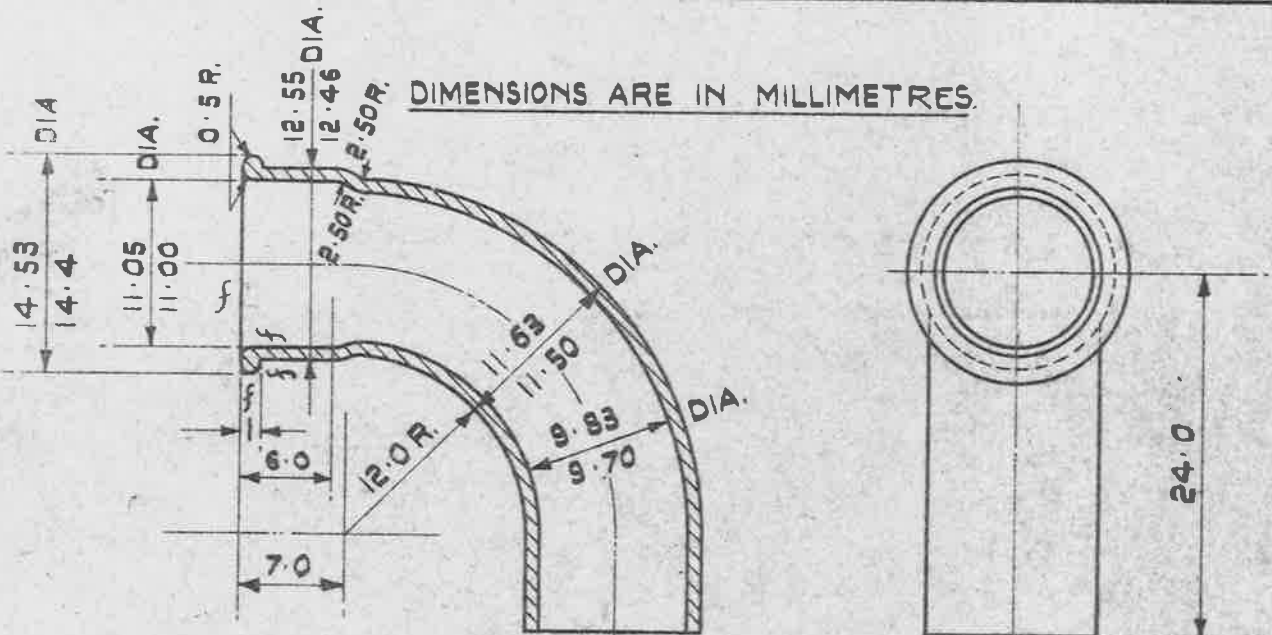
ACTUAL SIZE.



END FORMED BELL MOUTHED.

TITLE:- ELBOW ASSEMBLY.

SCALE:- TWICE FULL SIZE.



MATERIAL:- BRASS B.S. SPEC: 886 (LATEST ISSUE.) MACHINE AT f.  
FINISH:- ELECTRO-TINNED, THICKNESS NOT LESS THAN .0002."

TITLE:- ELBOW.

SCALE:- TWICE FULL SIZE.

ONE COMPLETE ASSEMBLY CONSISTS OF THE FOLLOWING PARTS:-

PART NO	DRAWING NO	DESCRIPTION.	NO OFF	REMARKS.
1.	AGS. 1625 - 1.	ELBOW.	1.	
2.	AGS. 1517.	H.T. CABLE UNION NUT.	1.	

ISSUED BY THE ROYAL AIRCRAFT ESTABLISHMENT

TITLE:- SLEEVES, BONDING, METAL BRAIDED CABLE, H.T. OUTER, CURVED WITH UNION NUT.

DRAWN M.W. SHIPPEY

TRACED A.N. FOWLER 26-1-44

ISSUE NO 4  
ALTER NO AGS/319 MOD AGS/542 AS NO AGS/400 AS/AGS 853

CHECKED J.M. Moor

APPROVED. J.M. Moor 27-1-44

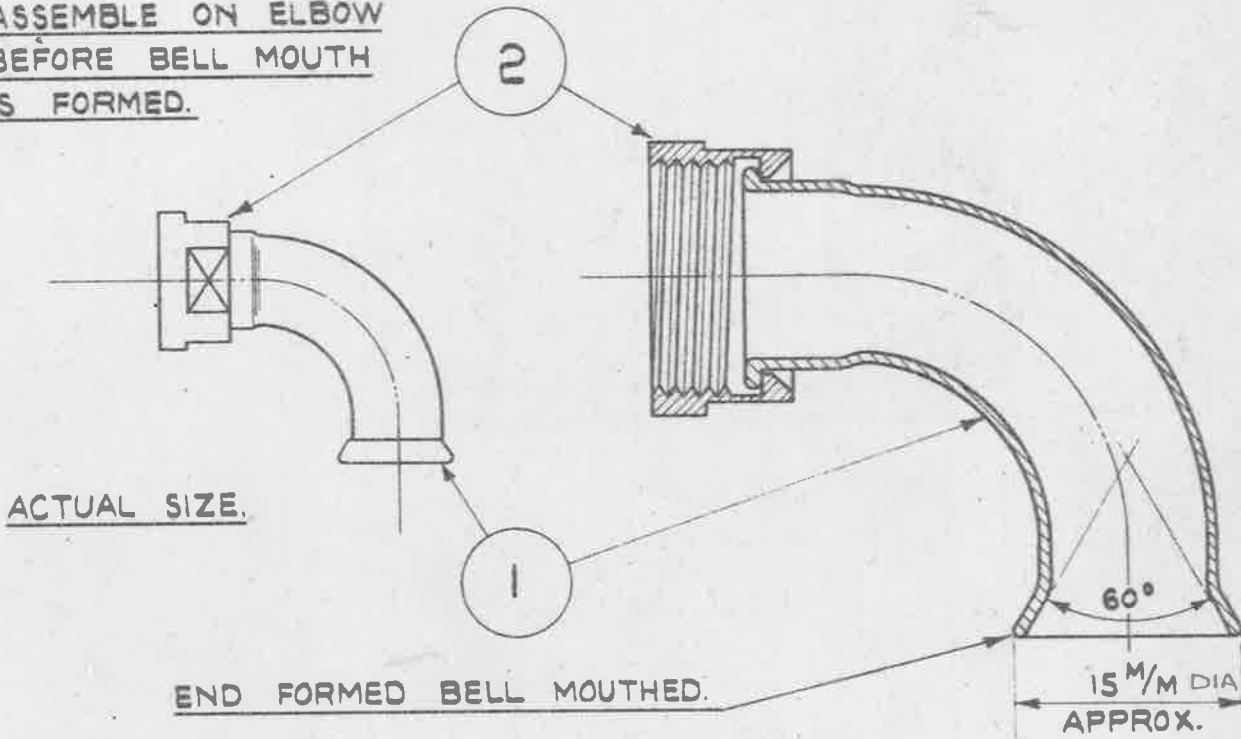
**OBSOLESCE** - NOT TO BE USED  
IN NEW DESIGN WORK. SEE S.D.M. 267

MINISTRY OF  
SUPPLY

AGS. No 1625

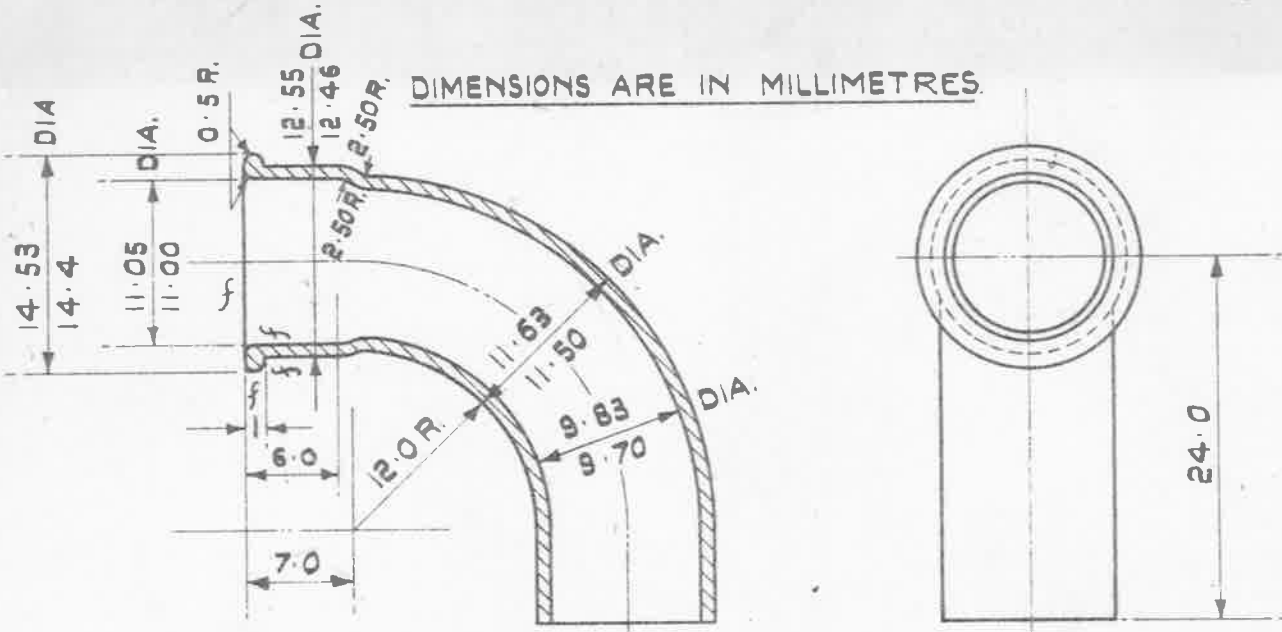
SHEET No 1 | No OF SHEETS 1

ASSEMBLE ON ELBOW  
BEFORE BELL MOUTH  
IS FORMED.



TITLE:- ELBOW ASSEMBLY.

SCALE:- TWICE FULL SIZE.



1

MATERIAL:- BRASS B.S. SPEC. 886 (LATEST ISSUE) MACHINE AT f.  
FINISH:- ELECTRO-TINNED, THICKNESS NOT LESS THAN .0002"

TITLE:- ELBOW.

SCALE:- TWICE FULL SIZE.

ONE COMPLETE ASSEMBLY CONSISTS OF THE FOLLOWING PARTS:-

PART No	DRAWING No	DESCRIPTION.	No OFF	REMARKS.
1.	A.G.S. 1625 - 1.	ELBOW.	1.	
2.	A.G.S. 1517.	H.T. CABLE UNION NUT.	1.	

ISSUED BY THE  
ROYAL AIRCRAFT  
ESTABLISHMENT

TITLE:- SLEEVES, BONDING, METAL BRAIDED  
CABLE, H.T. OUTER, CURVED WITH UNION NUT.

DRAWN  
M.W. SHIPPEY

TRACED  
A.N. FOWLER  
26-1-44

ISSUE No 1 2 3 4 5  
ALTER No AGS/3/9 MOD AGS/AS. No 542 AGS/4/11 AS/AGS MOD/AGS 853 974

CHECKED  
J. Moore

APPROVED  
J. Moore  
27-1-44

SM458