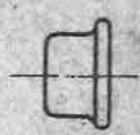
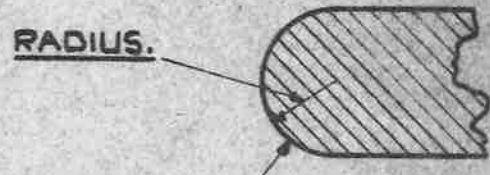


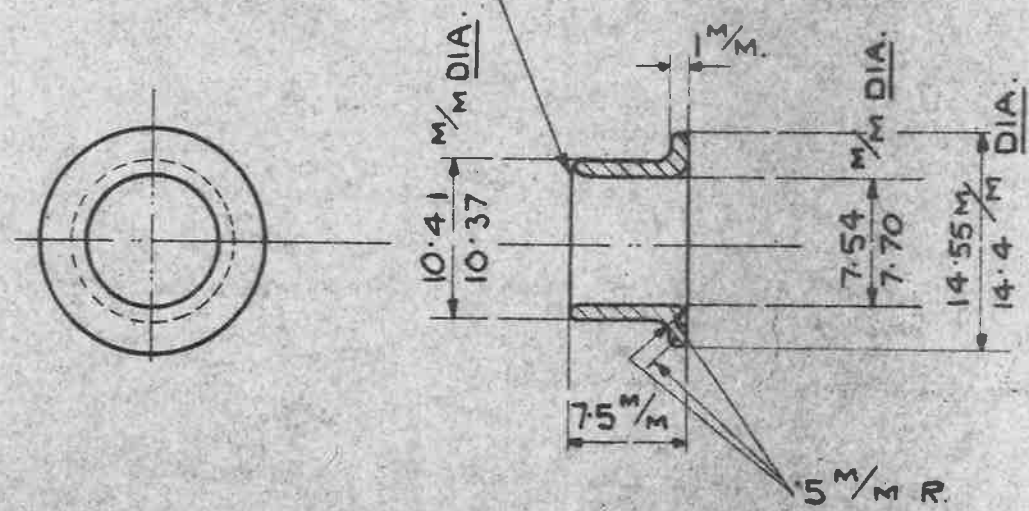
688689/37



FULL SIZE VIEW OF SLEEVE.



NOTE:- IMPORTANT. END MUST BE ROUNDED OFF AS SHOWN IN ENLARGED VIEW.



SCALE  $\frac{2}{1}$

MATERIAL :- BRASS TUBE . COMMERCIAL QUALITY.

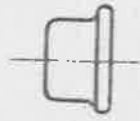
FINISH:- TO BE ELECTRO-TINNED, THICKNESS NOT LESS THAN .0002 "

IMPORTANT. ALL SHARP EDGES TO BE WELL ROUNDED OFF.

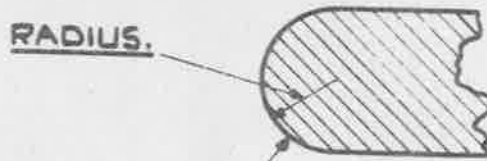
ISSUED BY ROYAL AIRCRAFT ESTABLISHMENT	TITLE :- SLEEVES, BONDING, METAL BRAIDED CABLE, H.T. 8.5 M/M. CABLE, INNER.					DRAWN FROM A.G.S. 1616 J. MILLS.	RE-TRACED Y. MAWER. 11-1-39	
	ISSUE No	1	2	3	4	5	CHECKED G.W.B. AS-CHECKED C.T. Reynolds (17.1.39)	APPROVED G. BAIRSTO. 9-9-37
	ALTERATION No	347	A.S. No AGS/220	Mod. No AGS/402	AS/AGS/AB/AGS 663	AGS/AB/AGS 853		

**OBSOLESCE** - NOT TO BE USED  
IN NEW DESIGN WORK. SEE S.D.M. 267

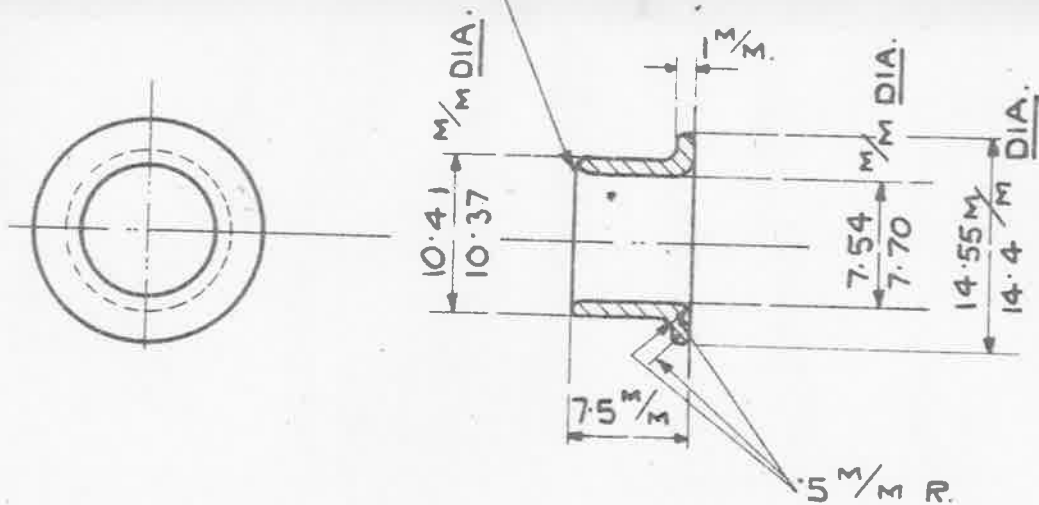
MINISTRY OF SUPPLY **AGS No. 1630**  
**SHEET No. 1** No of SHEETS 1



FULL SIZE VIEW OF SLEEVE.



NOTE:- IMPORTANT. END MUST BE  
ROUNDED OFF AS SHOWN  
IN ENLARGED VIEW.



SCALE  $\frac{2}{1}$

MATERIAL:- BRASS TUBE. COMMERCIAL QUALITY.

FINISH:- TO BE ELECTRO-TINNED, THICKNESS NOT LESS THAN .0002".

IMPORTANT. ALL SHARP EDGES TO BE WELL ROUNDED OFF.

ISSUED BY  
ROYAL  
AIRCRAFT  
ESTABLISHMENT

TITLE:- SLEEVES, BONDING, METAL BRAIDED  
CABLE, H.T. 8.5 M/M. CABLE, INNER.

ISSUE No 6

ALTERATION No MOD/AGS 974

ISSUE 5 SM458 SM780

DRAWN  
FROM AGS. 1616  
J. MILLS.

CHECKED  
G.W.B.  
RE-CHECKED  
C.T. Reynolds (27.1.37)

RE-TRACED  
Y. MAWER.  
11-1-39

APPROVED  
G. BAIRSTO.  
9-9-37.