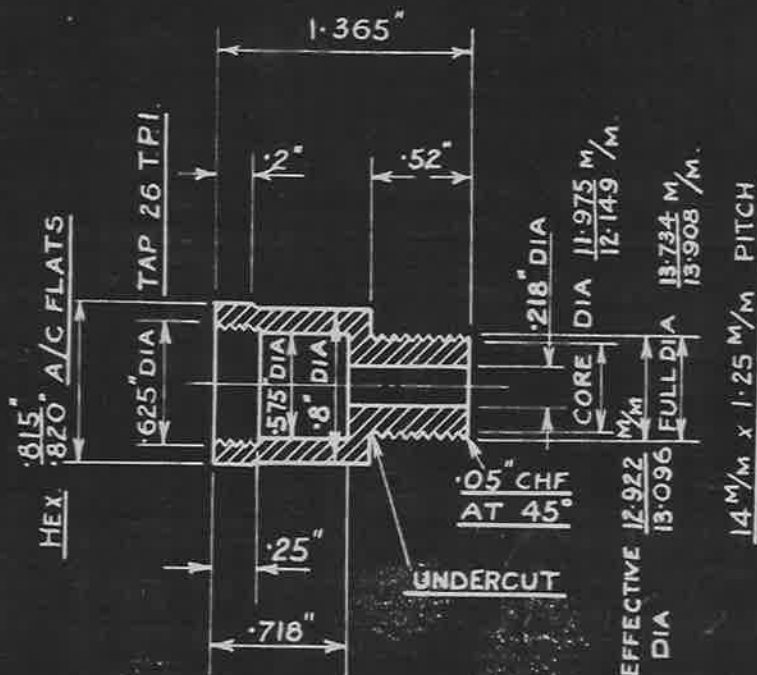


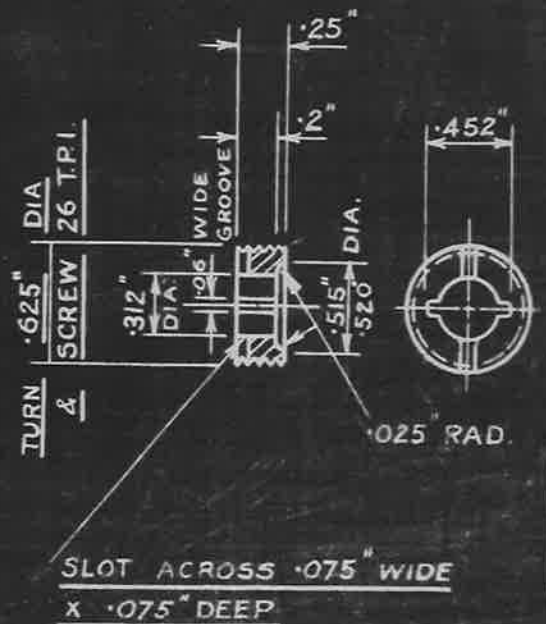
PART N°	A.G.S. N°	DESCRIPTION	N° OFF	REMARKS
1	1632/1	BODY	1	
2	1632/2	BUSH	1	
3	1632/3	VALVE BASE	1	SAME AS AGS 1633/3
4	1632/4	VALVE SPRING (OUTLET)	1	" " " 1633/4
5	1632/5	VALVE CAP	1	" " " 1633/5
6	1632/6	VALVE INLET	1	" " " 1633/6
7	1632/7	VALVE SPRING (INLET)	1	" " " 1633/7

SCALE: - $\frac{2}{1}$



BODY - PART 1
MATERIAL: - BRASS
SPEC. N° B.13

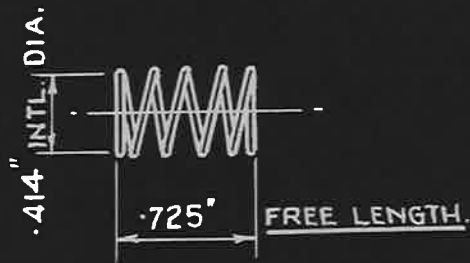
SCALE - $\frac{1}{1}$



BUSH - PART 2
MATERIAL: - BRASS
SPEC N° B.13

SCALE - $\frac{1}{1}$

ISSUED BY DRAWING OFFICE DIRECTORATE OF TECHNICAL DEVELOPMENT AIR MINISTRY	TITLE - <u>DUMMY SPARKING PLUG, 14 M/M WITH TWO WAY VALVE</u>				RETRACED FOR A.P.C. AS S. K.K.	DRAWN M. CHAMBERLAIN 22-3-39	TRACED P. W. 9-5-39
	ISSUE No. 1/35	2			CHECKED R. MANSON 28-7-39	APPROVED A. PITT	
	ALTERATION	AGS/359	AGS/197			PE. CH. R. BASTAIN	

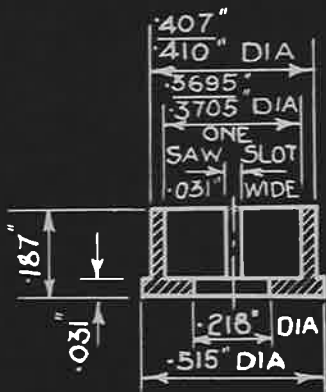


4 WORKING COILS OF .024" DIA. WIRE WITH EXTRA
 COIL AT EACH END. ENDS OF SPRING GROUND SQUARE.
 RATE OF COMPRESSION=1.47 lb PER IN. APPROX.

SPRING. PART N° 4

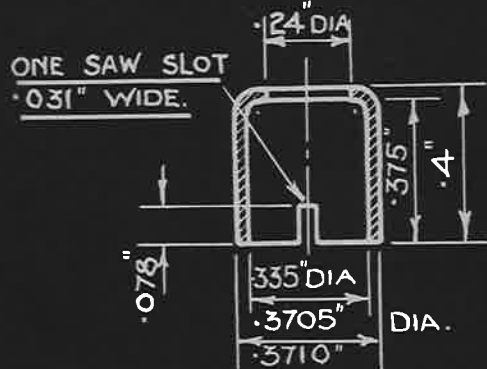
MATERIAL:- BEST QUALITY SPRING STEEL.

SCALE:- $\frac{1}{1}$



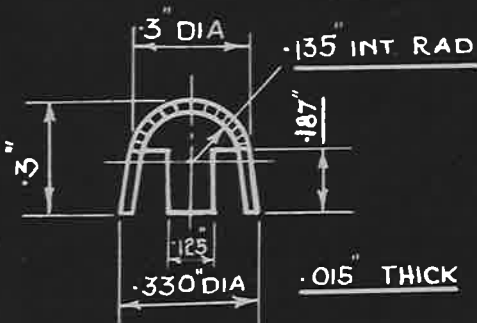
VALVE BASE - PART N° 3.
MATERIAL:- BRASS BAR
SPEC. N° B.13

SCALE:- $\frac{2}{1}$



VALVE CAP:-
MATERIAL:-
SPEC. N°

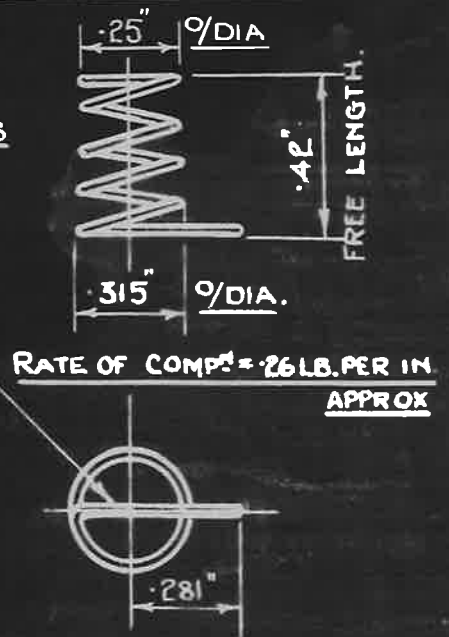
PART N° 5
BRASS.
B.13 OR BS.265 SCALE:- $\frac{2}{1}$



VALVE INLET - PART N° 6
MATERIAL:- BRASS
SPEC. N° BS.265

SCALE:- $\frac{2}{1}$

4 WORKING COILS
 .011" DIA WIRE
 LAST COIL TO
 BE BENT AS
 SHOWN



VALVE SPRING (INLET) PART N° 7
MATERIAL:- BEST QUALITY SPRING STEEL.

SCALE:- $\frac{2}{1}$

ISSUED BY DRAWING OFFICE DIRECTORATE OF TECHNICAL DEVELOPMENT AIR MINISTRY	TITLE - <u>DUMMY SPARKING PLUG</u> <u>14 M/M. WITH 2 WAY VALVE.</u>				RETRACED FOR APC <u>W.W.J.</u> 30-9-41.	DRAWN <u>M. CHAMBERLAIN</u> 21-3-39.	TRACED <u>P.W.</u> 2-5-39.
	ISSUE No.	1.	2.	3.		CHECKED <u>R.T. MANSON.</u> 20-5-39.	APPROVED <u>A. PITT.</u> 29-3-39.
	ALTERATION	MOD #65/369	RS #65/197	MOD #65/392			