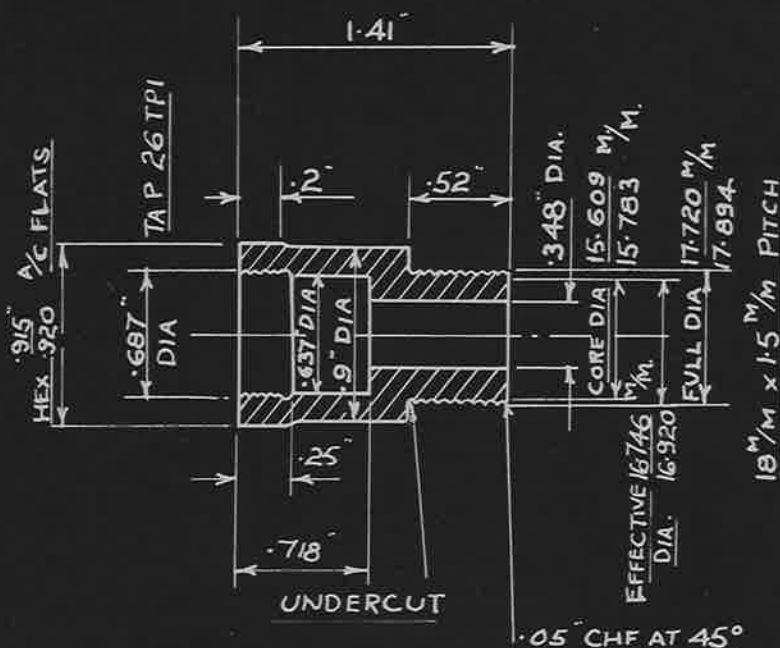


ON ASSEMBLY, VALVE SPRING WIRE GRIPPED BETWEEN CAP & BASE & BENT UP AGAINST SIDE OF CAP

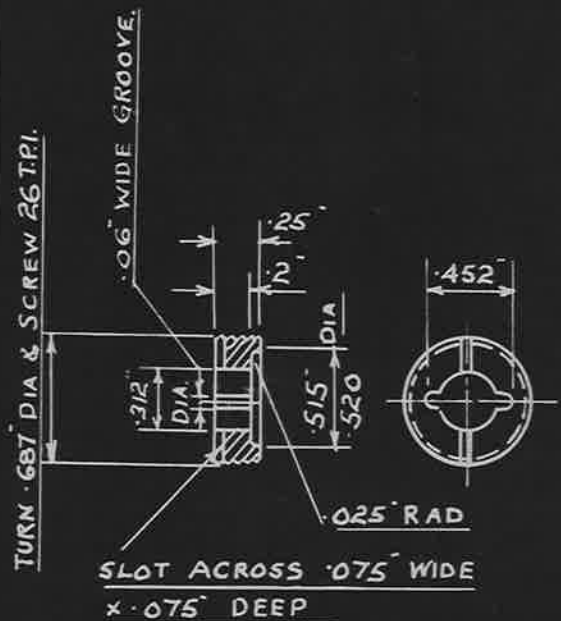
PART N°	AGS. N°	DESCRIPTION	N° OFF	REMARKS
1	1633/1	BODY	1	
2	1633/2	BUSH	1	
3	1633/3	VALVE BASE	1	SAME AS AGS 1632/3
4	1633/4	VALVE SPRING (OUTLET)	1	- 1632/4
5	1633/5	VALVE CAP	1	- 1632/5
6	1633/6	VALVE INLET	1	- 1632/6
7	1633/7	VALVE SPRING (INLET)	1	- 1632/7

SCALE: $\frac{2}{1}$



BODY - PART N° 1
 MATERIAL - BRASS
 SPEC - B 13

SCALE: $\frac{1}{1}$

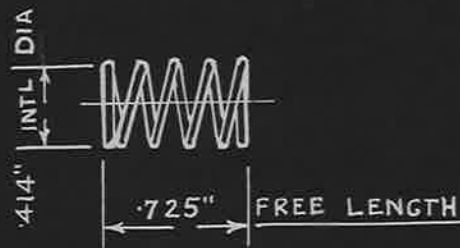


BUSH - PART N° 2
 MATERIAL - BRASS
 SPEC - B 13

SCALE: $\frac{1}{1}$

ISSUED BY DRAWING OFFICE DIRECTORATE OF TECHNICAL DEVELOPMENT AIR MINISTRY	TITLE - DUMMY SPARKING PLUG 18 M/M WITH 2 WAY VALVE				RETRACED FOR APC A.M.H. 24.9.41	DRAWN M. CHAMBERLAIN 20-3-39	TRACED W. B.H. 9-5-39
	ISSUE No.	+ Jm	2			CHECKED R. T. MANSON 20-3-39	APPROVED A. PITT 29-3-39
	ALTERATION	Mod	AGS/369	AS	AGS 197	RE. CH. R. B. BARTABLE	

20-4-39



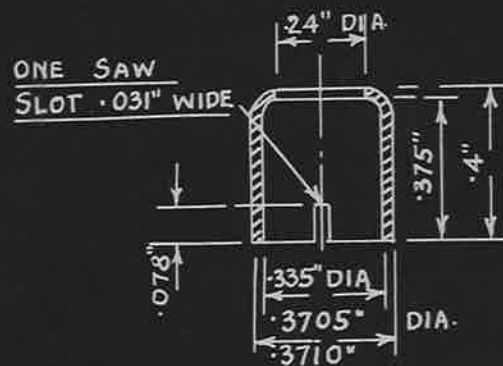
4 WORKING COILS OF .02+ inch DIA WIRE WITH EXTRA COIL AT EACH END. ENDS OF SPRING GROUND SQUARE
 RATE OF COMPRESSION = 1.4716 PER IN. APPROX:

SPRING PART No 4
 MATERIAL :- BEST QUALITY SPRING STEEL

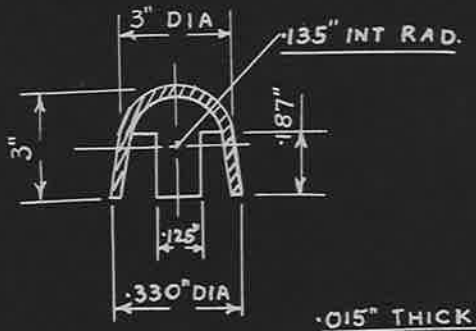
SCALE: $\frac{1}{1}$



VALVE BASE PART No 3
 MATERIAL :- BRASS BAR
 SPEC. No. B.13 SCALE: $\frac{2}{1}$

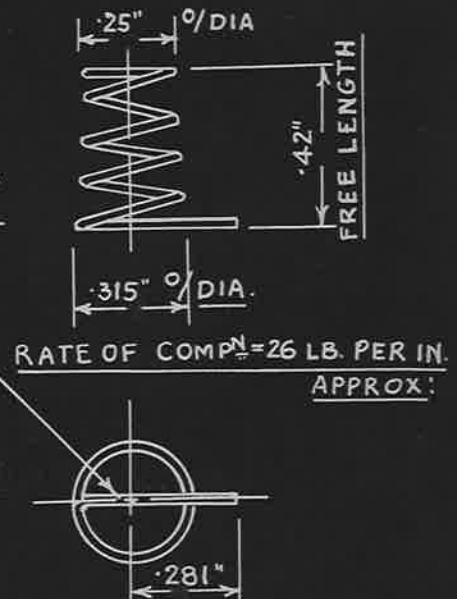


VALVE CAP PART No 5
 MATERIAL :- BRASS
 SPEC. No. B. 13 OR BS 265 SCALE: $\frac{2}{1}$



VALVE INLET PART No 6
 MATERIAL BRASS
 SPEC. No. B.S.265 SCALE: $\frac{2}{1}$

4 WORKING COILS
 .011" DIA WIRE
 LAST COIL TO BE BENT AS SHOWN



VALVE SPRING (INLET) PART No 7
 MATERIAL :- BEST QUALITY SPRING STEEL
 SCALE: $\frac{2}{1}$

ISSUED BY DRAWING OFFICE DIRECTORATE OF TECHNICAL DEVELOPMENT AIR MINISTRY	TITLE— DUMMY SPARKING PLUG, 18 ^M /M WITH 2 WAY VALVE			RETRACED FOR A.P.C. H.W.B. (V.R.) 24.9.41	DRAWN M. CHAMBERLAIN 21.3.39	TRACED P.W. 11/5/39
	ISSUE No. 3/38	2	3		CHECKED R. MANSON 28.3.39	APPROVED A. PITT 29.3.39
	ALTERATION M00 AGS/369	AS AGS/169	M00 AGS/392		RECHECKED K.B. BASTAPLE 25.5.39	