

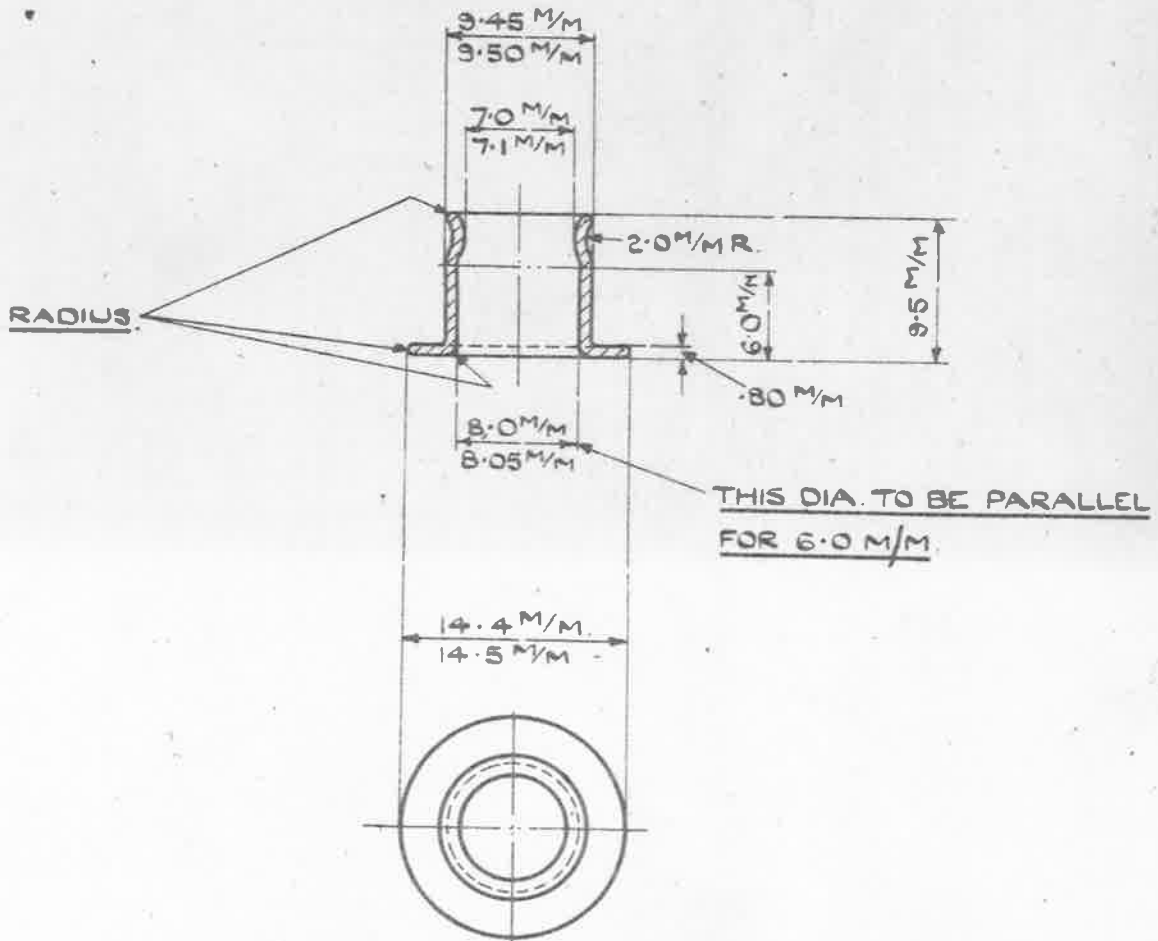
**OBSOLESCE** - NOT TO BE USED  
IN NEW DESIGN WORK. SEE S.O.M. 267

MINISTRY OF  
SUPPLY

AGS. No 1638

SHEET No 1 | No OF SHEETS 1

B. 105374/40



ALL SHARP EDGES TO BE ROUNDED OFF

MATERIAL :- BRASS.

FINISH :- ELECTRO-TINNED THICKNESS NOT LESS THAN .0002.

SCALE :-  $\frac{1}{2}$

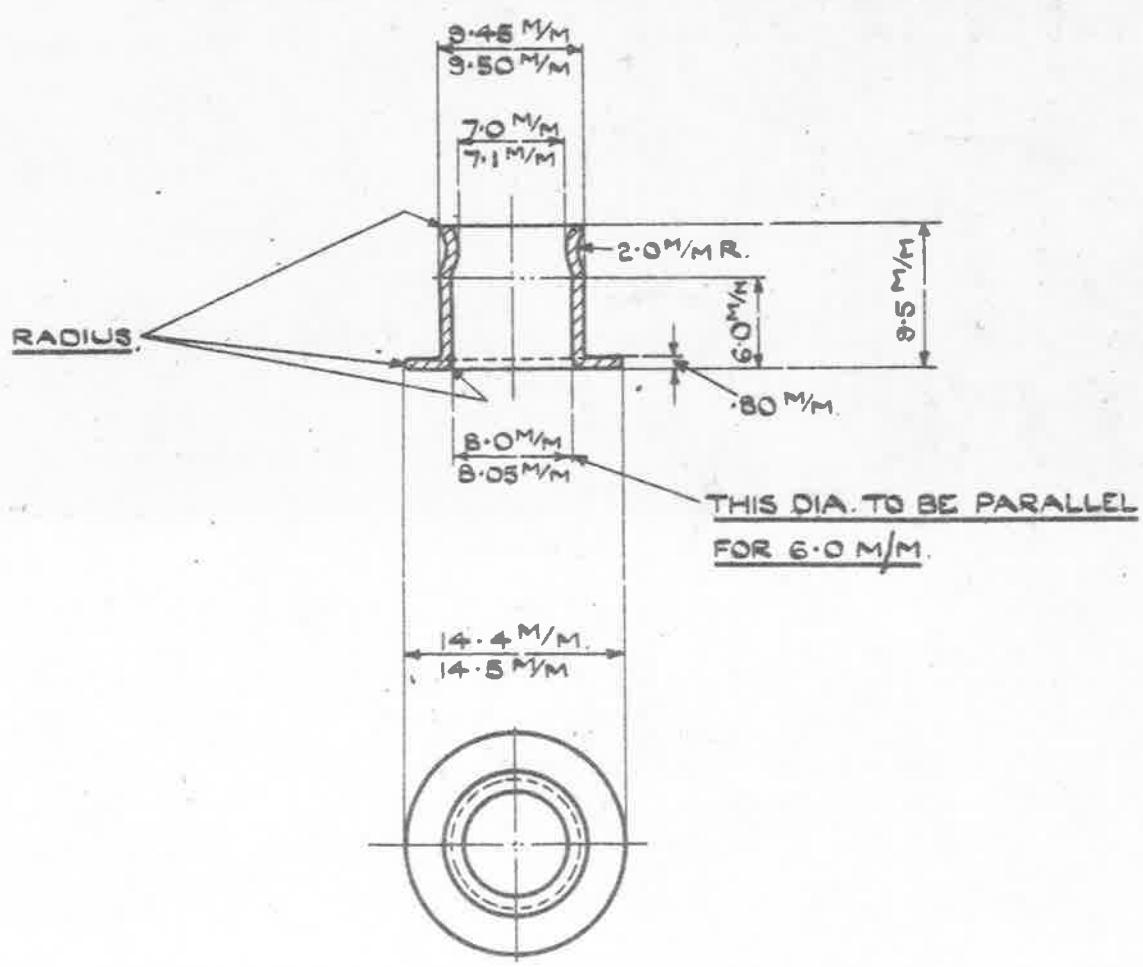
ISSUED BY ROYAL AIRCRAFT ESTABLISHMENT	TITLE :- SLEEVES, BONDING, METAL BRAIDED CABLE, L.T. OUTER, TYPE B.				DRAWN R B BASTABLE FROM F 217057-5	TRACED H.W. 5-4-40
	ISSUE No	6			CHECKED <i>Lowes</i>	APPROVE <i>GS 8-5</i>
	ALTER No	MOD AGS 974				

ISSUE 5 SM 458 SM 180

OBSOLESCE - NO FURTHER MANUFACTURE  
EXISTING STOCKS MAY BE USED.

MINISTRY OF SUPPLY **AGS. No 1638**  
**SHEET No 1** | **No OF SHEETS 1**

B. 105374/40



ALL SHARP EDGES TO BE ROUNDED OFF

MATERIAL:- BRASS.

FINISH:- ELECTRO-TINNED, THICKNESS NOT LESS THAN .0002.

SCALE:- 1/2

ISSUED BY ROYAL AIRCRAFT ESTABLISHMENT	TITLE:- SLEEVES, BONDING, METAL BRAIDED CABLE, L.T. OUTER, TYPE B.				DRAWN. R B BASTABLE FROM E 17057-5	TRACED H.W. 6-4-40
	ISSUE NO	8	7	7	CHECKED <i>[Signature]</i>	APPROVED. <i>[Signature]</i> 8.5.40
	ALTERS NO	MOD/AGS 874	MOD/AGS 953	SM 873		