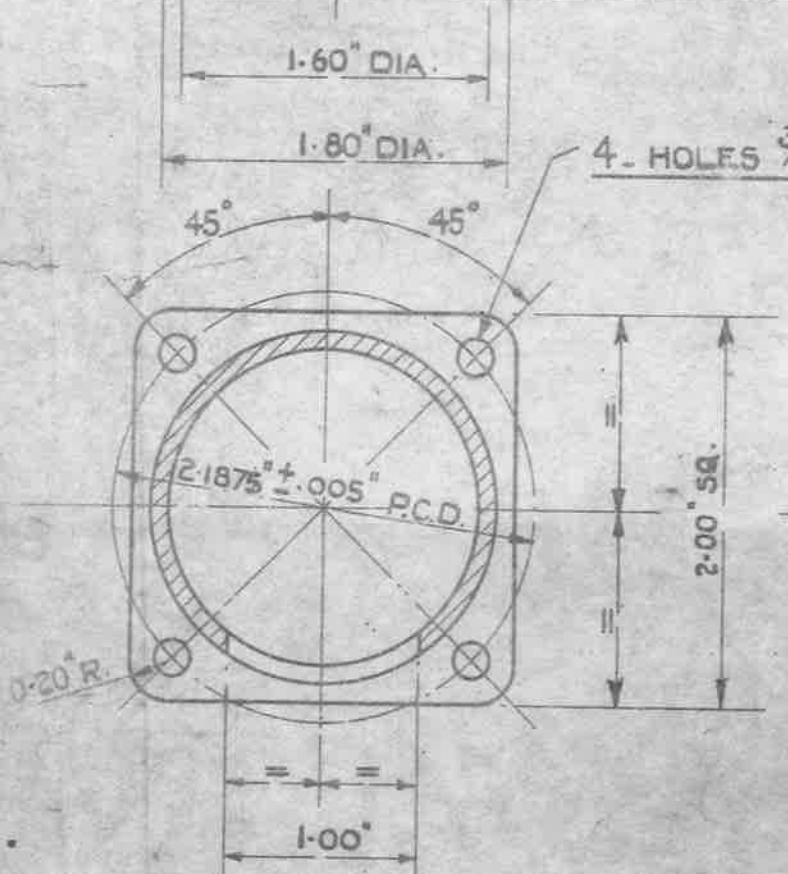
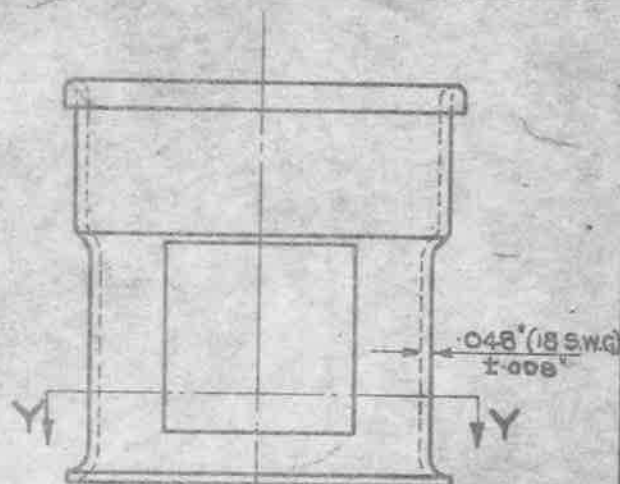
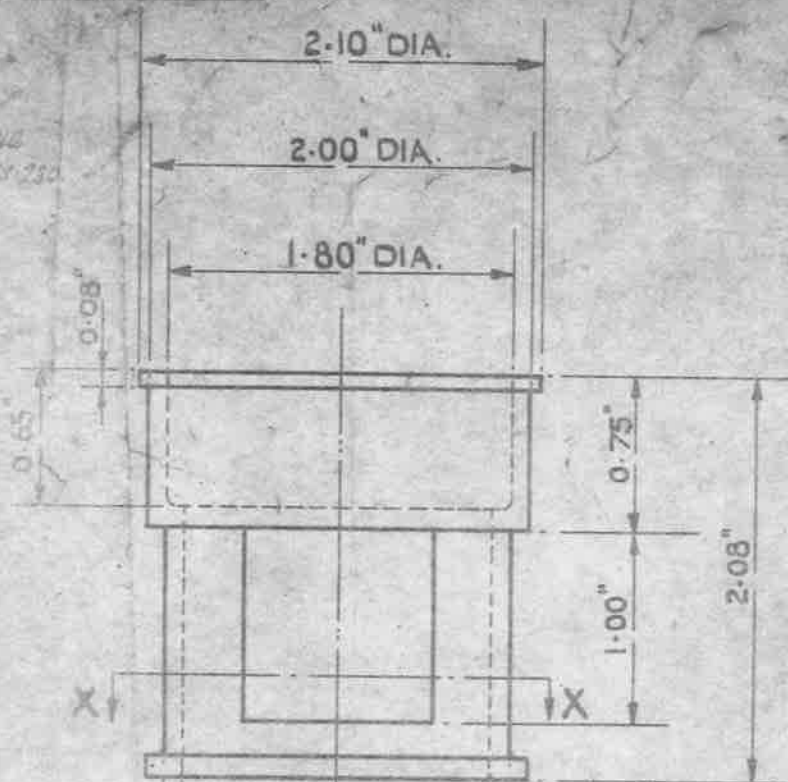
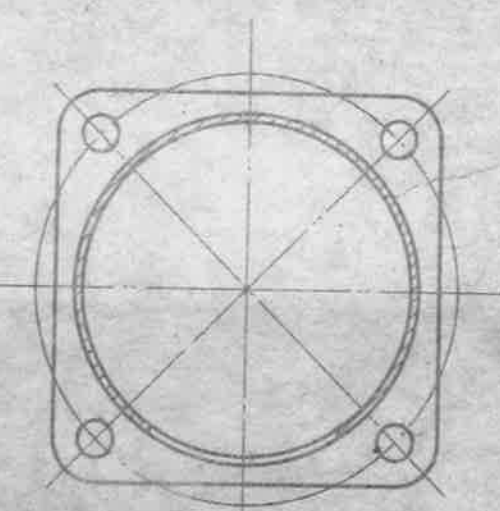


APPLICATION TO THE FOLLOWING TYPES OF FEATHERING SWITCHES:-

- 5C/2016 - 24 VOLTS - CATEGORY "B"
- 5C/2085 - 12 VOLTS - CATEGORY "B"
- 5C/3194 - 24 VOLTS - CATEGORY "B"
- 5C/3647 - 24 VOLTS - CATEGORY "A"



UNLIMITED DIMENSIONS TO BE WITHIN ± 0.02"



SECTION THROUGH Y.Y. SKETCH A.

SECTION THROUGH XX

NOTE:- GUARDS SPUN FROM ALUMINIUM TUBE OR SHEET AS SHOWN IN SKETCH A ABOVE MAY BE ACCEPTED. THE PRINCIPAL DIMENSIONS OF METAL GUARD MUST CONFORM WITH THOSE ABOVE. A.C.S. NUMBER TO BE STAMPED OR MOULDED ON EACH PART.

STORES REFERENCE No. 5K/2722

MATERIAL - FOR BAKELITE MOULDING, D.T.D. 453 (LATEST ISSUE) FINISH:- BLACK. FOR SPINNING, ALUMINIUM SHEET TO B.S.S. L.16 OR TUBE TO B.S.S.T.9 (LATEST ISSUES) FINISH:- ANODIC TREATMENT TO D.T.D. 910 (LATEST ISSUE) OR PICKLING TO D.T.D. 915 (LATEST ISSUE) FOLLOWED BY PAINTING OR ENAMELLING.

ISSUED BY ROYAL AIRCRAFT ESTABLISHMENT.	TITLE:- GUARD FOR FEATHERING SWITCH.				DRAWN K. Wilson	TRACED W. Jones 4.3.46
	ISSUE No. 1/2	ALTER ^N No.	MOD. No.	1640/2	CHECKED C.T. Reynolds	APPROVED 10/11/46