

OBSOLESCENT.
 ITEMS MARKED * - NO FURTHER MANUFACTURE. EXISTING STOCKS MAY BE USED.
 ITEMS UNMARKED - NOT TO BE USED FOR NEW DESIGNS.

EDGES MUST BE FREE FROM BURRS.

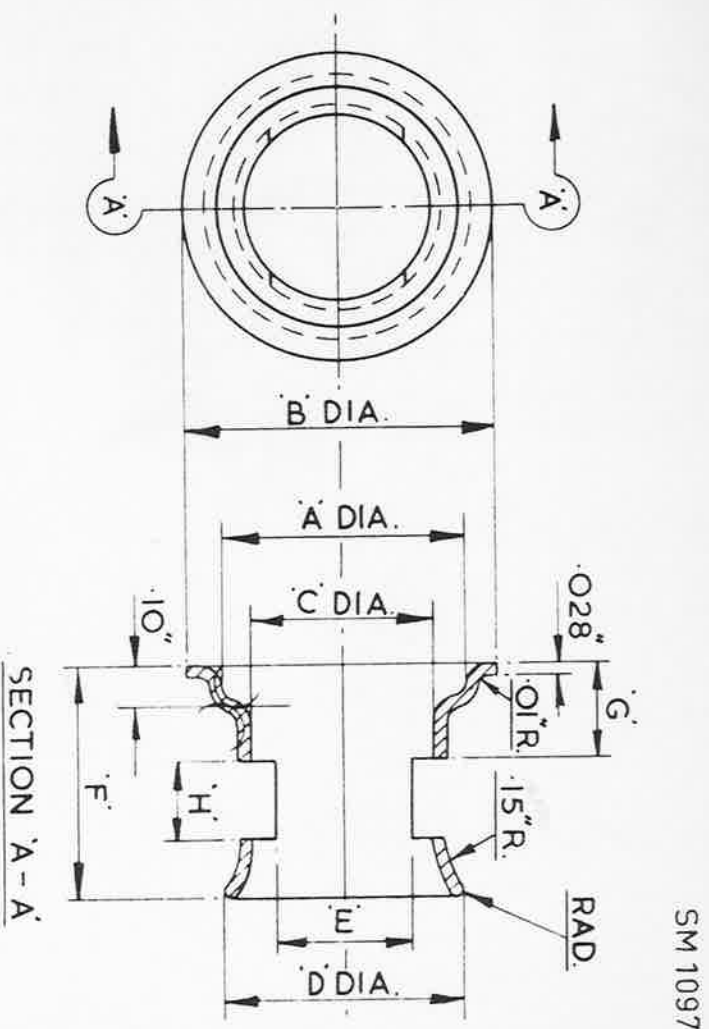
		A	B	C	D	E	F	G	H
STORES REF. No	MARK	+0.005" -0.005"	+0.005" -0.005"	+0.005" -0.005"	+0.005" -0.005"	+0.005" -0.005"	+0.005" -0.005"	+0.005" -0.005"	+0.005" -0.005"
5K/24	1	.430"	.560"	.187"	.31"	.130"	.55"	.20"	.20"
5K/25	2 *	.430"	.560"	.218"	.34"	.170"	.55"	.20"	.20"
5K/26	3	.430"	.560"	.281"	.40"	.20"	.55"	.20"	.20"
5K/27	4 *	.430"	.560"	.328"	.430"	.250"	.55"	.20"	.20"
5K/28	5	.430"	.560"	.375"	.470"	.250"	.55"	.20"	.20"
5K/29	6 *	.430"	.560"	.406"	.470"	.300"	.55"	.20"	.20"
5K/30	7	.620"	.800"	.468"	.60"	.350"	.60"	.25"	.20"
5K/31	8 *	.620"	.800"	.530"	.65"	.40"	.70"	.25"	.25"
5K/32	9 *	.800"	1.02"	.687"	.80"	.50"	.80"	.30"	.25"
5K/7	10	1.10"	1.25"	1.03"	1.125"	.75"	1.00"	.35"	.30"
5K/6	11 *	1.10"	1.25"	.687"	.80"	.50"	.80"	.30"	.25"
5K/2609	12 *	.63"	.80"	.62"	.67"	.40"	.70"	.25"	.20"
5K/2610	13	.82"	1.02"	.75"	.87"	.50"	.80"	.30"	.25"

MAT:- BRASS TUBE TO B.S. SPEC. 886, (LATEST ISSUE), OR BRASS SHEET (22 S.W.G) TO B.S. SPEC. 265 (LATEST ISSUE), ANNEALED, OR B.S. SPEC. 267, (LATEST ISSUE), ANNEALED.

FINISH:- ELECTRO-TINNED TO SPEC. D.T.D 924 (LATEST ISSUE)

MINISTRY OF SUPPLY APPLICATION FOR A.G.S SHEETS TO A.T.P. 4, CHESSINGTON, SURREY. GENERAL ENQUIRIES TO: A.D/S.A.B, ST GILES COURT, 1-13 ST GILES HIGH STREET, LONDON, W.C. 2.	TITLE:- SLEEVES, PLAIN CABLE, L.T. TYPE 1, CIRCULAR, No 1.		DRAWN From SKetch 14 E&I 8252	RE-DRAWN. JAB. 14-10-46.
	ISSUE No. 10	10	CHECKED E.T. Reynolds 26 15-11-46 39	APPROVED G.E.B. 18 3/40
	ALTER No. MOD/ACS 993	SM875		

MARK	A	B	C	D	E	F	G	H
	$\pm .005$	$\pm .005$	$\pm .005$	$\pm .005$	$\pm .005$	$\pm .005$	$\pm .005$	$\pm .005$
1	.430"	.560"	.187"	.310"	.130"	.550"	.200"	.200"
2	.430"	.560"	.218"	.340"	.170"	.550"	.200"	.200"
3	.430"	.560"	.281"	.400"	.200"	.550"	.200"	.200"
4	.430"	.560"	.328"	.430"	.250"	.550"	.200"	.200"
5	.430"	.560"	.375"	.470"	.250"	.550"	.200"	.200"
6	.430"	.560"	.406"	.470"	.300"	.550"	.200"	.200"
7	.620"	.800"	.468"	.600"	.350"	.600"	.250"	.200"
8	.620"	.800"	.530"	.650"	.400"	.700"	.250"	.250"
9	.800"	1.02"	.687"	.800"	.500"	.800"	.300"	.250"
10	1.10"	1.25"	1.03"	1.125"	.750"	1.00"	.350"	.300"
11	1.10"	1.25"	.687"	.800"	.500"	.800"	.300"	.250"
12	.630"	.800"	.620"	.670"	.400"	.700"	.250"	.200"
13	.820"	1.02"	.750"	.870"	.500"	.800"	.300"	.250"



EDGES MUST BE FREE FROM BURRS.

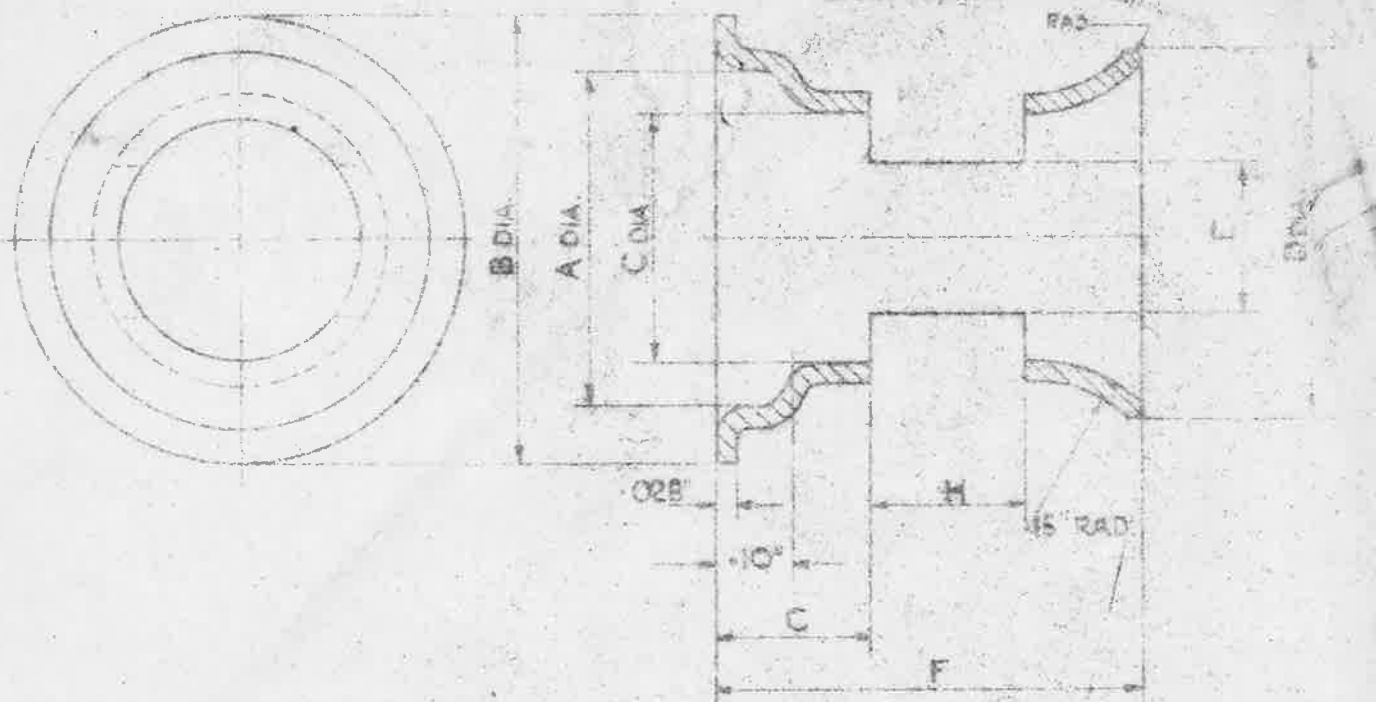
USED ON	DESIGNED	DRAWN	TRACED	CHECKED	APPROVED FOR	DATE	REF	DRAWING OR PART NO.	DESCRIPTION	LIMITS NOT SHOWN	AS DRAWN	OPP HAND	MATERIAL - REMARKS
	F.A.L.	F.A.L.	F.A.L.	F.A.L.	S.B.A.C. <i>M. Bluer</i>	7.5.63	HT	PT	ELECTRO TINNED TO SCALE D.T.D. 924				THIRD ANGLE PROJECTION.
								22 SWG.	BRASS SHEET (ANNEALED) OR BRASS TUBE (ANNEALED)				BS. 265 OR 267
								22 SWG.					BS. 885.

ISSUED BY THE SOCIETY OF BRITISH AIRCRAFT CONSTRUCTORS LTD.,
29, KING STREET, ST. JAMES'S, LONDON, S.W. 1.

SLEEVES, PLAIN CABLE, L.T. TYPE I.
CIRCULAR No. 1.

A.G.S. 1651.

ISSUE 12
ALT. No. F106



		A	B	C	D	E	F	G	H
STOKES PER NO	MARK	+005 -025	+005 -005	+005 -005	+005 -005	+005 -005	+005 -005	+005 -005	+005 -005
SK 2	1	.430	.560	.187	.3	.30	.55	.20	.20
SK 25	2	.430	.560	.218	.34	.170	.55	.20	.29
SK 26	3	.430	.560	.287	.40	.20	.55	.20	.20
SK 27	4	.430	.560	.328	.430	.250	.55	.20	.20
SK 28	5	.430	.560	.375	.470	.250	.55	.20	.20
SK 29	6	.430	.560	.406	.470	.300	.55	.20	.20
SK 30	7	.620	.800	.468	.60	.350	.60	.25	.20
SK 31	8	.620	.800	.530	.65	.40	.70	.25	.25
SK 32	9	.800	1.02	.687	.80	.50	.80	.30	.25
SK 7	10	1.10	1.25	1.03	1.125	.75	1.00	.35	.30
SK 6	11	1.10	1.25	.687	.80	.50	.80	.30	.25
SK 2809	12	.63	.80	.62	.67	.40	.70	.25	.20
SK 280	13	.82	1.02	.75	.67	.50	.80	.30	.25

MATERIAL - BRASS .028 (22 SWG) THICK

ISSUED BY ROYAL AIRCRAFT ESTABLISHMENT	TITLE - SLEEVE TYPE CIRCULAR FOR CABLES ELECTRICITY				DRAWN FROM MODEL EXT 5554	RE-TRACED RC-184
	ISSUE NO 1	REVISED A 1	REVISED A 2	REVISED A 3	CHECKED IN HALLS	APPROVED