

OBSOLESCE

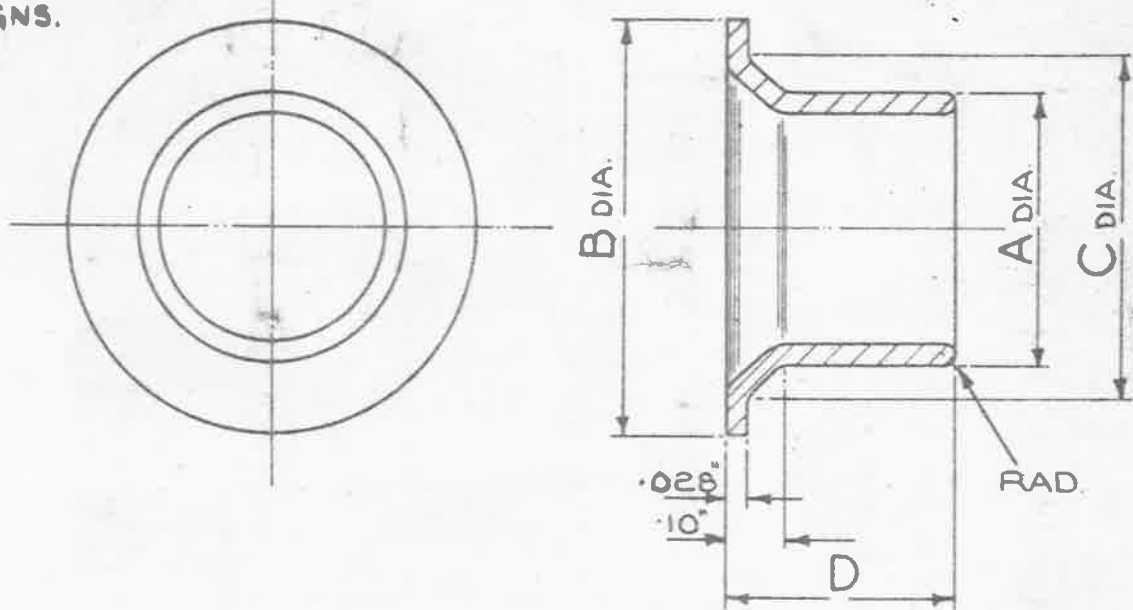
ITEMS MARKED * - NO FURTHER MANUFACTURE.
EXISTING STOCKS MAY BE USED.
ITEMS UNMARKED - NOT TO BE USED FOR NEW
DESIGNS.

MINISTRY OF
SUPPLY.

AGS. No 1653

SHEET No 1

No OF SHEETS 1



ALL SHARP EDGES TO BE ROUNDED OFF.

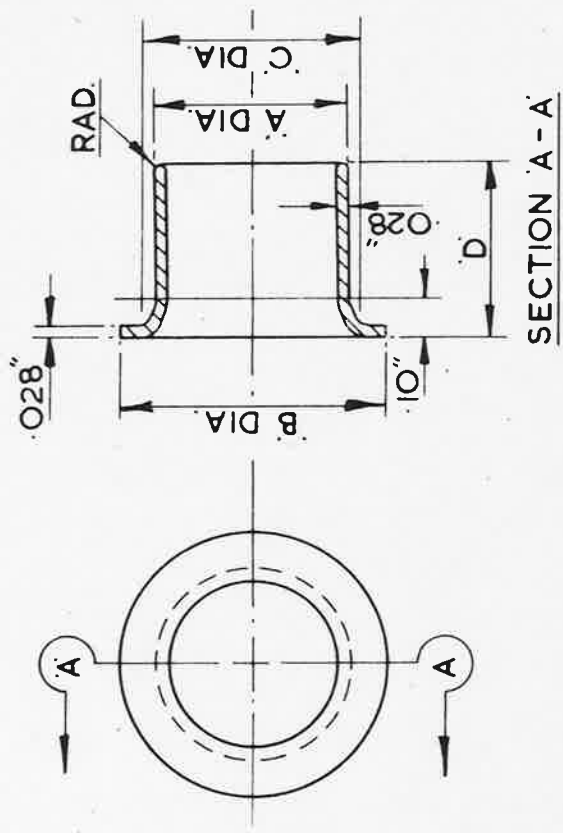
STORES REF. No	MARK	A ±.001	B ±.005	C ±.005	D ±.005	STORES REF. No	MARK	A ±.001	B ±.005	C ±.005	D ±.005
5K/41	1	.346	.560	.42	.40	5K/2411	16*	.386	.88	.72	.50
5K/42	2	.386	.560	.42	.40	5K/2413	17*	.486	.88	.72	.50
5K/43	3	.416	.680	.55	.40	5K/2415	18*	.666	.88	.72	.50
5K/44	4	.496	.680	.55	.450	5K/2607	19	.246	.56	.40	.37
5K/45	5*	.526	.800	.60	.450	5K/2598	20	.206	.56	.40	.37
5K/46	6*	.626	.900	.70	.450	5K/2601	21*	.726	.88	.726	.50
5K/47	7*	.676	1.02	.78	.50	5K/2603	22*	.766	1.10	.92	.50
5K/48	8*	.836	1.15	.92	.50	5K/2605	23*	.886	1.10	.95	.50
5K/49	9*	.946	1.25	1.03	.55	5K/2680	24*	.936	1.23	1.00	.50
5K/8	10*	.626	1.25	1.03	.55						
5K/9	11*	.676	1.25	1.03	.55						
5K/2403	12*	.696	1.10	.92	.50						
5K/2405	13*	.856	1.10	.92	.50						
5K/2407	14*	.666	.98	.80	.50						
5K/2409	15*	.746	.98	.80	.50						

MATERIAL:- BRASS. 028 (22SWG) THICK.

FINISH:- ELECTRO-TINNED, THICKNESS NOT LESS THAN .0002

ISSUED BY THE ROYAL AIRCRAFT ESTABLISHMENT.	TITLE:- SLEEVES, BONDING, METAL BRAIDED CABLE. LT. TYPE 2, CIRCULAR INNER.				DRAWN. <i>[Signature]</i>	TRACED J.A.B. 25-1-43
	ISSUE No	11	12	12	CHECKED <i>[Signature]</i>	APPROVED <i>[Signature]</i>
	ALTERS No	853	993	5M878		

SM 1097
 ISSUE 13
 ALT. No. F106



ALL SHARP EDGES TO BE ROUNDED OFF.
 ELECTRO-TINNED, THICKNESS NOT LESS THAN .0002"

MARK	A	B	C	D
	$\pm .001$	$\pm .005$	$\pm .005$	$\pm .005$
16	.386	.880	.720	.500
17	.486	.880	.720	.500
18	.666	.880	.720	.500
19	.246	.560	.400	.370
20	.206	.560	.400	.370
21	.726	.880	.726	.500
22	.766	1.10	.920	.500
23	.886	1.10	.950	.500
24	.936	1.23	1.00	.500

MARK	A	B	C	D
	$\pm .001$	$\pm .005$	$\pm .005$	$\pm .005$
1	.346	.560	.420	.400
2	.386	.560	.420	.400
3	.416	.680	.550	.400
4	.496	.680	.550	.450
5	.526	.800	.600	.450
6	.626	.900	.700	.450
7	.676	1.02	.780	.500
8	.836	1.15	.920	.500
9	.946	1.25	1.03	.550
10	.626	1.25	1.03	.550
11	.676	1.25	1.03	.550
12	.696	1.10	.920	.500
13	.856	1.10	.920	.500
14	.666	.980	.800	.500
15	.746	.980	.800	.500

REF.	DRAWING OR PART No.	DESCRIPTION	AS ABOVE	SCALE	LIMITS NOT SHOWN	HT	PT	AS ABOVE	THIRD ANGLE PROJECTION.
		BRASS ROD						OR	B.S. 249.
		BRASS SHEET						OR	B.S. 265.
		BRASS TUBE (ANNEALED)							B.S. 885.
									MATERIAL - REMARKS

USED ON	APPROVED FOR S.B.A.C.	DATE	
	<i>F.A.L.</i>	7.5.63	
DESIGNED	DRAWN	TRACED	CHECKED
	F.A.L.	F.A.L.	F.A.L.
ISSUED BY THE SOCIETY OF BRITISH AIRCRAFT CONSTRUCTORS LTD., 29, KING STREET, ST. JAMES'S, LONDON, S.W.1.			
SIZE B.S.-8"x13"			