

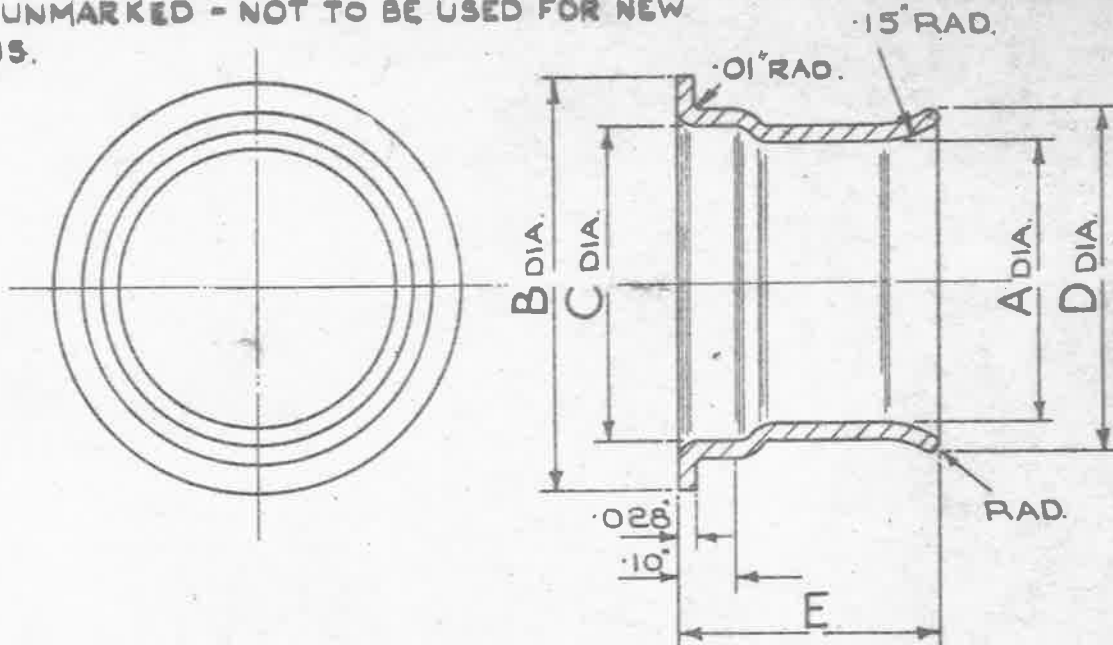
OBSOLESCE

ITEMS MARKED * - NO FURTHER MANUFACTURE.
EXISTING STOCKS MAY BE USED.
ITEMS UNMARKED - NOT TO BE USED FOR NEW
DESIGNS.

MINISTRY
OF SUPPLY

AGS. No 1654

SHEET No 1 / No OF SHEETS 1



ALL SHARP EDGES TO BE ROUNDED OFF

STORES REF. No	MARK	A	B	C	D	E
		±.001	±.005	±.005	±.005	±.005
5K/50	1	.370	.560	.430	.470	.450
5K/51	2	.410	.560	.430	.470	.450
5K/52	3	.440	.680	.560	.60	.450
5K/53	4	.520	.680	.560	.60	.50
5K/54	5 *	.550	.80	.620	.650	.50
5K/55	6 *	.650	.90	.720	.750	.50
5K/56	7 *	.70	1.02	.810	.80	.550
5K/57	8 *	.860	1.15	.940	.98	.550
5K/58	9 *	.970	1.25	1.06	1.10	.60
5K/11	10 *	.650	1.25	1.06	.75	.60
5K/12	11 *	.70	1.25	1.06	.80	.60
5K/2404	12 *	.720	1.10	.94	.90	.55
5K/2406	13 *	.880	1.10	.94	1.00	.55
5K/2408	14 *	.690	.98	.82	.88	.55
5K/2410	15 *	.770	.98	.82	.88	.55

STORES REF. No	MARK	A	B	C	D	E
		±.001	±.005	±.005	±.005	±.006
5K/2412	16 *	.41	.88	.74	.60	.55
5K/2414	17 *	.51	.88	.74	.70	.55
5K/2416	18 *	.69	.88	.74	.80	.55
5K/2608	19	.27	.56	.42	.37	.42
5K/2599	20	.23	.56	.42	.37	.42
5K/2602	21 *	.75	.88	.75	.806	.55
5K/2604	22 *	.79	1.10	.94	.90	.55
5K/2606	23 *	.91	1.10	.97	1.00	.55
5K/2681	24 *	.96	1.23	1.02	1.08	.55

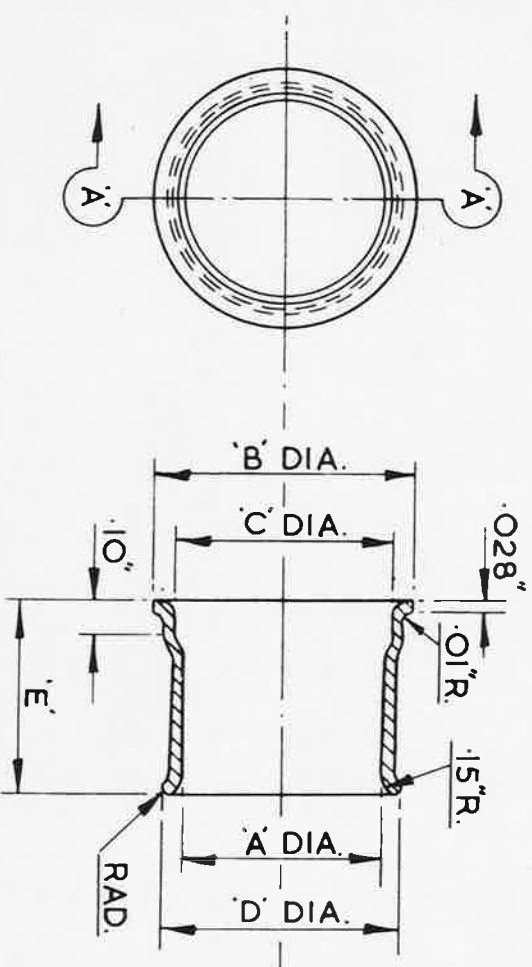
MATERIAL:- BRASS TUBE TO B.S. SPEC. 886 OR BRASS SHEET (22 S.W.G.)
TO B.S. SPEC. 265 (ANNEALED)

FINISH:- ELECTRO-TINNED, TO SPEC. D.T.D. 924 (LATEST ISSUE)

ISSUED BY THE ROYAL AIRCRAFT ESTABLISHMENT.	TITLE:- SLEEVES, BONDING, METAL BRAIDED CABLE, L.T. TYPE 2, CIRCULAR, OUTER.				DRAWN. <i>[Signature]</i>	TRACED J.A.B. 26-1-43
	ISSUE No	11	12	13	13	CHECKED <i>[Signature]</i> 26-1-43
ALTER No	A. 5048/26-1-43 SAC 1833/88				5M873	

MARK	A	B	C	D	E
	$\pm .001$	$\pm .005$	$\pm .005$	$\pm .005$	$\pm .005$
1	.370	.560	.430	.470	.450
2	.410	.560	.430	.470	.450
3	.440	.680	.560	.600	.450
4	.520	.680	.560	.600	.500
5	.550	.800	.620	.650	.500
6	.650	.900	.720	.750	.500
7	.700	1.02	.810	.800	.550
8	.860	1.15	.940	.980	.550
9	.970	1.25	1.06	1.10	.600
10	.650	1.25	1.06	.750	.600
11	.700	1.25	1.06	.800	.600
12	.720	1.10	.940	.900	.550
13	.880	1.10	.940	1.00	.550
14	.690	.980	.820	.880	.550
15	.770	.980	.820	.880	.550

MARK	A	B	C	D	E
	$\pm .001$	$\pm .005$	$\pm .005$	$\pm .005$	$\pm .005$
16	.410	.880	.740	.600	.550
17	.510	.880	.740	.700	.550
18	.690	.880	.740	.800	.550
19	.270	.560	.420	.370	.420
20	.230	.560	.420	.370	.420
21	.750	.880	.750	.806	.550
22	.790	1.10	.940	.900	.550
23	.910	1.10	.970	1.00	.550
24	.960	1.23	1.02	1.08	.550



ALL SHARP EDGES TO BE ROUNDED OFF.

SM 1097

ISSUE	ALT. No.
14	F106

USED ON	DESIGNED	DRAWN	TRACED	CHECKED	APPROVED FOR	DATE	REF.	DRAWING OR PART No.	DESCRIPTION	LIMITS NOT SHOWN	AT DRAWN UNIT	OPP HAND	MATERIAL - REMARKS
		F.A.L.	F.A.L.	F.A.L.	S.B.A.C.	7.5.63		22 SWG.	BRASS SHEET (ANNEALED) OR				BS. 265.
		F.A.L.	F.A.L.	F.A.L.	<i>M. J. Jones</i>			22 SWG.	BRASS TUBE (ANNEALED)				BS. 885.

ISSUED BY THE SOCIETY OF BRITISH AIRCRAFT CONSTRUCTORS LTD.,
 29, KING STREET, ST. JAMES'S, LONDON, S.W.1.

HT PT
 SLEEVES, BONDING, METAL BRAIDED CABLE,
 L.T. TYPE 2, CIRCULAR OUTER.

THIRD ANGLE PROJECTION.
 A.G.S. 1654.