

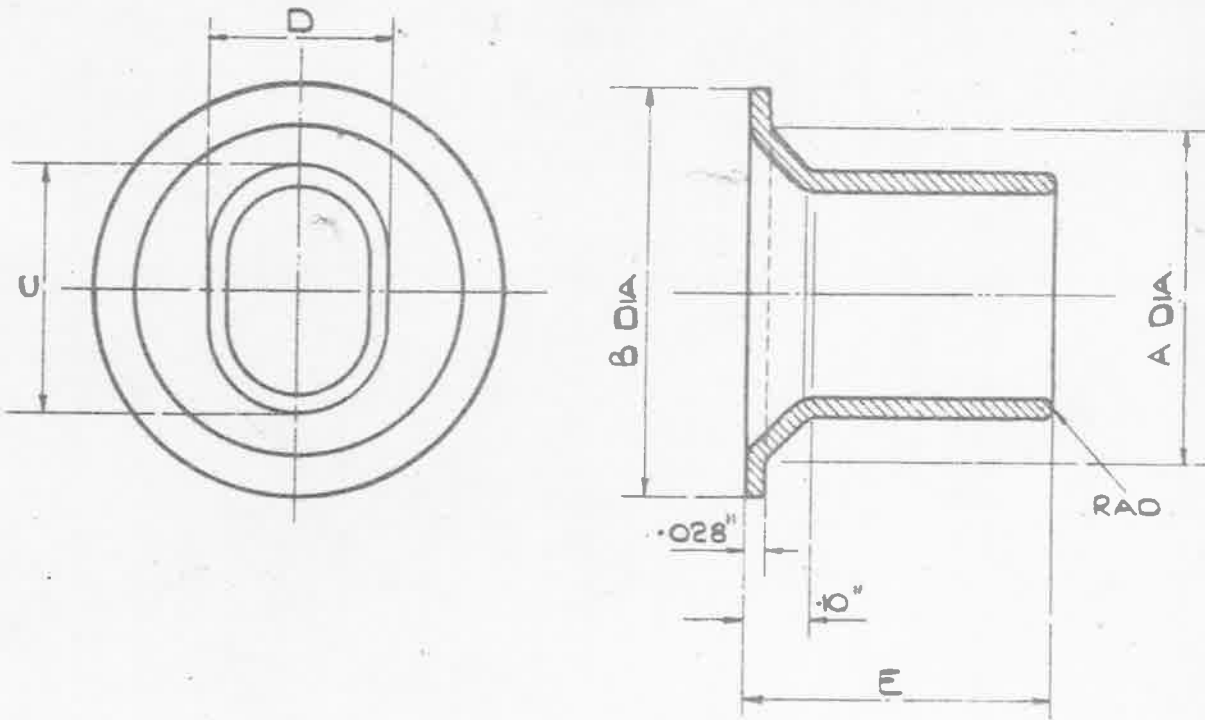
OBSOLESCE

ITEMS MARKED * - NO FURTHER MANUFACTURE.
EXISTING STOCKS MAY BE USED.
ITEMS UNMARKED - NOT TO BE USED FOR NEW DESIGNS.

MINISTRY OF SUPPLY

AGS. N^o 1655

SHEET N^o 1 | N^o OF SHEETS 1



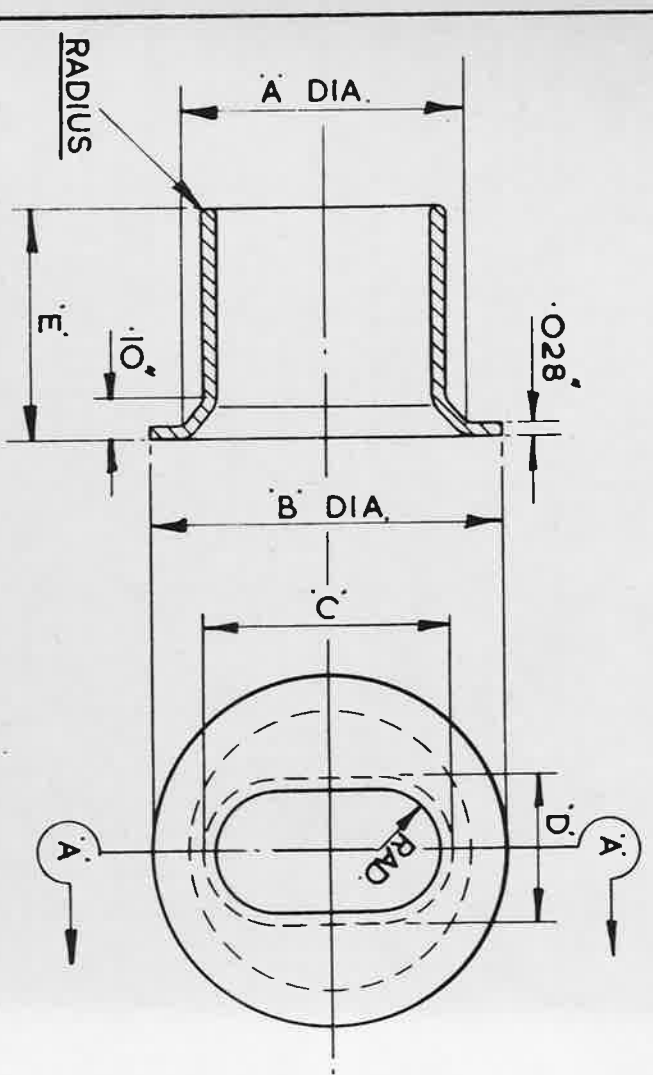
ALL SHARP EDGES TO BE ROUNDED OFF.

STORES REF. N ^o	MARK	A	B	C	D	E
		+0.005" -0.005"	+0.005" -0.005"	+0.001" -0.001"	+0.001" -0.001"	+0.005" -0.005"
5K/59	1	.420"	.560"	.340"	.240"	.400"
5K/60	2 *	.550"	.680"	.400"	.280"	.450"
5K/61	3 *	.700"	.900"	.620"	.420"	.500"
5K/2826	4 *	.420"	.560"	.320"	.210"	.400"
5K/2827	5	.630"	.800"	.500"	.300"	.550"
5K/2828	6	.720"	.900"	.630"	.380"	.600"
5K/2829	7	.420"	.560"	.400"	.260"	.400"

MAT. :- BRASS TUBE TO B.S. SPEC: 886 OR BRASS SHEET (22 SWG.)
TO B.S. SPEC: 265 (ANNEALED)

FINISH:- ELECTRO-TINNED, TO SPEC: D.T.D. 924 (LATEST ISSUE)

ISSUED BY THE ROYAL AIRCRAFT ESTABLISHMENT	TITLE :- SLEEVES, BONDING, METAL BRAIDED CABLE, L.T. TYPE 2, OVAL, INNER.				DRAWN FROM SKETCH BY E&I 8250	TRACED W.B.H. 12-8-39
	ISSUE N ^o	6	7	8	CHECKED C.T. Reynolds 26	APPROVED. 18.3.40
	ALTER N ^o	AS/AGS 817	AS/AGS 1353	SM 873		



MARK	DIMENSIONS				
	A	B	C	D	E
1	.420" ±.005"	.560" ±.005"	.340" ±.001"	.240" ±.001"	.400" ±.005"
2	.550" ±.005"	.680" ±.005"	.400" ±.001"	.280" ±.001"	.450" ±.005"
3	.700" ±.005"	.900" ±.005"	.620" ±.001"	.420" ±.001"	.500" ±.005"
4	.420" ±.005"	.560" ±.005"	.320" ±.001"	.210" ±.001"	.400" ±.005"
5	.630" ±.005"	.800" ±.005"	.500" ±.001"	.300" ±.001"	.550" ±.005"
6	.720" ±.005"	.900" ±.005"	.630" ±.001"	.380" ±.001"	.600" ±.005"
7	.420" ±.005"	.560" ±.005"	.400" ±.001"	.260" ±.001"	.400" ±.005"

ALL SHARP EDGES TO BE ROUNDED OFF.

DESIGNED	DRAWN	TRACED	CHECKED	APPROVED FOR	DATE
F.A.L.	F.A.L.	F.A.L.	F.A.L.	<i>J.M. Jones</i>	7.5.63

ISSUED BY THE SOCIETY OF BRITISH AIRCRAFT CONSTRUCTORS LTD.,
29, KING STREET, ST. JAMES'S, LONDON, S.W.1.

REF.	DRAWING OR PART No.	DESCRIPTION	LIMITS NOT SHOWN	AS DRAWN HAND UNIT QTY	OPP. HAND	MATERIAL - REMARKS
	22 SWG.	BRASS TUBE (ANNEALED)				B.S. 885
	OR 22 SWG.	BRASS SHEET (ANNEALED)				B.S. 265

HT PT ELECTRO TINNED TO SCALE
SLEEVES, BONDING, METAL BRAIDED CABLE
L.T. TYPE 2. OVAL, INNER.
A.G.S. 1655.

SM1097	ISSUE No. 9	ALT. No. F106.
--------	-------------	----------------