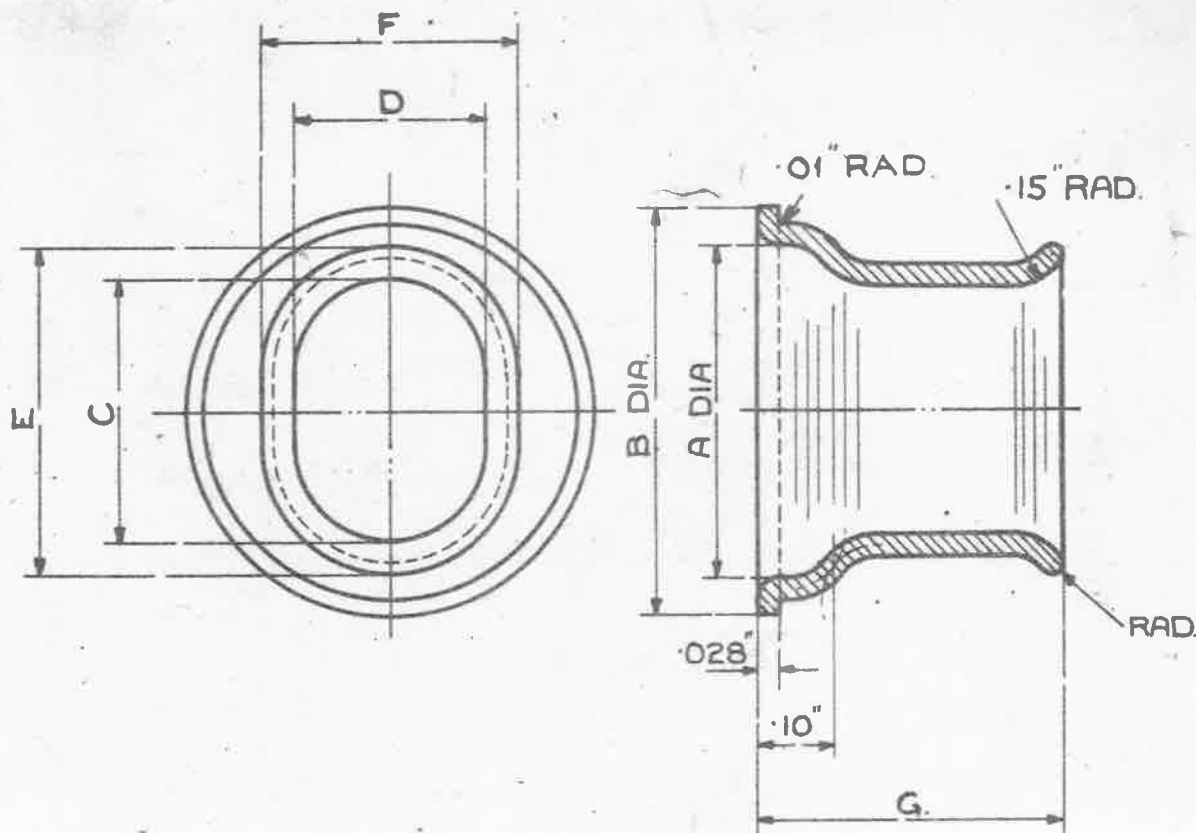


OBSOLESCE

ITEMS MARKED * - NO FURTHER MANUFACTURE, EXISTING STOCKS MAY BE USED.
 ITEMS UNMARKED - NOT TO BE USED FOR NEW DESIGNS.

MINISTRY OF SUPPLY **AGS. No 1656**
SHEET No 1 | **No OF SHEETS 1**



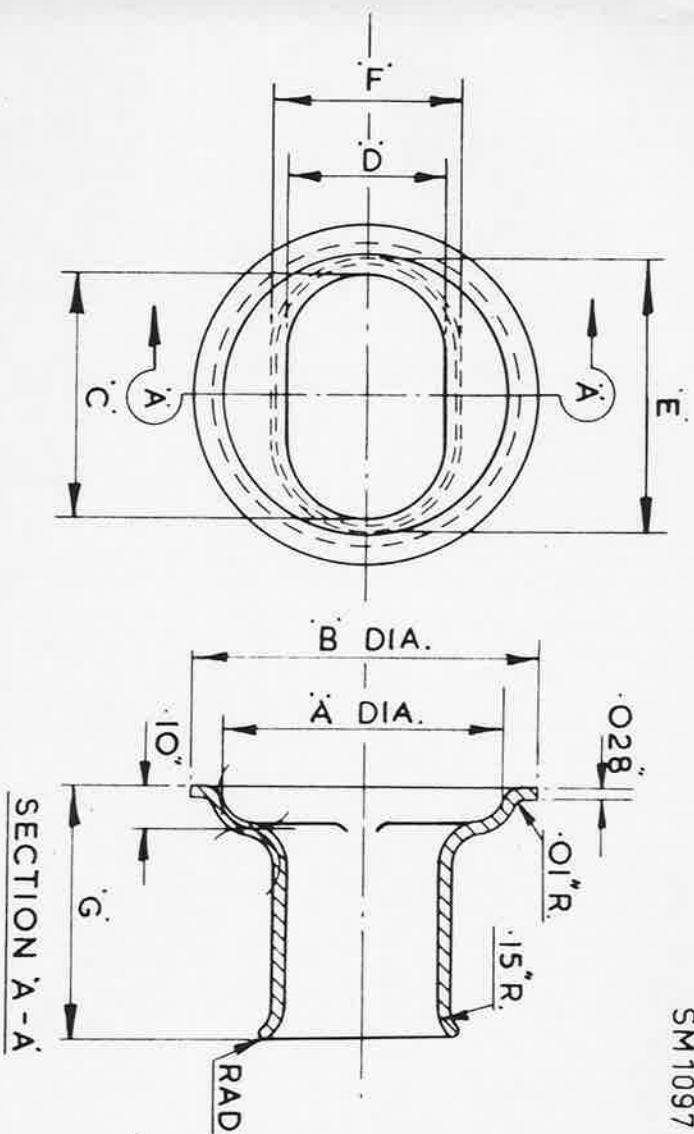
ALL SHARP EDGES TO BE ROUNDED OFF.

STORES REF. NO	MARK.	A	B	C	D	E	F	G
		+0.005 -0.005	+0.005 -0.005	+0.001 -0.001	+0.001 -0.001	+0.005 -0.005	+0.005 -0.005	+0.005 -0.005
5K/62	1	.430	.560	.365	.265	.470	.370	.450
5K/63	2 *	.560	.680	.425	.305	.530	.410	.50
5K/64	3 *	.720	.90	.645	.445	.750	.550	.550
5K/2830	4 *	.43"	.56"	.345"	.235"	.400"	.30"	.45"
5K/2831	5	.64"	.80"	.525"	.325"	.620"	.43"	.60"
5K/2832	6	.72"	.90"	.655"	.405"	.730"	.50"	.65"
5K/2833	7	.43"	.56"	.425"	.285"	.475"	.40"	.45"

MATERIAL: BRASS TUBE TO B.S. SPEC. 886 OR BRASS SHEET (22 SW.G.) TO B.S. SPEC. 265 (ANNEALED).
FINISH: ELECTRO-TINNED, TO SPEC. D.T.D 924, (LATEST ISSUE)

ISSUED BY THE ROYAL AIRCRAFT ESTABLISHMENT	TITLE: -SLEEVES, BONDING, METAL BRAIDED CABLE, LT. TYPE 2, OVAL, OUTER.					DRAWN. FROM SKETCH No E & I. 8251.	TRACED M. HILLMAN. 21-9-39.
	ISSUE No	6	7	8	9	CHECKED C.T. Reynolds	APPROVED.
	ALTER No	A.5/AGS 205	A.5/AGS 318	A.5/AGS 363	A.5/AGS 923	SM 873	SM 18.5.40

MARK	A	B	C	D	E	F	G
	$\begin{matrix} +.005 \\ -.005 \end{matrix}$	$\begin{matrix} +.005 \\ -.005 \end{matrix}$	$\begin{matrix} +.001 \\ -.001 \end{matrix}$	$\begin{matrix} +.001 \\ -.001 \end{matrix}$	$\begin{matrix} +.005 \\ -.005 \end{matrix}$	$\begin{matrix} +.005 \\ -.005 \end{matrix}$	$\begin{matrix} +.005 \\ -.005 \end{matrix}$
1	.430"	.560"	.365"	.265"	.470"	.370"	.450"
2	.560"	.680"	.425"	.305"	.530"	.410"	.500"
3	.720"	.900"	.645"	.445"	.750"	.550"	.550"
4	.430"	.560"	.345"	.235"	.400"	.300"	.450"
5	.640"	.800"	.525"	.325"	.620"	.430"	.600"
6	.720"	.900"	.655"	.405"	.730"	.500"	.650"
7	.430"	.560"	.425"	.285"	.475"	.400"	.450"



ALL SHARP EDGES TO BE ROUNDED OFF.

SM1097

ISSUE 10
ALT. No. F106

USED ON	DRAWN	TRACED	CHECKED	APPROVED FOR	DATE	REF	DRAWING OR PART No.	DESCRIPTION	LIMITS NOT SHOWN	AS DRAWN	OP. HAND	MATERIAL - REMARKS
	F.A.L.	F.A.L.	F.A.L.	S.B.A.C. <i>M. A. ...</i>	7.5.63	HT	PT	ELECTRO TINNED TO SCALE DTD 924				THIRD ANGLE PROJECTION.
								22 SWG. BRASS SHEET (ANNEALED) OR				B.S. 265
								22 SWG. BRASS TUBE (ANNEALED)				B.S. 885
ISSUED BY THE SOCIETY OF BRITISH AIRCRAFT CONSTRUCTORS LTD., 29, KING STREET, ST. JAMES'S, LONDON, S.W. 1.						SLEEVES, BONDING, METAL BRAIDED CABLE, L.T. TYPE 2, OVAL OUTER.			A.G.S. 1656.			

HT 10/2/63