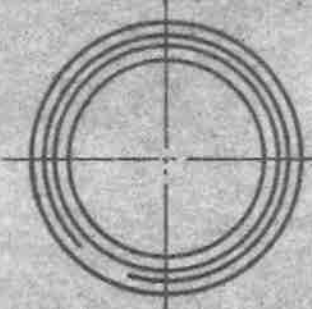
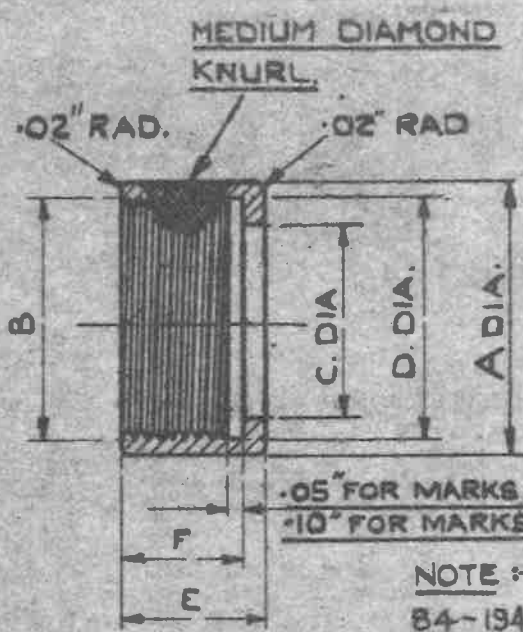


**OBSOLESCENT**  
 ITEMS MARKED \* - NO FURTHER  
 MANUFACTURE. EXISTING STOCKS  
 MAY BE USED.  
 ITEMS UNMARKED-NOT TO BE  
 USED FOR NEW DESIGNS.

MINISTRY OF  
 SUPPLY

AGS No 1658

SHEET No 1 | No OF SHEETS 1



.05" FOR MARKS 0 TO 3 AND 8 TO 11.  
 .10" FOR MARKS 3A TO 7A.

NOTE: SCREW THREADS TO B.S. SPEC.  
 84-1940. FREE FIT.

MAT:- STEEL TO B.S. SPECIFICATIONS S1, EN14 OR 16. (LATEST ISSUES)  
 FINISH:- CADMIUM PLATING TO SPEC. D.T.O. 904. (LATEST ISSUE).

NOTE:- ZINC-BASED DIE-CASTINGS TO A.G.S. 1658,  
 ISSUE 5, MUST NOT BE USED.

MARK.	B		T.P.I.	C	D	E	F	REF. NO.	THREAD TO PASS A.I.D GAUGE NO.
	A	DIA.							
0	±.005"			±.005"	±.005"	±.005"	±.005"	5K/87	
1 *	.700"	.625"	26	.50"	.630"	.310"	.260"	5K/88	V.0241.
1A *	.850"	.750"	26	.50"	.770"	.370"	.320"	5K/89	
2	.850"	.750"	26	.625"	.770"	.370"	.320"	5K/90	V.0249
2A *	.950"	.875"	26	.625"	.90"	.370"	.320"	5K/91	V.0257
3	.950"	.875"	26	.700"	.90"	.370"	.320"	5K/92	
3A *	1.10"	1.00"	16	.700"	1.02"	.370"	.320"	5K/93	V.7308.
4	1.10"	1.00"	16	.800"	1.02"	.370"	.320"	5K/94	
4A *	1.20"	1.125"	16	.800"	1.13"	.50"	.450"	5K/95	V.7302.
5	1.20"	1.125"	16	.900"	1.13"	.50"	.450"	5K/96	
5A *	1.350"	1.25"	16	.900"	1.26"	.50"	.450"	5K/97	V.7309.
6 *	1.350"	1.25"	16	1.03"	1.26"	.50"	.450"	5K/98	
6A *	1.460"	1.375"	16	1.03"	1.38"	.50"	.450"	5K/99	V.7310.
7	1.460"	1.375"	16	1.18"	1.38"	.50"	.450"	5K/100	
7A *	1.550"	1.437"	16	1.18"	1.44"	.50"	.450"	5K/101	V.7311.
8 *	.95"	<sup>13</sup> / <sub>16</sub> "	20	.625"	.83"	.50"	.45"	5K/145	V.7254
9 *	1.00"	.90"	20	.625"	.92"	.50"	.45"	5K/146	V.7256.
10 *	1.05"	<sup>15</sup> / <sub>16</sub> "	20	.80"	.96"	.50"	.45"	5K/147	V.7255
11 *	.75"	.687"	26	.57"	.69"	.37"	.32"	5K/2364	

ISSUED BY  
 ROYAL  
 AIRCRAFT  
 ESTABLISHMENT

TITLE:-  
 GLAND NUT

ISSUE NO 7 1/2 8 1/2 5M8/2

ALTERS NO AS/ALS AS/ALS MOW/ALS MOW/ALS

DRAWN.  
 J. Cro

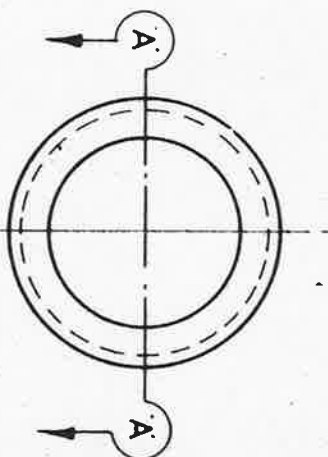
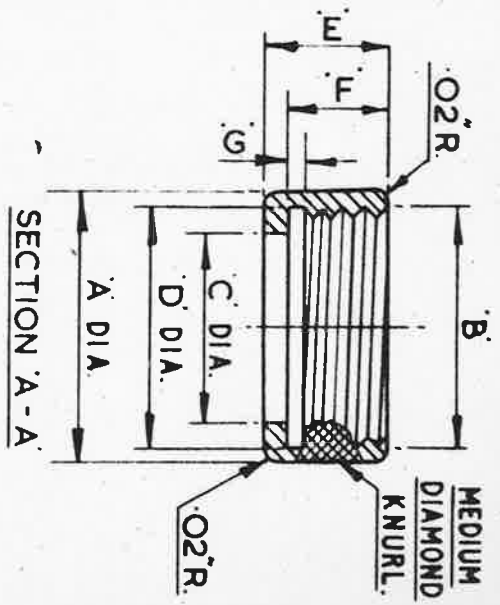
CHECKED  
 Ward

TRACED  
 19.14.10.40

APPROVED.  
 15.10.40

MARK	A	B	C	D	E	F	G
	±.005	DIA.	TP.L.	±.005	±.005	±.005	±.005
0	.70	.625	26	.50	.63	.31	.26
1	.70	.625	26	.50	.63	.37	.32
1A	.85	.75	26	.50	.77	.37	.32
2	.85	.75	26	.625	.77	.37	.32
2A	.95	.875	26	.625	.90	.37	.32
3	.95	.875	26	.70	.90	.37	.32
3A	1.10	1.00	16	.70	1.02	.37	.32
4	1.10	1.00	16	.80	1.02	.37	.32
4A	1.20	1.125	16	.80	1.13	.50	.45
5	1.20	1.125	16	.90	1.13	.50	.45

MARK	A	B	C	D	E	F	G
	±.005	DIA.	TP.L.	±.005	±.005	±.005	±.005
5A	1.35	1.25	16	.90	1.26	.50	.45
6	1.35	1.25	16	1.03	1.26	.50	.45
6A	1.46	1.375	16	1.03	1.38	.50	.45
7	1.46	1.375	16	1.18	1.38	.50	.45
7A	1.55	1.437	16	1.18	1.44	.50	.45
8	.95	13/16	20	.625	.83	.50	.45
9	1.00	.90	20	.625	.92	.50	.45
10	1.05	15/16	20	.80	.96	.50	.45
11	.75	.687	26	.57	.69	.37	.32



NOTE:- ZINC-BASED DIE-CASTINGS TO AGS. 1658 ISSUE 5 MUST NOT BE USED.  
SCREW THREADS TO BS. SPEC. 84-1940 FREE FIT.

USED ON	DESIGNED	DRAWN	TRACED	CHECKED	APPROVED FOR	DATE	REF.	DRAWING OR PART No.	DESCRIPTION	LIMITS NOT SHOWN	AS DRAWN	OR HAND UNIT QTY	SI, EN, ID OR IB.	MATERIAL - REMARKS
	F.A.L.	F.A.L.	F.A.L.	F.A.L.	<i>M. Roberts</i>	19.6.63			HT	PT	CADMIUM PLATE TO DTD. 904		THIRD ANGLE PROJECTION.	
	ISSUED BY THE SOCIETY OF BRITISH AIRCRAFT CONSTRUCTORS LTD., 29, KING STREET, ST. JAMES'S, LONDON, S.W.1.													
	GLAND NUT.													
	A.G.S. 1658.													

ISSUE 12  
ALT. No. F106  
SM1098