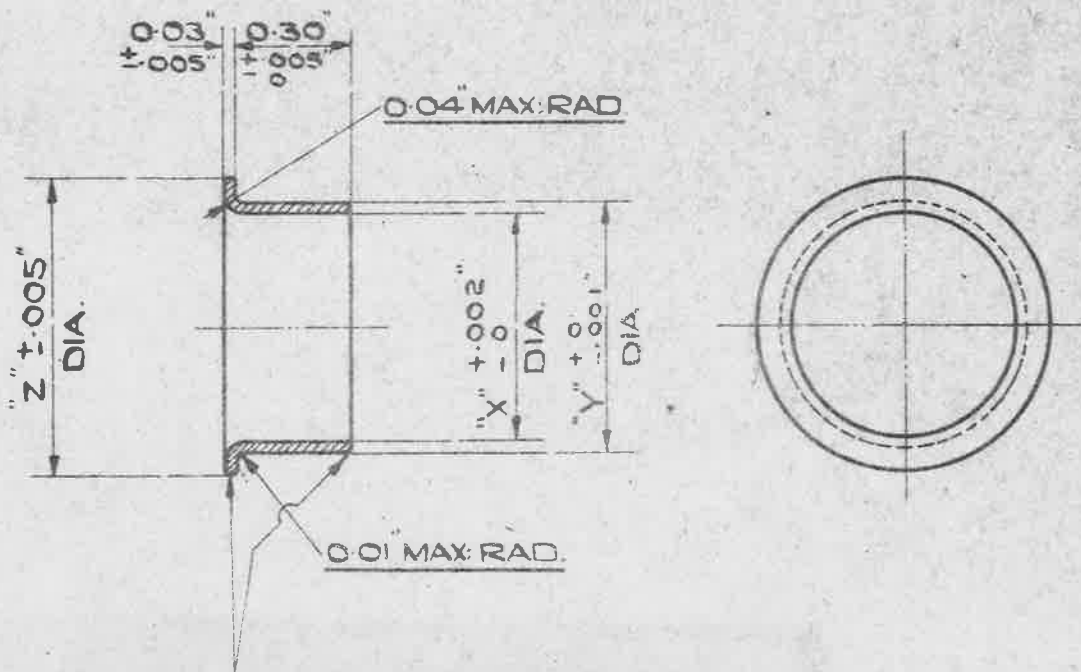


AO: 2-49  
2.9079/40



ALL SHARP EDGES TO BE ROUNDED OFF.

STORES REF NO	MARK	DIM <sup>N</sup> X	DIM <sup>N</sup> Y	DIM <sup>N</sup> Z
5K/65	A	0.60	0.651	0.78
5K/69	B	0.675	0.730	0.78
5K/66	C	0.40	0.451	0.78
5K/70	D	0.475	0.730	0.78
5K/67	E	0.565	0.616	0.78
5K/71	F	0.640	0.730	0.78
5K/68	G	0.353	0.404	0.78
5K/72	H	0.428	0.730	0.78

MATERIAL:- BRASS.

FINISH:- ELECTRO-TINNED, THICKNESS NOT LESS THAN .0002

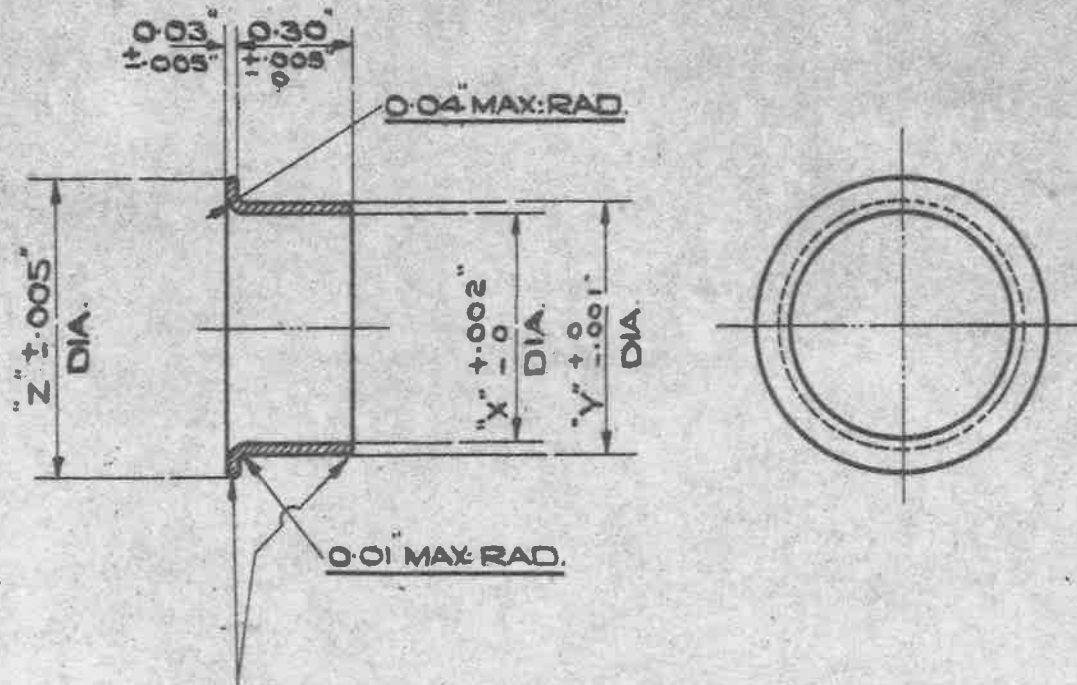
ISSUED BY ROYAL AIRCRAFT ESTABLISHMENT	TITLE:- SLEEVES, BONDING, METAL BRAIDED CABLE, LT. TYPE 3, CIRCULAR, INNER			DRAWN FROM SKETCH No E & I. 8052.	TRACED K. GRANT. 20.9.39.
	ISSUE No 6	ALTER No 853		CHECKED C.T. Reynolds	APPROVED. G.M. 18.3.40

**OBSOLESCE** NO FURTHER MANUFACTURE  
EXISTING STOCKS MAY BE USED.

MINISTRY OF  
SUPPLY.

AGS. N<sup>o</sup> 1660

SHEET N<sup>o</sup> 1 | N<sup>o</sup> OF SHEETS 1



ALL SHARP EDGES TO BE ROUNDED OFF.

STORE & REF. N <sup>o</sup>	MARK.	DIM <sup>n</sup> X	DIM <sup>n</sup> Y	DIM <sup>n</sup> Z
5K/65	A	0.60	0.651	0.78
5K/69	B	0.675	0.730	0.78
5K/66	C	0.40	0.451	0.78
5K/70	D	0.475	0.730	0.78
5K/67	E	0.565	0.616	0.78
5K/71	F	0.640	0.730	0.78
5K/68	G	0.353	0.404	0.78
5K/72	H	0.428	0.730	0.78

MATERIAL :- BRASS.

FINISH :- ELECTRO-TINNED, THICKNESS NOT LESS THAN .0002"

ISSUED BY ROYAL AIRCRAFT ESTABLISHMENT	TITLE: - SLEEVES, BONDING, METAL BRAIDED CABLE, LT. TYPE 3, CIRCULAR, INNER				DRAWN. FROM SKETCH N <sup>o</sup> E & T. 8052	TRACED K. GRANT. 20.9.39.
	ISSUE N <sup>o</sup>	B	SM/ST2		CHECKED C.T. Reynolds	APPROVED. GM 18.7.40
	ALTER N <sup>o</sup>	853	993			