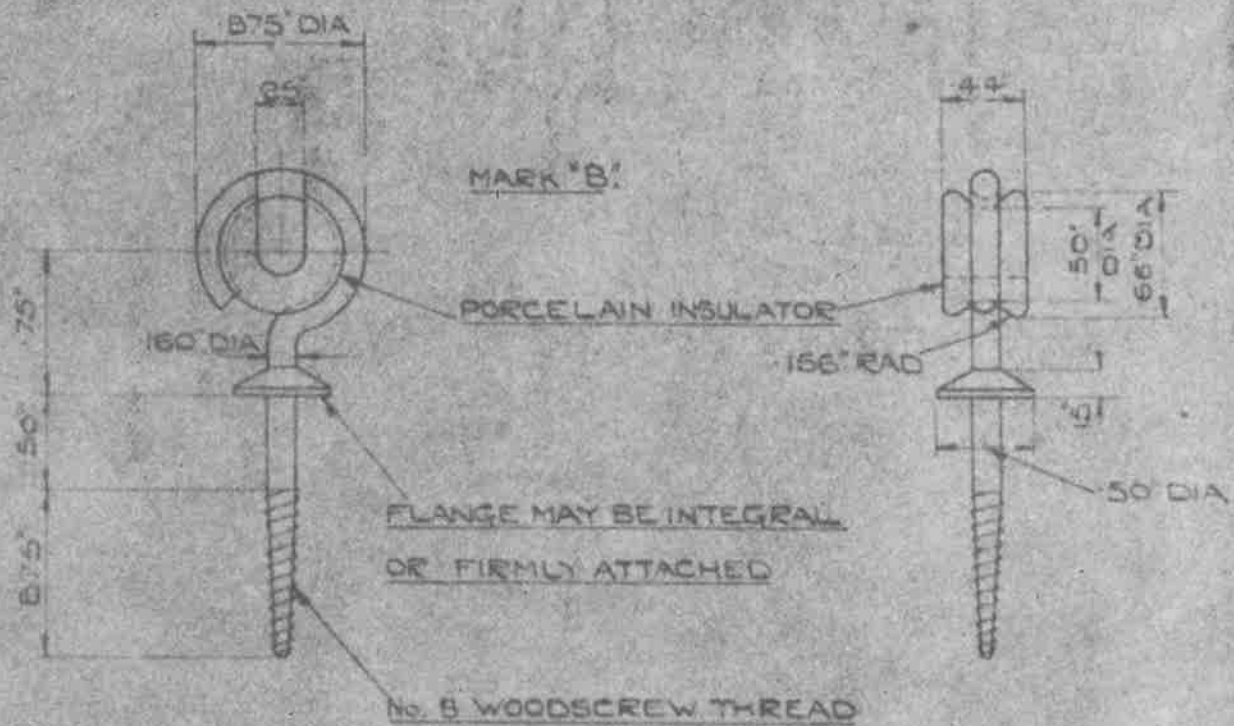
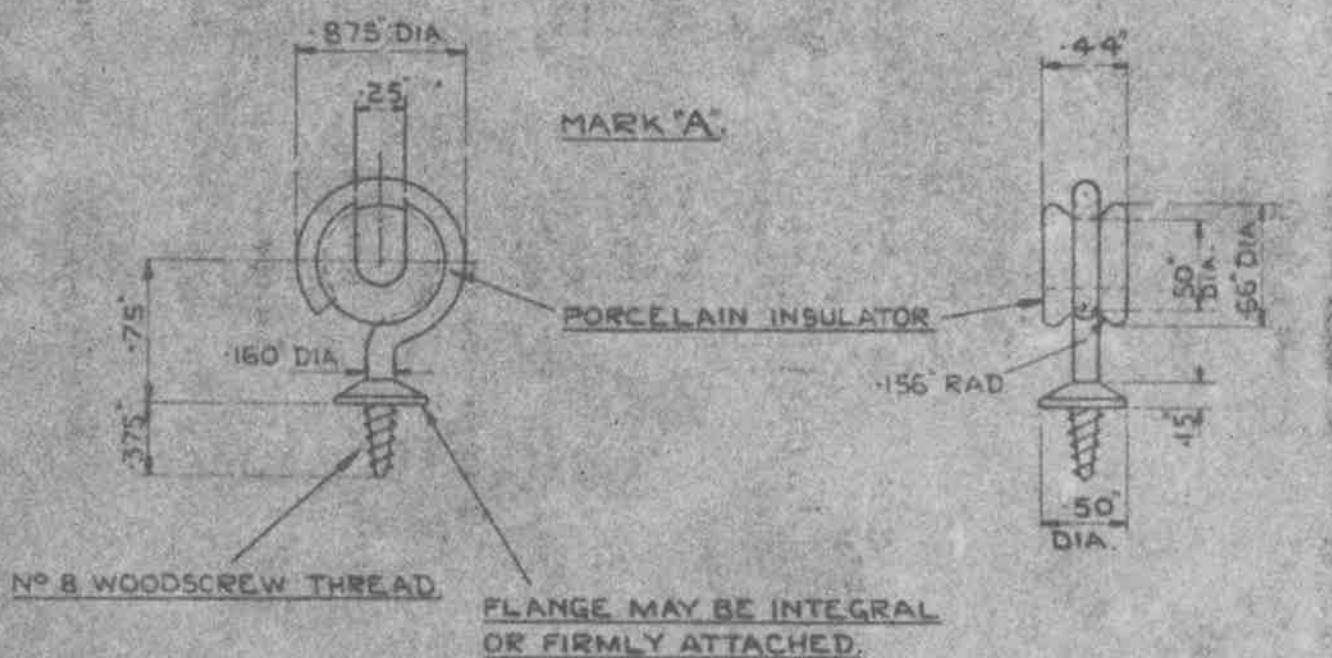


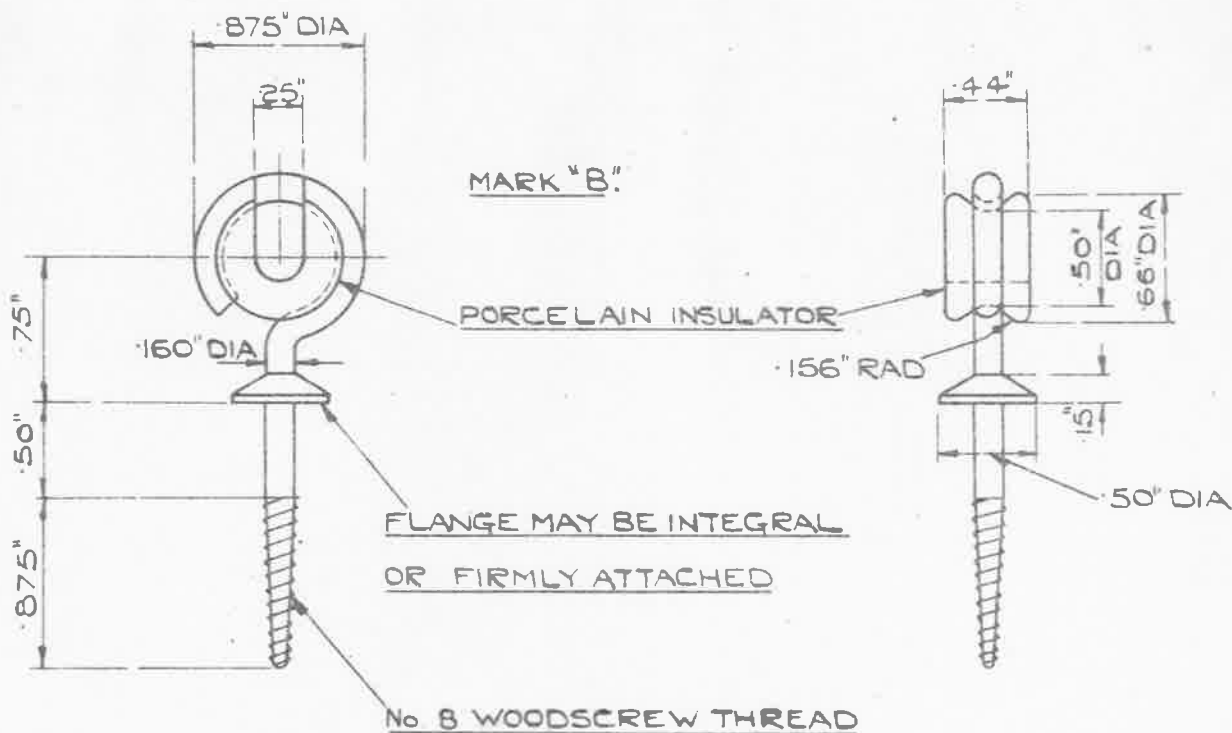
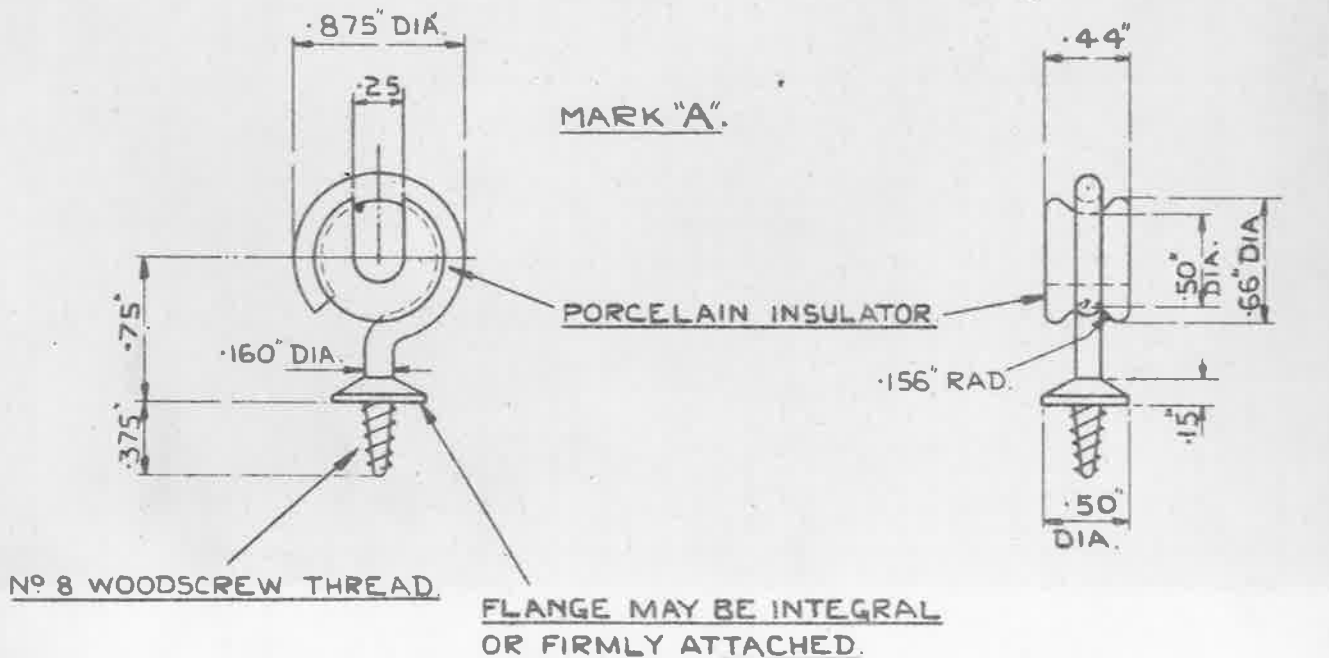
28-7-45  
REF. 193/194



MARK "A" STORES REF. N° SK/302.  
 MARK "B" STORES REF. N° SK/303.  
 MAT: BRASS OR MILD STEEL & PORCELAIN.  
 SCALE: FULL SIZE  
 FINISH: TO BE CADMIUM PLATED TO SPEC. D.T.D. 904, (LATEST ISSUE)

ISSUED BY THE ROYAL AIRCRAFT ESTABLISHMENT.	TITLE - INSULATOR, SCREW, EYE.				DRAWN <i>U. I. Young</i>	TRACED
	ISSUE N°	<input checked="" type="checkbox"/>	2		CHECKED	E.M. 27-9-40
	ALTERN. N°		603			APPROVED

**OBSOLESCE**—NOT TO BE  
USED IN NEW DESIGN WORK.



MARK "A." STORES REF. N<sup>o</sup> 5K/302.

MARK "B." STORES REF. N<sup>o</sup> 5K/303.

MAT: BRASS OR MILD STEEL & PORCELAIN.

SCALE: FULL SIZE.

FINISH: - TO BE CADMIUM PLATED TO SPEC: DTD. 904 (LATEST ISSUE).

ISSUED BY THE ROYAL AIRCRAFT ESTABLISHMENT.	TITLE:— INSULATOR, SCREW EYE.				DRAWN <i>G. I. Young</i>	TRACED
	ISSUE N <sup>o</sup>	1	2	3	CHECKED	E.M 27.9.40 APPROVED. <i>M. J. 10.10</i>
	ALTER N <sup>o</sup>	100/430	663	979		
				SMT80		