

DEVELOPED LENGTH - 2-20" APPROX

MATL - BRASS TO B 5 SPEC: 265 (LATEST ISSUE)

FINISH - ELECTRO-TINNED THICKNESS NOT LESS THAN .0003"
 ALTERNATIVELY, NICKEL PLATING THICKNESS NOT LESS THAN .0003"

STORES REF N° SK/234

SCALE 2/1

ISSUED BY THE
 ROYAL
 AIRCRAFT
 ESTABLISHMENT.

TITLE - CLEAT, WIRING BRASS N° 10

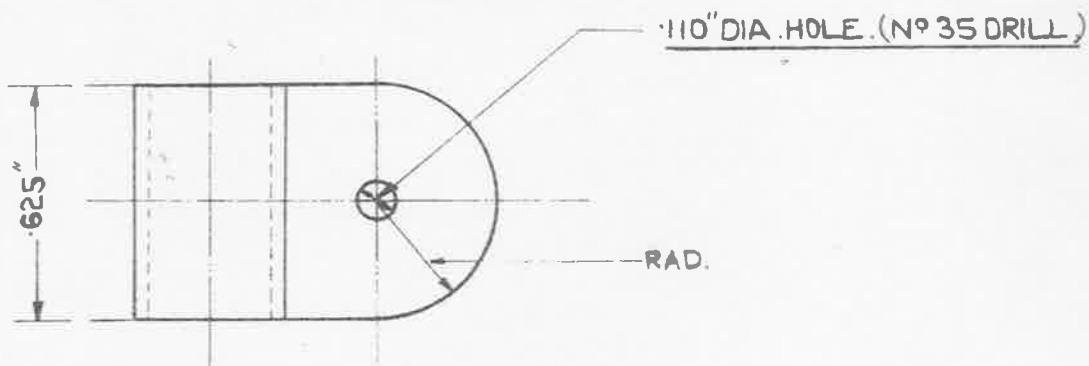
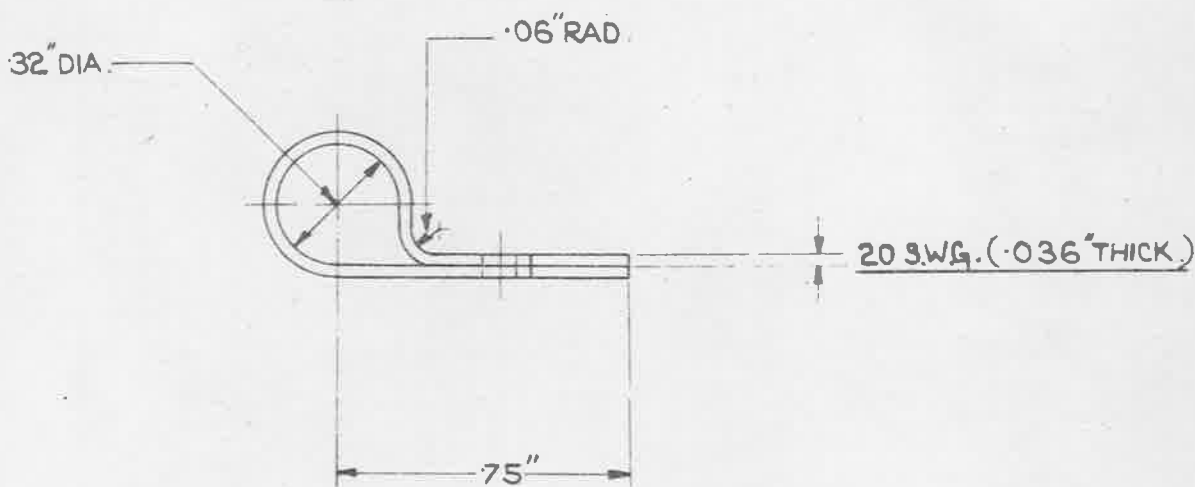
ISSUE N°	1-2-21	DESIGNED	PLACED
ALTER N°	1-2-21	CHECKED	APPROVED

A 28 9 40

OBSOLESCE - NOT TO BE USED
IN NEW DESIGN WORK. SEE S.D.M. 265.

MINISTRY OF
AIRCRAFT PRODUCTION. AGS. No 1667.

SHEET No 1. No OF SHEETS 1.



DEVELOPED LENGTH = 2.20" APPROX.

MATL:- BRASS TO B.S. SPEC: 265. (LATEST ISSUE.)
FINISH:- ELECTRO-TINNED, THICKNESS NOT LESS THAN .0002".
ALTERNATIVELY, NICKEL PLATING, THICKNESS NOT
LESS THAN .0003".

STORES REF. No 5K/234.

SCALE 2/1.

ISSUED BY THE
ROYAL
AIRCRAFT
ESTABLISHMENT.

TITLE:- CLEAT, WIRING, BRASS, No 10.

DRAWN

TRACED

J. J. Young

I.A. 28.9.40

ISSUE No

1st 2nd 3

CHECKED

APPROVED.

ALTERS No

100 No 100 No 100 No

J. J. Young

20 10.40

SM 781

AGS. No 1667