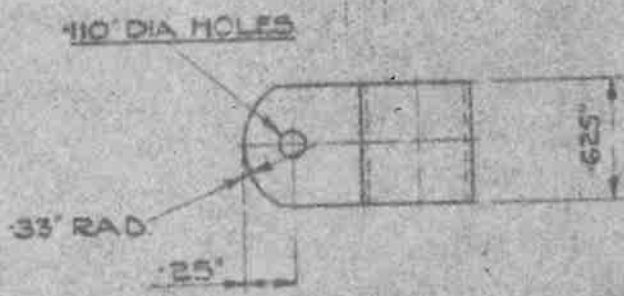


27643



DEVELOPED LENGTH 2.70 (APPROX)

MATERIAL : ALUMINIUM TO BS SPEC. L 17 (LATEST ISSUE)

FINISH :- NATURAL

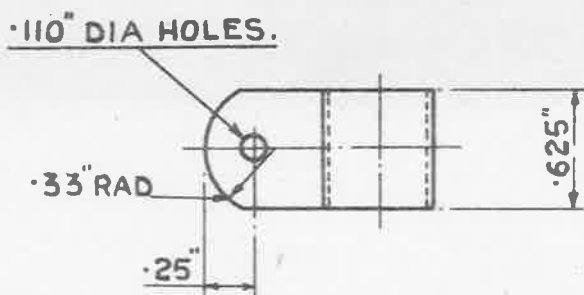
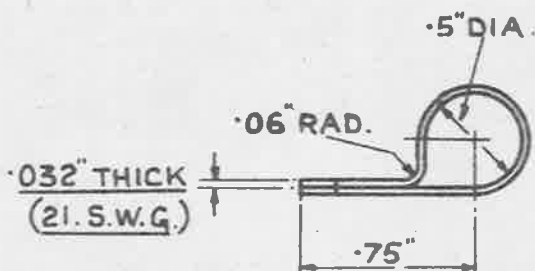
STORES REF NO 5K/21B

SCALE :- 1/1

ISSUED BY THE ROYAL AIRCRAFT ESTABLISHMENT	TITLE:-- CLEAT, WIRING, ALUMINIUM, NO 9 -				DRAWN (Signature)	TRAC CLW 2-11-50
	ISSUE NO	XI	2		CHECKED (Signature)	APPROVED (Signature)
	ALTER NO	104	333			

23.6.43
RES: A.G.S. 183

OBSOLESCE - NOT TO BE USED
IN NEW DESIGN WORK. SEE S.D.M. 265



DEVELOPED LENGTH 2.70" (APPROX)

MATERIAL:- ALUMINIUM TO B.S. SPEC: L.17. (LATEST ISSUE).

FINISH:- NATURAL.

STORES REF. No 5K/218.

ISSUED BY THE ROYAL AIRCRAFT ESTABLISHMENT	TITLE:- CLEAT, WIRING, ALUMINIUM, No 9.				DRAWN J.T. YOUNG	RETRACED OK 12-12-47
	ISSUE No	+	2	3	CHECKED P.H.C.	APPROVED
	ALTERN No	MOB No A.G.S. 485	AS. A.G.S. 663	MOB/ALB 975	Re-Tracing C.T. Reynolds	F.L. GOODGER 12.11.40.

3-7-43

SM781