

MARK	REF. N°	SIZE	A	B	C	D	E	F	G	H
A	5K/1605	0-BA	.73"	.66"	.032" (21.5WG)	.26"	.13"	.35"	.16"	.08"
B	5K/1604	2-BA	.65"	.50"	.032" (21.5WG)	.20"	.10"	.35"	.10"	.05"
C	5K/1603	4-BA	.46"	.31"	.028" (22.5WG)	.16"	.08"	.25"	.08"	.04"
D	5K/1602	6-BA	.375"	.26"	.024" (23.5WG)	.125"	.062"	.20"	.062"	.031"

MATERIAL: COPPER (COMMERCIAL QUALITY).

FINISH: TO BE ELECTRO-TINNED, THICKNESS NOT LESS THAN .0003"

NOTE: PLATING TO BE CARRIED OUT EITHER BY THE ALKALINE SODIUM STANNATE BATH (WITHOUT ADDITION OF GLUE OR OTHER ORGANIC COMPOUND), OR BY THE ACID STANNOUS SULPHATE PROCESS.

ISSUED BY THE
ROYAL
AIRCRAFT
ESTABLISHMENT

TITLE: CABLE ENDS, FORK TYPE,
CHANNEL END, SOLDERING

RE-TRACED AT
DAP GAF

ISSUE N°	1	2	3		
ALTERATION N°	MOD. N° 445,500	AMEND. 06	A.S.N° 445,503		

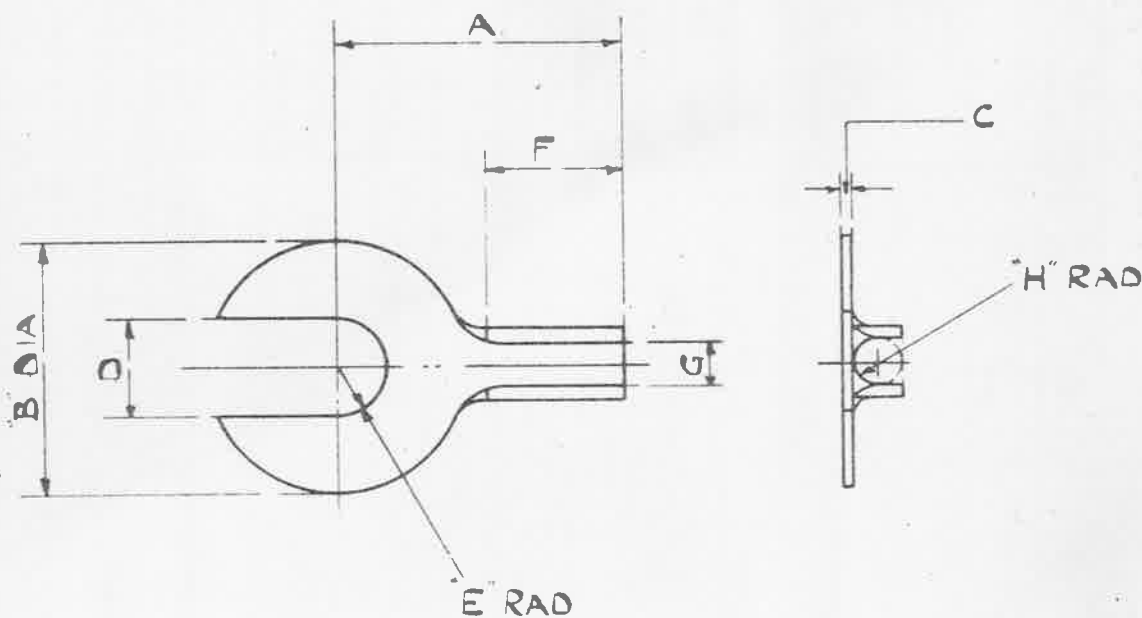
R SPENCER
26-1-50

OBSOLESCE - NOT TO BE USED
IN NEW DESIGN WORK. SEE S.D.M. 256.

MINISTRY OF
SUPPLY

AGS. No 1678

SHEET No 1 | No OF SHEETS 1



MARK	REF. No	SIZE	A	B	C	D	E	F	G	H
A	5K/1605	0-B.A	.73"	.66"	.032" (21.5WG)	.26"	.13"	.35"	.16"	.08"
B	5K/1604	2-B.A	.65"	.50"	.032" (21.5WG)	.20"	.10"	.35"	.10"	.05"
C	5K/1603	4-B.A	.46"	.31"	.028" (22.5WG)	.16"	.08"	.25"	.08"	.04"
D	5K/1602	6-B.A	.375"	.26"	.024" (23.5WG)	.125"	.062"	.20"	.062"	.031"

MATERIAL :- COPPER (COMMERCIAL QUALITY.)

FINISH :- TO BE ELECTRO-TINNED, THICKNESS NOT LESS THAN .0003".
NOTE :- PLATING TO BE CARRIED OUT EITHER BY THE ALKALINE SODIUM STANNATE BATH (WITHOUT ADDITION OF GLUE OR OTHER ORGANIC COMPOUNDS), OR BY THE ACID STANNOUS SULPHATE PROCESS.

ISSUED BY THE
ROYAL
AIRCRAFT
ESTABLISHMENT.

TITLE:- CABLE ENDS, FORK TYPE,
CHANNEL END, SOLDERING.

ISSUE No	1	2	3	4
ALTER No	100/500	AMENO	AS/AGS	MODALS
		AGS306	663	973
				SMT19

DRAWN
J.E.
CHECKED
APPROVED.
M.P.J.
30-9-40
29/10/40